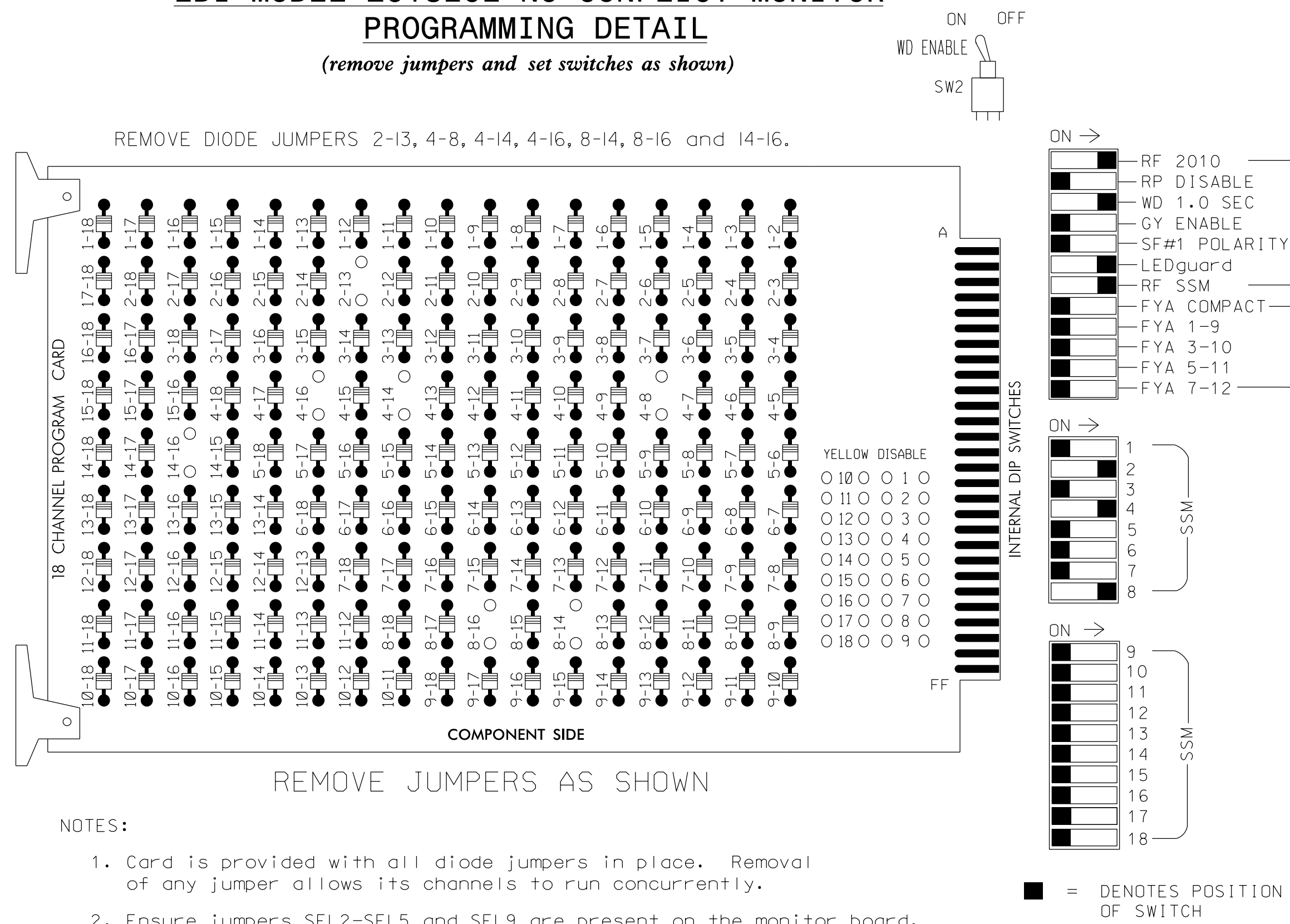


EDI MODEL 2018ECL-NC CONFLICT MONITOR PROGRAMMING DETAIL

(remove jumpers and set switches as shown)



NOTES

- To prevent "flash-conflict" problems, insert red flash program blocks for all unused vehicle load switches in the output file. The installer shall verify that signal heads flash in accordance with the Signal Plans.
- Enable Simultaneous Gap-Out for all phases.
- Program phases 2, 4 and 8 for 'STARTUP PED CALL'.
- Program phase 2 for Start Up In Green.
- Program phase 2 for Yellow Flash.
- The cabinet and controller are part of the High Point Signal System.

EQUIPMENT INFORMATION

CONTROLLER.....2070E
 CABINET.....332
 SOFTWARE.....ECONOLITE OASIS
 CABINET MOUNT.....BASE
 OUTPUT FILE POSITIONS...12
 LOAD SWITCHES USED.....S2,S3,S5,S6,S11,S12
 PHASES USED.....2,2 PED,4,4 PED,8,8 PED
 OVERLAPS.....NONE

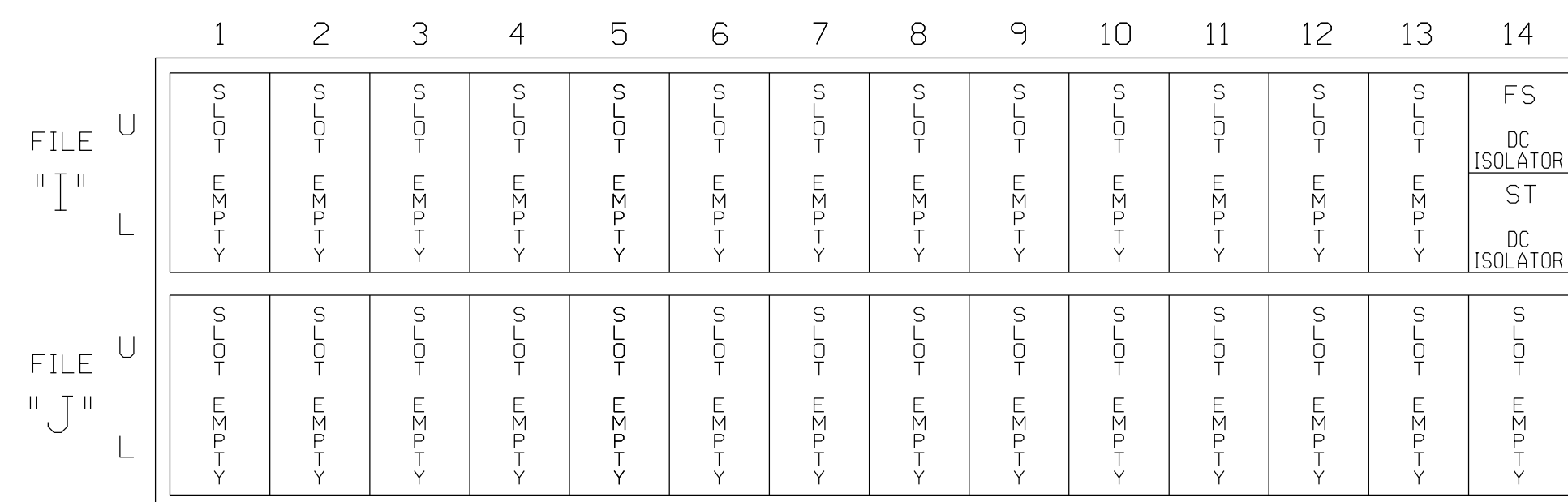
PROJECT REFERENCE NO.	SHEET NO.
C-5558	Fig. 195.1

LOAD SWITCH NO.	S1	S2	S3	S4	S5	S6	S7	S8	S9	S10	S11	S12
CMU CHANNEL NO.	1	2	13	3	4	14	5	6	15	7	8	16
PHASE	1	2	2 PED	3	4	4 PED	5	6	6 PED	7	8	8 PED
SIGNAL HEAD NO.	NU	21,22	P21,P22, P23,P24, P25,P26	NU	41,42	P41, P42	NU	NU	NU	NU	81,82	NU
RED		128			101						107	
YELLOW		129			102						108	
GREEN		130			103						109	
RED ARROW												
YELLOW ARROW												
GREEN ARROW												
Hand icon			113			104						
Walking person icon			115			106						

NU = Not Used

INPUT FILE POSITION LAYOUT

(front view)



EX.: 1A, 2A, ETC. = LOOP NO.'S

FS = FLASH SENSE
 ST = STOP TIME
 PRE = PREEMPT

COUNTDOWN PEDESTRIAN SIGNAL OPERATION

Countdown Ped Signals are required to display timing only during Ped Clearance Interval. Consult Ped Signal Module user's manual for instructions on selecting this feature.

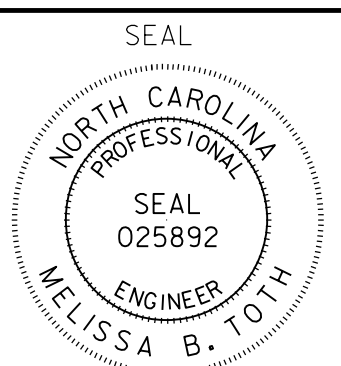
THIS ELECTRICAL DETAIL IS FOR THE SIGNAL DESIGN: HP0502
 DESIGNED: July 2014
 SEALED: June 5, 2015
 REVISED:

Signal Upgrade



Hamilton Street
at
Commerce Avenue

Division 07	Guilford County	High Point
PLAN DATE: July 2014	REVIEWED BY: LM Moon	
PREPARED BY: AM Encarnacion	REVIEWED BY: MB Toth	
REVISIONS	INIT.	DATE



DocuSigned by:
Melissa B. Toth
6/5/2015
DATE
SIG. INVENTORY NO. HP0502

ATKINS 1616 EAST MILLBROOK ROAD, SUITE 310
 RALEIGH, NORTH CAROLINA 27609
 (919) 876-6888 NCBEES #F-0326