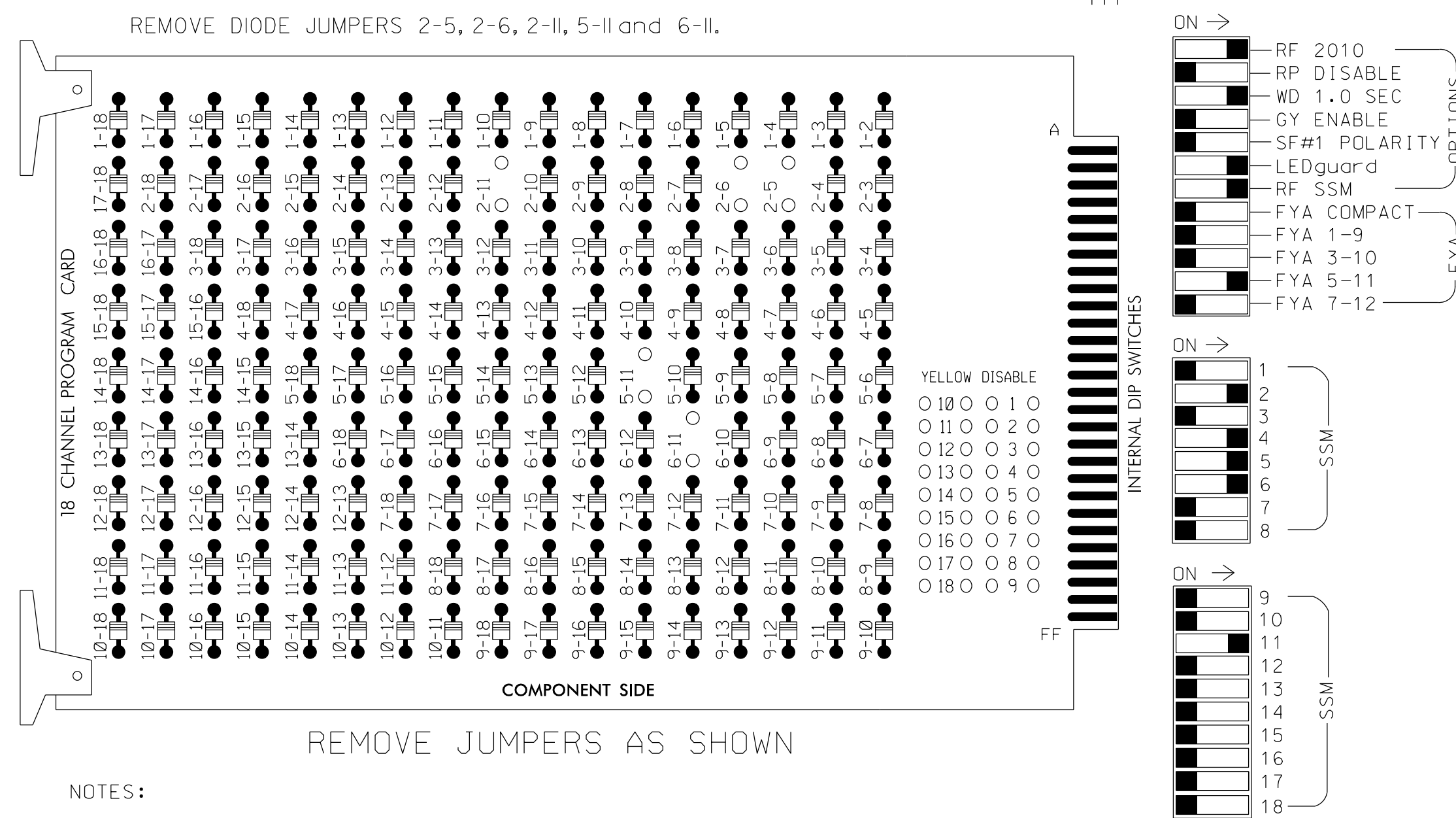


### EDI MODEL 2018ECL-NC CONFLICT MONITOR PROGRAMMING DETAIL

(remove jumpers and set switches as shown)



**NOTES:**

1. Card is provided with all diode jumpers in place. Removal of any jumper allows its channels to run concurrently.
2. Ensure jumpers SEL2-SEL5 and SEL9 are present on the monitor board.
3. Ensure that Red Enable is active at all times during normal operation.
4. Connect serial cable from conflict monitor to comm. port 1 of 2070 controller. Ensure conflict monitor communicates with 2070.

### NOTES

1. To prevent "flash-conflict" problems, insert red flash program blocks for all unused vehicle load switches in the output file. The installer shall verify that signal heads flash in accordance with the Signal Plans.
2. Enable Simultaneous Gap-Out for all phases.
3. Program phases 2 and 6 for Start Up In Green.
4. Program phases 2 and 6 for Yellow Flash.
5. The cabinet and controller are part of the High Point Signal System.

### EQUIPMENT INFORMATION

CONTROLLER.....2070E  
 CABINET.....332 /W/ AUX  
 SOFTWARE.....ECONOLITE OASIS  
 CABINET MOUNT.....BASE  
 OUTPUT FILE POSITIONS...18 WITH AUX. OUTPUT FILE  
 LOAD SWITCHES USED.....S2,S5,S7,S8,AUX S4.  
 PHASES USED.....2,4,5,6.  
 OVERLAP "A".....NOT USED  
 OVERLAP "B".....NOT USED  
 OVERLAP "C".....5+6  
 OVERLAP "D".....NOT USED

PROJECT REFERENCE NO.	SHEET NO.
C-5558	Fig. 189.1

### SIGNAL HEAD HOOK-UP CHART

LOAD SWITCH NO.	S1	S2	S3	S4	S5	S6	S7	S8	S9	S10	S11	S12	AUX S1	AUX S2	AUX S3	AUX S4	AUX S5	AUX S6	
CMU CHANNEL NO.	1	2	13	3	4	14	5	6	15	7	8	16	9	10	17	11	12	18	
PHASE	1	2	2 PED	3	4	4 PED	5	6	6 PED	7	8	8 PED	OLA	OLB	SPARE	OLC	OLD	SPARE	
SIGNAL HEAD NO.	NU	21,22	NU	NU	41,42	NU	51	61,62	NU	NU	NU	NU	NU	NU	NU	51	NU	NU	
RED		128				101				134									
YELLOW		129				102		*		135									
GREEN		130				103				136									
RED ARROW																		A114	
YELLOW ARROW																			A115
FLASHING YELLOW ARROW																			A116
GREEN ARROW										133									

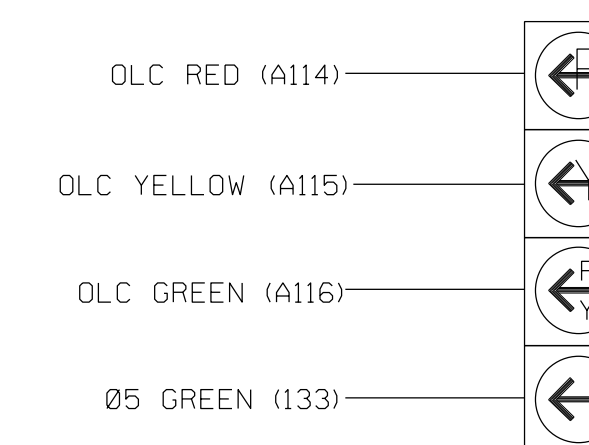
NU = Not Used

\* Denotes install load resistor. See load resistor installation detail this sheet.

★ See pictorial of head wiring in detail below.

### 4 SECTION FYA PPLT SIGNAL WIRING DETAIL

(wire signal heads as shown)



51

**NOTE**

1. The sequence display for this signal requires special logic programming. See sheet 2 of 2 for programming instructions.

### INPUT FILE POSITION LAYOUT

(front view)

FILE	1	2	3	4	5	6	7	8	9	10	11	12	13	14
U	∅ 2	2A	∅ 3	∅ 4	∅ 5	∅ 6	∅ 7	∅ 8	SYS. DET. S1	∅ 9	∅ 10	∅ 11	∅ 12	FS
L	NOT USED	NOT USED	∅ 3	∅ 4	∅ 5	∅ 6	∅ 7	∅ 8	NOT USED	∅ 9	∅ 10	∅ 11	∅ 12	DC ISOLATOR
U	∅ 5	∅ 6	∅ 7	∅ 8	∅ 9	∅ 10	∅ 11	∅ 12	∅ 13	∅ 14	∅ 15	∅ 16	∅ 17	DC ISOLATOR
L	NOT USED	NOT USED	∅ 7	∅ 8	∅ 9	∅ 10	∅ 11	∅ 12	∅ 13	∅ 14	∅ 15	∅ 16	∅ 17	DC ISOLATOR

EX.: 1A, 2A, ETC. = LOOP NO.'S

FS = FLASH SENSE  
 ST = STOP TIME

⊗ Wired Input - Do not populate slot with detector card

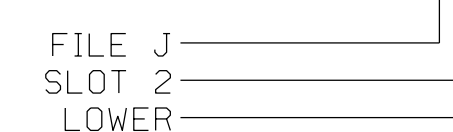
### INPUT FILE CONNECTION & PROGRAMMING CHART

LOOP NO.	LOOP TERMINAL	INPUT FILE POS.	PIN NO.	INPUT ASSIGNMENT NO.	DETECTOR NO.	NEMA PHASE	CALL	EXTEND	FULL TIME DELAY	STRETCH TIME	DELAY TIME
2A	TB2-5,6	I2U	39	1	2	2	Y	Y			
4A	TB4-9,10	I6U	41	3	4	4	Y	Y			3
4B	TB4-11,12	I6L	45	7	14	4	Y	Y			15
* S1	TB6-9,10	I9U	60	22	11	SYS					
5A <sup>1</sup>	TB3-1,2	J1U	55	17	5	5	Y	Y			15
	-	I4U	47	9	22	2	Y	Y			
6A	TB3-5,6	J2U	40	2	6	6	Y	Y			

<sup>1</sup>Add jumpers from J2=F to I4=W, on rear of input file.

\* System detector only. Remove the vehicle phase assigned to this detector in the default programming.

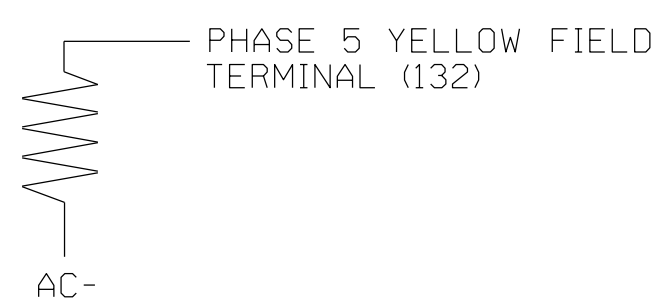
#### INPUT FILE POSITION LEGEND: J2L



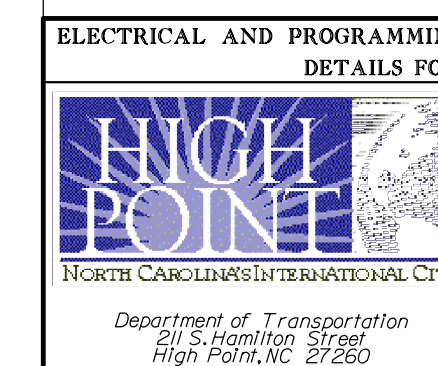
### LOAD RESISTOR INSTALLATION DETAIL

(install resistors as shown below)

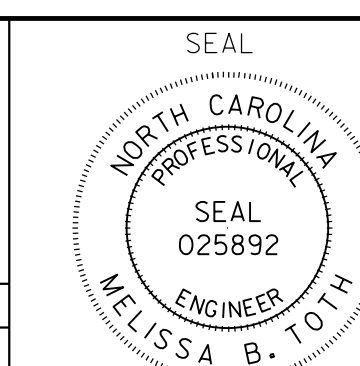
ACCEPTABLE VALUES	
VALUE (ohms)	WATTAGE
1.5K - 1.9K	25W (min)
2.0K - 3.0K	10W (min)



### ELECTRICAL DETAIL SHEET 1 OF 2



Division 07		Guilford County		High Point	
PLAN DATE:	July 2014	REVIEWED BY:	LM Moon		
PREPARED BY:	AM Encarnacion	REVIEWED BY:	MB Toth		
REVISIONS		INIT.		DATE	



DocuSigned by:  
 Melissa B. Toth  
 6/5/2015

SIG. INVENTORY NO. HP0309

**ATKINS** 1616 EAST MILLBROOK ROAD, SUITE 310  
 RALEIGH, NORTH CAROLINA 27609  
 (919) 876-6888 NCBEEES #F-0326