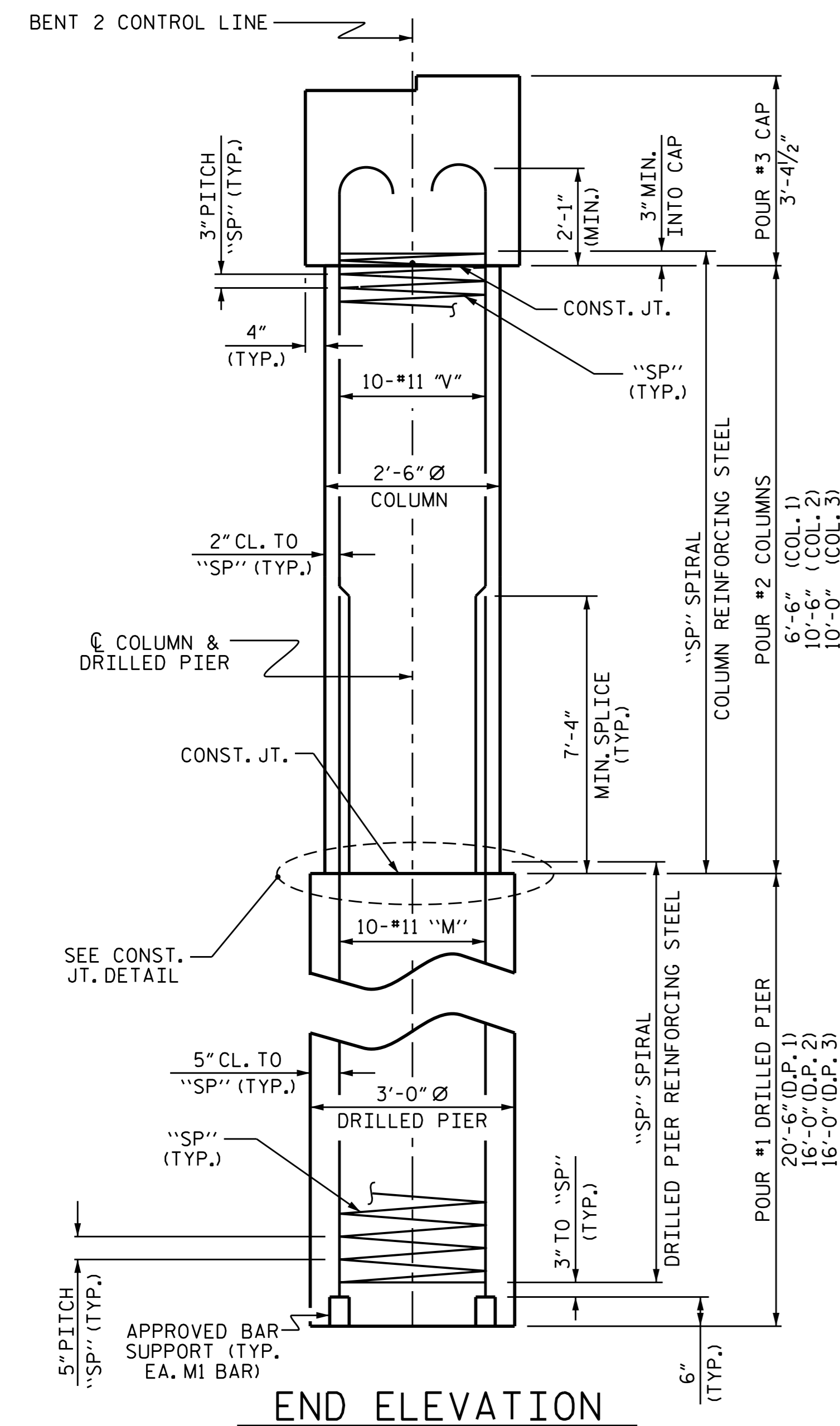
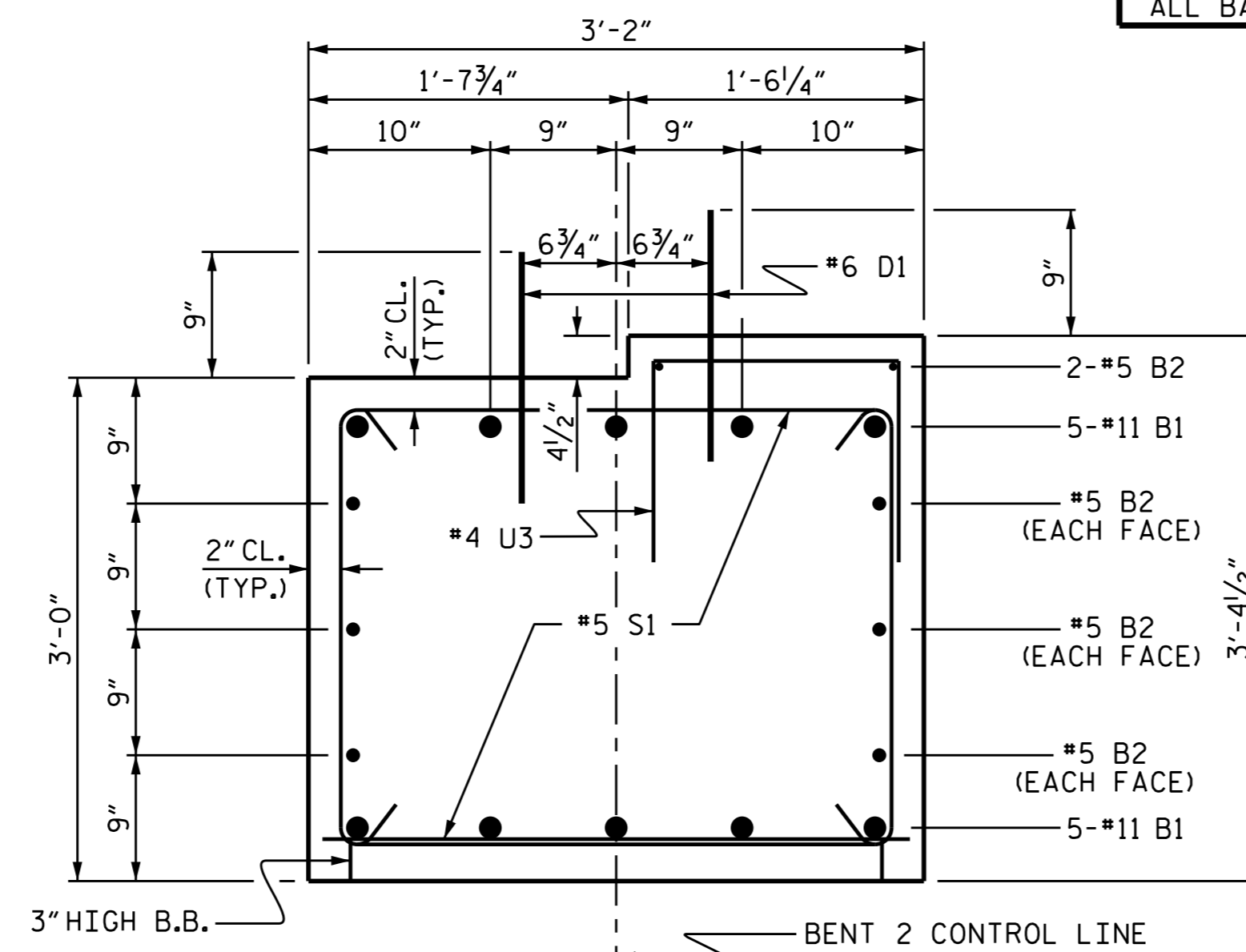


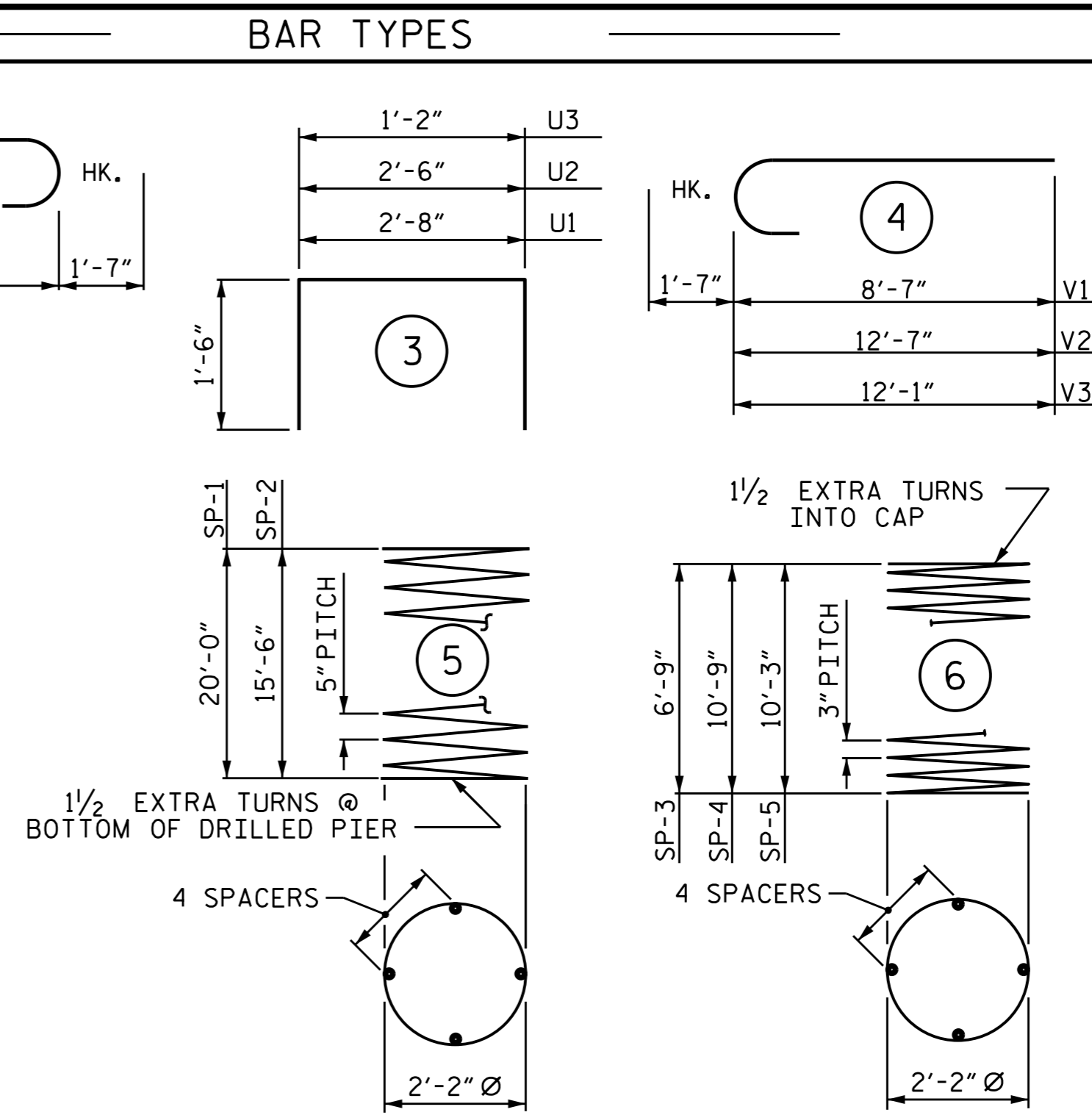
PLAN OF DRILLED PIERS & COLUMNS



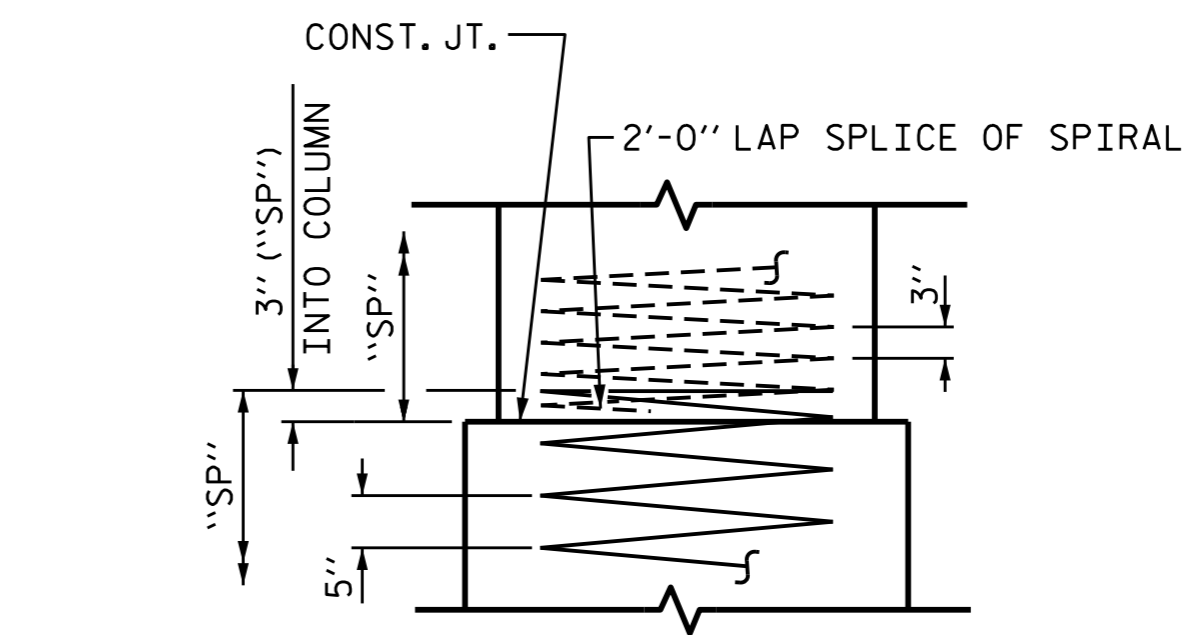
END ELEVATION



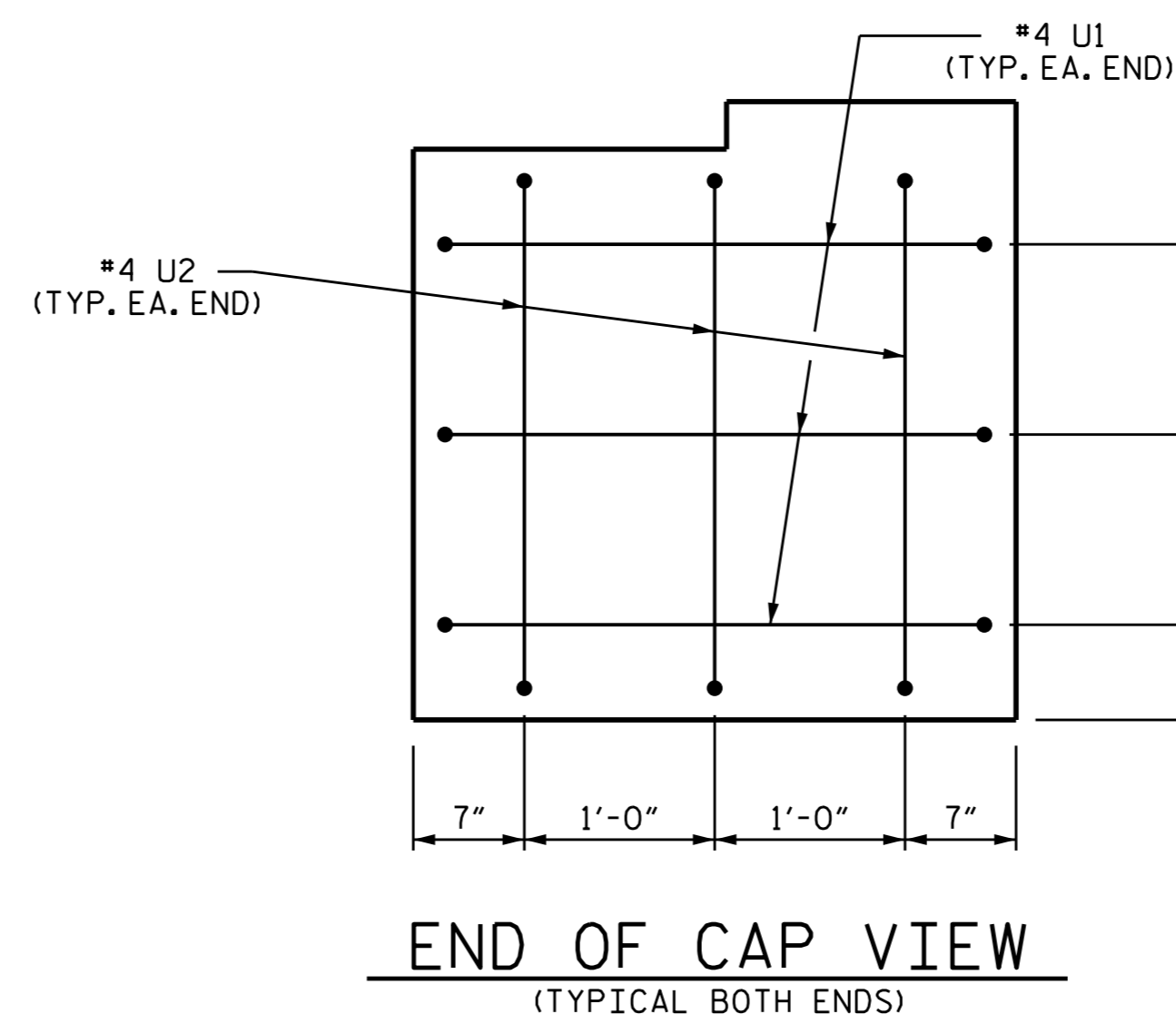
SECTION THRU CAP



ALL BAR DIMENSIONS ARE OUT TO OUT



CONSTRUCTION JOINT DETAIL



END OF CAP VIEW
(TYPICAL BOTH ENDS)

BILL OF MATERIAL					
BENT 2					
BAR	NO.	SIZE	TYPE	LENGTH	WEIGHT
B1	10	#11	1	43'-6"	2311
B2	8	#5	STR	40'-6"	338
D1	48	#6	STR	1'-6"	108
M1	10	#11	STR	30'-7"	1625
M2	20	#11	STR	26'-1"	2772
S1	72	#5	2	9'-0"	676
U1	6	#4	3	5'-8"	23
U2	6	#4	3	5'-6"	22
U3	27	#4	3	4'-2"	75
V1	10	#11	4	10'-2"	540
V2	10	#11	4	14'-2"	753
V3	10	#11	4	13'-8"	726
REINFORCING STEEL					9969 LBS.
SP-1	1	*	5	332'-0"	346
SP-2	2	*	5	259'-0"	540
SP-3	1	**	6	195'-3"	130
SP-4	1	**	6	301'-11"	202
SP-5	1	**	6	288'-7"	193
SPIRAL COLUMN REINFORCING STEEL					1411 LBS.

* THE SP-1&2 SPIRAL REINFORCING STEEL SHALL BE W31 OR D-31 COLD DRAWN WIRE OR #5 PLAIN OR DEFORMED BAR
 ** THE SP-3,4&5 SPIRAL REINFORCING STEEL SHALL BE W20 OR D-20 COLD DRAWN WIRE OR #4 PLAIN OR DEFORMED BAR

CLASS A CONCRETE BREAKDOWN	
POUR #2 (COLUMNS)	4.9 C.Y.
POUR #3 (CAP)	15.2 C.Y.
TOTAL CLASS A CONCRETE	20.1 C.Y.

DRILLED PIERS:	
DRILLED PIER CONCRETE	
POUR #1 (DRILLED PIERS)	13.7 C.Y.
3'-0" Ø DRILLED PIER NOT IN SOIL	30 LIN. FT.
3'-0" Ø DRILLED PIER IN SOIL	22.5 LIN. FT.
PERMANENT STEEL CASING FOR 3'-0" Ø DRILLED PIER	29.2 LIN. FT.
CSL TUBES	228 LIN. FT.

PROJECT NO. B-4959
 GUILFORD COUNTY
 STATION: 14+70.50 -L-

SHEET 2 OF 2

STATE OF NORTH CAROLINA
 DEPARTMENT OF TRANSPORTATION
 RALEIGH
 SUBSTRUCTURE
 BENT 2

REVISIONS					
NO.	BY:	DATE:	NO.	BY:	DATE:
1			3		
2			4		

SHEET NO.	
S-23	TOTAL SHEETS
25	



DocuSigned by: *Emmanuel L. Omble*
 9/3/2015

ASSEMBLED BY: C. YOKELEY DATE: 2/10/14
 CHECKED BY: T. KIRSCHBAUM DATE: 3/3/14

02-SEP-2015 16:09
 K:\TIP\Projects-B\B4959\Structures\Plans\Final Plan\B4959.sd.cs.oregon.dgn
 f.fang

STD. NO. DP_BT_36_75S-<50'