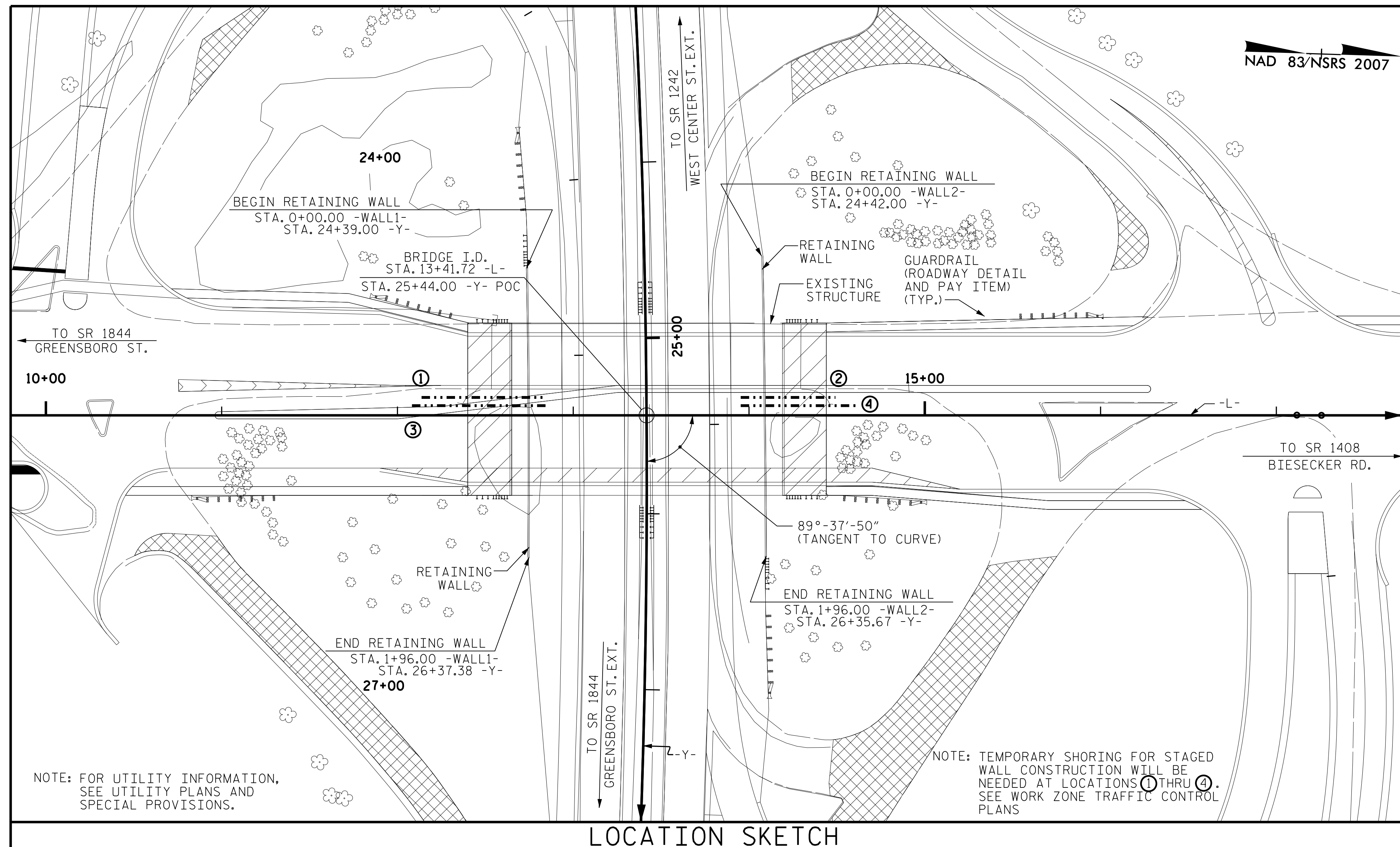
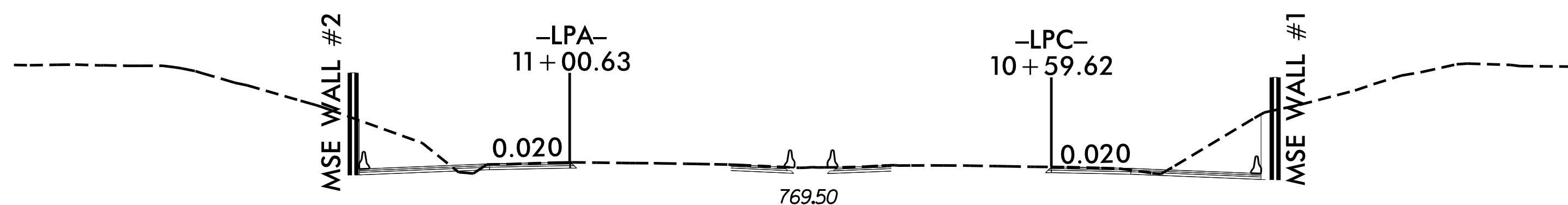


BM. #1 RAILROAD SPIKE IN ROOT OF FORKED WILLOW OAK 87' LEFT OF STA. 15+29.00 -Y-
(BETWEEN 7TH. ST. AND US 29/70 S. BOUND) EL. 753.48



LOCATION SKETCH



TYPICAL SECTION
LOOKING UPSTATION ALONG -Y- LINE

GEOTECHNICAL ENGINEER

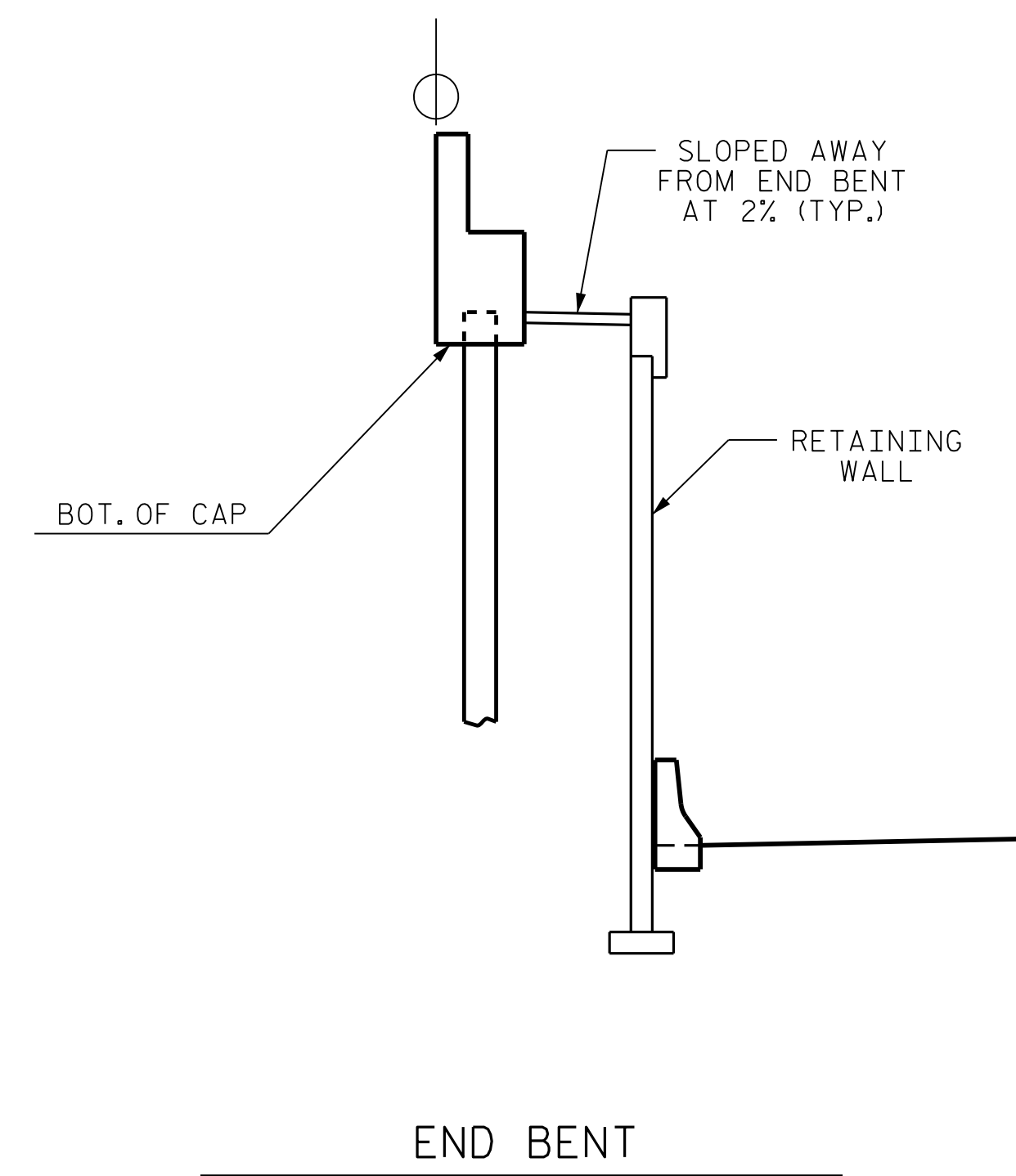
ENGINEER

DocuSigned by:
Shane C. Clark
1FAE87E8D8A8EA

SEAL
29869
ENGINEER
SHANE C. CLARK

7/9/2015

SIGNATURE DATE SIGNATURE DATE



ESTIMATED MSE WALL QUANTITIES (SQUARE FEET)	
MSE RETAINING WALL NO. 1	3180 SF
MSE RETAINING WALL NO. 2	3130 SF

PROJECT NO.: B-3159
DAVIDSON COUNTY
STATION: 13+41.72 -L- 25+44.00 -Y-
SHEET 2 OF 5

NORTH CAROLINA DEPARTMENT OF TRANSPORTATION DIVISION OF HIGHWAYS

GEOTECHNICAL ENGINEERING UNIT

REVISIONS						SHEET NO.
NO.	BY	DATE	NO.	BY	DATE	
1			3			W-2
2			4			

PREPARED BY: EJS DATE: 7/15
REVIEWED BY: EJS DATE: 7/15