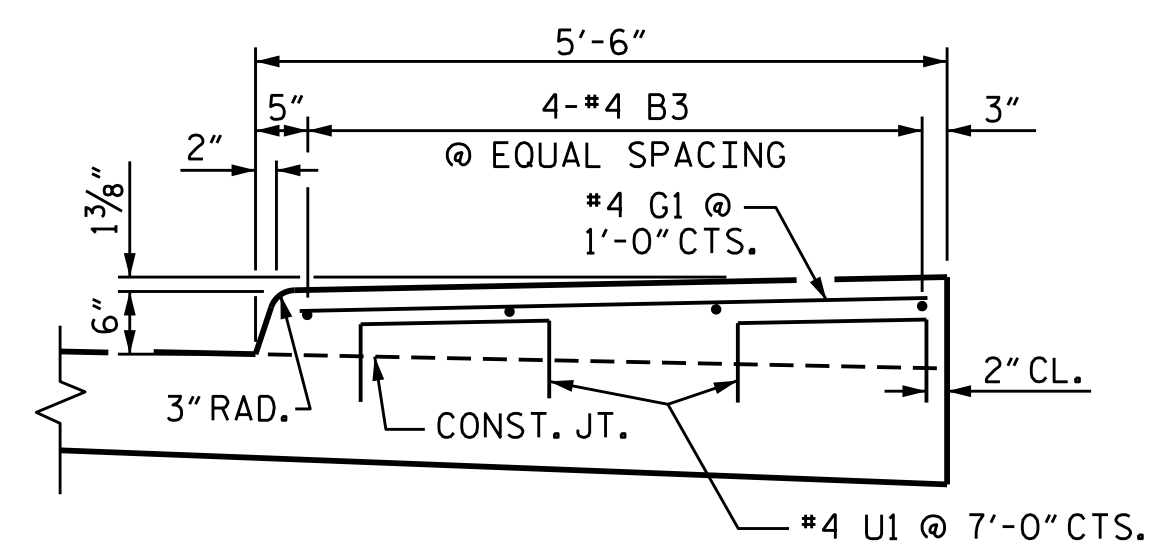
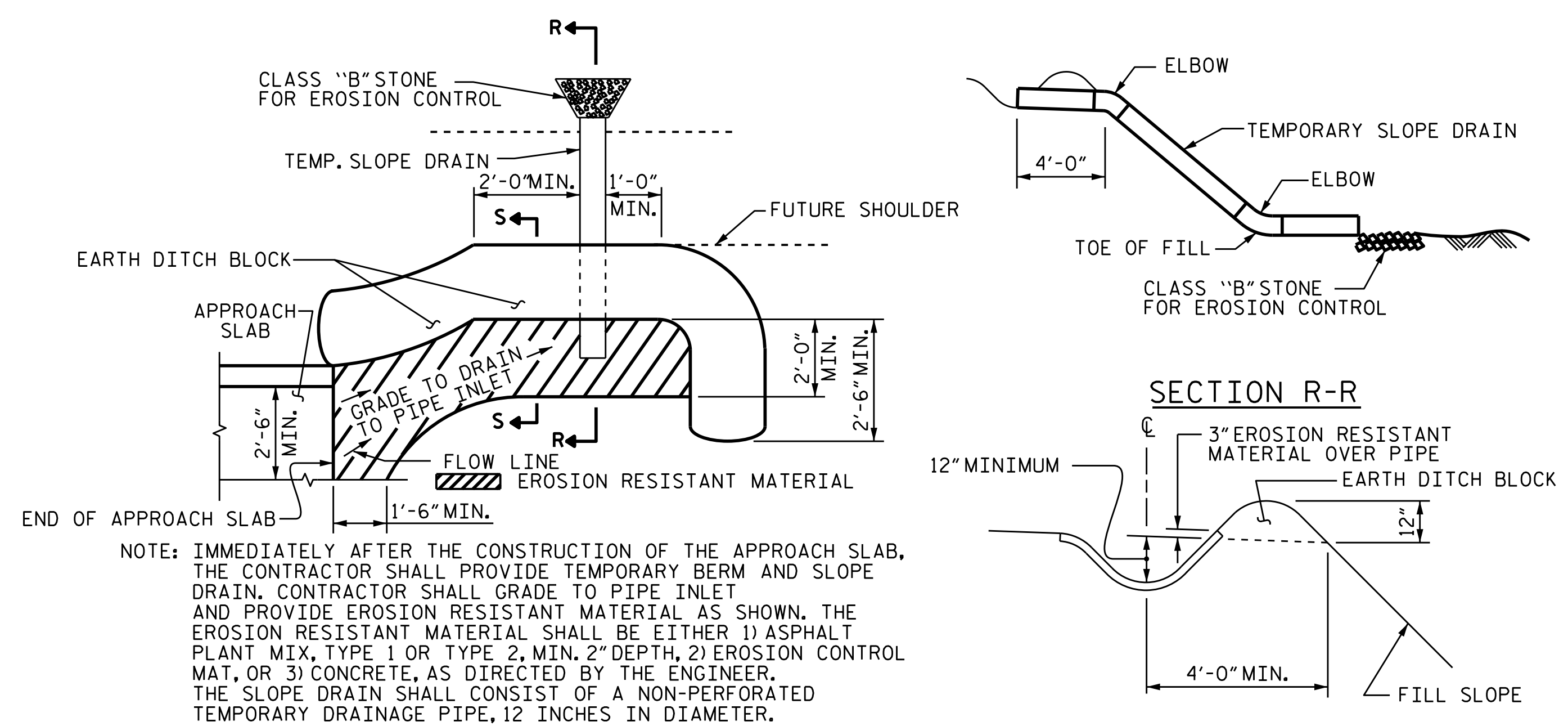


**DETAILS OF SIDEWALK ON APPROACH SLAB**



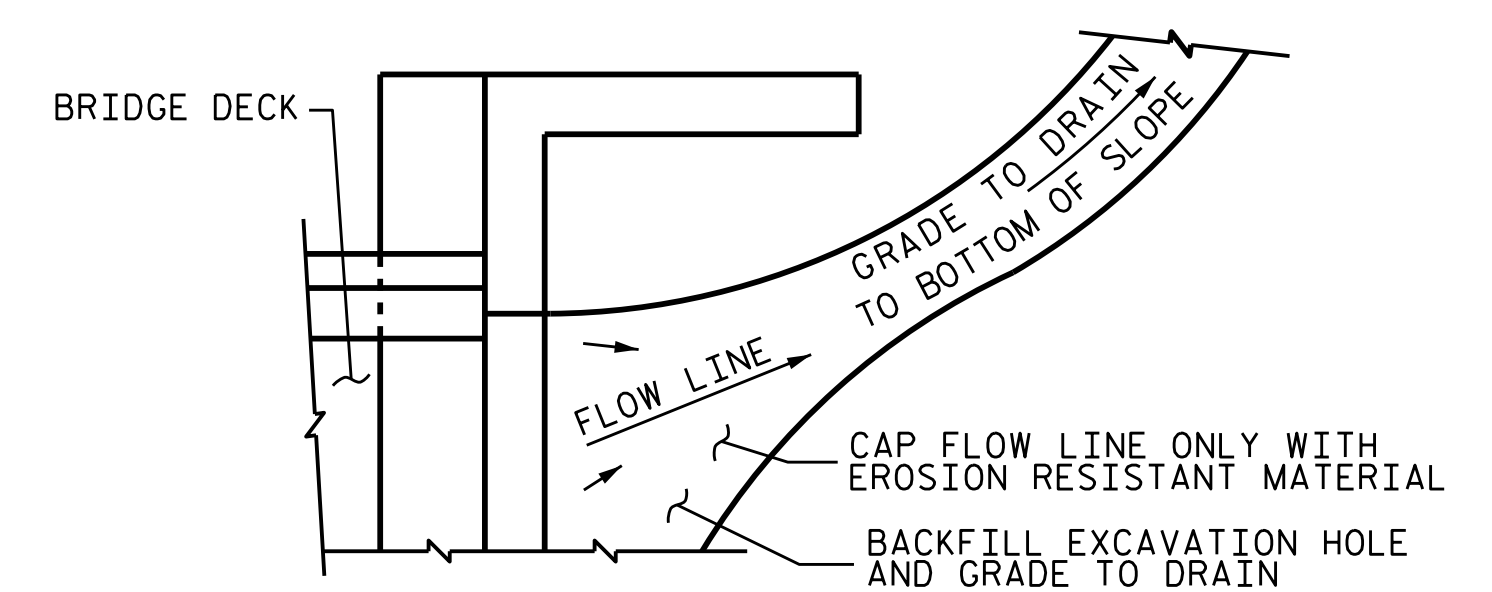
**SECTION N-N  
SIDEWALK DETAILS**



NOTE: IMMEDIATELY AFTER THE CONSTRUCTION OF THE APPROACH SLAB, THE CONTRACTOR SHALL PROVIDE TEMPORARY BERM AND SLOPE DRAIN. CONTRACTOR SHALL GRADE TO PIPE INLET AND PROVIDE EROSION RESISTANT MATERIAL AS SHOWN. THE EROSION RESISTANT MATERIAL SHALL BE EITHER 1) ASPHALT PLANT MIX, TYPE 1 OR TYPE 2, MIN. 2" DEPTH, 2) EROSION CONTROL MAT, OR 3) CONCRETE, AS DIRECTED BY THE ENGINEER. THE SLOPE DRAIN SHALL CONSIST OF A NON-PERFORATED TEMPORARY DRAINAGE PIPE, 12 INCHES IN DIAMETER.

**PLAN VIEW  
SECTION R-R  
SECTION S-S  
TEMPORARY BERM AND SLOPE DRAIN DETAILS**

(TO BE USED WHEN SHOULDER BERM GUTTER IS REQUIRED)



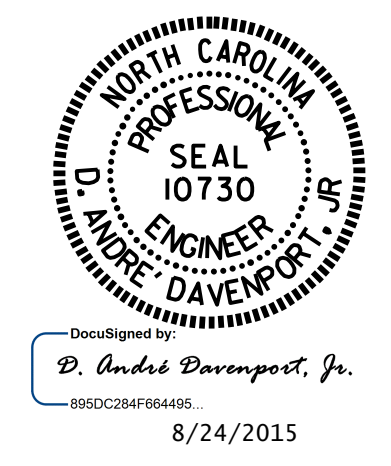
NOTE: IF THE APPROACH SLAB IS NOT CONSTRUCTED IMMEDIATELY AFTER THE BACKFILLING OF THE END BENT EXCAVATION, GRADE TO DRAIN TO THE BOTTOM OF THE SLOPE AND PROVIDE EROSION RESISTANT MATERIAL, SUCH AS FIBERGLASS ROVING OR AS DIRECTED BY THE ENGINEER TO PREVENT SOIL EROSION AND TO PROTECT THE AREA ADJACENT TO THE STRUCTURE. THE CONTRACTOR WILL BE REQUIRED TO REMOVE THESE MATERIALS PRIOR TO CONSTRUCTION OF THE APPROACH SLAB.

**TEMPORARY DRAINAGE DETAILS**

PROJECT NO. B-3159  
DAVIDSON COUNTY  
 STATION: 13+41.72 -L-

SHEET 3 OF 3

|  |     |       |     |     |                   |
|--|-----|-------|-----|-----|-------------------|
| STATE OF NORTH CAROLINA<br>DEPARTMENT OF TRANSPORTATION<br>RALEIGH |     |       |     |     |                   |
| STANDARD<br>BRIDGE APPROACH<br>SLAB DETAILS                        |     |       |     |     |                   |
| REVISIONS  |     |       |     |     | SHEET NO.<br>S-43 |
| NO.  | BY: | DATE: | NO. | BY: | DATE:             |
| 1  |     |       | 3   |     |                   |
| 2  |     |       | 4   |     |                   |
| TOTAL SHEETS<br>43   |     |       |     |     |                   |



|                |              |        |                        |
|----------------|--------------|--------|------------------------|
| ASSEMBLED BY : | R.L. CHESSON | DATE : | 6-4-14                 |
| CHECKED BY :   | R. P. PATEL  | DATE : | 6-9-14                 |
| DRAWN BY :     | FCJ          | 11/88  | REV. 5/7/03 RWW/JTE    |
| CHECKED BY :   | ARB          | 11/88  | REV. 5/1/06RRR MAA/KMM |
|                |              |        | REV. 10/1/11 MAA/GM    |