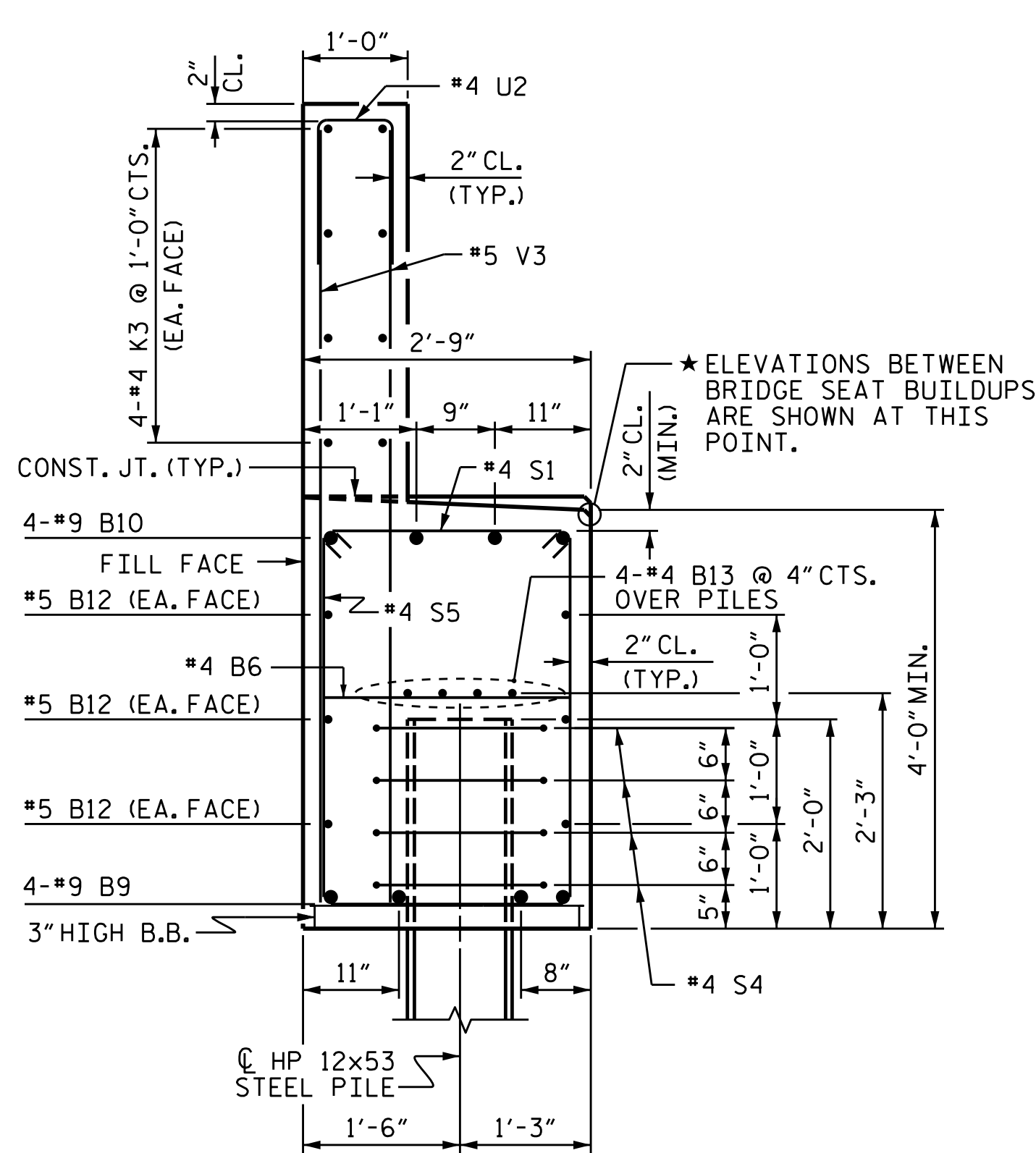
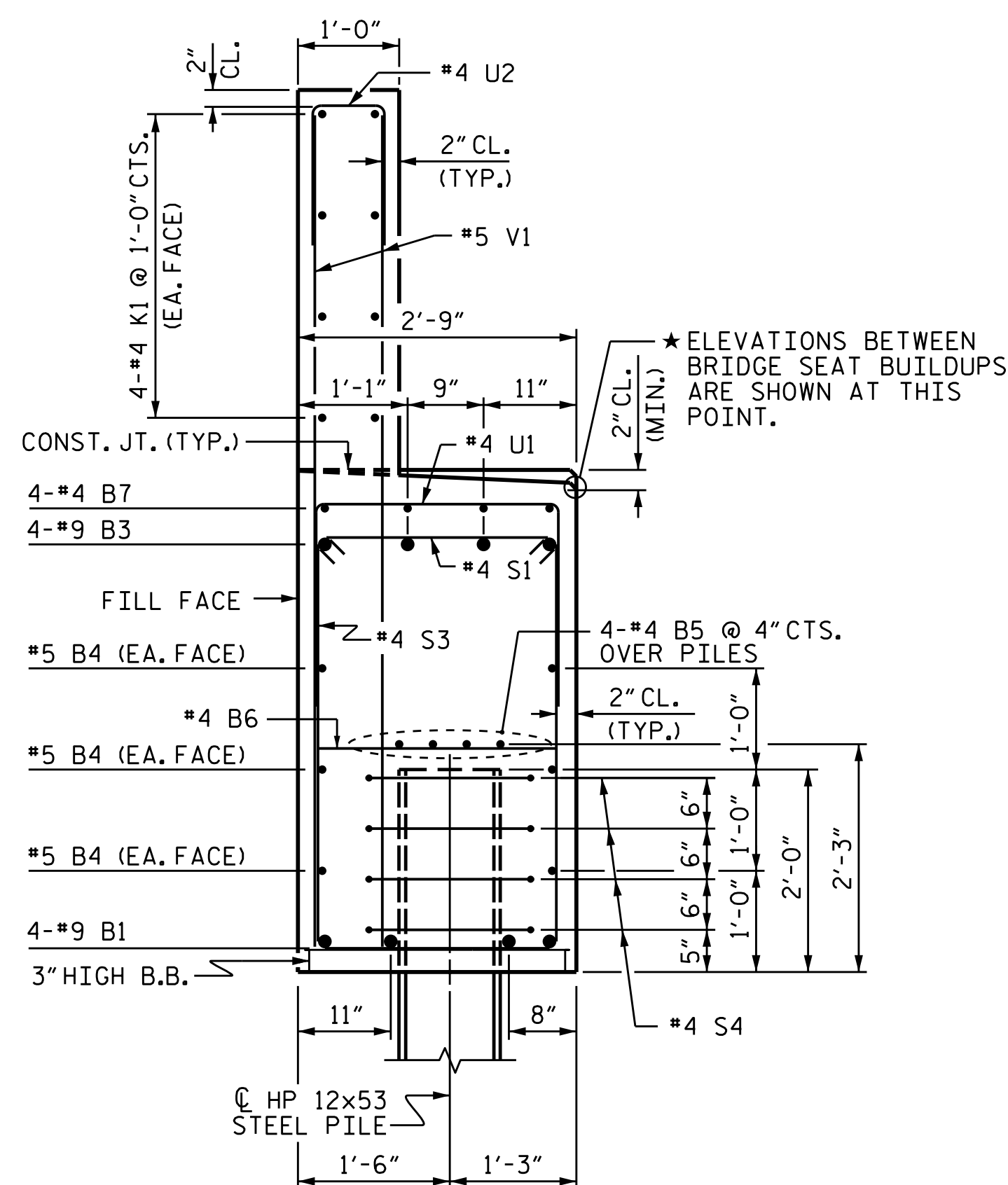


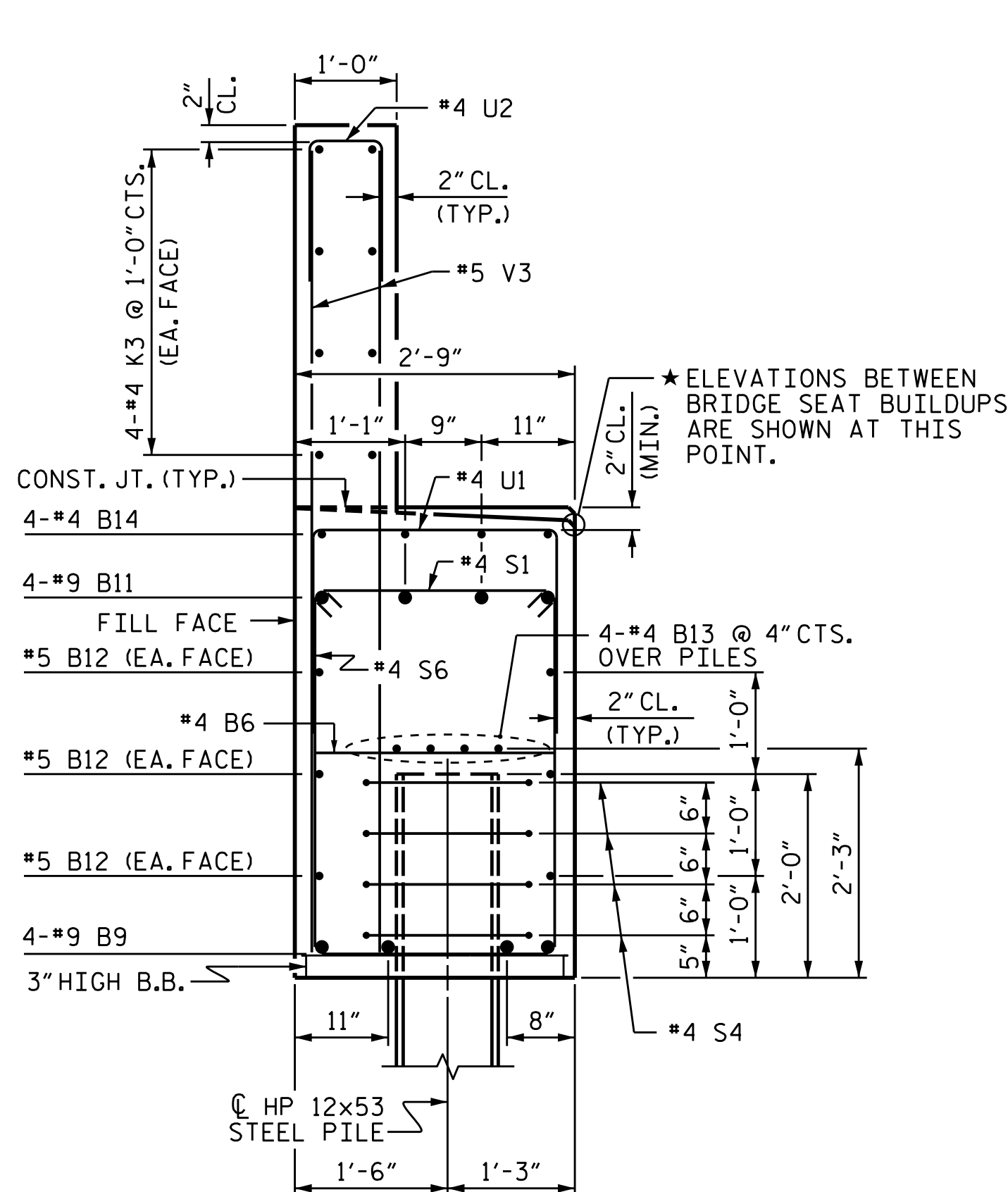
SECTION A-A



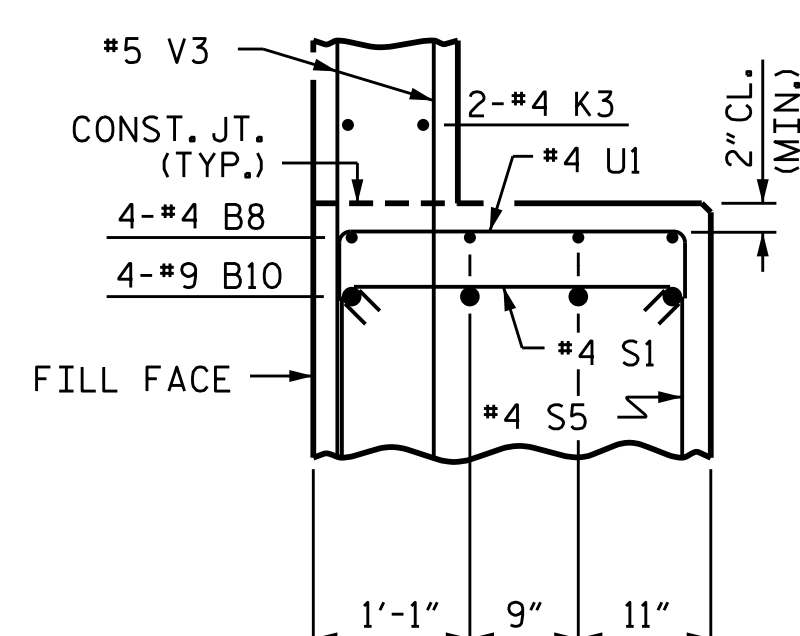
SECTION C-C



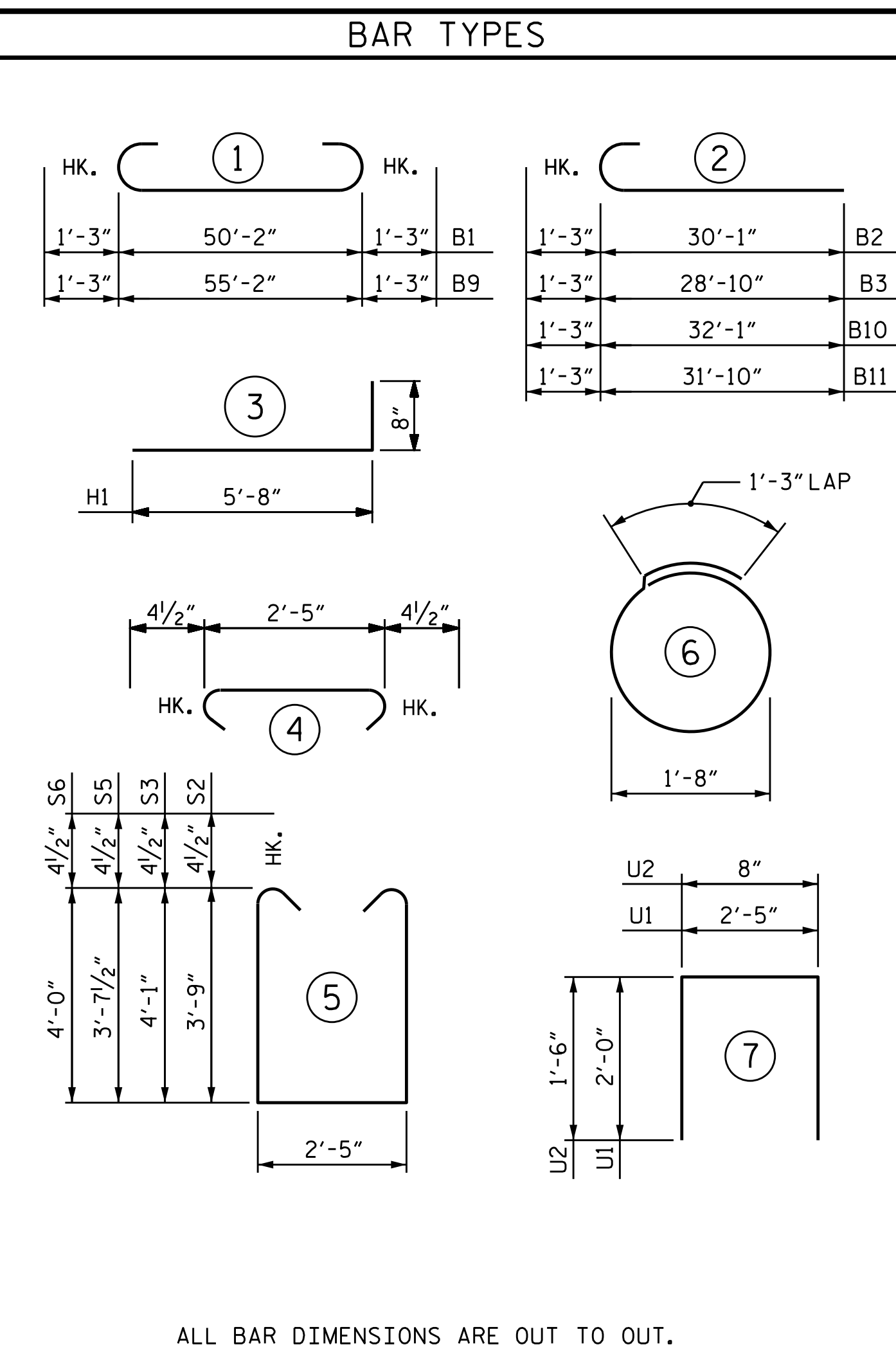
SECTION B-B



SECTION D-D

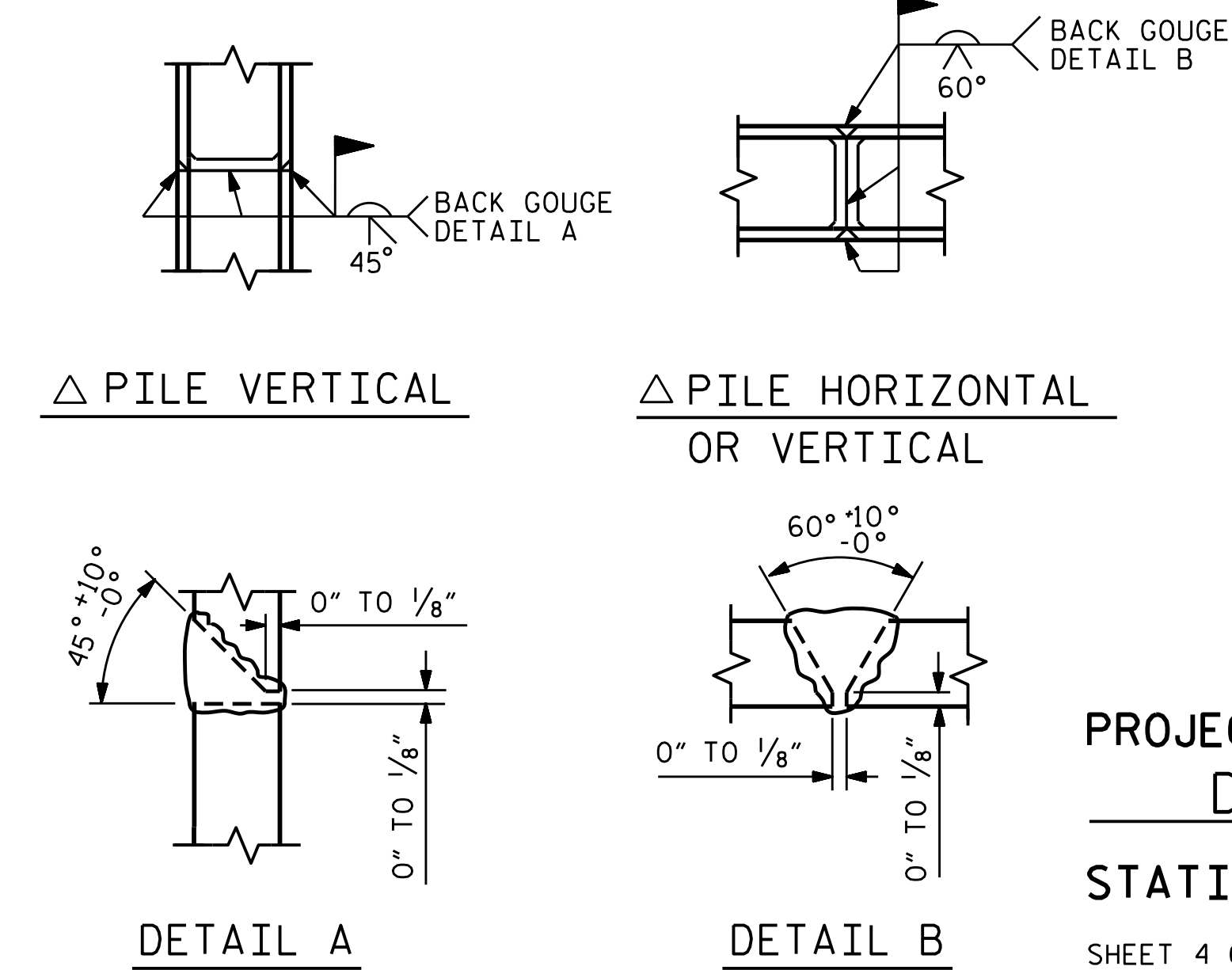


SECTION E-E



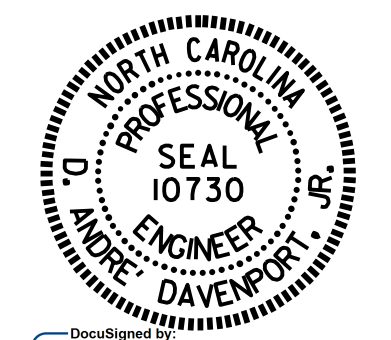
ALL BAR DIMENSIONS ARE OUT TO OUT.

BILL OF MATERIAL											
END BENT 1											
STAGE I					STAGE II						
BAR NO.	SIZE	TYPE	LENGTH	WEIGHT	BAR NO.	SIZE	TYPE	LENGTH	WEIGHT		
B1	4	#9	1	52'-8"	716	B6	16	#4	STR	2'-5"	26
B2	4	#9	2	31'-4"	426	B8	12	#4	STR	3'-2"	25
B3	4	#9	2	30'-1"	409	B9	4	#9	1	57'-8"	784
B4	6	#5	STR	50'-0"	313	B10	4	#9	2	33'-4"	453
B5	8	#4	STR	26'-5"	141	B11	4	#9	2	33'-1"	450
B6	15	#4	STR	2'-5"	24	B12	6	#5	STR	55'-4"	346
B7	4	#4	STR	8'-6"	23	B13	8	#4	STR	28'-11"	155
B8	12	#4	STR	3'-2"	25	B14	4	#4	STR	9'-6"	25
D1	4	#6	STR	4'-0"	24						
H1	24	#4	3	6'-4"	102	H1	24	#4	2	6'-4"	102
K1	16	#4	STR	27'-9"	297	K2	6	#4	STR	2'-7"	10
K2	6	#4	STR	2'-7"	10	K3	16	#4	STR	28'-11"	309
S1	56	#4	4	3'-2"	118	S1	58	#4	4	3'-2"	123
S2	24	#4	5	10'-8"	171	S4	28	#4	6	6'-6"	122
S3	32	#4	5	11'-4"	242	S5	24	#4	5	10'-5"	167
S4	28	#4	6	6'-6"	122	S6	34	#4	5	11'-2"	254
U1	15	#4	7	6'-5"	64	U1	16	#4	6	6'-5"	69
U2	48	#4	7	3'-8"	118	U2	53	#4	6	3'-8"	130
V1	96	#5	STR	7'-6"	751	V3	106	#5	STR	7'-4"	811
V2	18	#4	STR	9'-6"	114	V4	18	#4	STR	9'-5"	113
REINFORCING STEEL				LBS.	4,210	REINFORCING STEEL				LBS.	4,474
CLASS A CONCRETE BREAKDOWN					CLASS A CONCRETE BREAKDOWN						
POUR #1	CAP & LOWER PART OF WING W1		C.Y.	24.0	POUR #1	CAP & LOWER PART OF WING W2		C.Y.	25.8		
POUR #2	BACKWALL & UPPER PART OF WING W1		C.Y.	8.5	POUR #2	BACKWALL & UPPER PART OF WING W2		C.Y.	9.2		
TOTAL				C.Y.	32.5	TOTAL				C.Y.	35.0
HP 12x53 STEEL PILES				LIN. FT.	355	HP 12x53 STEEL PILES				LIN. FT.	240



PILE SPLICE DETAILS

△ POSITION OF PILE DURING WELDING.



PROJECT NO. B-3159  
DAVIDSON COUNTY  
 STATION: 13+41.72 -L-  
 SHEET 4 OF 4

STATE OF NORTH CAROLINA DEPARTMENT OF TRANSPORTATION RALEIGH					
SUBSTRUCTURE					
END BENT 1					
REVISIONS					SHEET NO.
NO.	BY:	DATE:	NO.	BY:	DATE:
1			3		
2			4		
					S-30
					TOTAL SHEETS 43

DRAWN BY : K. D. LAYNE DATE : 5/15/15  
 CHECKED BY : H. P. KIM DATE : 5/28/15  
 DESIGN ENGINEER OF RECORD: R. L. CHESSON DATE : 6/10/15