

DEAD LOAD DEFLECTION TABLE FOR GIRDERS																																	
0.6" Ø LOW RELAXATION	SPANS A & B																																
	GIRDERS 1 THROUGH 5, 10, 11 & 12											GIRDERS 6 & 7										GIRDERS 8 & 9											
	0	.1	.2	.3	.4	.5	.6	.7	.8	.9	0	0	.1	.2	.3	.4	.5	.6	.7	.8	.9	0	0	.1	.2	.3	.4	.5	.6	.7	.8	.9	0
CAMBER (GIRDER ALONE IN PLACE) ↑	0.0	0.038	0.073	0.099	0.116	0.122	0.116	0.099	0.073	0.038	0.0	0.0	0.038	0.073	0.099	0.116	0.122	0.116	0.099	0.073	0.038	0.0	0.0	0.038	0.073	0.099	0.116	0.122	0.116	0.099	0.073	0.038	0.0
* DEFLECTION DUE TO SUPERIMPOSED D.L. ↓	0.0	0.032	0.061	0.084	0.098	0.103	0.098	0.084	0.061	0.032	0.0	0.0	0.023	0.043	0.059	0.069	0.072	0.069	0.059	0.043	0.023	0.0	0.0	0.029	0.055	0.075	0.088	0.092	0.088	0.075	0.055	0.029	0.0
FINAL CAMBER ↑	0	1/16"	1/8"	3/16"	3/16"	1/4"	3/16"	3/16"	1/8"	1/16"	0	0	3/16"	3/8"	1/2"	9/16"	5/8"	9/16"	1/2"	3/8"	3/16"	0	0	1/8"	3/16"	5/16"	5/16"	3/8"	5/16"	5/16"	3/16"	1/8"	0

* INCLUDES FUTURE WEARING SURFACE

ALL VALUES ARE SHOWN IN FEET (DECIMAL FORM) EXCEPT "FINAL CAMBER", WHICH IS GIVEN IN INCHES (FRACTION FORM).

NOTES

ALL PRESTRESSING STRANDS SHALL BE 7-WIRE LOW-RELAXATION GRADE 270 STRANDS AND SHALL CONFORM TO AASHTO M203 EXCEPT FOR SAMPLING REQUIREMENTS WHICH SHALL BE IN ACCORDANCE WITH THE STANDARD SPECIFICATIONS.

ALL REINFORCING STEEL SHALL BE GRADE 60.

APPLY EPOXY PROTECTIVE COATING TO END OF GIRDER SURFACES INDICATED IN ELEVATION VIEW.

EMBEDDED PLATE "B-1" SHALL BE GALVANIZED IN ACCORDANCE WITH THE STANDARD SPECIFICATIONS.

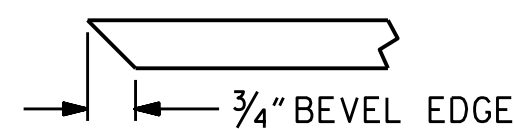
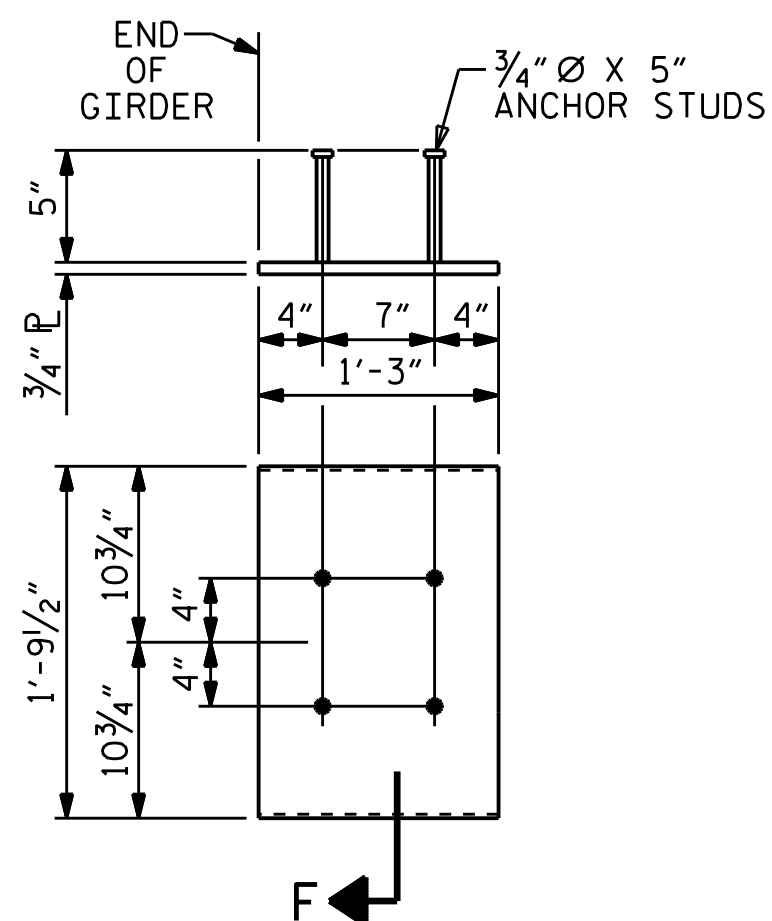
ANCHOR STUDS SHALL CONFORM TO AASHTO M169 GRADES 1010 THROUGH 1020 OR APPROVED EQUAL AND SHALL MEET THE TYPE "B" REQUIREMENTS OF SUBSECTION 7.3 OF THE ANSI/AASHTO/AWS D1.5 BRIDGE WELDING CODE.

AT ENDS OF GIRDERS TO BE EMBEDDED IN CONCRETE DIAPHRAGMS OR END WALLS, PRESTRESSING STRANDS MAY EXTEND A MAXIMUM OF 2" BEYOND THE GIRDER ENDS. OTHERWISE, PRESTRESSING STRANDS SHALL BE CUT FLUSH WITH THE GIRDER ENDS.

THE TRANSFER OF LOAD FROM THE ANCHORAGES TO THE GIRDER SHALL BE DONE WHEN CONCRETE HAS REACHED A COMPRESSIVE STRENGTH OF NOT LESS THAN 6,300 PSI.

DEPENDING ON THE TYPE OF SYSTEM USED TO SUPPORT THE DECK SLAB FORMS, PRESET ANCHORS MAY BE NECESSARY IN THE PRESTRESSED CONCRETE GIRDER.

THE TOP SURFACE OF THE GIRDER, EXCLUDING THE OUTSIDE 4", SHALL BE RAKED TO A DEPTH OF 1/4".



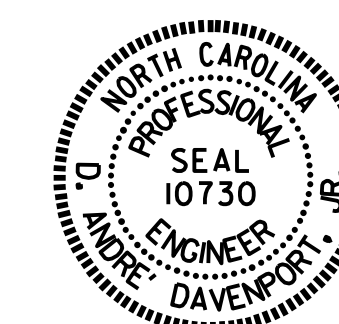
SECTION "F"
(SEE NOTES)

EMBEDDED PLATE "B-1" DETAILS
FOR AASHTO TYPE III GIRDER
(2 REQ'D PER GIRDER)

PROJECT NO. B-3159
DAVIDSON COUNTY
STATION: 13+41.72 -L-

SHEET 2 OF 2

STATE OF NORTH CAROLINA DEPARTMENT OF TRANSPORTATION RALEIGH					
STANDARD PRESTRESSED CONCRETE GIRDER CONTINUOUS FOR LIVE LOAD DETAILS					
REVISIONS					SHEET NO. S-15
NO.	BY:	DATE:	NO.	BY:	DATE:
1			3		
2			4		
TOTAL SHEETS 43					



ASSEMBLED BY : M.K. BEARD	DATE : 7/14/15
CHECKED BY : J.K. BOWLES	DATE : 7/14/15
DRAWN BY : ELR 11/91	REV. 10/1/11
CHECKED BY : GRP 11/91	REV. 1/15
MAA/GM	DESIGN ENGINEER OF RECORD:
MAA/TMG	H.A. LOCKLEAR
MAA/TMG	DATE : 7/14/15