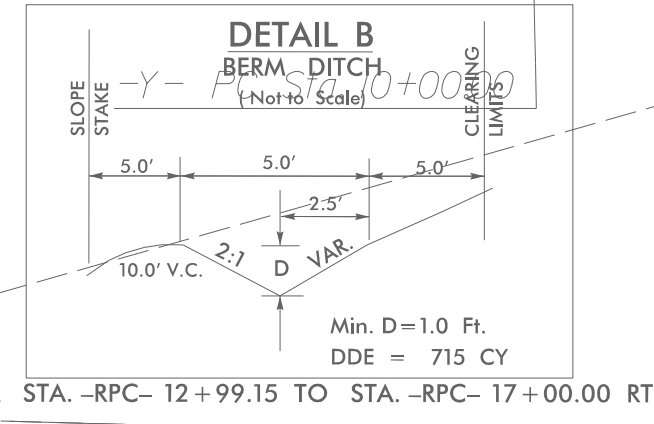
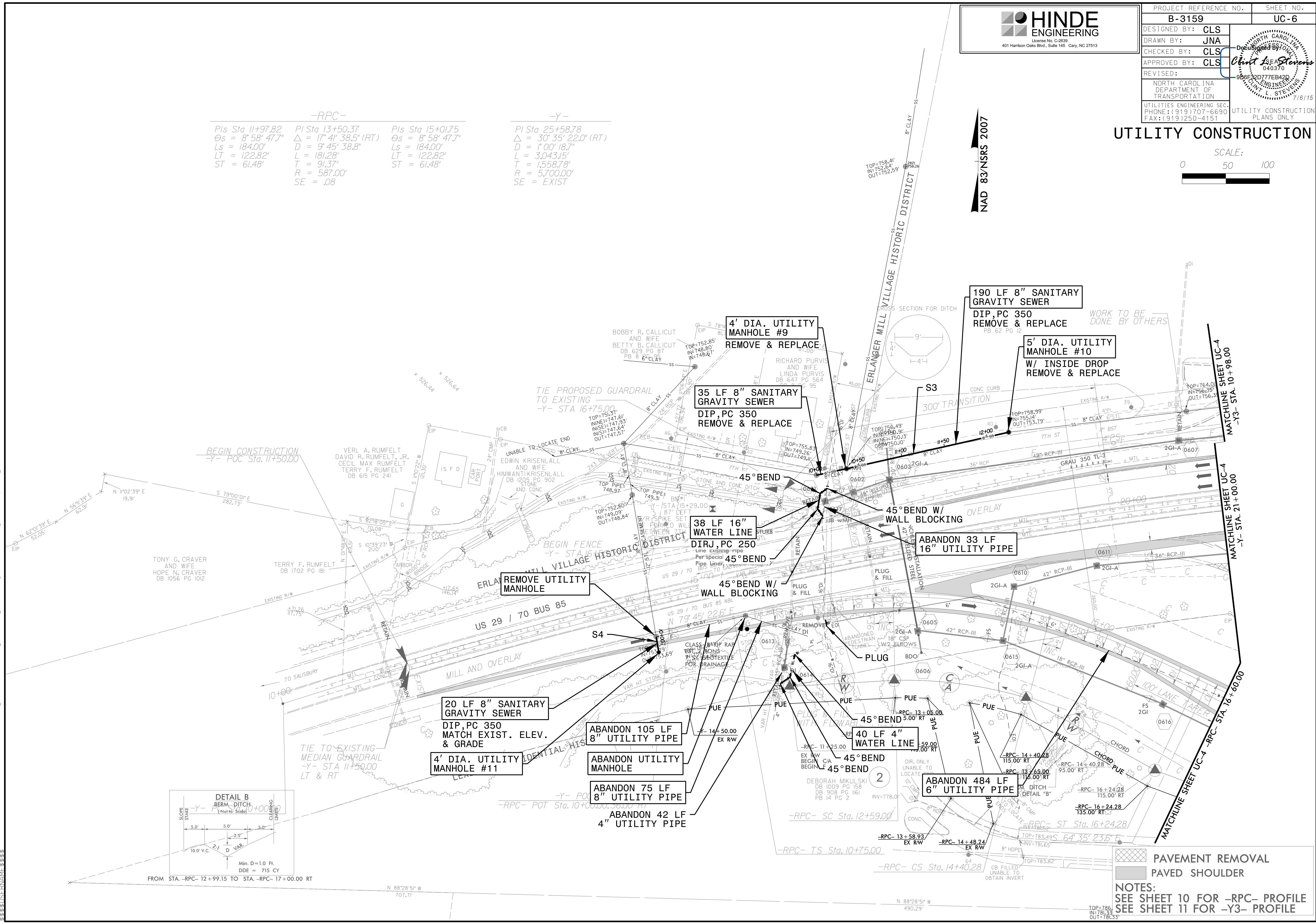


UTILITY CONSTRUCTION



-RPC-			-Y-		
Pls Sta 11+97.82	Pls Sta 13+50.37	Pls Sta 15+01.75	Pls Sta 25+58.78		
$\Theta_s = 8^\circ 58' 47.7''$	$\Delta = 17^\circ 41' 38.5''$ (RT)	$\Theta_s = 8^\circ 58' 47.7''$	$\Delta = 30^\circ 35' 22.0''$ (RT)		
$L_s = 184.00'$	$D = 9^\circ 45' 38.8''$	$L_s = 184.00'$	$D = 1^\circ 00' 18.7''$		
$LT = 122.82'$	$L = 181.28'$	$LT = 122.82'$	$L = 3.04315'$		
$ST = 61.48'$	$T = 91.37'$	$ST = 61.48'$	$R = 1,558.78'$		
	$R = 587.00'$		$R = 5,700.00'$		
	$SE = .08$		$SE = EXIST$		

NAD 83/NRS 2007



PAVEMENT REMOVAL
 PAVED SHOULDER
 NOTES:
 SEE SHEET 10 FOR -RPC- PROFILE
 SEE SHEET 11 FOR -Y3- PROFILE

26 JUL 2015 15:39 PROJECTS\2012\20128001 B-3159\Design\Utilities\Engineering\UC\Proj\B3159_uc-6.uc06.psh.dgn
 26 JUL 2015 15:39 PROJECTS\2012\20128001 B-3159\Design\Utilities\Engineering\UC\Proj\B3159_uc-6.uc06.psh.dgn
 26 JUL 2015 15:39 PROJECTS\2012\20128001 B-3159\Design\Utilities\Engineering\UC\Proj\B3159_uc-6.uc06.psh.dgn