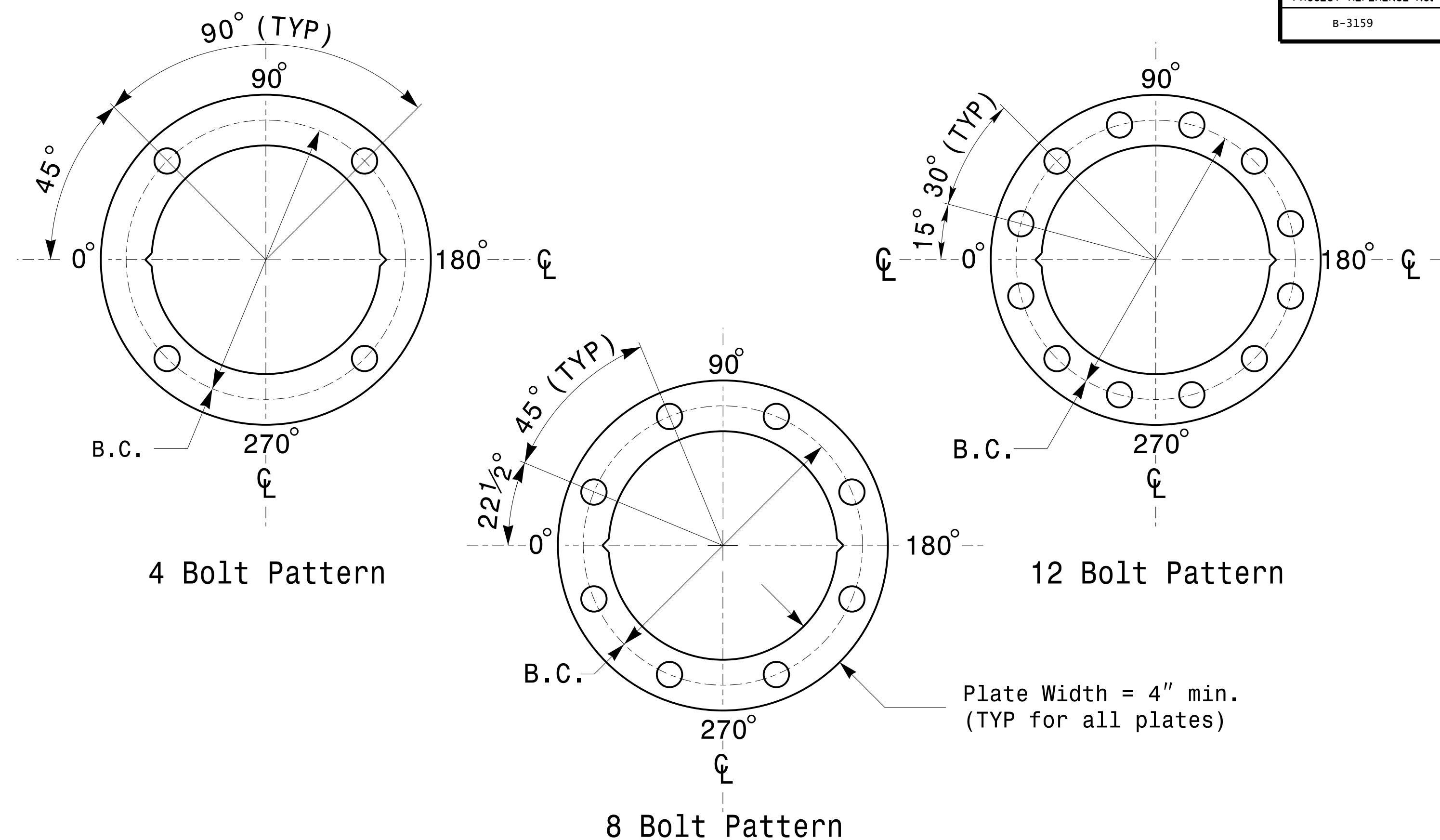


Note: Unless otherwise specified, locate Terminal Compartment 1 foot above the pole base plate at 180 degrees on the pole's radial index.

Terminal Compartment Detail



Construct Templates and Plates from 1/4 inch min. thick Steel. Galvanizing is not required.
Base Plate Template and Anchor Bolt Lock Plate Details

MFG _____	MFG. DATE: MM/YY _____
SHAFT D/T/L/Y _____	
ARM-A D/T/L/Y _____	
ARM-B D/T/L/Y _____	
A.B. DIA./B.C./L/Y _____	
NCDOT STANDARD _____	

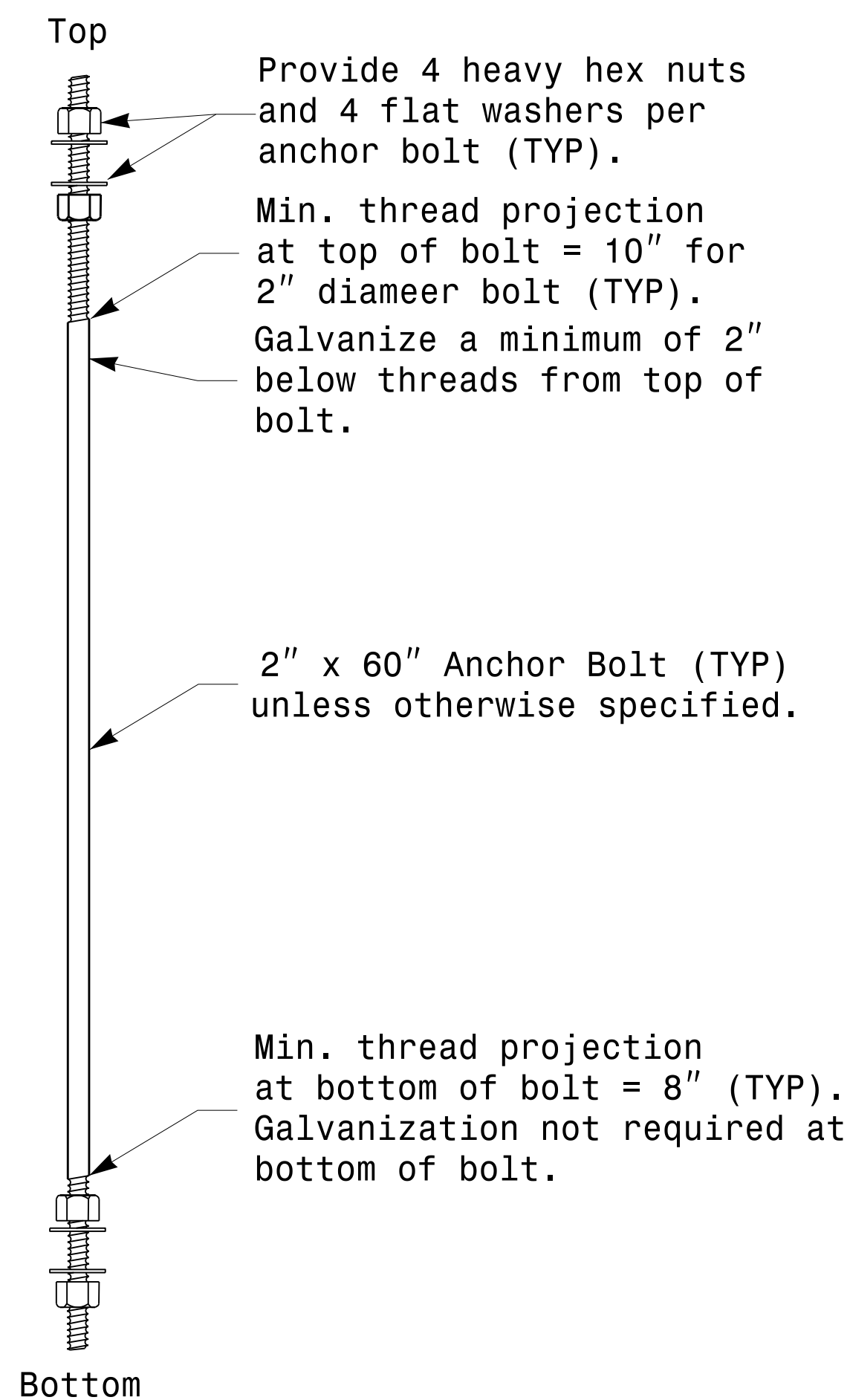
Shaft I.D. Tag
 (Provide on Strain Poles and Mast Arm Poles)

MFG _____	MFG. DATE: MM/YY _____
SECTION D/T/L/Y _____	
NCDOT STANDARD _____	

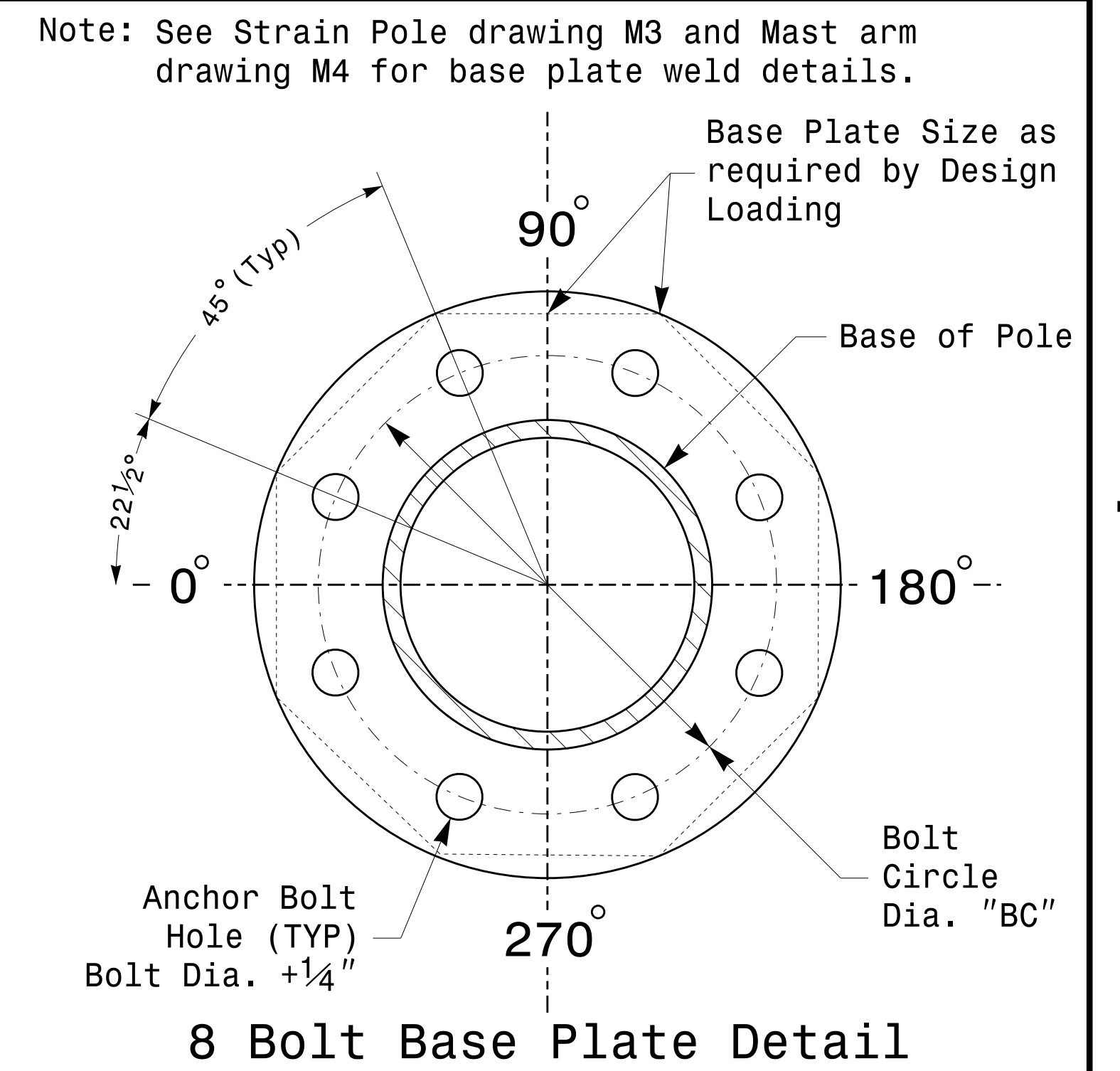
Arm I.D. Tag
 (Provide on each section of a multi-section mast arm)

- Notes:
- 1) D= Diameter, T= Thickness, L= Length, Y= Yield Strength
 - 2) A.B. = Anchor Bolt
 - 3) B.C. = Bolt Circle of Anchor Bolts
 - 4) If Custom Design, use "NCDOT STANDARD" line for pole I.D. number and Signal Inv. Number.
 - 5) See drawing M4 for mounting positions of I.D. tags.

Identification Tag Details



Anchor Bolt Detail



	Typical Fabrication Details Common To All Metal Poles		
	PLAN DATE: AUGUST 2013 PREPARED BY: N. BITTING	DESIGNED BY: C.F. ANDREWS REVIEWED BY: D.C. SARKAR	
SCALE: NONE	REVISIONS: _____	INIT. DATE: _____	DocuSign by: Dinesh C. Sarkar 8/26/2014 DATE: _____ SIG. INVENTORY NO. _____

06-AUG-2014 08:55
 S:\IT\SS\115\SIGNAL\Signal Design\Section\Eastern Region\M2_Fab_Details\All Poles.dgn
 Top | Lowy

Fabrication Details – All Poles