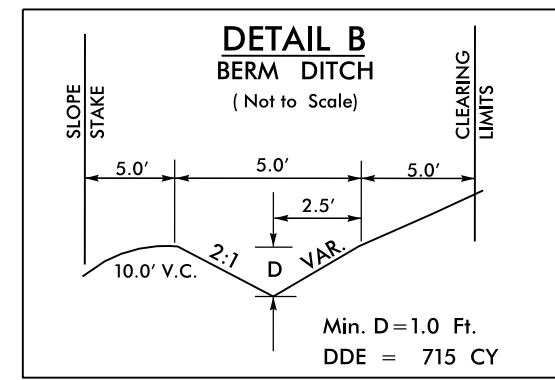


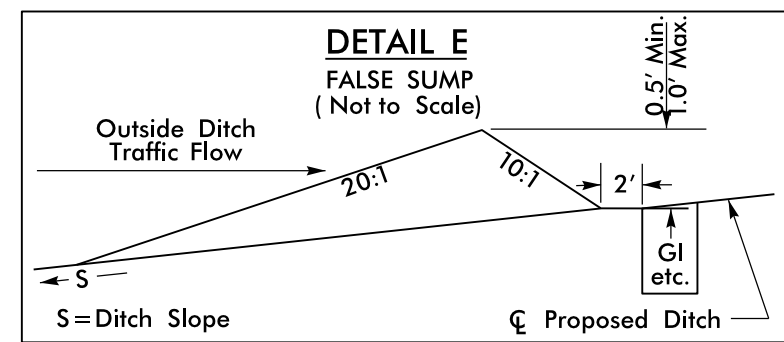
PROJECT REFERENCE NO. B-3159		SHEET NO. EC-10/CONST.6	
RW SHEET NO.			
ROADWAY DESIGN ENGINEER		HYDRAULICS ENGINEER	

NAD 83/NSRS 2007

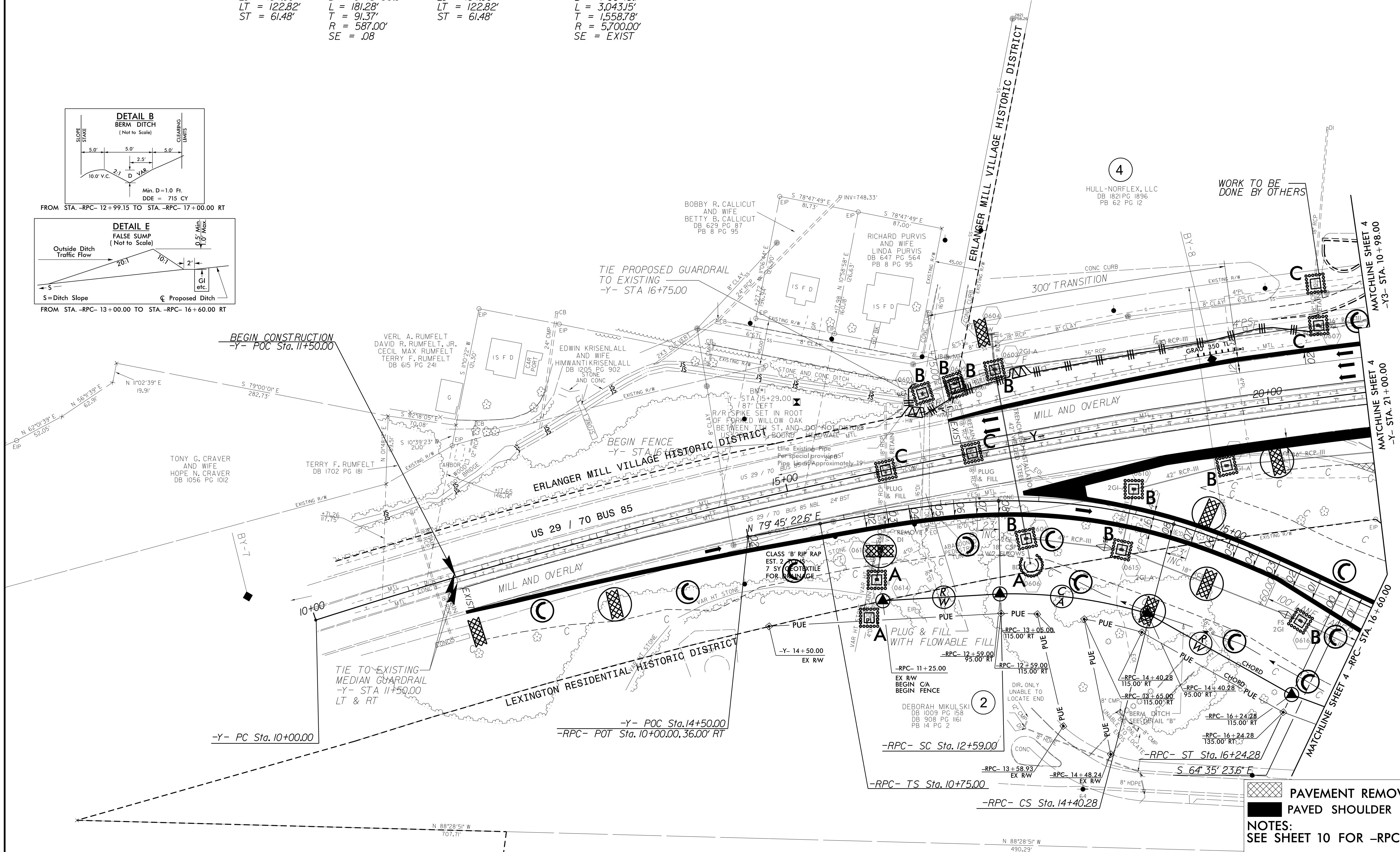
-RPC-			-Y-		
PIs Sta 11+97.82	PI Sta 13+50.37	PIs Sta 15+01.75	PI Sta 25+58.78		
$\Theta_s = 8^\circ 58' 47.7''$	$\Delta = 17^\circ 41' 38.5''$ (RT)	$\Theta_s = 8^\circ 58' 47.7''$	$\Delta = 30^\circ 35' 22.0''$ (RT)		
Ls = 184.00'	D = 9' 45" 38.8"	Ls = 184.00'	D = 1' 00" 18.7"		
LT = 122.82'	L = 181.28'	LT = 122.82'	L = 3,043.15'		
ST = 61.48'	T = 91.37'	ST = 61.48'	T = 1,558.78'		
	R = 587.00'		R = 5,700.00'		
	SE = .08		SE = EXIST		



FROM STA. -RPC- 12+99.15 TO STA. -RPC- 17+00.00 RT



FROM STA. -RPC- 13+00.00 TO STA. -RPC- 16+60.00 RT



WORK TO BE DONE BY OTHERS

PAVEMENT REMOVAL  
 PAVED SHOULDER  
 NOTES:  
 SEE SHEET 10 FOR -RPC- PROFILE