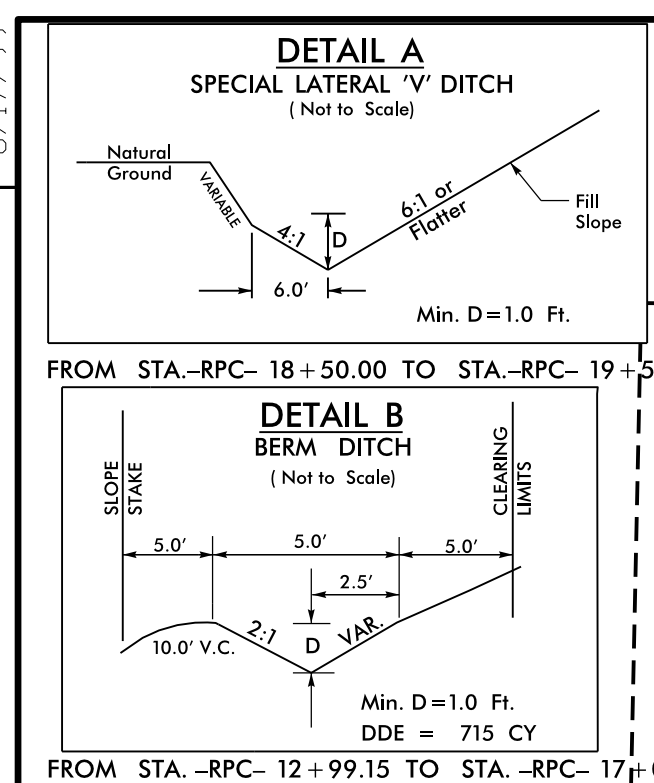
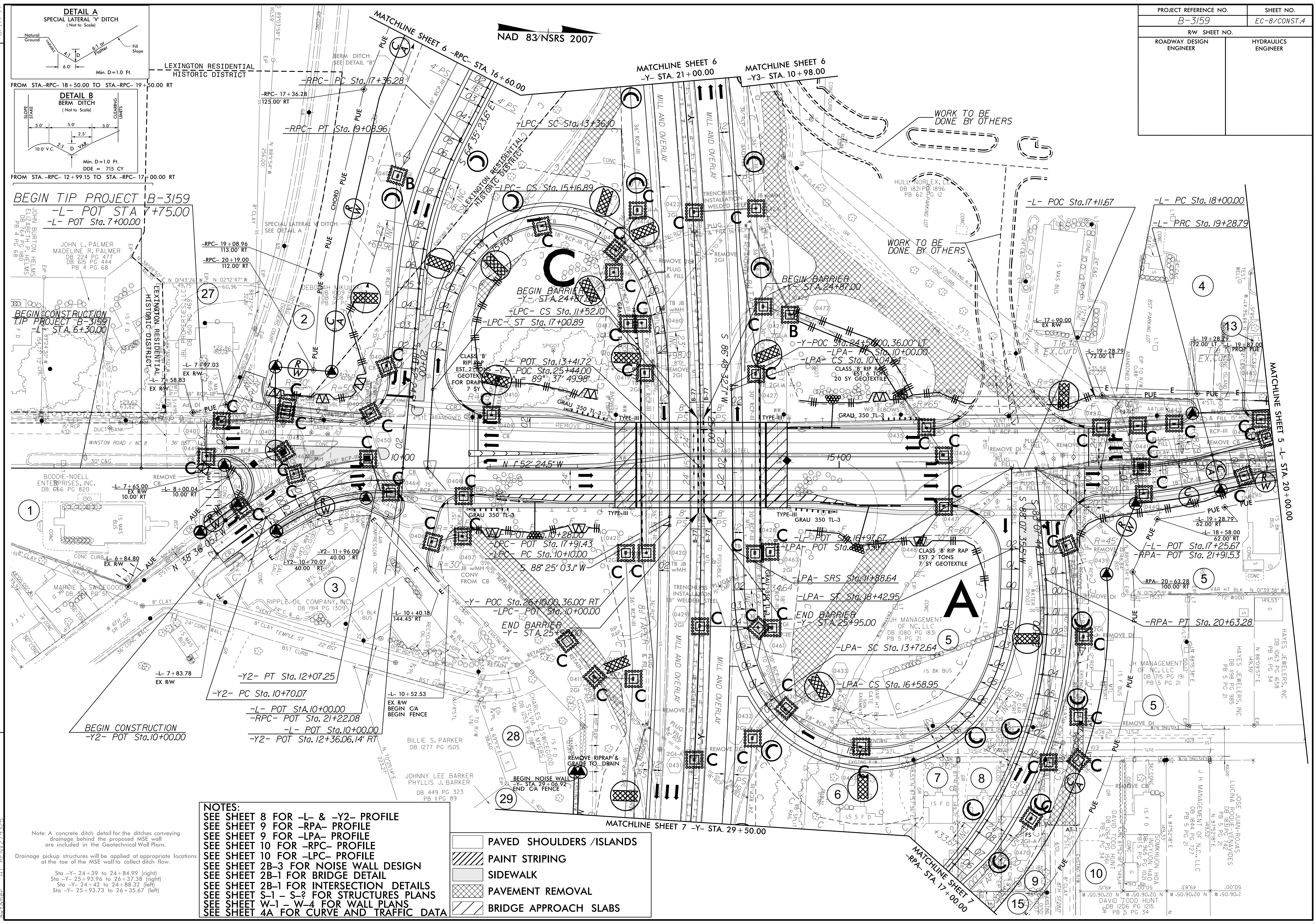


| | | | |
|---------------------------------|--|---------------------------|--|
| PROJECT REFERENCE NO. B-3159 | | SHEET NO. EC-8/CONST.4 | |
| RW SHEET NO. | | | |
| ROADWAY DESIGN ENGINEER | | HYDRAULICS ENGINEER | |



BEGIN TIP PROJECT B-3159
-L- POT STA. 7+75.00
-L- POT STA. 7+00.00

JOHN BURTON HELMS
DB 615 PG 444
PB 4 PG 68

BEGIN CONSTRUCTION TIP PROJECT B-3159
-L- POT STA. 6+30.00

JOHN L. PALMER
MADELINE R. PALMER
DB 224 PG 477
DB 615 PG 444
PB 4 PG 68

NOTES:
SEE SHEET 8 FOR -L- & -Y2- PROFILE
SEE SHEET 9 FOR -RPA- PROFILE
SEE SHEET 9 FOR -LPA- PROFILE
SEE SHEET 10 FOR -RPC- PROFILE
SEE SHEET 10 FOR -LPC- PROFILE
SEE SHEET 2B-3 FOR NOISE WALL DESIGN
SEE SHEET 2B-1 FOR BRIDGE DETAIL
SEE SHEET 2B-1 FOR INTERSECTION DETAILS
SEE SHEET S-1 - S-2 FOR STRUCTURES PLANS
SEE SHEET W-1 - W-4 FOR WALL PLANS
SEE SHEET 4A FOR CURVE AND TRAFFIC DATA

- PAVED SHOULDERS / ISLANDS
- PAINT STRIPING
- SIDEWALK
- PAVEMENT REMOVAL
- BRIDGE APPROACH SLABS

Note: A concrete ditch detail for the ditches conveying drainage behind the proposed MSE wall are included in the Geotechnical Wall Plans.

Drainage pickup structures will be applied at appropriate locations at the toe of the MSE wall to collect ditch flow.

Sta -Y- 24+39 to 24+84.99 (right)
Sta -Y- 25+93.96 to 26+37.38 (right)
Sta -Y- 24+42 to 24+88.32 (left)
Sta -Y- 25+93.73 to 26+35.67 (left)

REVISIONS

8/17/99
20-JUL-2015 08:01
R:\Environmental\Design\B3159_EC_psh_04.dgn
Author: AT
Printer: JH