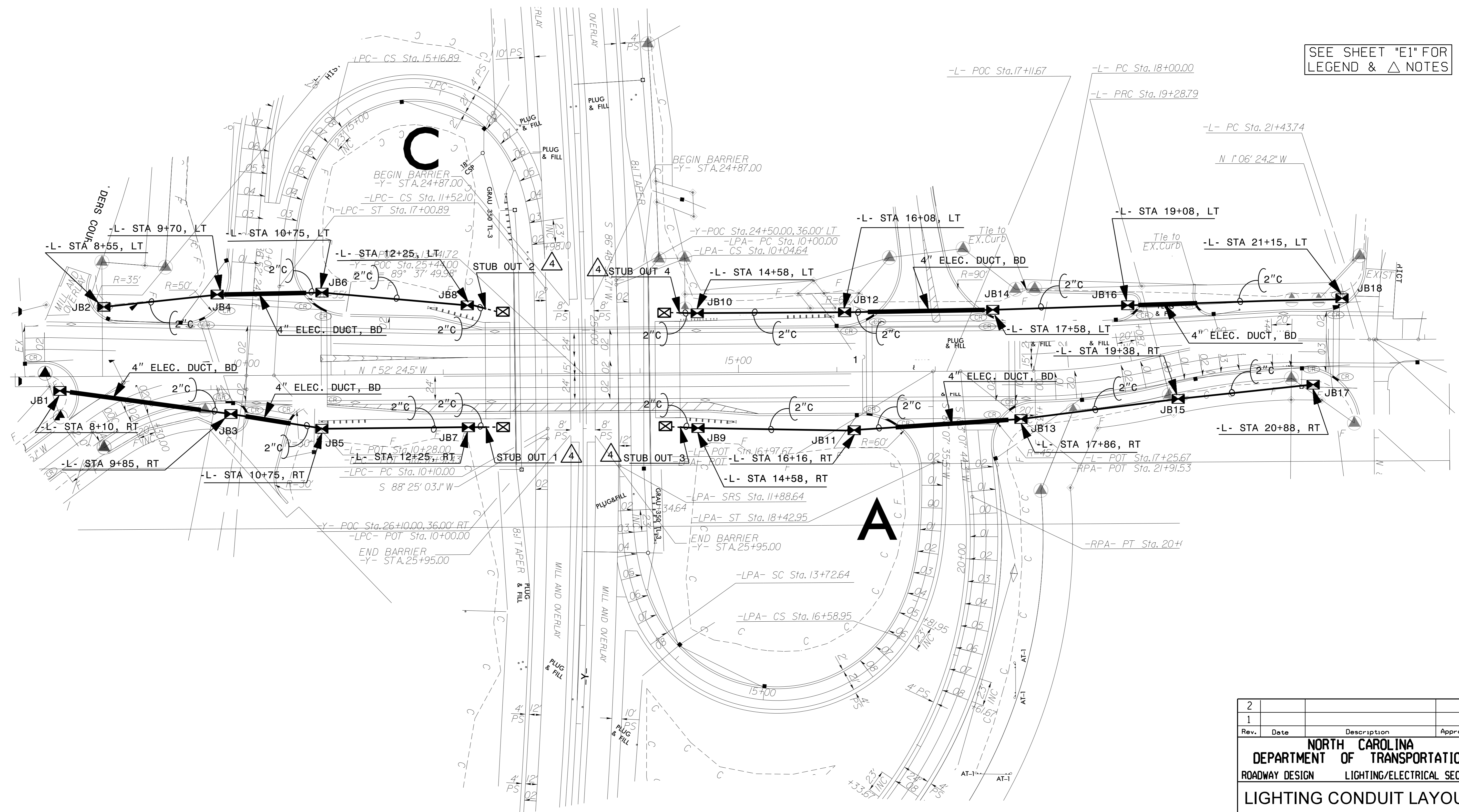


SEE SHEET "E1" FOR
LEGEND & Δ NOTES



07-JUL-2015 12:37
 R:\Lighting\TIP\VECS\Plan Sheet\220-004-B3159-LE-E2.dgn
 sksare

2			
1			
Rev.	Date	Description	Approved
NORTH CAROLINA DEPARTMENT OF TRANSPORTATION ROADWAY DESIGN LIGHTING/ELECTRICAL SECTION			
LIGHTING CONDUIT LAYOUT BRIDGE NO.27 OVER US 29-64-70/I-85 BUS. ON NC 8/US 52 BETWEEN SR 1844 AND SR 1408 DAVIDSON COUNTY			
Drawn By:	SKS	Approved By:	PKC
Dwg No.:			