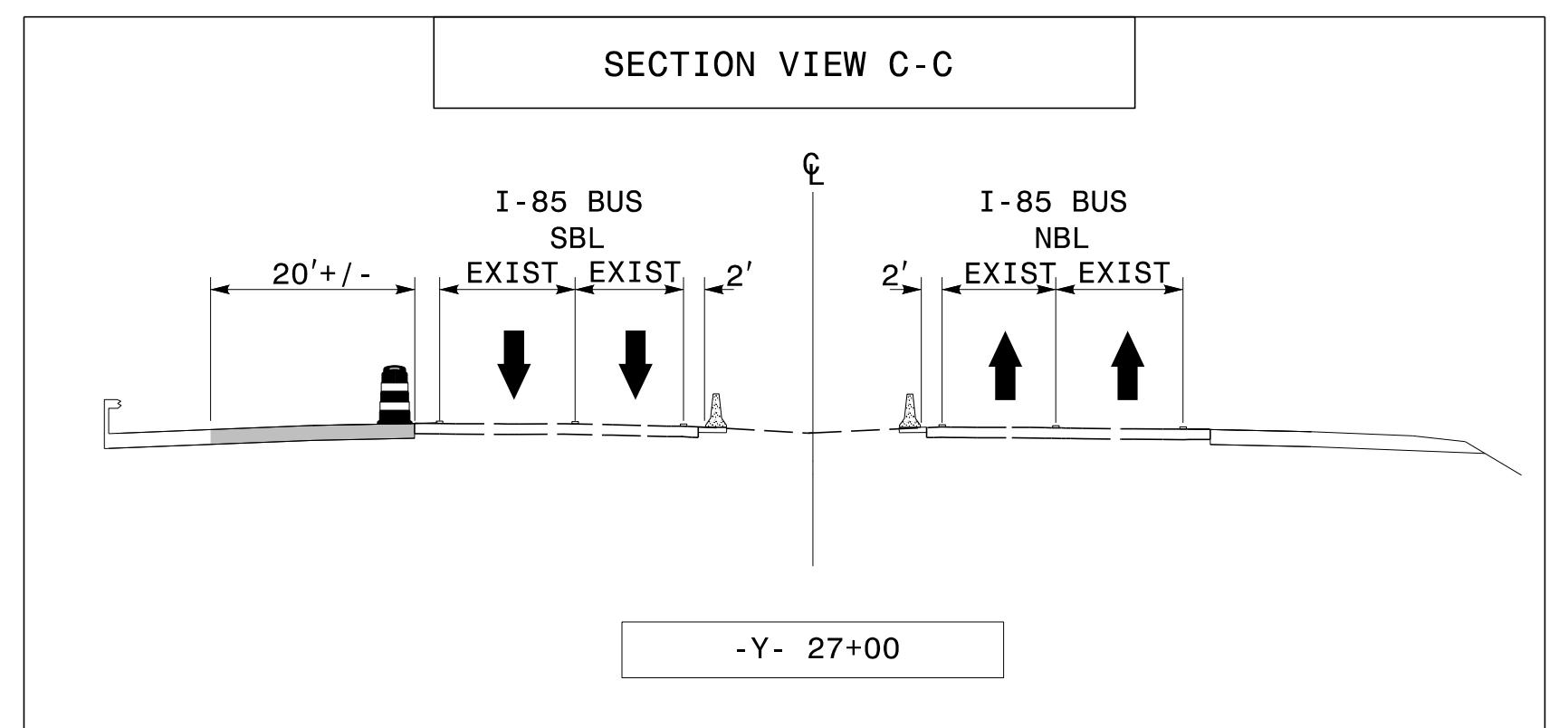
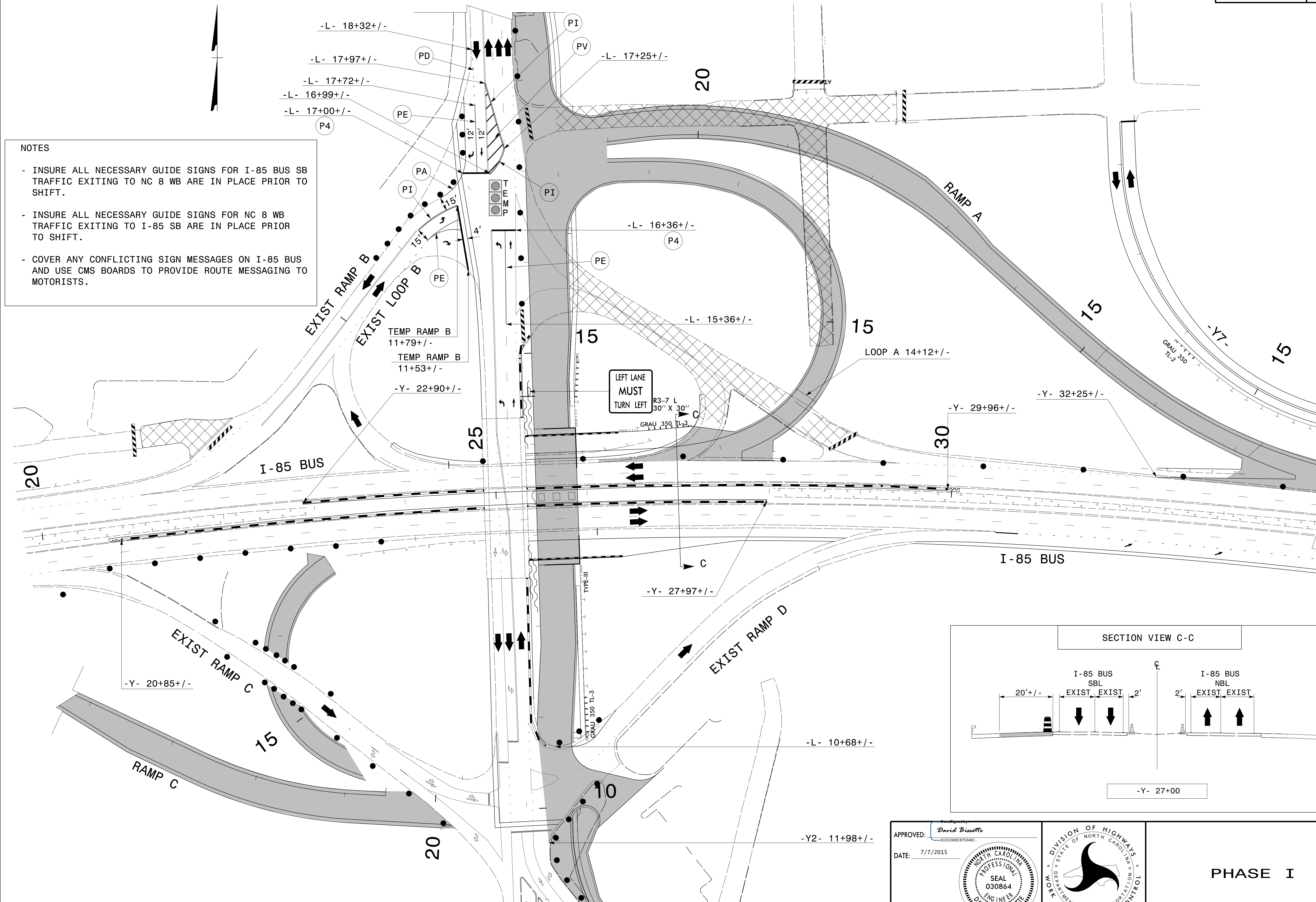
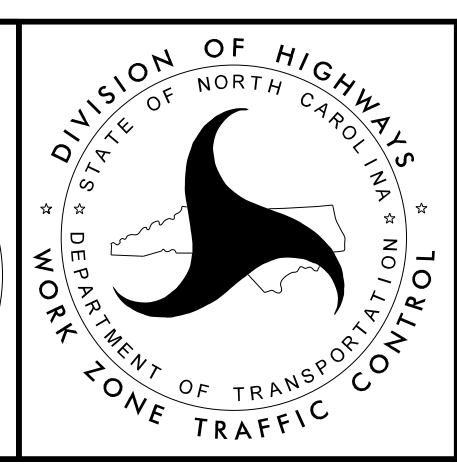
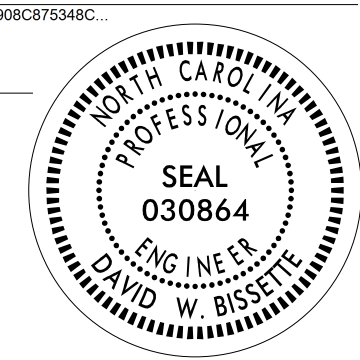


NOTES

- INSURE ALL NECESSARY GUIDE SIGNS FOR I-85 BUS SB TRAFFIC EXITING TO NC 8 WB ARE IN PLACE PRIOR TO SHIFT.
- INSURE ALL NECESSARY GUIDE SIGNS FOR NC 8 WB TRAFFIC EXITING TO I-85 SB ARE IN PLACE PRIOR TO SHIFT.
- COVER ANY CONFLICTING SIGN MESSAGES ON I-85 BUS AND USE CMS BOARDS TO PROVIDE ROUTE MESSAGING TO MOTORISTS.



APPROVED: *David Bisette*
 ECDCR/CRT/SAC
 DATE: 7/7/2015



PHASE I

7/7/2015
 R:\TIP\Projects-B\B3159\TrafficControl\TCP\B3159_TC_TMP10.dgn
 User: derichardson