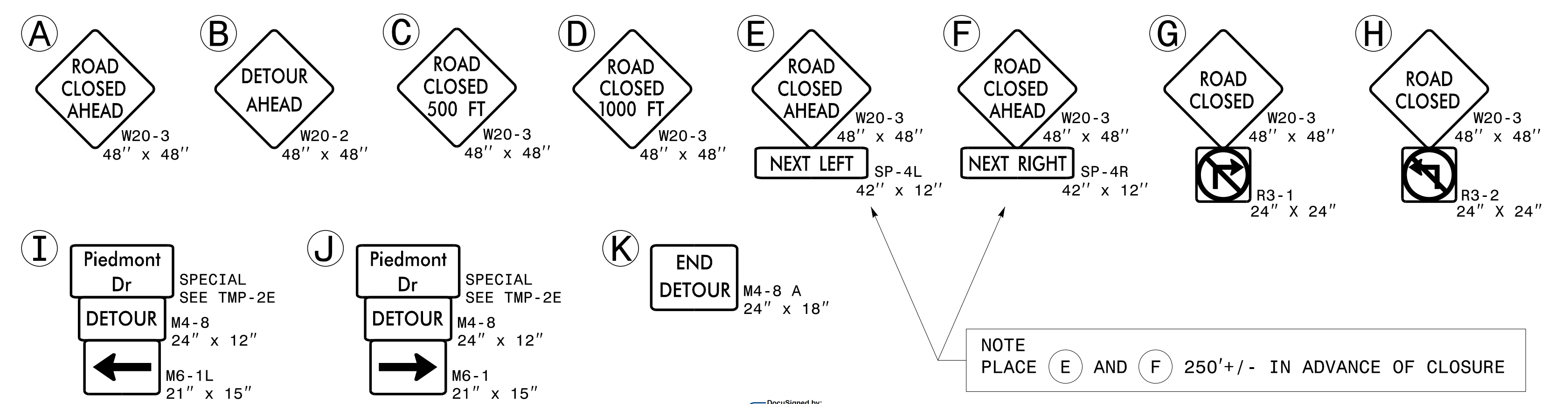
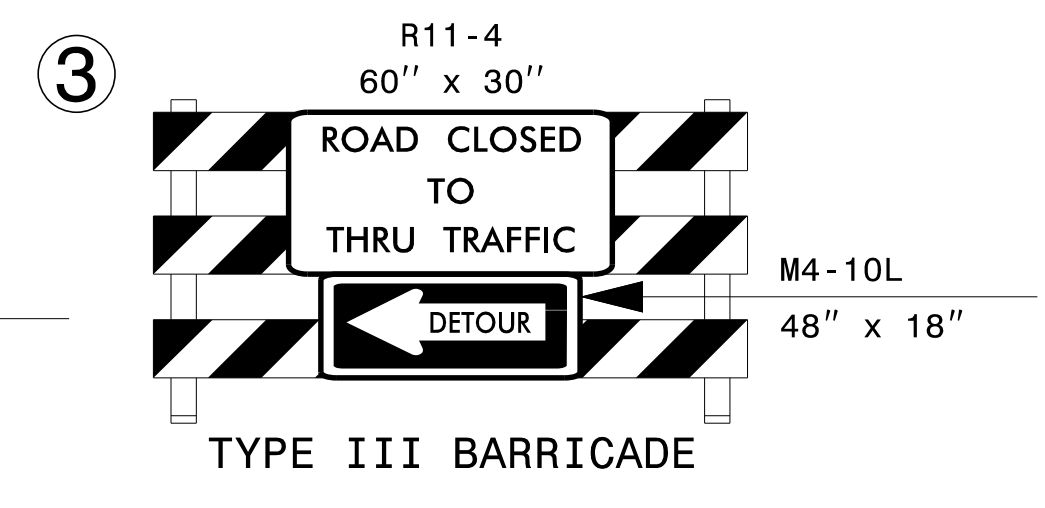
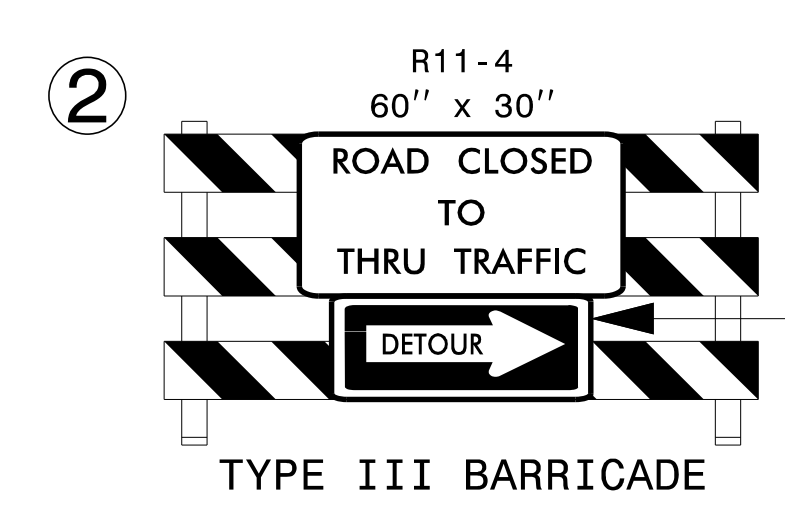
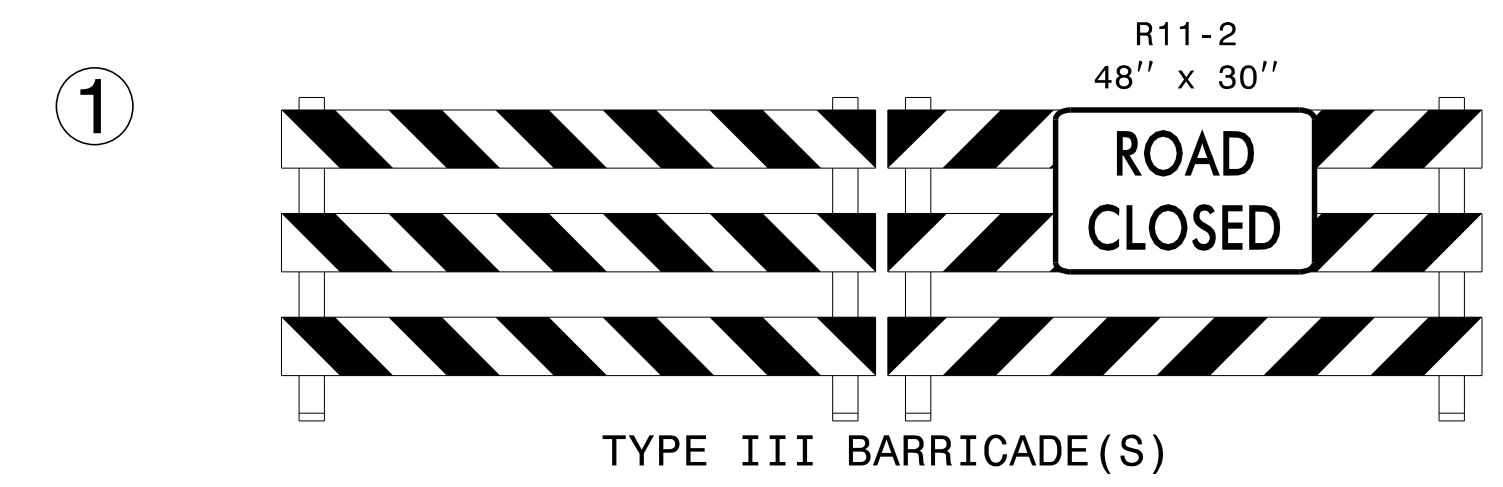
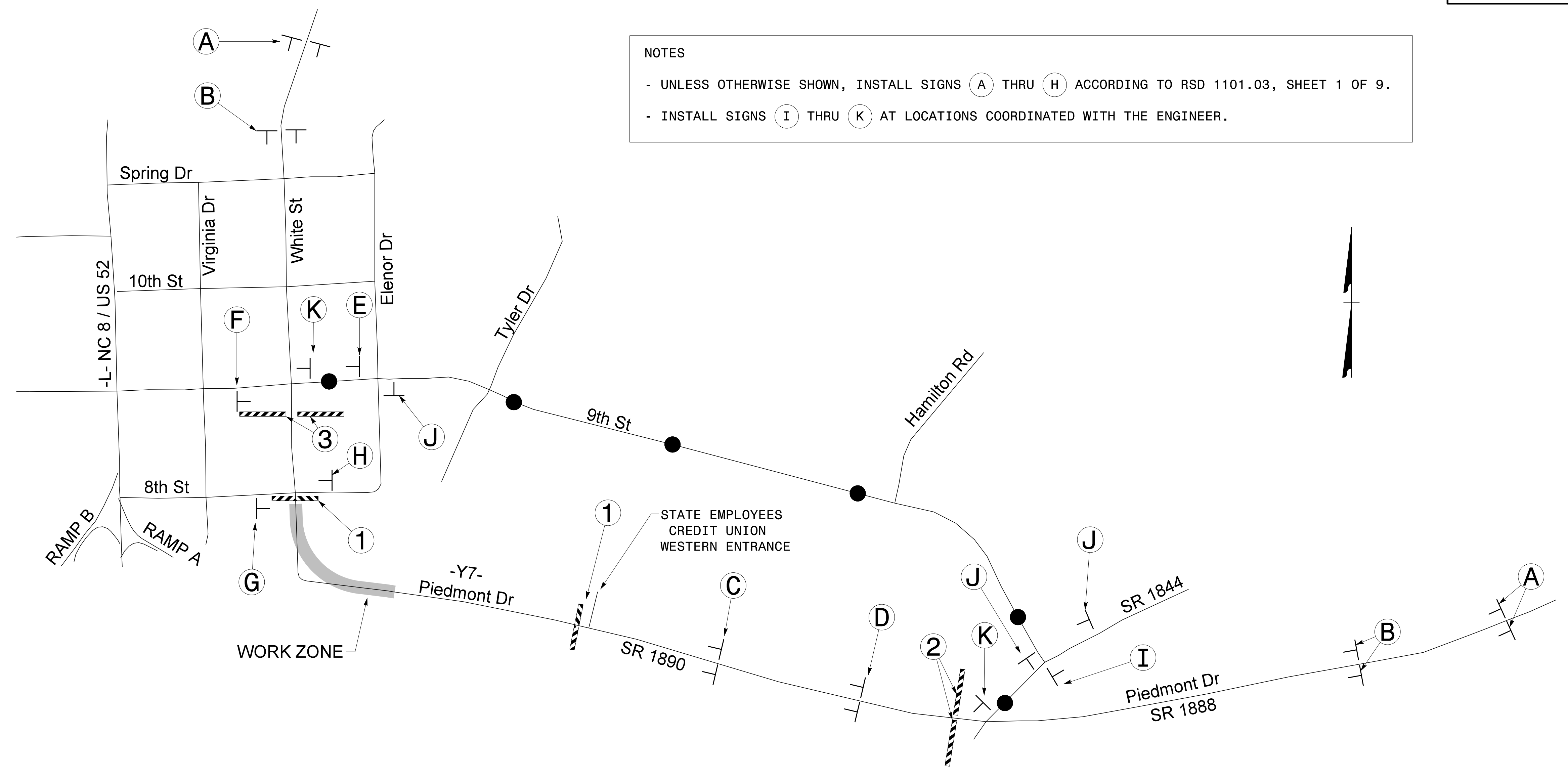


NOTES

- UNLESS OTHERWISE SHOWN, INSTALL SIGNS (A) THRU (H) ACCORDING TO RSD 1101.03, SHEET 1 OF 9.
- INSTALL SIGNS (I) THRU (K) AT LOCATIONS COORDINATED WITH THE ENGINEER.



APPROVED: *David Bisette* DATE: 7/7/2015

SEAL

SEAL 030864

PROFESSIONAL ENGINEER DAVID W. BISSETTE

DIVISION OF HIGHWAYS STATE OF NORTH CAROLINA DEPARTMENT OF TRANSPORTATION WORK ZONE TRAFFIC CONTROL

PIEDMONT DRIVE (Y7) DETOUR ROUTE

7/7/2015
 R:\TIP\Projects-B\B3159\TrafficControl\CPN\B3159_TC_TMP02C_Y7_DET.dgn
 User: drcardson