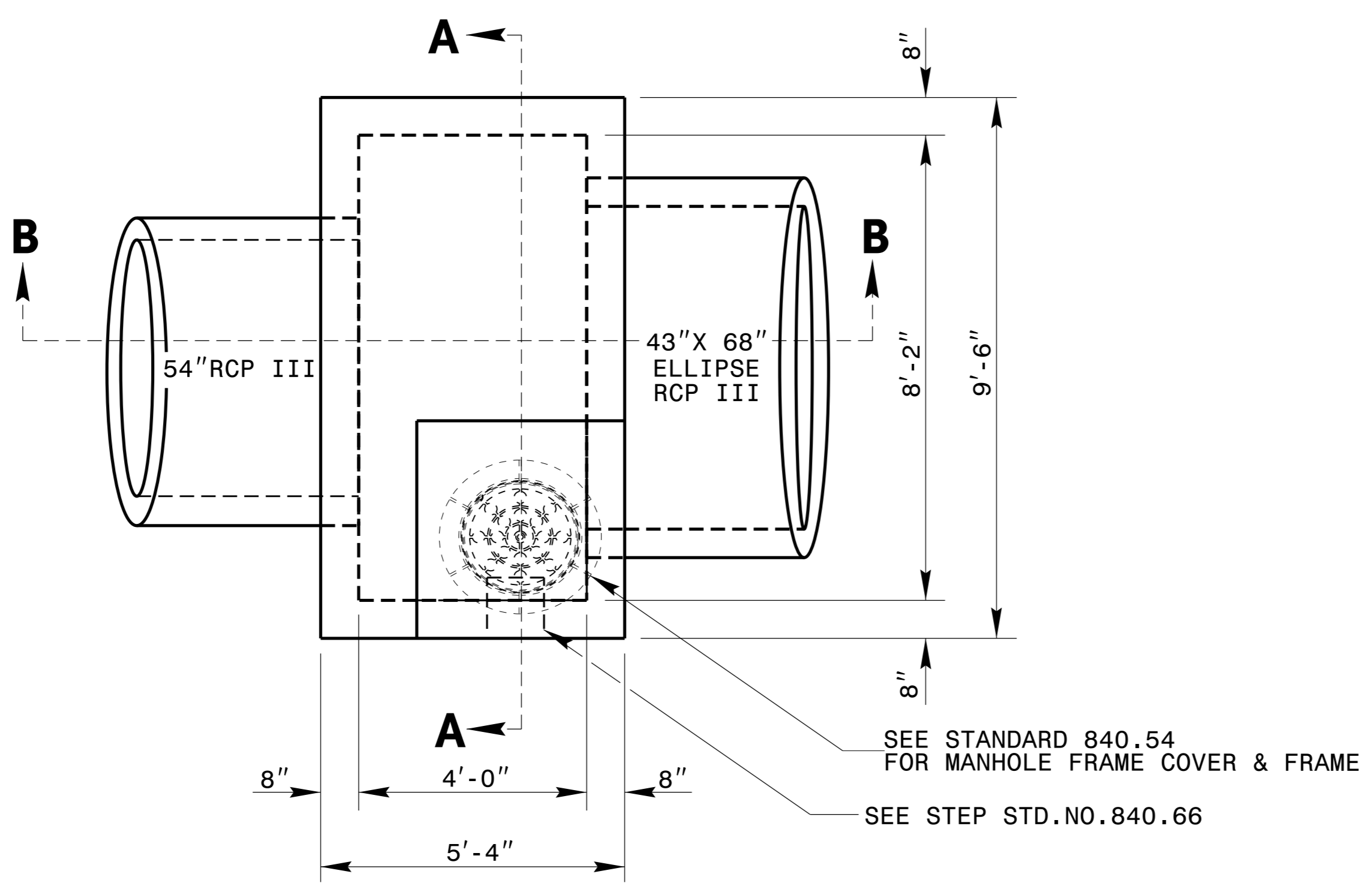
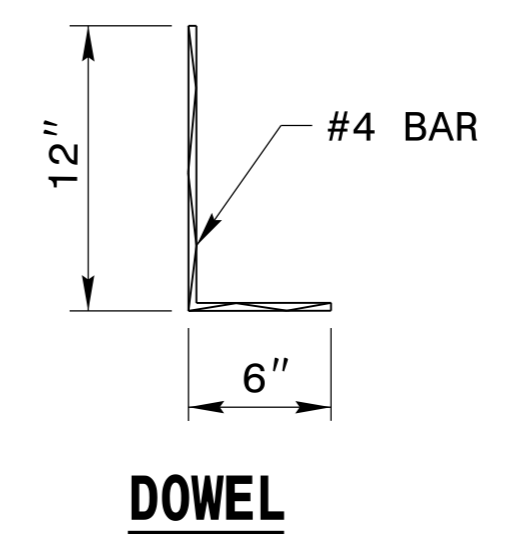


**GENERAL NOTES:**  
 USE CLASS "B" CONCRETE THROUGHOUT.  
 PROVIDE ALL JUNCTION BOXES OVER 3'-6" IN DEPTH WITH STEPS 12" ON CENTER. USE STEPS WHICH COMPLY WITH STD. DRAWING 840.66.  
 OPTIONAL CONSTRUCTION - MONOLITHIC POUR, 2" KEYWAY, OR #4 BAR DOWELS AT 12" CENTERS AS DIRECTED BY THE ENGINEER.  
 USE FORMS FOR THE CONSTRUCTION OF THE BOTTOM SLAB.  
 INSTALL MANHOLE IN POSITION AS DIRECTED BY THE ENGINEER. CUT AND BEND ALL REBAR CROSSING THIS OPENING TO ALLOW 2" MINIMUM CONCRETE COVERAGE.  
 CHAMFER ALL EXPOSED CORNERS 1".  
 2" MINIMUM CONCRETE COVERAGE ON ALL REBAR.  
 HEIGHT DIMENSIONS MAY BE ADJUSTED AS DIRECTED BY THE ENGINEER.



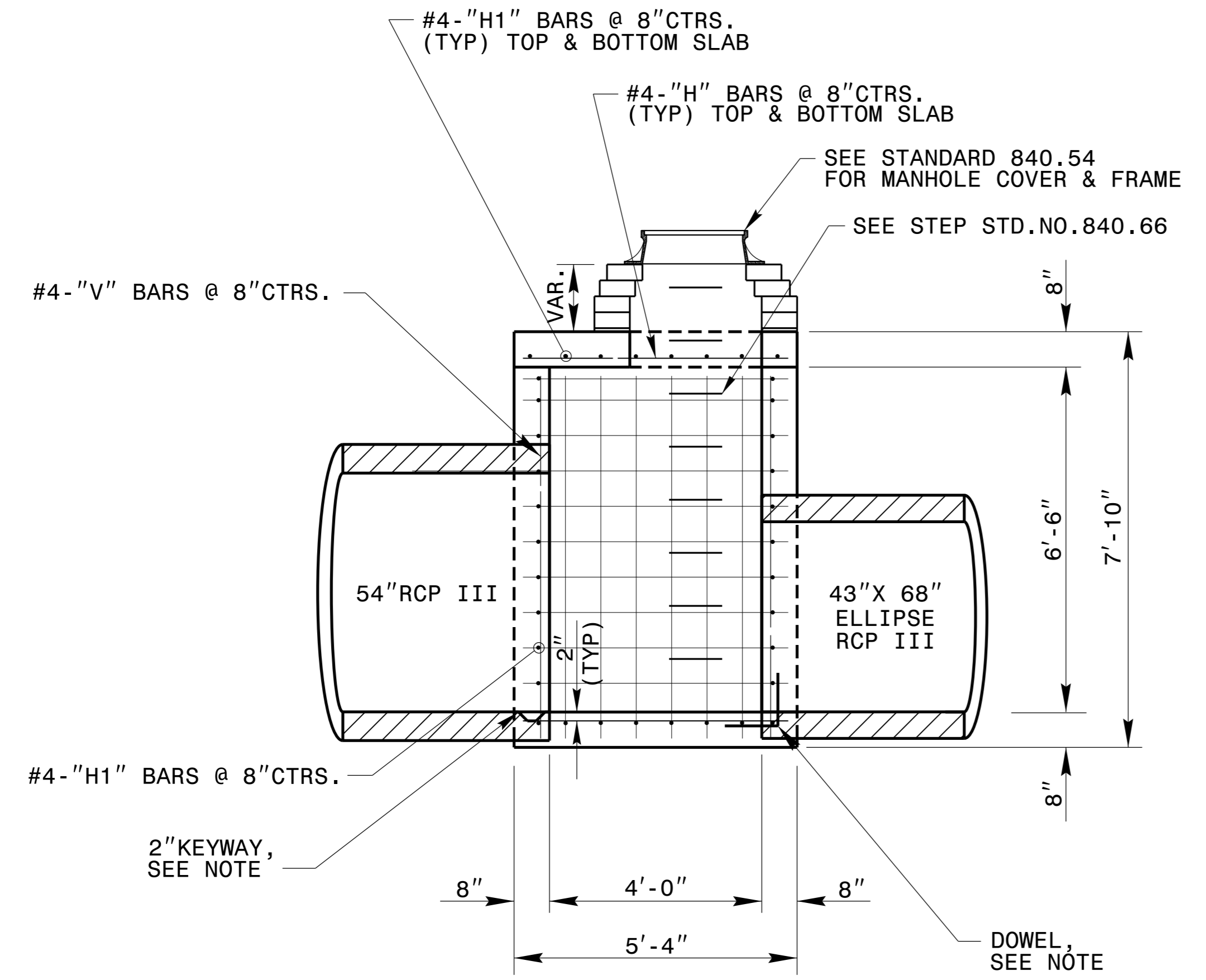
**PLAN VIEW**



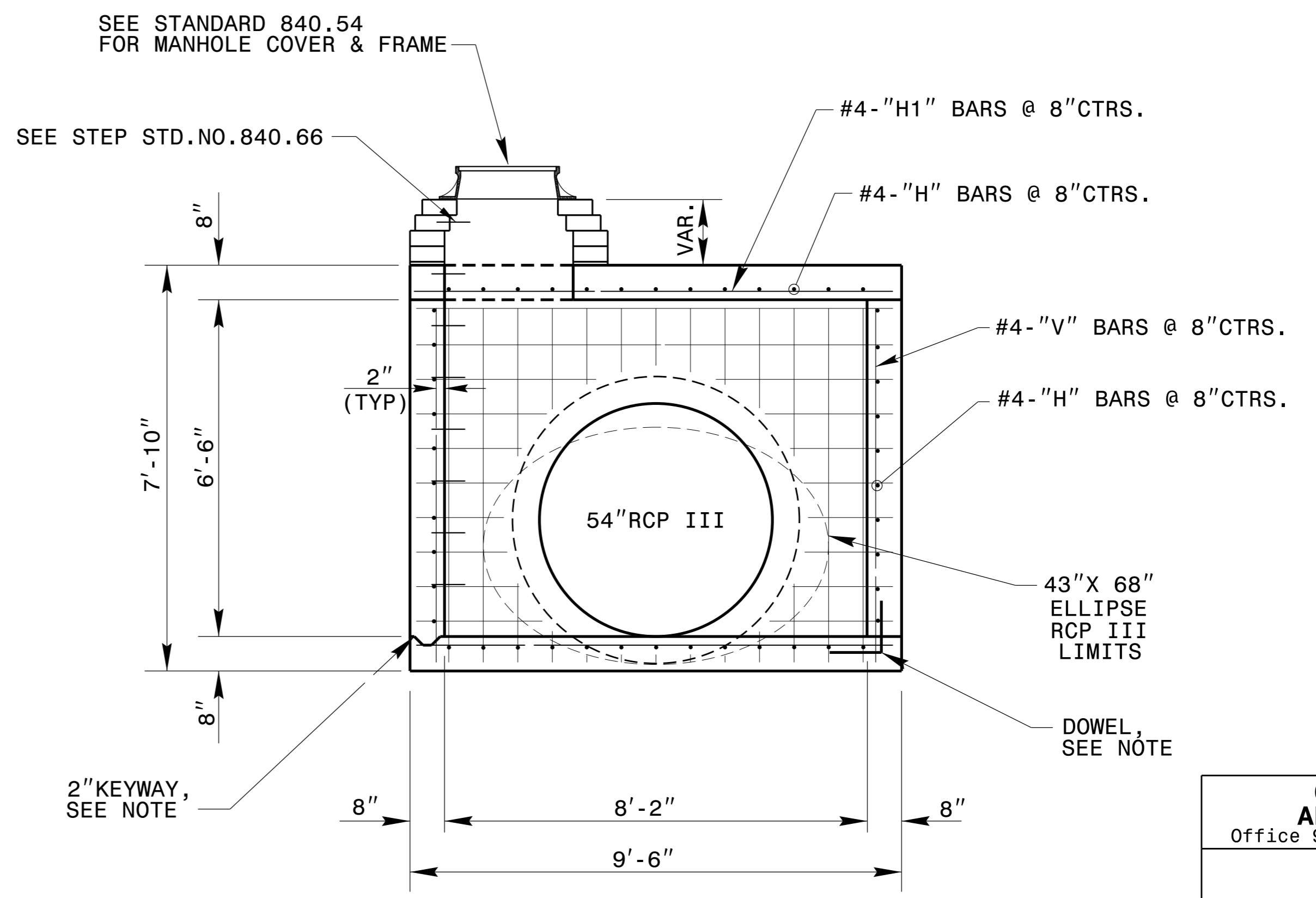
**DOWEL**

BILL OF MATERIAL				
BAR	NO.	SIZE	LENGTH	WEIGHT
H	46	#4	7'-0"	154
H1	36	#4	8'-0"	221
V	42	#4	6'-10"	192
TOTAL REINF. STEEL (LBS.)				567
CLASS "B" CONC. (CU.YDS.)				6.8
DEDUCTION FOR 54" RC PIPE III				-0.6
DEDUCTION FOR 43"X 68" ELLIPSE RCP III				-0.6
TOTAL CL."B" CONC. (CU.YDS.)				5.6

\* 0.30 CU. YD. PER FOOT OF RISER HEIGHT



**SECTION B-B**



**SECTION A-A**



DocuSigned by:  
 Joel Howerton  
 8/4/2015

**STRUCTURE #0602**  
**CONTRACT STANDARDS AND DEVELOPMENT UNIT**  
 Office 919-707-6950 FAX 919-250-4119

**SPECIAL JB**

ORIGINAL BY: nbritt DATE: 04/22/2008  
 MODIFIED BY: nbritt DATE: 07/30/2015  
 CHECKED BY: DATE:  
 FILE SPEC.: detail/nbritt/english/bridge/b3159\_54jb.dgn