

NOTES

A 1/2" EXPANSION JOINT SHALL BE LOCATED IN THE COPING AT THE CENTERLINE OF THE FIRST TYPE A4 OR A5 PILES ADJACENT TO W.P. #W1-12 IN WALL 1, #W2-1 IN WALL 2, #W3-9 IN WALL 3 AND #W4-1 IN WALL 4. ADDITIONAL 1/2" EXPANSION JOINTS SHALL BE LOCATED ALONG THE LENGTH OF THE COPING FOR EACH WALL AT 30'-0" MAXIMUM CENTERS. SEE "PLAN OF EXPANSION JOINTS IN COPING", SHEET 6 OF 11.

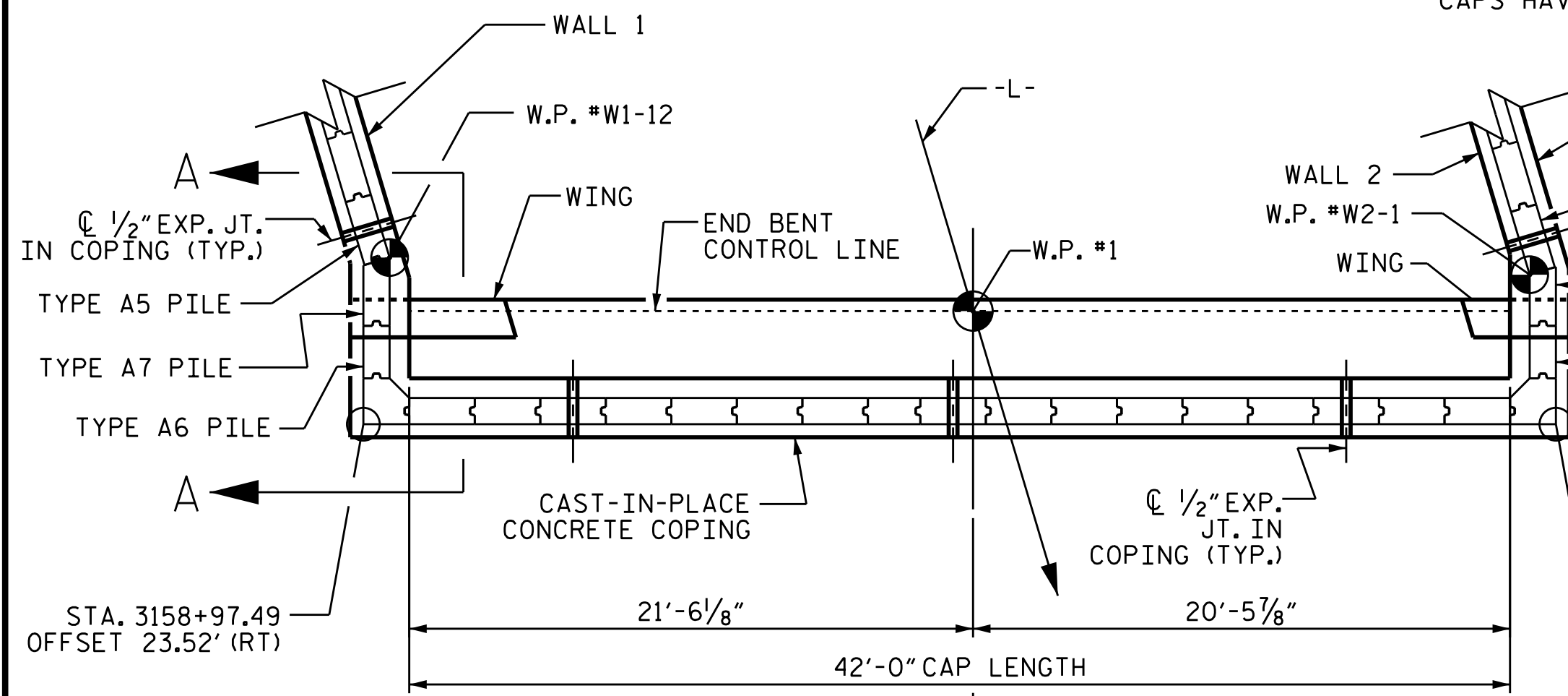
GROOVED CONTRACTION JOINTS, 1/2" IN DEPTH, SHALL BE TOOLED IN ALL EXPOSED FACES OF THE CONCRETE COPING AND IN ACCORDANCE WITH ARTICLE 825-10(B) OF THE STANDARD SPECIFICATIONS. A CONTRACTION JOINT SHALL BE LOCATED AT EACH THIRD POINT BETWEEN COPING EXPANSION JOINTS. ONLY ONE CONTRACTION JOINT IS REQUIRED AT MIDPOINT OF COPING SEGMENTS LESS THAN 20 FEET IN LENGTH AND NO CONTRACTION JOINTS ARE REQUIRED FOR THOSE SEGMENTS LESS THAN 10 FEET IN LENGTH.

THE PRESTRESSED CONCRETE SHEET PILES SHALL BE DRIVEN PRIOR TO PLACEMENT OF THE PRESTRESSED END BENT CAPS. THE CAST-IN-PLACE CONCRETE FOR THE COPING SHALL NOT BE POURED UNTIL THE END BENT CAPS HAVE BEEN PLACED.

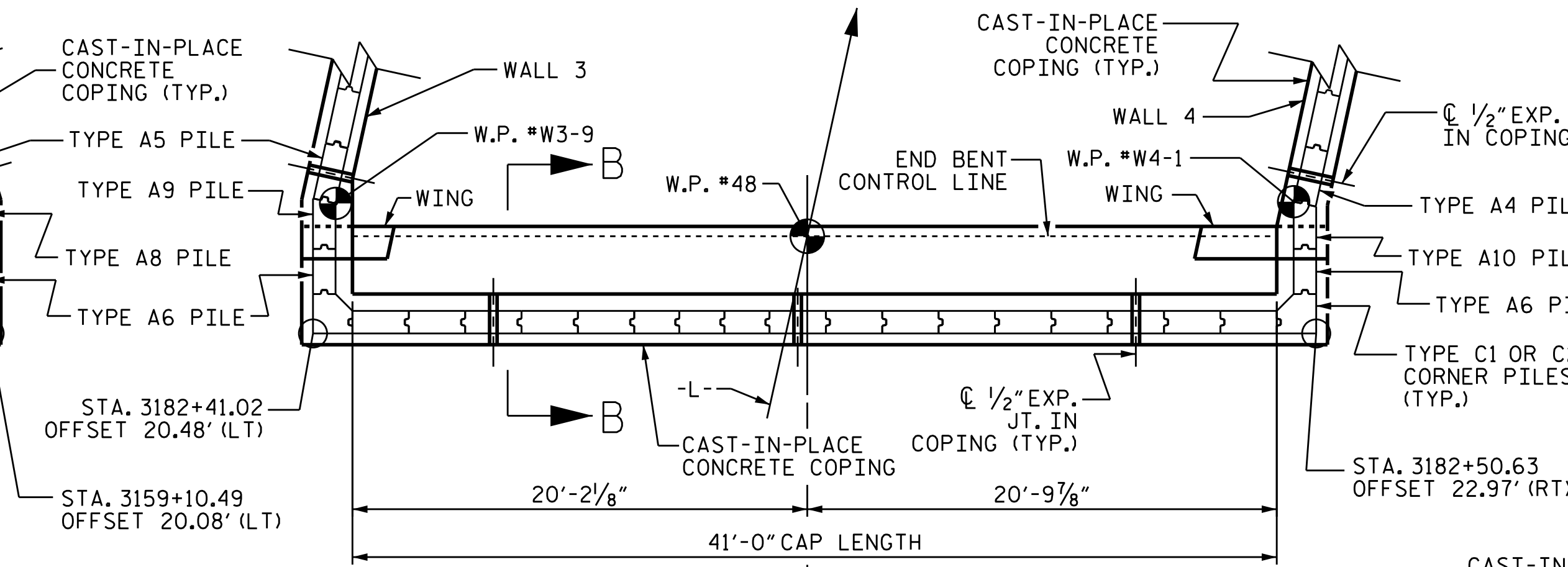
TWO LAYERS OF 30 LB. ROOFING FELT SHALL BE PROVIDED BETWEEN WINGS AND ADJACENT COPING TO PREVENT BONDING.

TWO LAYERS OF 30 LB. ROOFING FELT SHALL BE PROVIDED BETWEEN SIDES AND FRONT FACES OF END BENT CAPS AND ADJACENT COPING TO PREVENT BONDING.

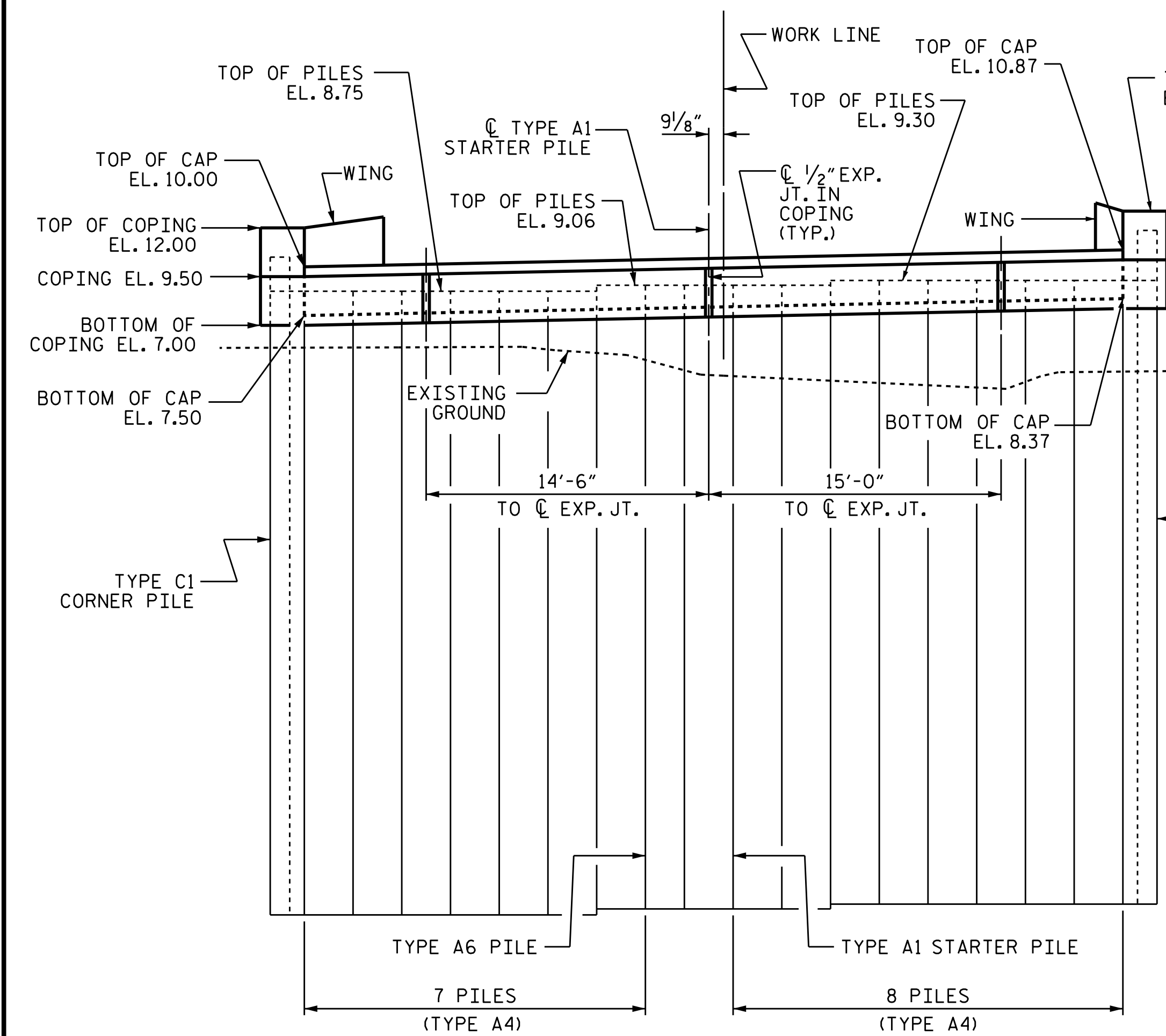
THE CONCRETE IN CAST-IN-PLACE END BENT WINGS SHALL BE CLASS AA CONCRETE IN ACCORDANCE WITH THE STANDARD SPECIFICATIONS. THE CONCRETE (APPROX. 1.4 CU. YDS.) SHALL BE CONSIDERED INCIDENTAL TO THE COST OF THE CONCRETE SHEET PILE WALL.



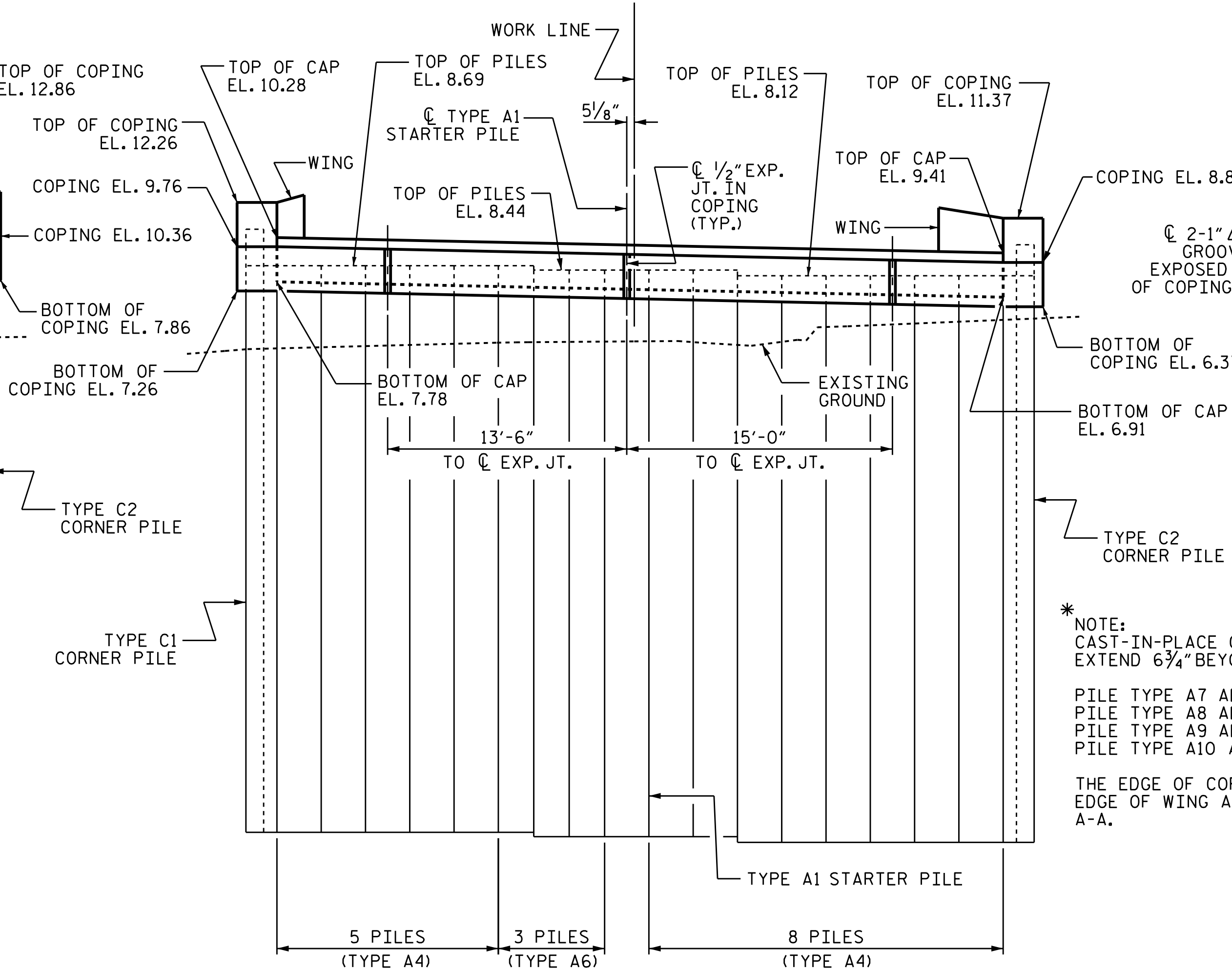
END BENT 1 PLAN



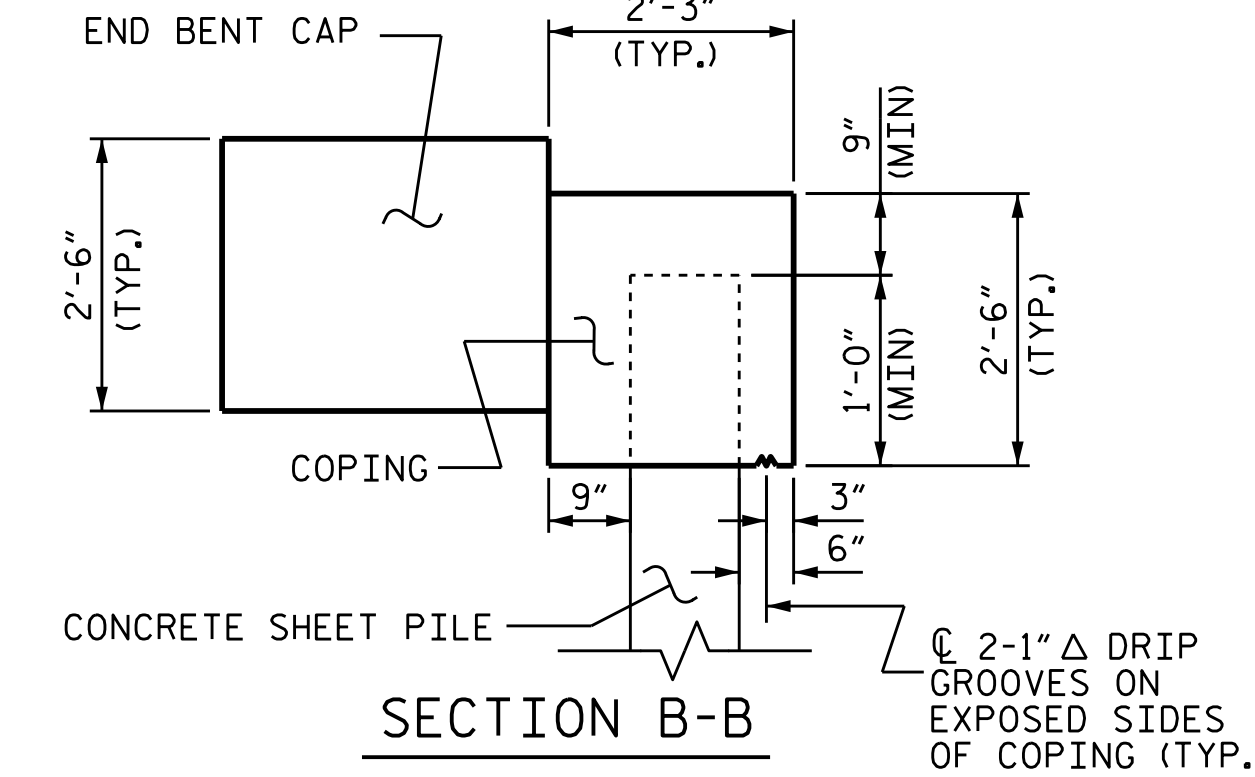
END BENT 2 PLAN



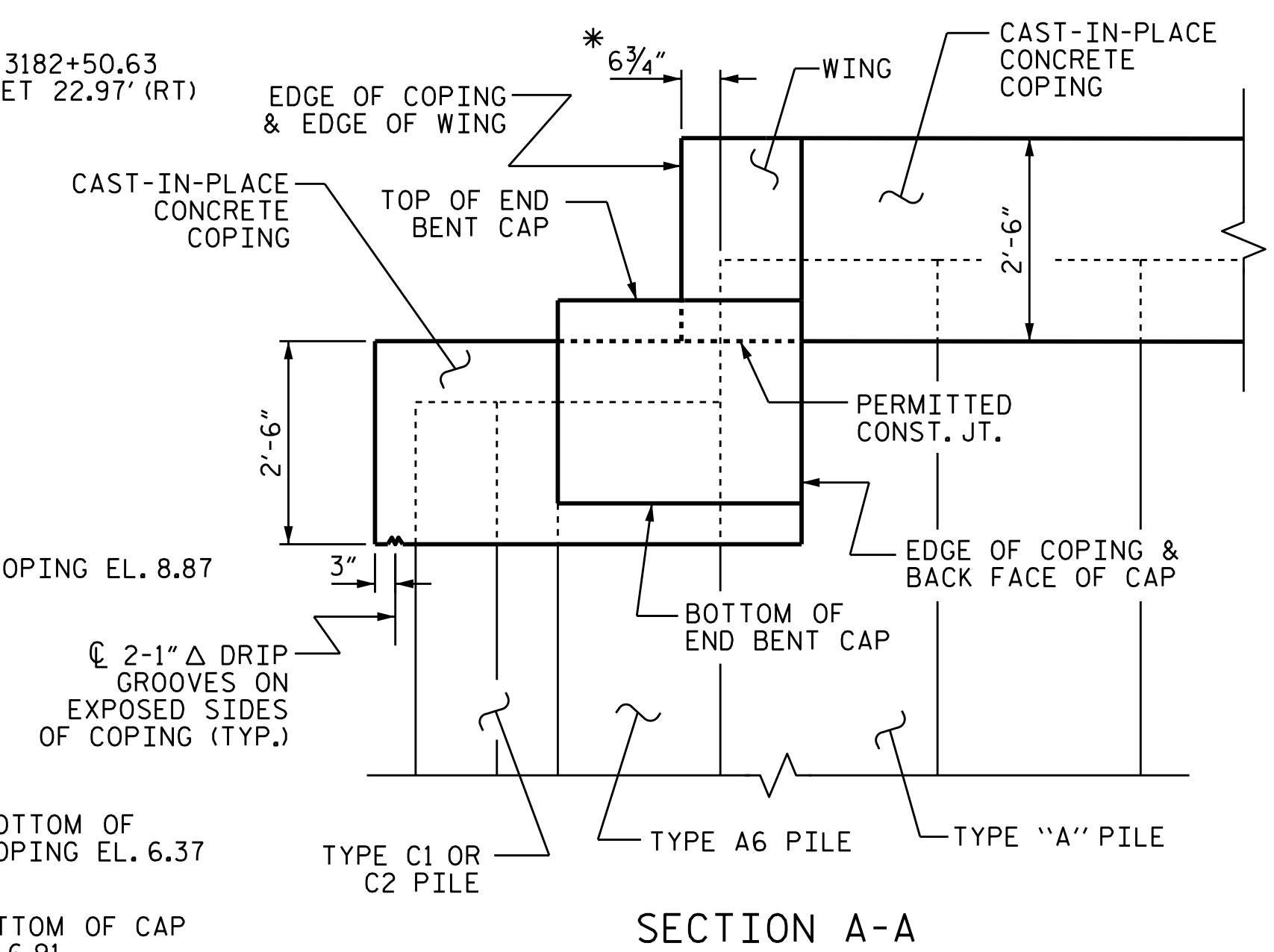
END BENT 1 ELEVATION
(LOOKING TOWARD FRONT FACE OF CAP)



END BENT 2 ELEVATION
(LOOKING TOWARD FRONT FACE OF CAP)



SECTION B-B



SECTION A-A

NOTE: SEE "CONCRETE SHEET PILE RETAINING WALL, SHEET PILE DETAILS", SHEETS 7 THRU 11 OF 11, FOR PILE TYPES.

* NOTE: CAST-IN-PLACE CONCRETE COPING SHALL EXTEND 6 3/4" BEYOND:

PILE TYPE A7 ADJACENT TO W.P. #W1-12, PILE TYPE A8 ADJACENT TO W.P. #W2-1, PILE TYPE A9 ADJACENT TO W.P. #W3-9, PILE TYPE A10 ADJACENT TO W.P. #W4-1.

THE EDGE OF COPING SHALL MATCH THE EDGE OF WING AS SHOWN IN SECTION A-A.

PROJECT NO. B-2500AB
DARE COUNTY
 STATION: 3170+75.00 -L-

SHEET 5 OF 11



STATE OF NORTH CAROLINA
 DEPARTMENT OF TRANSPORTATION
 RALEIGH
**CONCRETE SHEET PILE
 WALL AND COPING
 DETAILS AT END BENTS**

DRAWN BY: T. M. GARRISON, P.E. DATE: 6/15
 CHECKED BY: M. A. ALLEN DATE: 6/15
 DESIGN ENGINEER OF RECORD: T. M. GARRISON, P.E. DATE: 6/15

REVISIONS						SHEET NO.
NO.	BY:	DATE:	NO.	BY:	DATE:	W-5
1			3			TOTAL SHEETS
2			4			13