

**BILL OF MATERIAL
FOR ONE PIECE B-02**

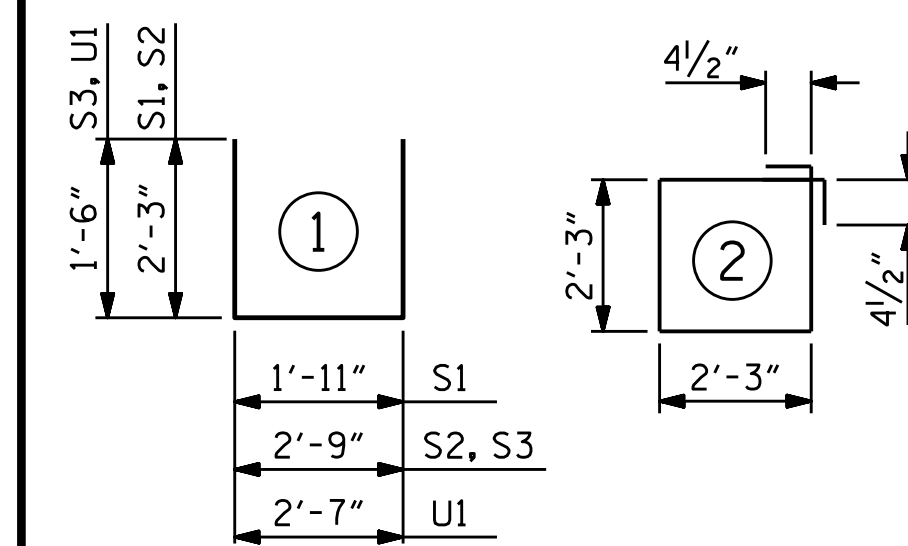
BAR	NO.	SIZE	TYPE	LENGTH	WEIGHT
B2	3	#4	STR	2'-8"	5
B3	6	#4	STR	9'-11"	40
D1	8	#6	STR	1'-6"	18
S1	8	#5	1	6'-5"	54
S2	8	#5	1	7'-3"	60
S3	8	#5	1	5'-9"	48
S4	6	#4	2	9'-9"	39
U1	6	#4	1	5'-7"	22

REINFORCING STEEL 286 LBS

4000 PSI PRESTRESS CONCRETE 2.5 C.Y.
PILE BLOCKOUT GROUT ▲ 0.2 C.Y.

0.6" Ø L.R. STRANDS No. 12

BAR TYPES



ALL BAR DIMENSIONS ARE OUT TO OUT.

▲ GROUT DISPLACED BY THE 16" PRESTRESSED CONCRETE PILES HAS BEEN DEDUCTED FROM THE GROUT QUANTITY.

GRADE 270 STRANDS

	0.6" Ø L.R.
AREA (SQUARE INCHES)	0.217
ULTIMATE STRENGTH (LBS. PER STRAND)	58,600
APPLIED PRESTRESS (LBS. PER STRAND)	43,950

PROJECT NO. B-2500AB
DARE COUNTY
STATION: 3170+75.00 -L-

SHEET 4 OF 7

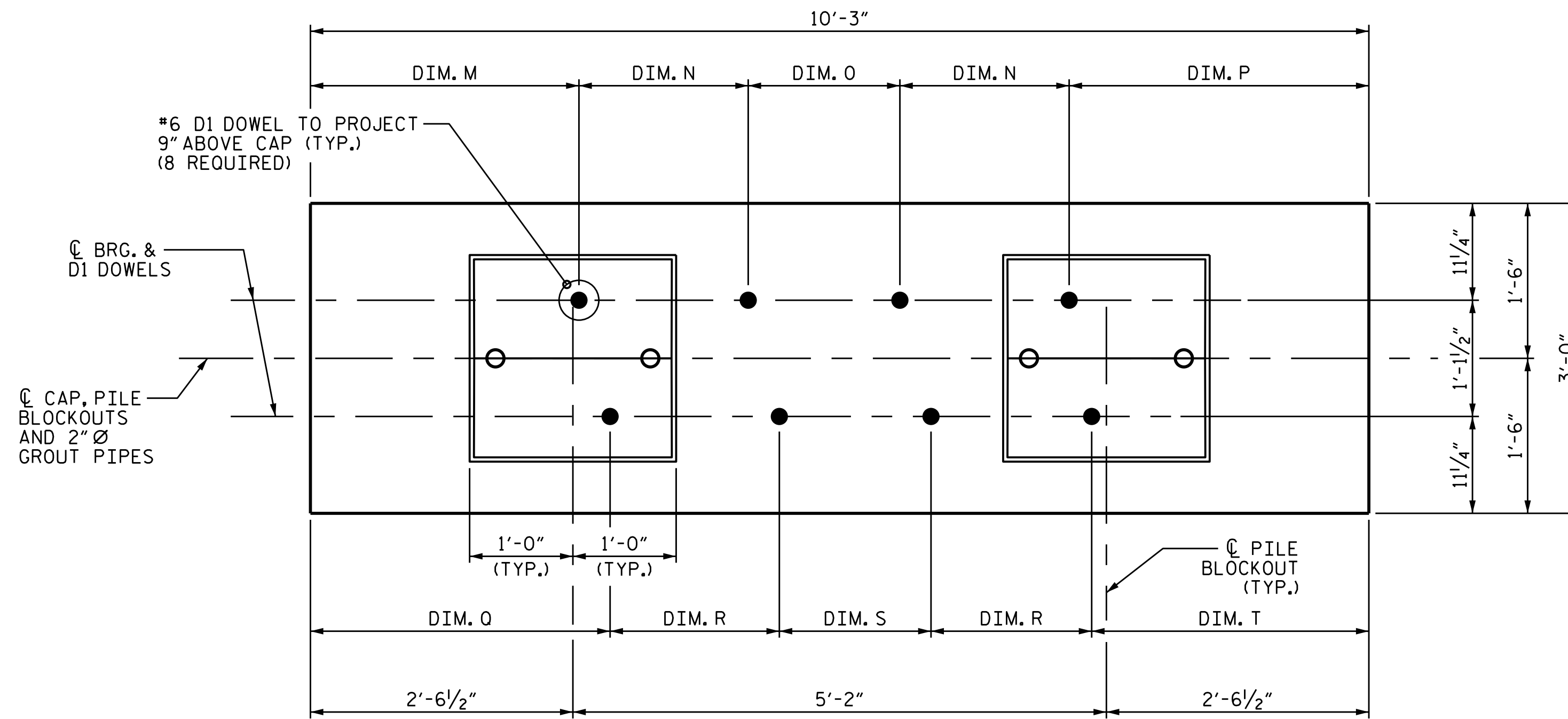
STATE OF NORTH CAROLINA
DEPARTMENT OF TRANSPORTATION
RALEIGH

SUBSTRUCTURE
BENTS 1 THRU 46
PRECAST
PIECE B-02

REVISIONS						SHEET NO.
NO.	BY:	DATE:	NO.	BY:	DATE:	TOTAL SHEETS
1			3			S-32
2			4			44

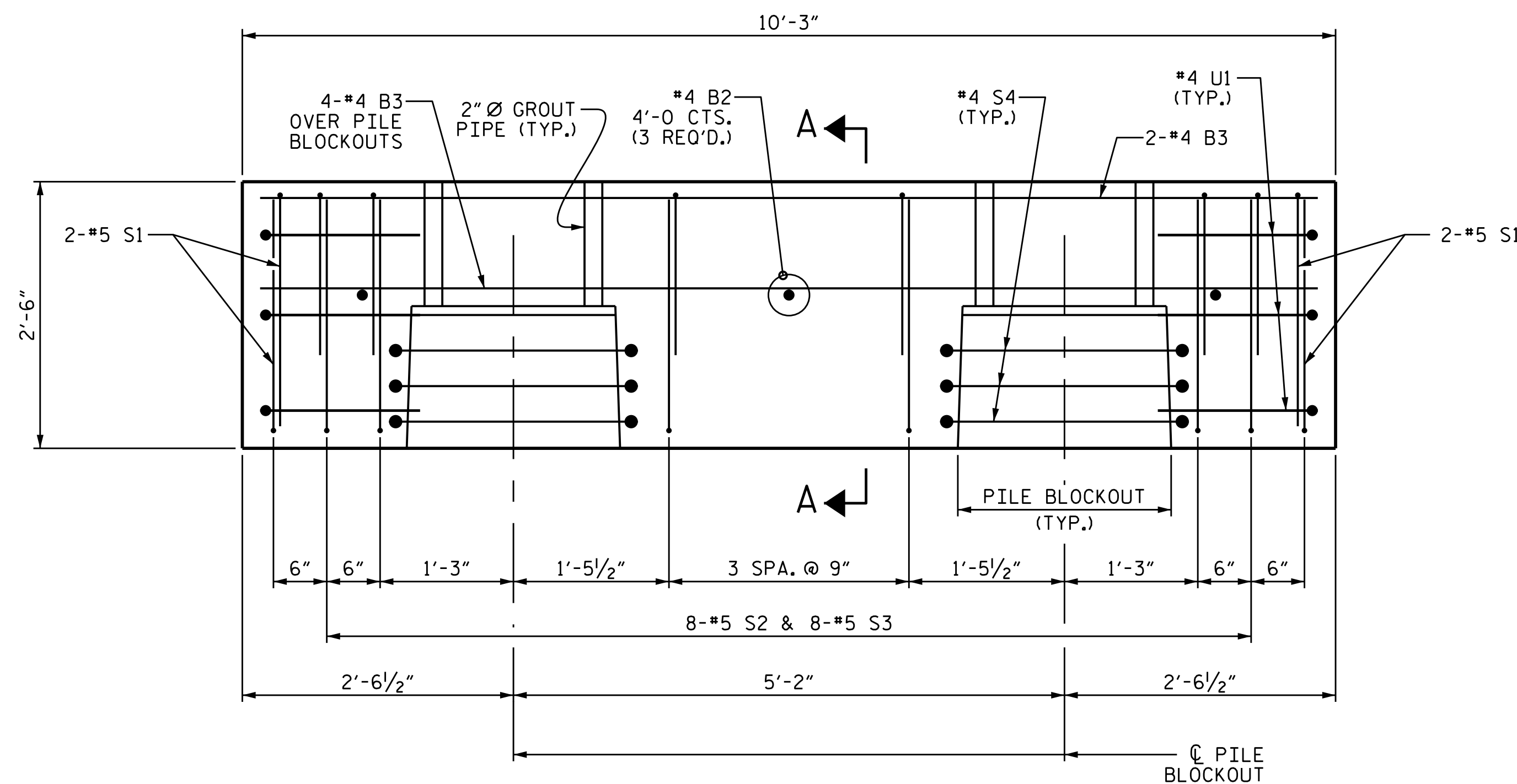


DocuSigned by:
Elizabeth K. Pope
F3A3E85D1C94E440
8/3/2015



PLAN

(FOR PILE BLOCKOUT DETAILS, SEE SHEET 7 OF 7)
(SEE SHEET 6 OF 7 FOR PIECE DESIGNATIONS FOR EACH BENT;
FOR EXAMPLE, THE SECOND PIECE FOR BENT 19 WILL BE DESIGNATED B19-02)
(FOR DOWEL DIMENSIONS, SEE SHEET 6 OF 7)



ELEVATION

(*#6 D1 DOWELS NOT SHOWN FOR CLARITY)
FOR SECTION A-A, SEE SHEET 7 OF 7.

ASSEMBLED BY : E. K. POPE, P.E.	DATE : 6/15
CHECKED BY : T. M. GARRISON, P.E.	DATE : 6/15
DRAWN BY : MAA 7/12	
CHECKED BY : SHS 8/12	