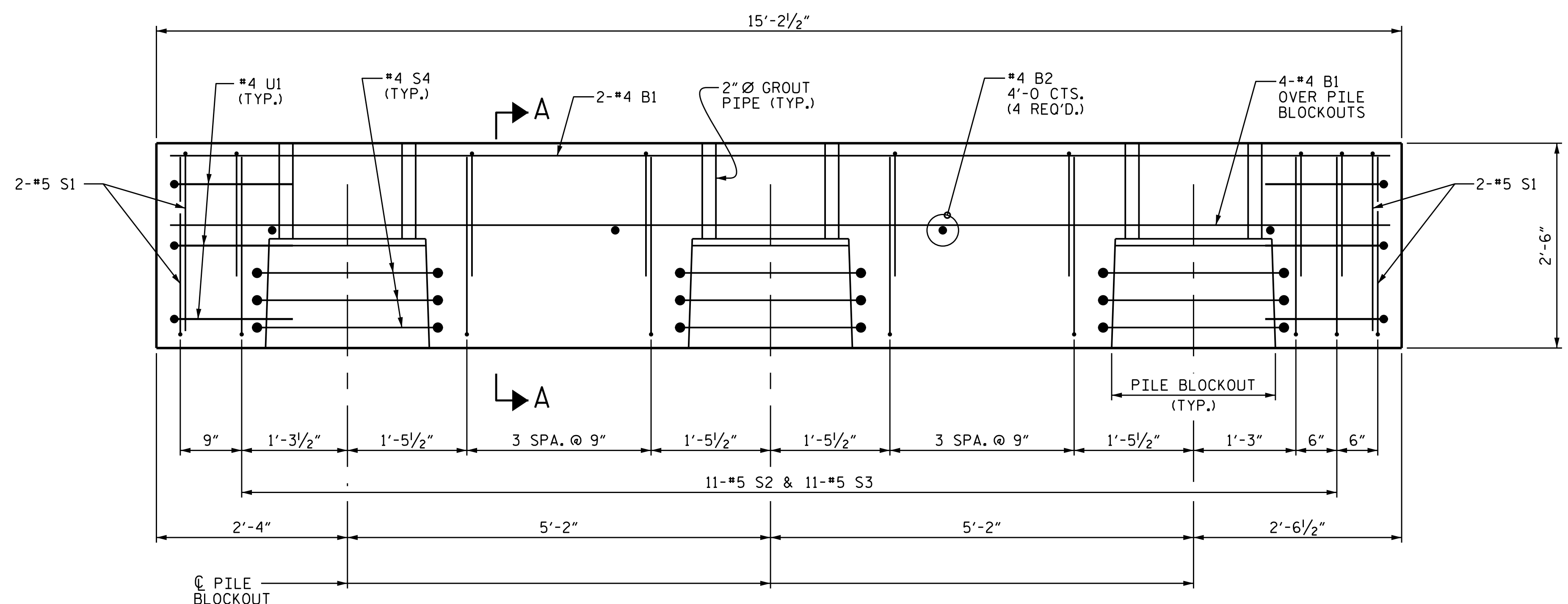
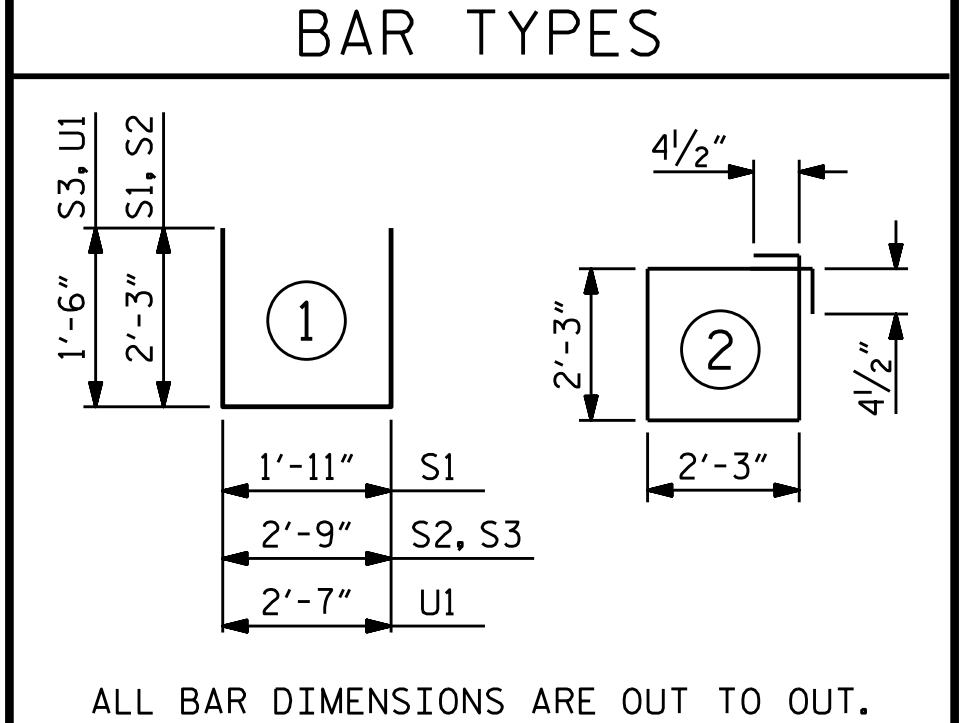


PLAN
 (FOR PILE BLOCKOUT DETAILS, SEE SHEET 7 OF 7)
 (SEE SHEET 6 OF 7 FOR PIECE DESIGNATIONS FOR EACH BENT;
 FOR EXAMPLE, THE SECOND PIECE FOR BENT 19 WILL BE DESIGNATED B19-02)
 (FOR DOWEL DIMENSIONS, SEE SHEET 6 OF 7)



ELEVATION
 (*6 D1 DOWELS NOT SHOWN FOR CLARITY)
 FOR SECTION A-A, SEE SHEET 7 OF 7.

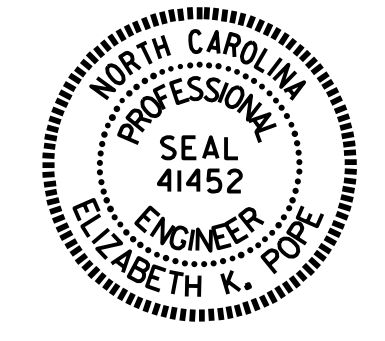
BILL OF MATERIAL					
FOR ONE PIECE B-01					
BAR	NO.	SIZE	TYPE	LENGTH	WEIGHT
B1	6	#4	STR	14'-10"	59
B2	4	#4	STR	2'-8"	7
D1	16	#6	STR	1'-6"	36
S1	8	#5	1	6'-5"	54
S2	11	#5	1	7'-3"	83
S3	11	#5	1	5'-9"	66
S4	9	#4	2	9'-9"	59
U1	6	#4	1	5'-7"	22
REINFORCING STEEL					386 LBS
4000 PSI PRESTRESS CONCRETE					3.7 C.Y.
PILE BLOCKOUT GROUT ▲					0.4 C.Y.
0.6" Ø L.R. STRANDS					No. 12



▲ GROUT DISPLACED BY THE 16" PRESTRESSED CONCRETE PILES HAS BEEN DEDUCTED FROM THE GROUT QUANTITY.

GRADE 270 STRANDS	
	0.6" Ø L.R.
AREA (SQUARE INCHES)	0.217
ULTIMATE STRENGTH (LBS. PER STRAND)	58,600
APPLIED PRESTRESS (LBS. PER STRAND)	43,950

PROJECT NO. B-2500AB
DARE COUNTY
 STATION: 3170+75.00 -L-
 SHEET 3 OF 7



STATE OF NORTH CAROLINA
 DEPARTMENT OF TRANSPORTATION
 RALEIGH

SUBSTRUCTURE
 BENTS 1 THRU 46
 PRECAST
 PIECE B-01

REVISIONS						SHEET NO.
NO.	BY:	DATE:	NO.	BY:	DATE:	S-31
1			3			TOTAL SHEETS 44
2			4			

ASSEMBLED BY : E. K. POPE, P.E. DATE : 6/15
 CHECKED BY : T. M. GARRISON, P.E. DATE : 6/15
 DRAWN BY : MAA 7/12
 CHECKED BY : SHS 8/12