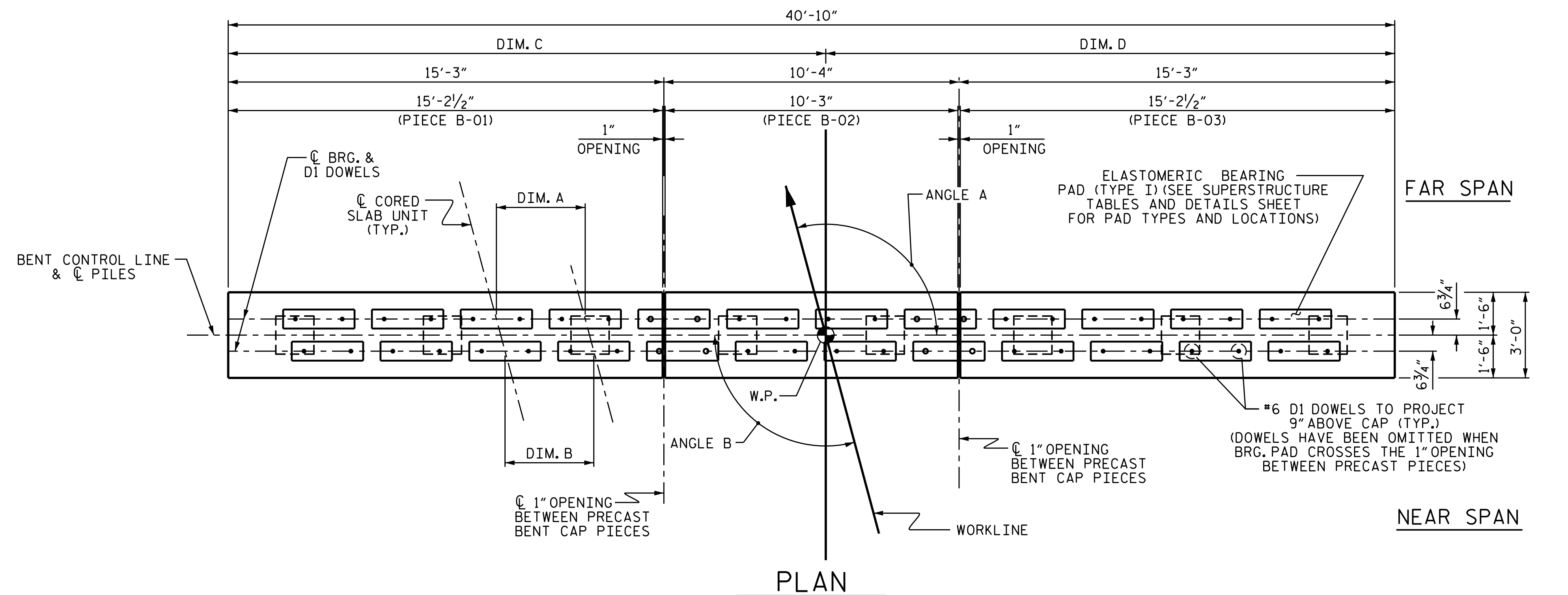


NOTES

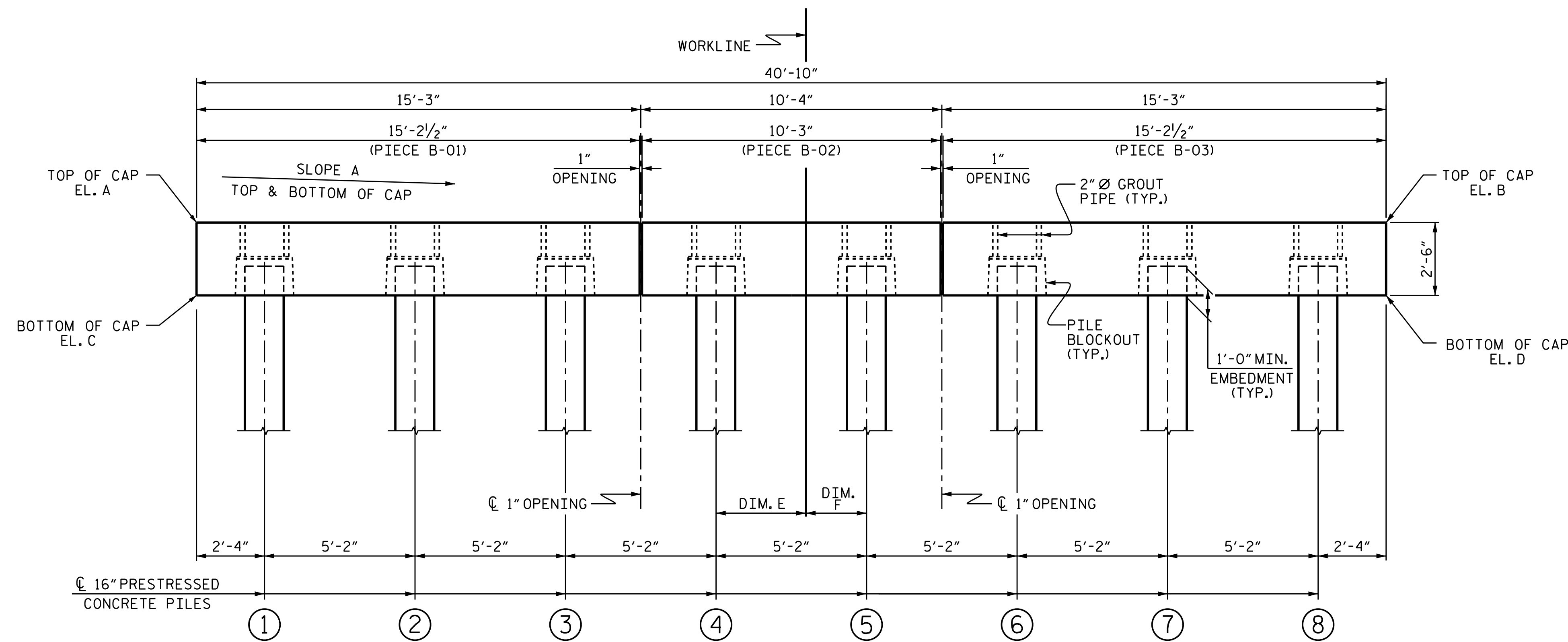
FOR PRECAST CAP DETAILS AND BILL OF MATERIAL, SEE "PIECE B-01", "PIECE B-02", & "PIECE B-03" SHEETS.

FOR GROUT FOR STRUCTURES, SEE SPECIAL PROVISIONS.

FOR 3'-0" x 2'-6" PRESTRESSED CONCRETE BENT CAPS, SEE SPECIAL PROVISIONS.



PLAN
 (PILE BLOCKOUTS AND GROUT PIPES NOT SHOWN FOR CLARITY)
 (SEE SHEET 6 OF 7 FOR PIECE DESIGNATIONS FOR EACH BENT;
 FOR EXAMPLE, THE SECOND PIECE FOR BENT 19 WILL BE DESIGNATED B19-02)
 (FOR DOWEL DIMENSIONS, SEE SHEET 6 OF 7)
 (FOR CAP DIMENSIONS, SEE SHEET 2 OF 7)



ELEVATION
 FOR 2" Ø GROUT PIPE AND PILE BLOCKOUT DETAILS, SEE SHEET 7 OF 7
 FOR CAP DIMENSIONS AND TOP OF PILE ELEVATIONS SEE SHEET 2 OF 7

PROJECT NO. B-2500AB
DARE COUNTY
 STATION: 3170+75.00 -L-

SHEET 1 OF 7



STATE OF NORTH CAROLINA
 DEPARTMENT OF TRANSPORTATION
 RALEIGH

SUBSTRUCTURE
 BENTS 1 THRU 46

ASSEMBLED BY : E. K. POPE, P.E.	DATE : 6/15
CHECKED BY : T. M. GARRISON, P.E.	DATE : 6/15
DRAWN BY : MAA 7/12	
CHECKED BY : SHS 8/12	

DocuSigned by:
 Elizabeth K. Pope
 8/3/2015

REVISIONS						SHEET NO.
NO.	BY:	DATE:	NO.	BY:	DATE:	TOTAL SHEETS
1			3			44
2			4			