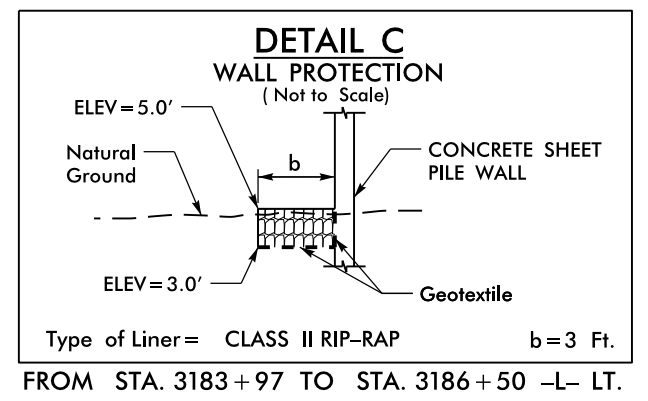
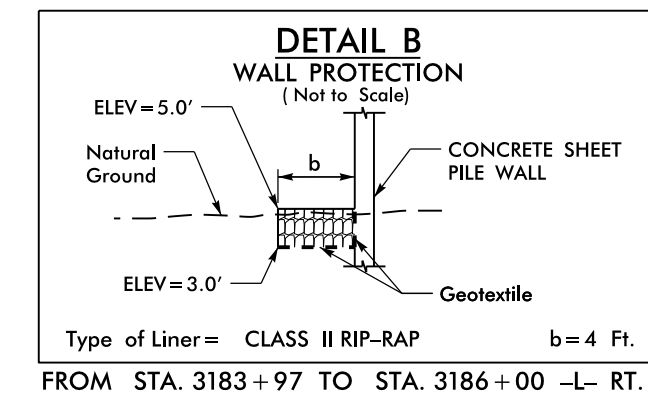
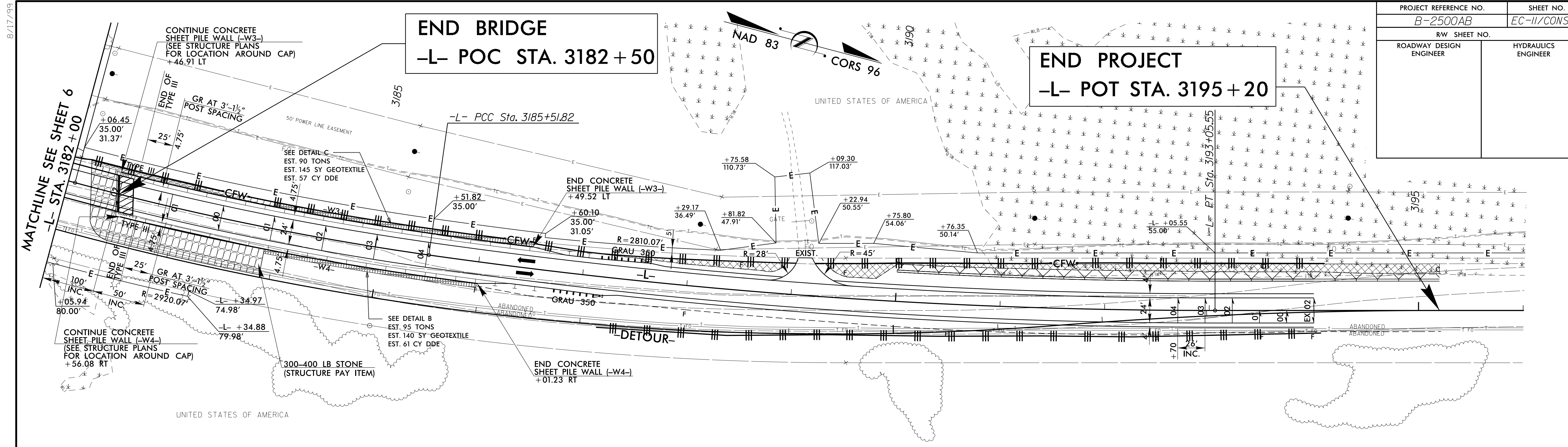


PROJECT REFERENCE NO. B-2500AB	SHEET NO. EC-II/CONST.7
RW SHEET NO.	
ROADWAY DESIGN ENGINEER	HYDRAULICS ENGINEER



PI Sta 3183+79.35 $\Delta = 6' 58'' 03.6''$ (LT) $D = 2' 01'' 02.8''$ $L = 345.37'$ $T = 172.90'$ $R = 2,840.00'$ $SE = .04$	PI Sta 3189+29.31 $\Delta = 8' 04'' 19.6''$ (LT) $D = 1' 04'' 15.4''$ $L = 753.73'$ $T = 377.49'$ $R = 5,350.00'$ $SE = .04$
--	--

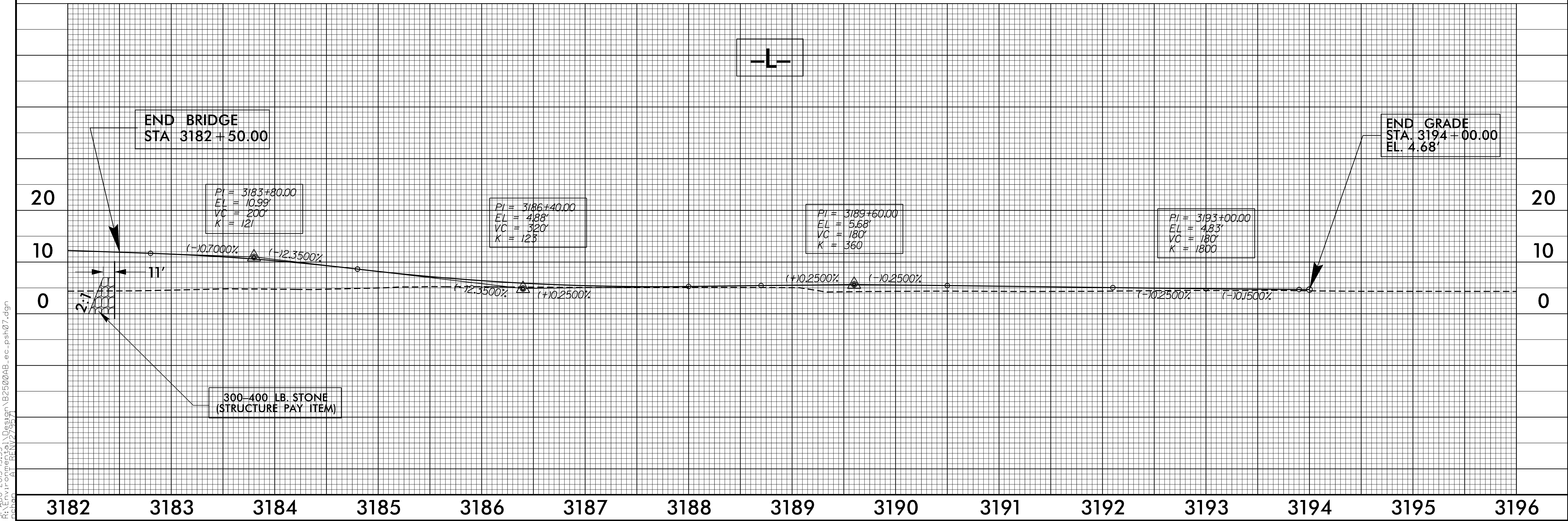
SEE SHEETS 2B-7 TO 2B-10 FOR DETOUR DESIGN

SEE SHEETS 2B-11 TO 2B-12 FOR NC-12 PAVEMENT REPAIR

SEE SHEET 2B-1 FOR ROADWAY & BRIDGE RELATIONSHIP

SEE SHEETS W-1 TO W-13 FOR WALL DETAILS

SEE SHEETS S-1 TO S-44 FOR STRUCTURE PLANS



8/17/99  
 21-AUG-2015 15:53  
 C:\enviro\p\p\B2500AB.ec.psh07.dgn