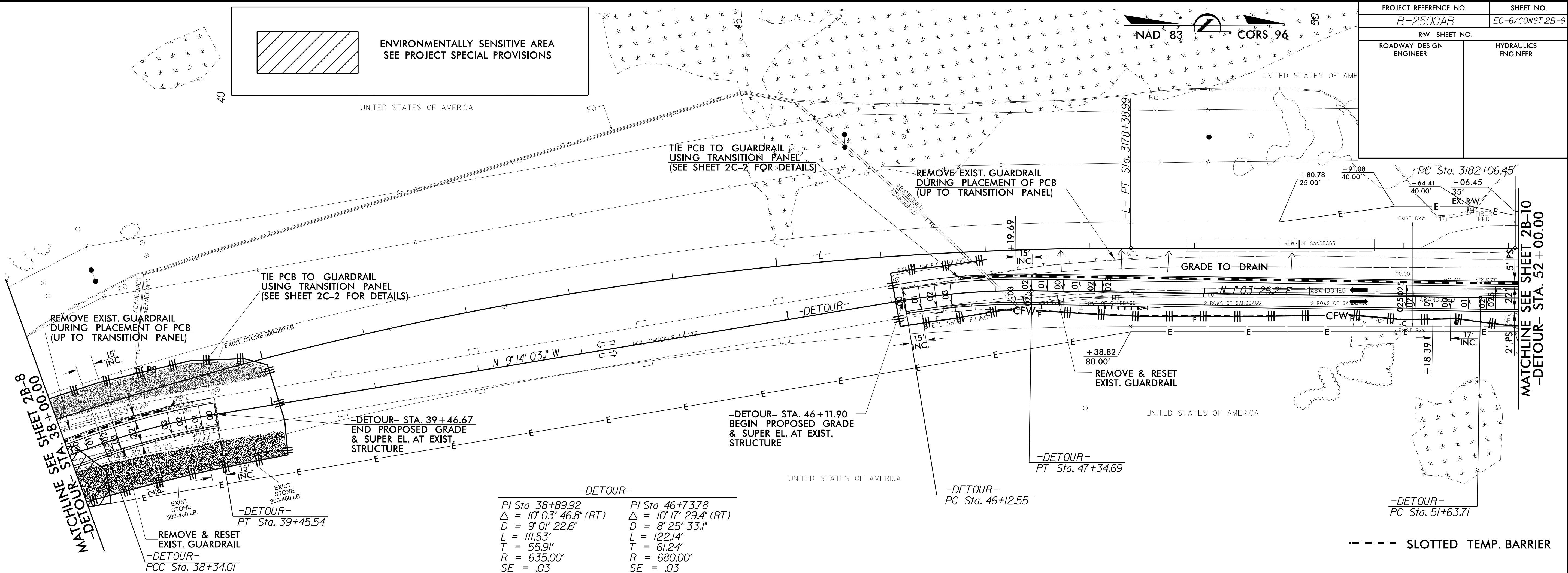


8/17/99

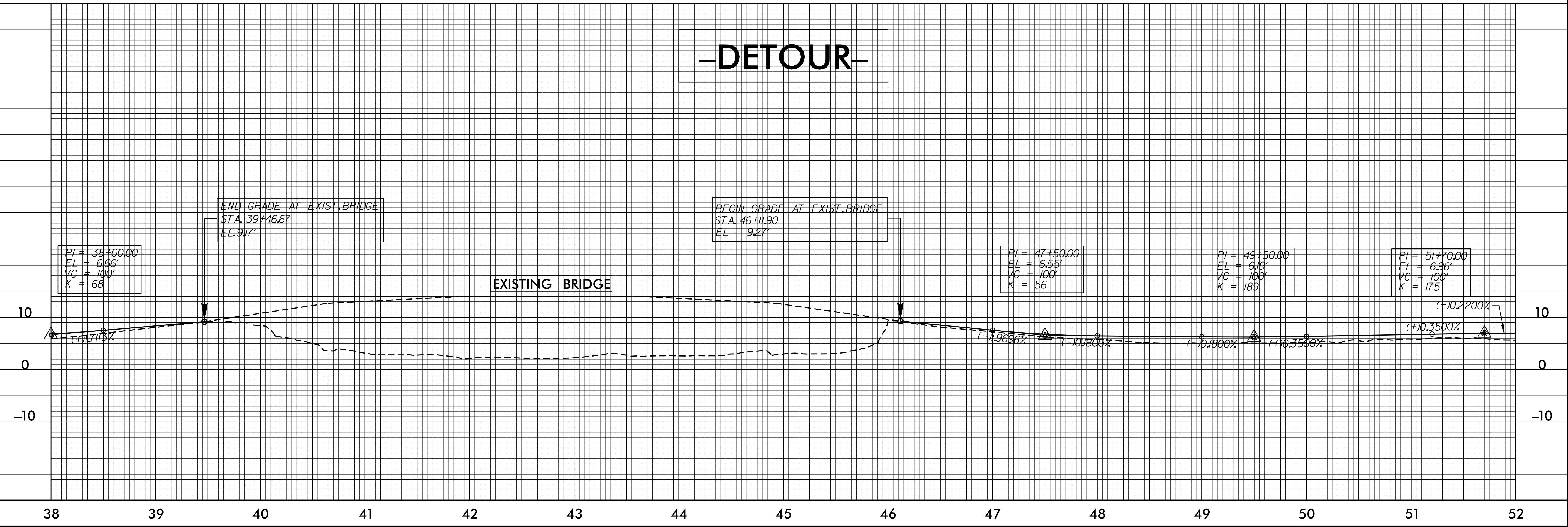
PROJECT REFERENCE NO. B-2500AB	SHEET NO. EC-6/CONST.2B-9
RW SHEET NO.	
ROADWAY DESIGN ENGINEER	HYDRAULICS ENGINEER

 ENVIRONMENTALLY SENSITIVE AREA  
SEE PROJECT SPECIAL PROVISIONS



-DETOUR-

PI Sta 38+89.92	PI Sta 46+73.78
Δ = 10°03'46.8" (RT)	Δ = 10°17'29.4" (RT)
D = 9°01'22.6"	D = 8°25'33.1"
L = 111.53'	L = 122.14'
T = 55.91'	T = 61.24'
R = 635.00'	R = 680.00'
SE = .03	SE = .03



22-SEP-2015 09:30 D:\s1gm\B2500AB.ec.pst\2B-9.dgn  
 User: s1gm  
 Plot: 1/10