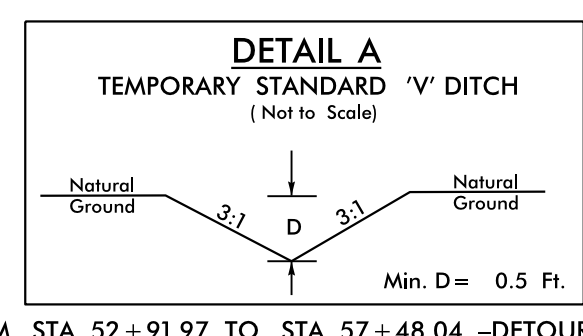
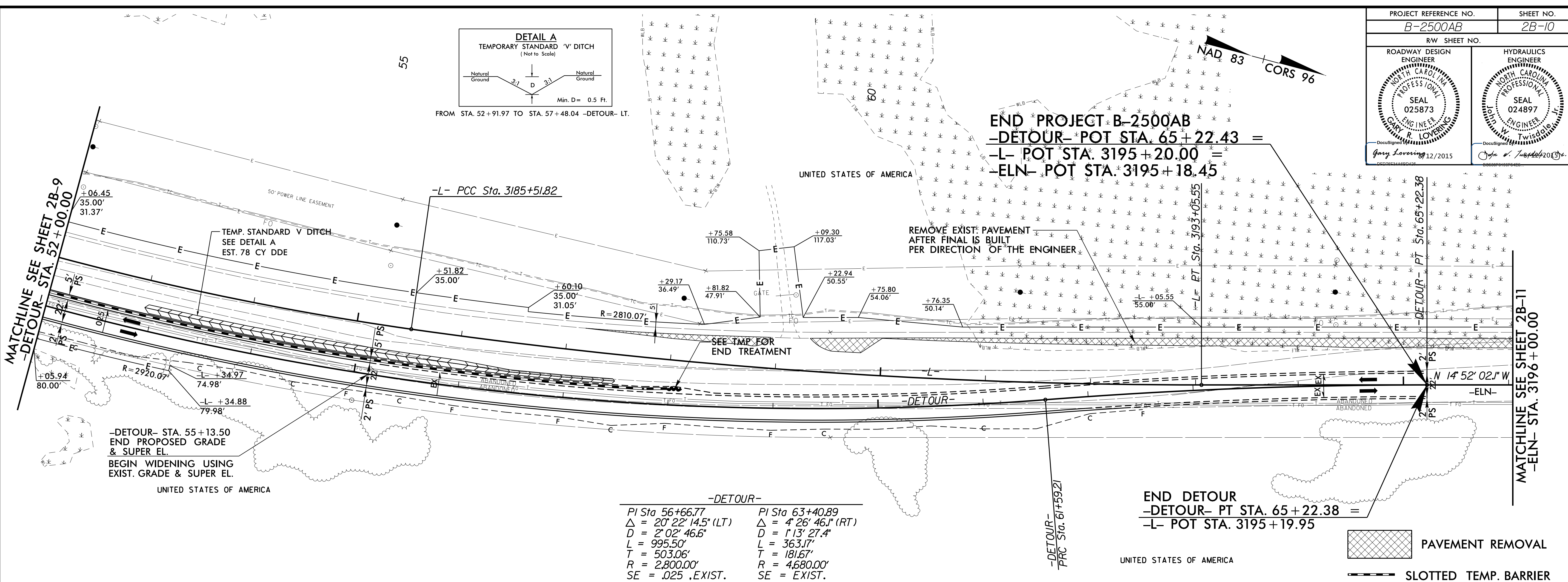


8/17/99

PROJECT REFERENCE NO. B-2500AB	SHEET NO. 2B-10
RW SHEET NO.	
ROADWAY DESIGN ENGINEER GARY R. LOVERING PROFESSIONAL SEAL 025873 12/2015	HYDRAULICS ENGINEER JOHN W. TWISDALE PROFESSIONAL SEAL 024897



FROM STA. 52+91.97 TO STA. 57+48.04 -DETOUR- LT.

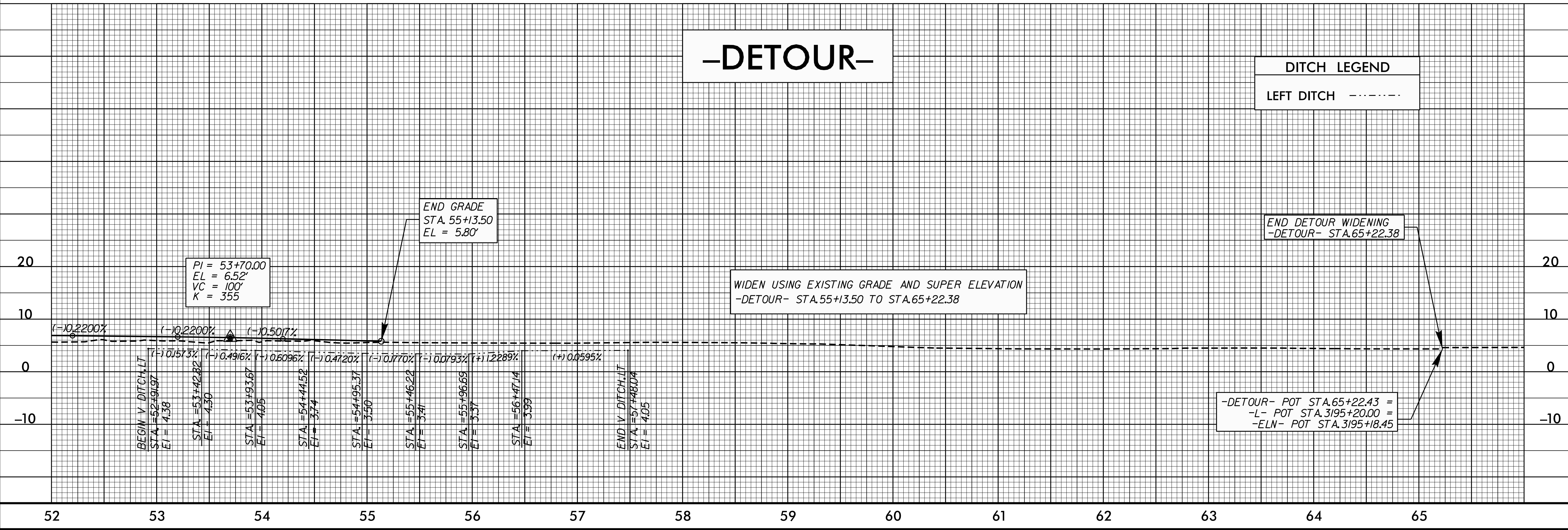


-DETOUR-

PI Sta 56+66.77	PI Sta 63+40.89
$\Delta = 20^\circ 22' 14.5''$ (LT)	$\Delta = 4^\circ 26' 46.1''$ (RT)
D = 2'02' 46.6"	D = 1'13' 27.4"
L = 995.50'	L = 363.17'
T = 503.06'	T = 181.67'
R = 2,800.00'	R = 4,680.00'
SE = .025 ,EXIST.	SE = EXIST.

END DETOUR
 -DETOUR- PT STA. 65+22.38 =
 -L- POT STA. 3195+19.95

PAVEMENT REMOVAL
 SLOTTED TEMP. BARRIER



P:\AUG-2015\1451\B2500AB Detour\B2500AB_Rdy_psh02B-10.dgn