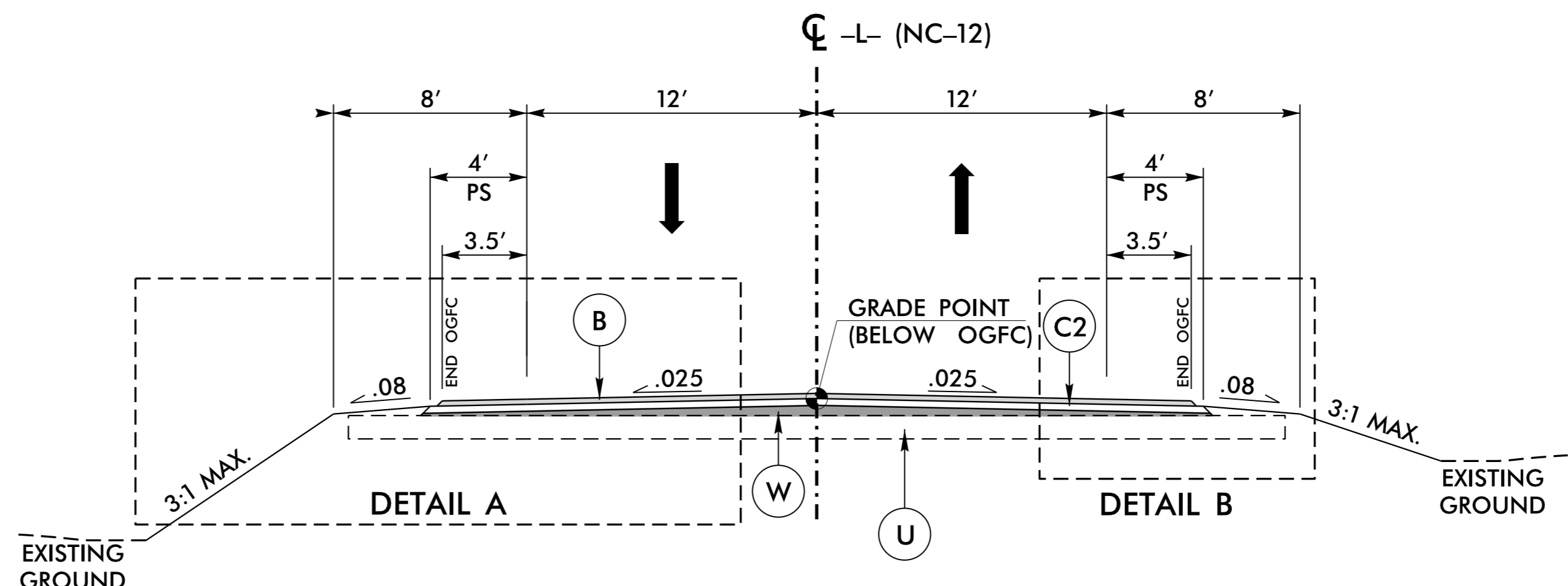


6/2/09

PAVEMENT SCHEDULE (MAY 18, 2015)	
B	PROP. APPROX. 0.75" OPEN-GRADED ASPHALT FRICTION COURSE (OGFC), TYPE FC-2 MODIFIED, AT AN AVERAGE RATE OF 90 LBS. PER SQ. YD.
C1	PROP. APPROX. 2" ASPHALT CONCRETE SURFACE COURSE TYPE S9.5B, AT AN AVERAGE RATE OF 224 LBS. PER SQ. YD.
C2	PROP. APPROX. 3" ASPHALT CONCRETE SURFACE COURSE TYPE S9.5B, AT AN AVERAGE RATE OF 168 LBS. PER SQ. YD. IN EACH OF TWO LAYERS.
C3	PROP. VAR. DEPTH ASPHALT CONCRETE SURFACE COURSE, TYPE S9.5B, AT AN AVERAGE RATE OF 112 LBS. PER SQ.YD. PER 1" DEPTH TO BE PLACED IN LAYERS NOT LESS THAN 1.5" IN DEPTH OR GREATER THAN 2" IN DEPTH.
E1	PROP. APPROX. 4" ASPHALT CONCRETE BASE COURSE TYPE B25.0B, AT AN AVERAGE RATE OF 456 LBS. PER SQ.YD.
E2	PROP. APPROX. 5" ASPHALT CONCRETE BASE COURSE TYPE B25.0B, AT AN AVERAGE RATE OF 570 LBS. PER SQ.YD.
E3	PROP. VAR. DEPTH ASPHALT CONCRETE BASE COURSE, TYPE B25.0B, AT AN AVERAGE RATE OF 114 LBS. PER SQ.YD. PER 1" DEPTH TO BE PLACED IN LAYERS NOT LESS THAN 4" OR GREATER THAN 5.5" IN DEPTH.
T	EARTH MATERIAL
U	EXISTING PAVEMENT
V1	VARIABLE DEPTH MILLING (0" TO 6")
V2	VARIABLE DEPTH MILLING (0" TO 4")
W	VARIABLE DEPTH ASPHALT (SEE WEDGING DETAIL THIS SHEET)

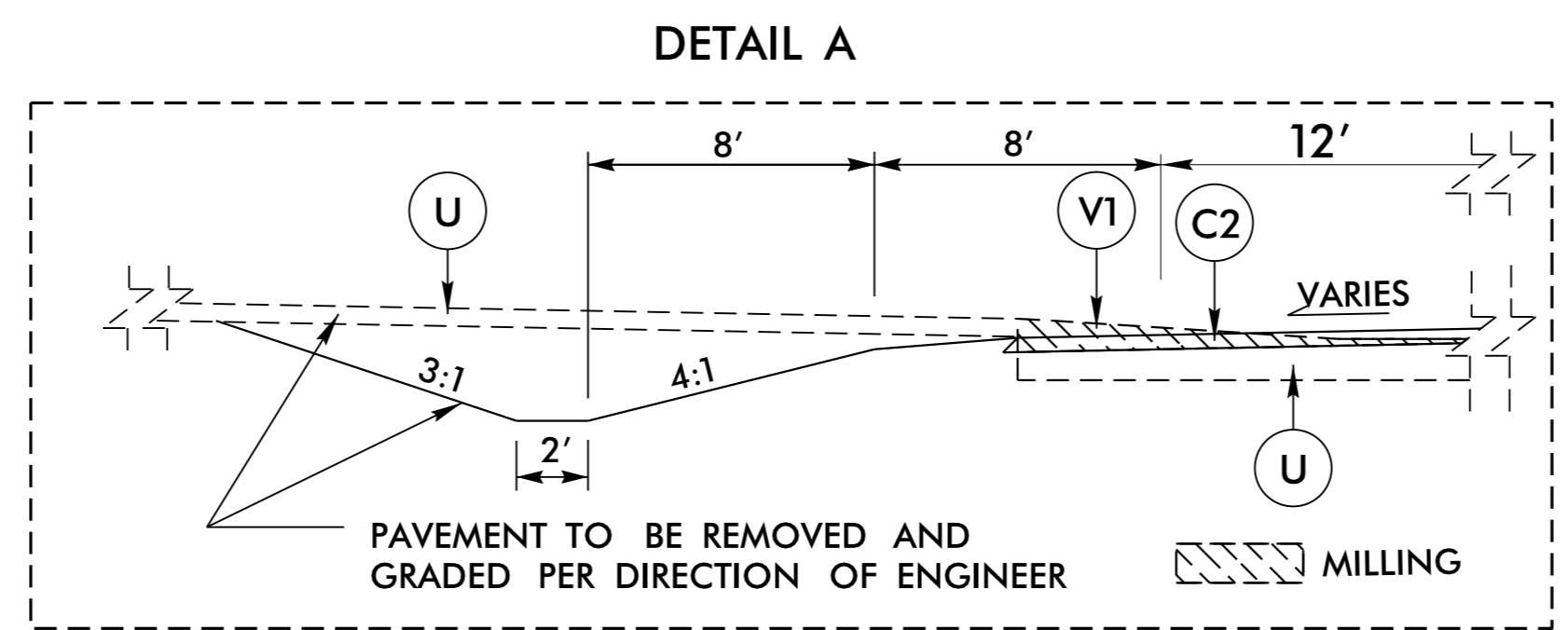
NOTE: PAVEMENT EDGE SLOPES ARE 1:1 UNLESS SHOWN OTHERWISE.

PROJECT REFERENCE NO. B-2500AB	SHEET NO. 2A-1
ROADWAY DESIGN ENGINEER GARY R. LOVERING SEAL 025873 NORTH CAROLINA PROFESSIONAL ENGINEER	PAVEMENT DESIGN ENGINEER CLARK S. MORRISON SEAL 022896 NORTH CAROLINA PROFESSIONAL ENGINEER
DocuSigned by: Gary Lovering 8/14/2015	DocuSigned by: Clark S. Morrison 8/13/2015

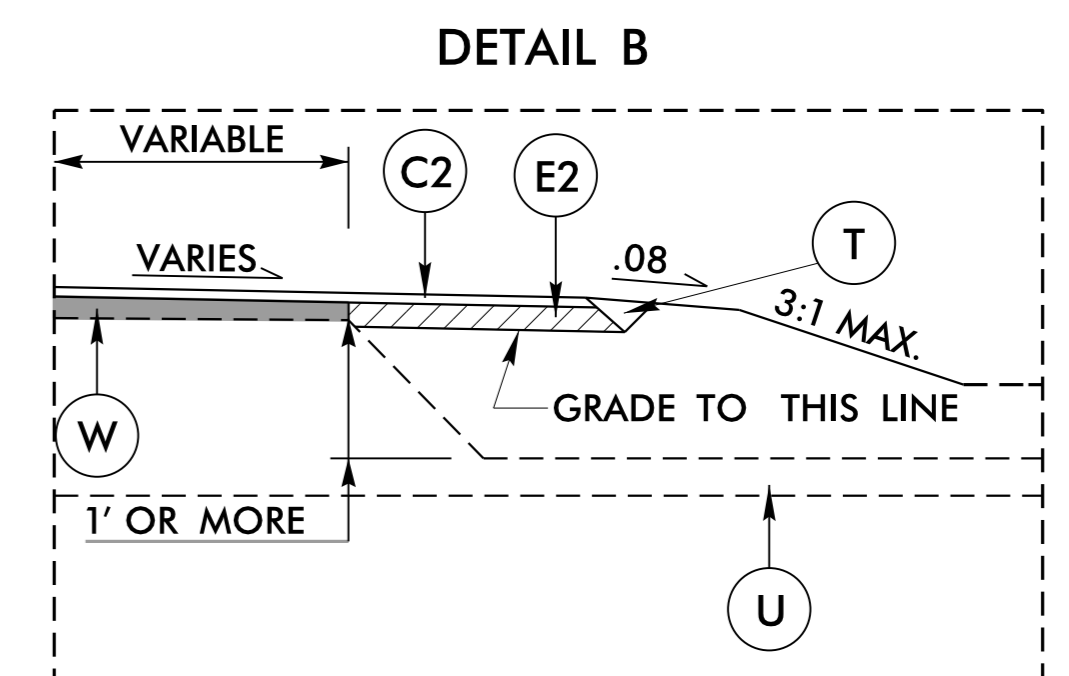


TYPICAL SECTION NO. 1

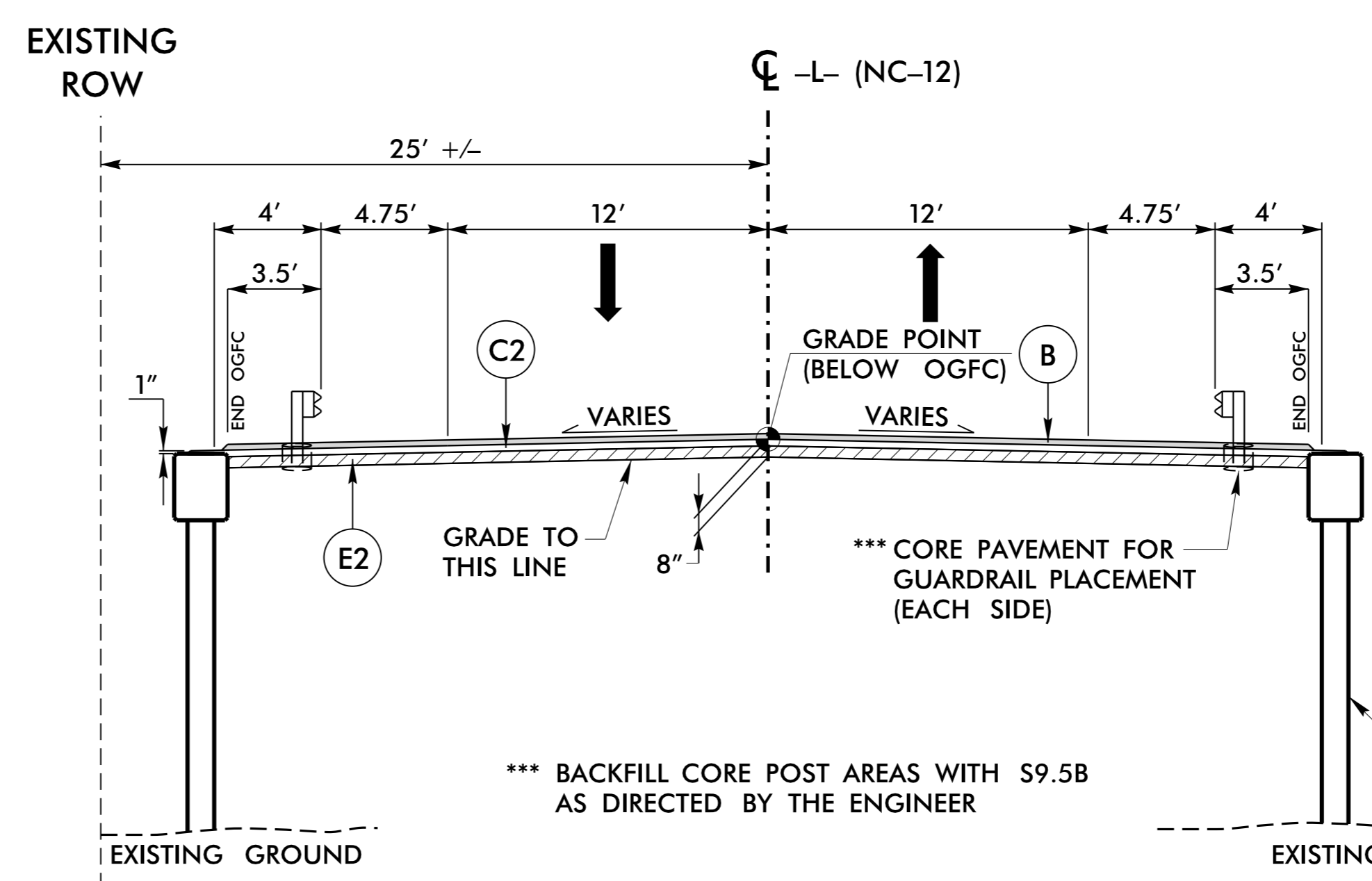
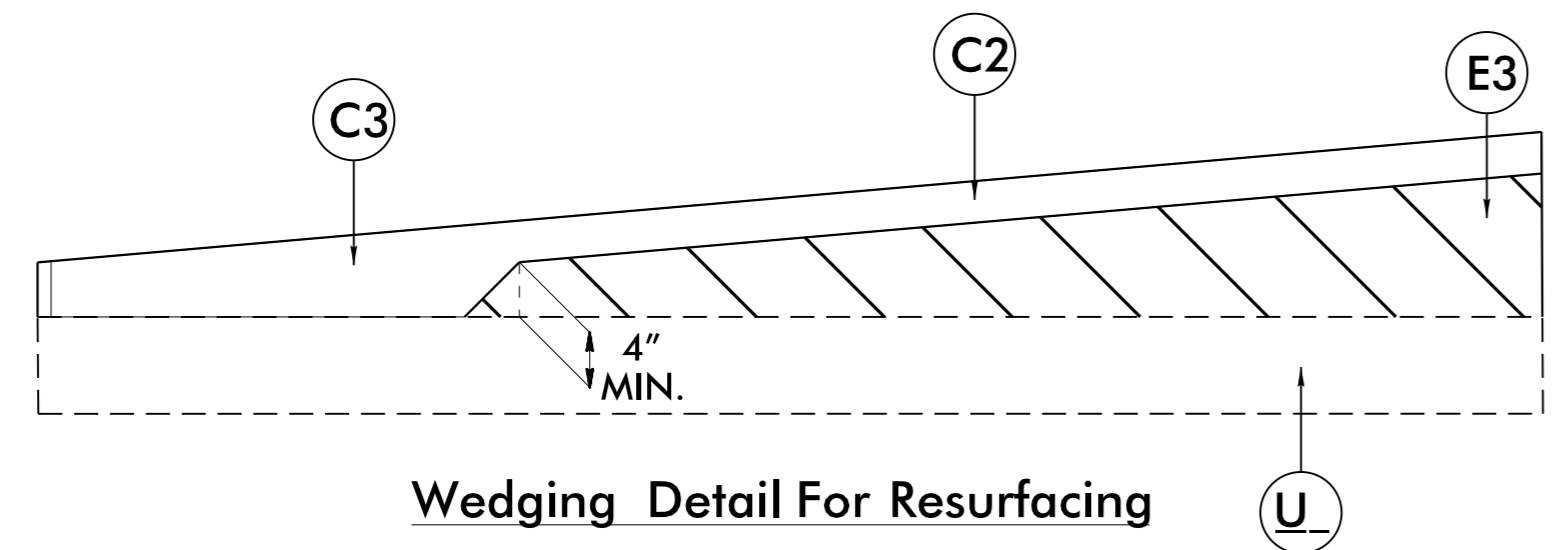
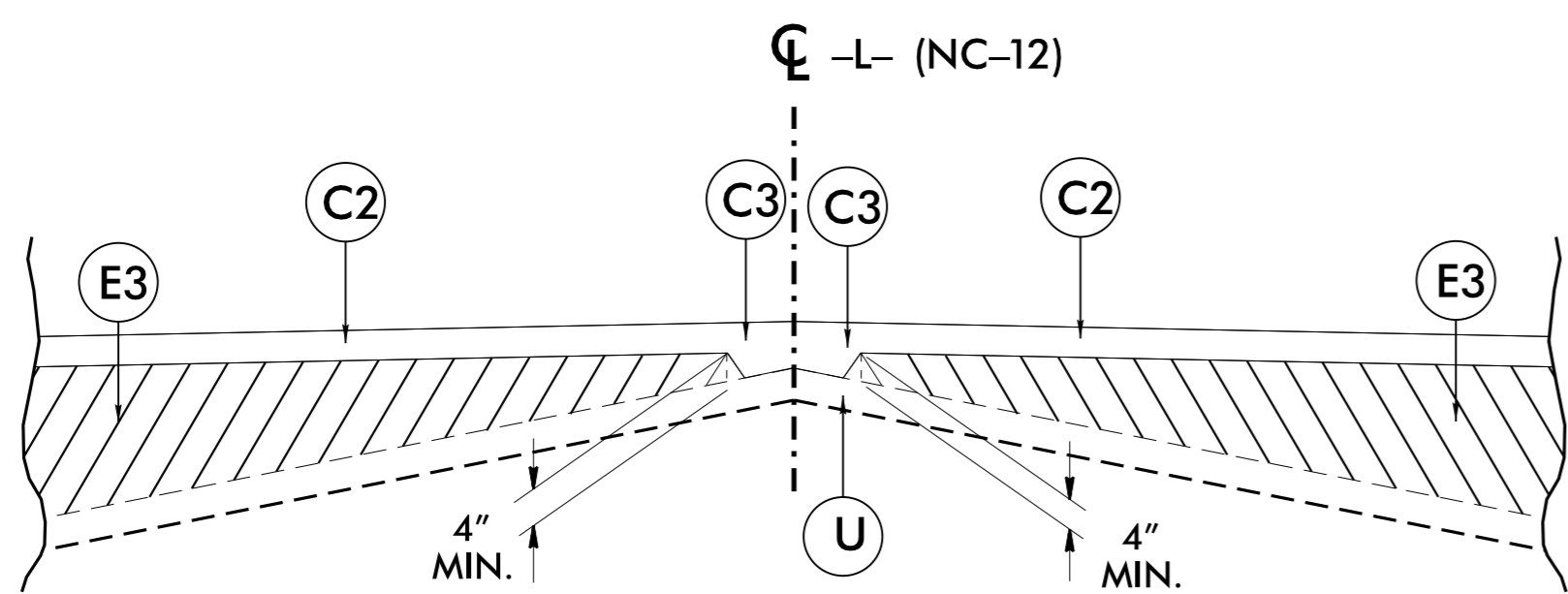
TYPICAL SECTION NO. 1  
 -L- STA. 3144+20.00 TO STA. 3154+00.00  
 -L- STA. 3186+00.00 TO STA. 3194+00.00



DETAIL A:  
 -L- STA. 3144+20.00 (-ELN- STA. 3144+20.00) TO STA. 3149+00.00 LT  
 -L- STA. 3190+00.00 TO STA. 3194+00.00 (-ELN- STA. 3193+98.45) LT



DETAIL B:  
 -L- STA. 3152+00.00 TO STA. 3154+00.00 RT  
 -L- STA. 3186+00.00 TO STA. 3188+50.00 RT



TYPICAL SECTION NO. 2

TYPICAL SECTION NO. 2  
 -L- STA. 3154+00.00 TO STA. 3159+00.00 (BEGIN BRIDGE)  
 -L- STA. 3182+50.00 (END BRIDGE) TO STA. 3186+00.00

07\_AUG-2015 10:46 02500AB\_RdJ-tyr.dgn