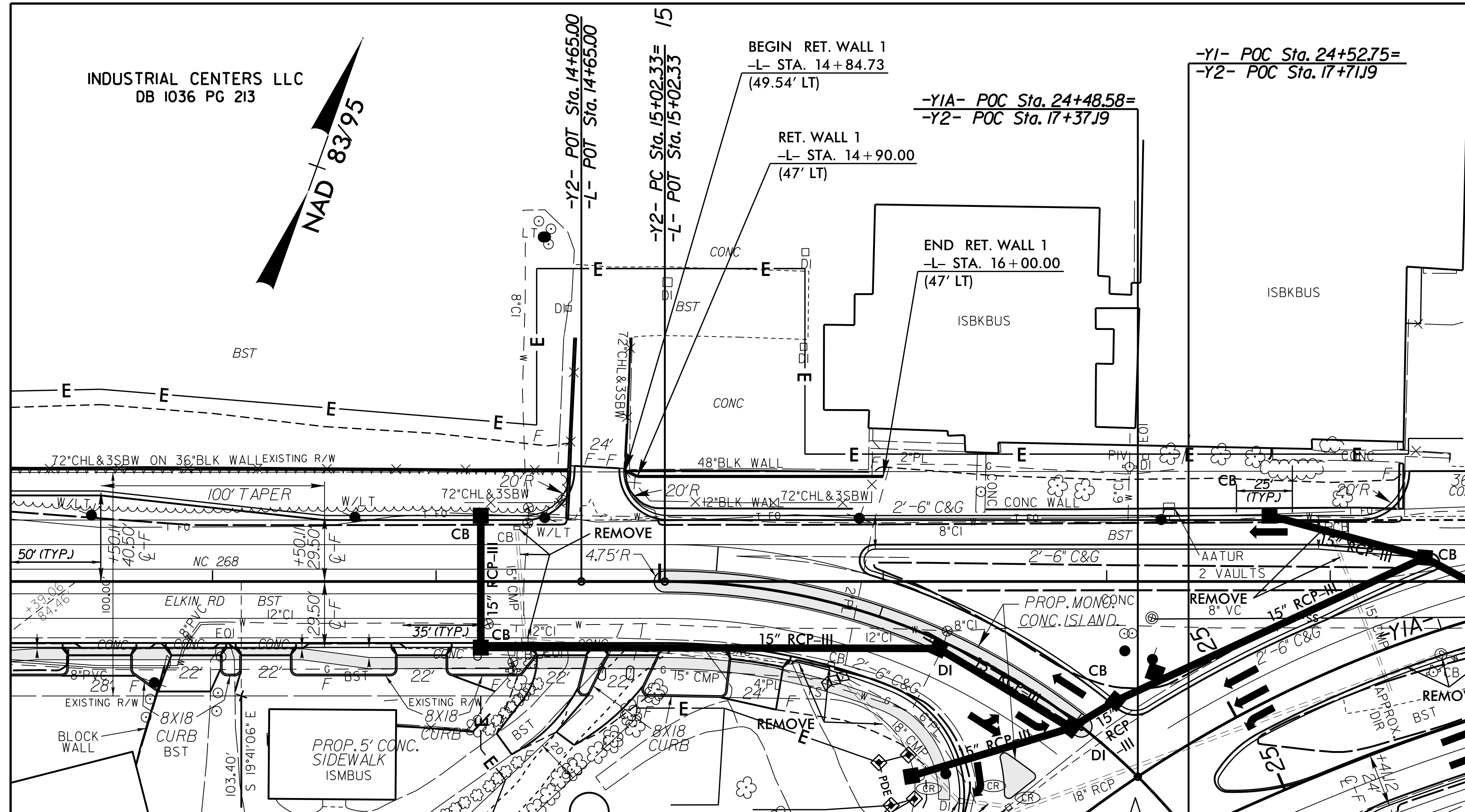
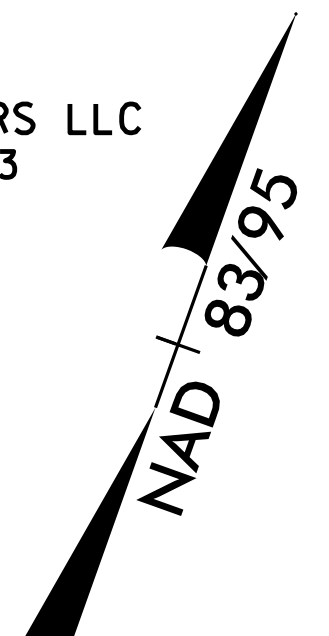
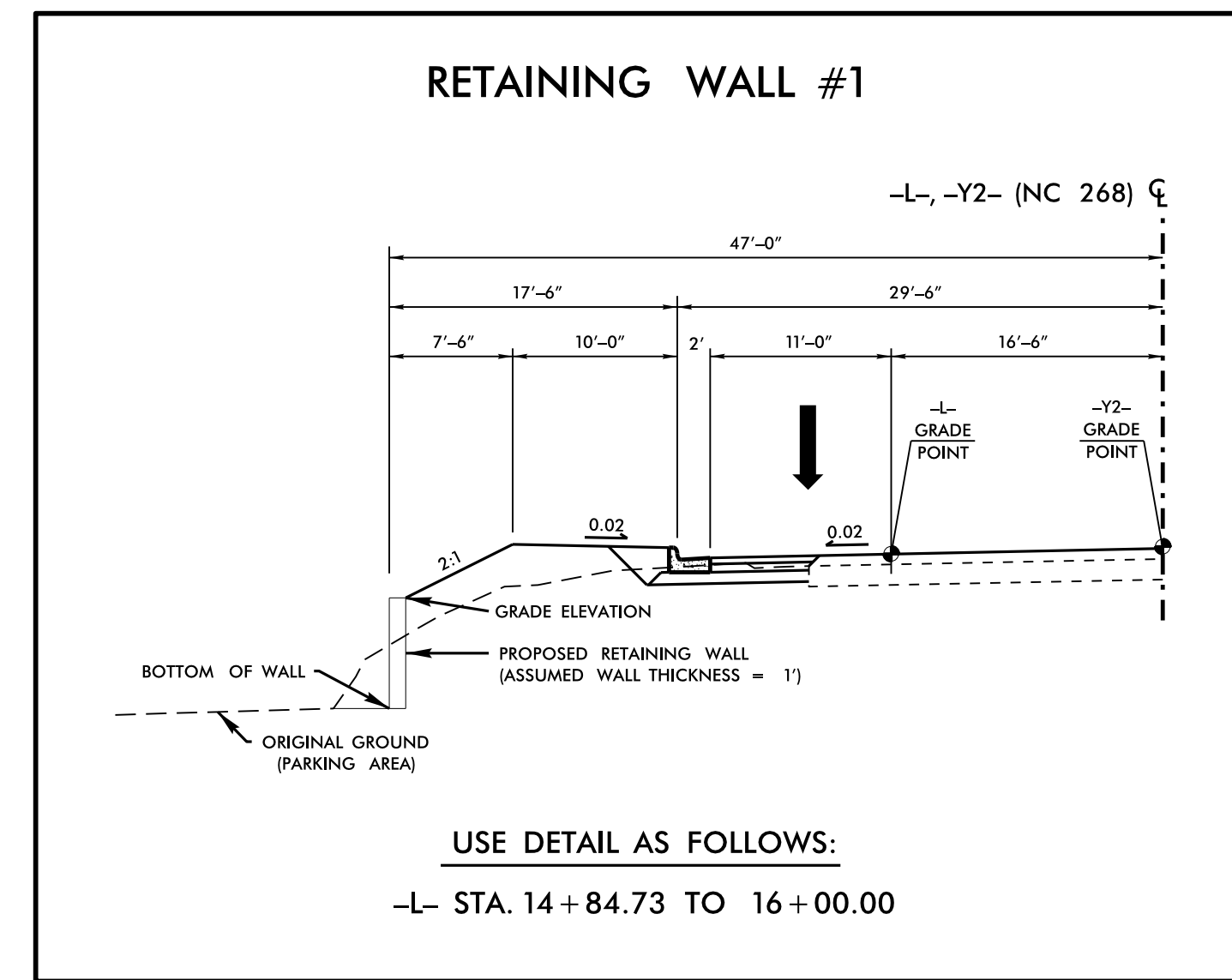


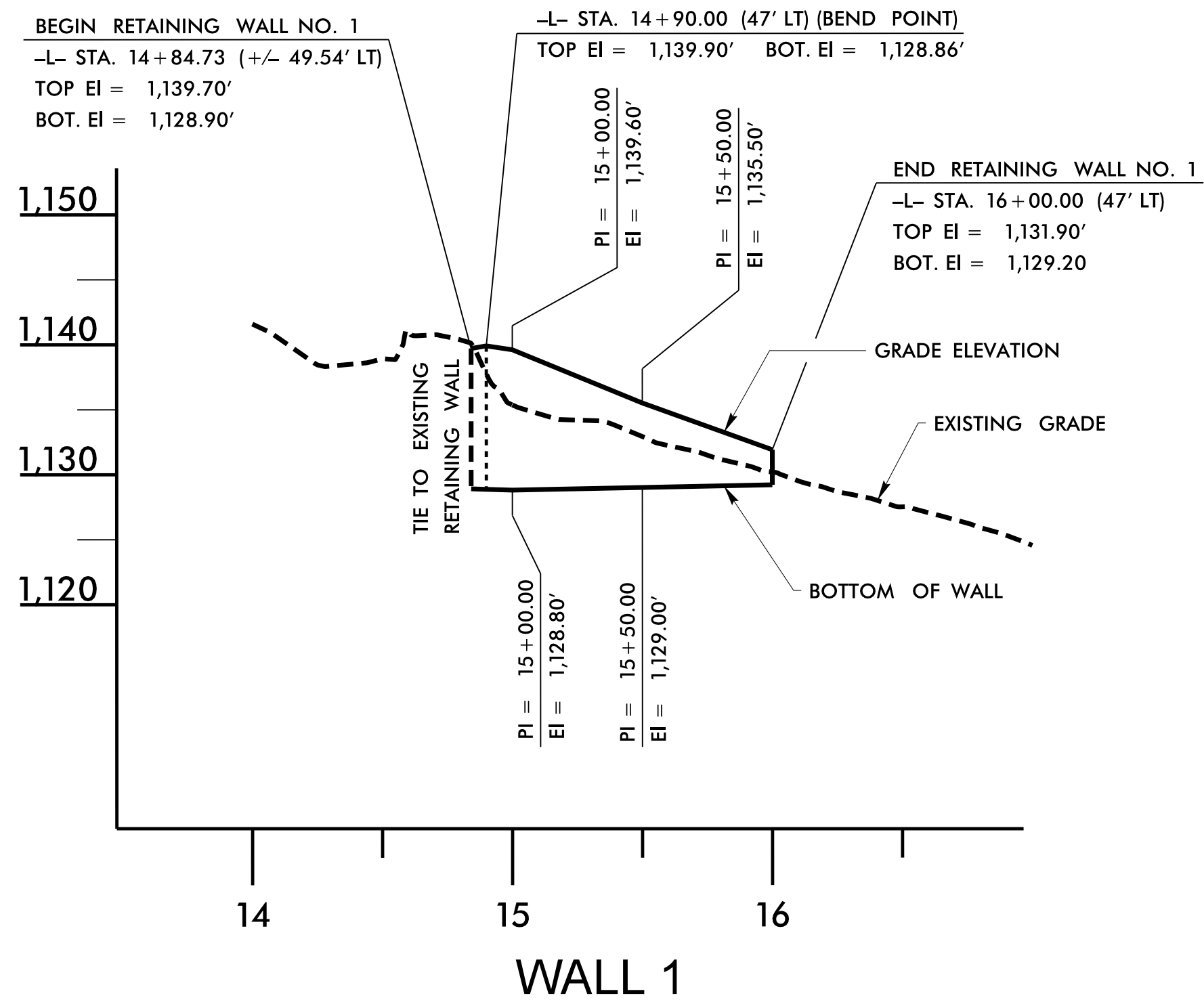
INDUSTRIAL CENTERS LLC
DB I036 PG 213



LOCATION SKETCH



USE DETAIL AS FOLLOWS:
-L- STA. 14+84.73 TO 16+00.00



RETAINING WALL 1 EXPOSED
AREA = 836 SF

ESTIMATED PRECAST GRAVITY WALL QUANTITY	
RETAINING WALL NO.	PRECAST GRAVITY RETAINING WALL (SQUARE FEET)
1	836

GEOTECHNICAL ENGINEER

ENGINEER

NORTH CAROLINA PROFESSIONAL SEAL 29869

Slane

7/23/2015

SIGNATURE DATE SIGNATURE DATE

PREPARED BY: EJS DATE: 7/21/15
REVIEWED BY: SCC DATE: 7/21/15

NORTH CAROLINA DEPARTMENT OF TRANSPORTATION DIVISION OF HIGHWAYS

GEOTECHNICAL ENGINEERING UNIT

PROJECT NO.: R-2603
WILKES COUNTY
STATION: 14+84.73 -L- TO 16+00.00 -L-
SHEET 1 OF 2

REVISIONS						SHEET NO.
NO.	BY	DATE	NO.	BY	DATE	
1			3			W1
2			4			