

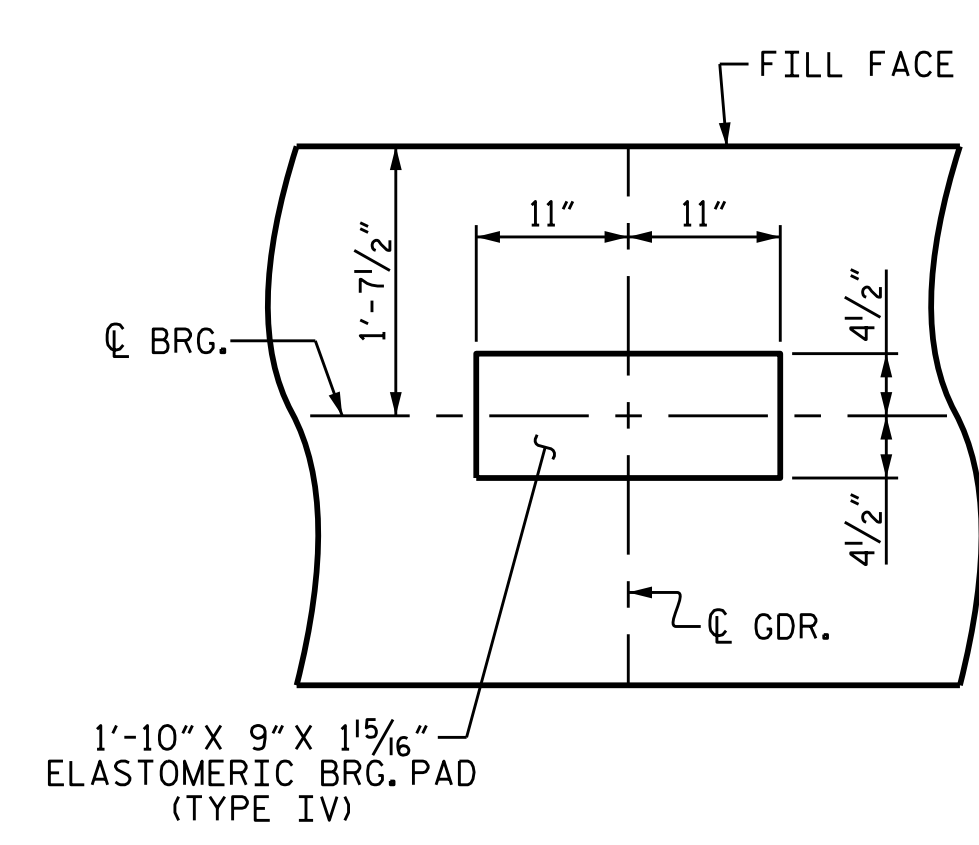
PLAN

NOTES

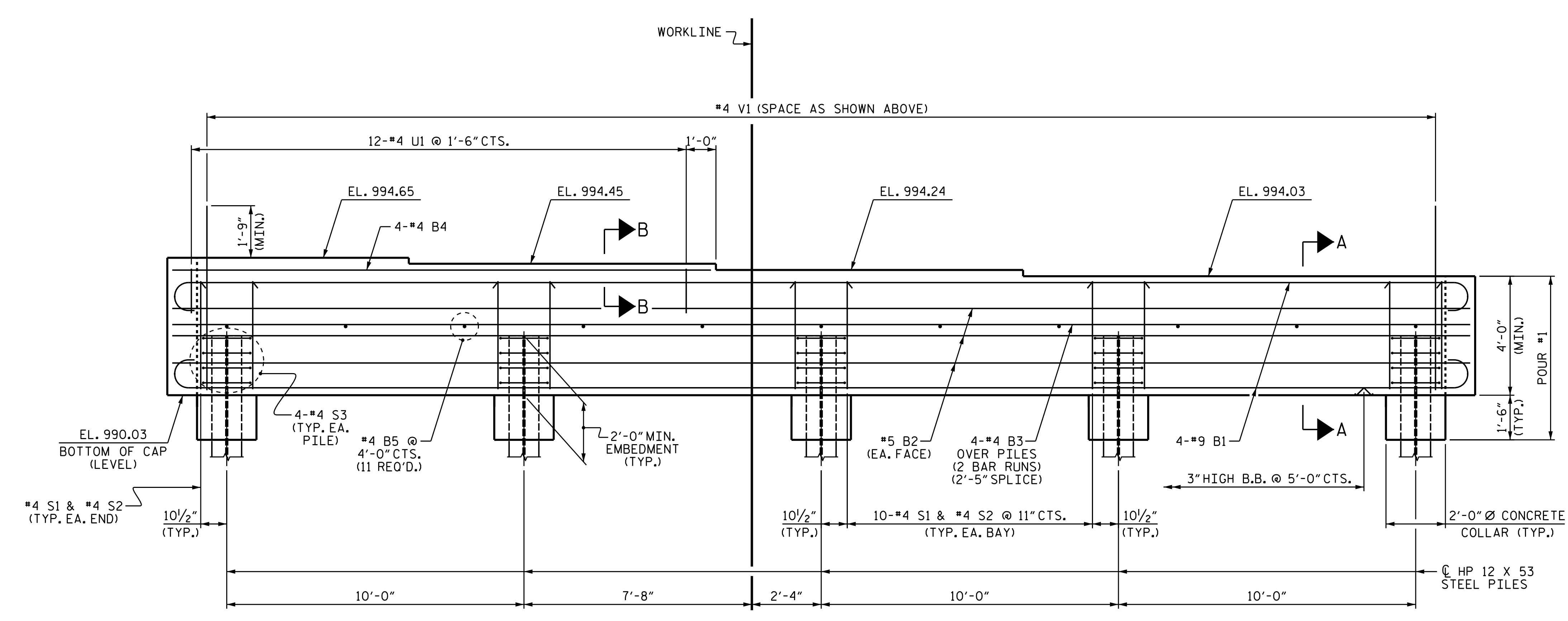
SEE SUPERSTRUCTURE SHEETS FOR UPPER PART OF INTEGRAL END BENT DETAILS.

THE CONTRACTOR SHALL PROVIDE FOR INSTALLATION OF THE 4" DIAMETER DRAIN PIPE THROUGH THE WING WALL AS REQUIRED FOR REINFORCED BRIDGE APPROACH FILLS. SEE THE ROADWAY PLANS. REINFORCING STEEL IN THE WING WALL MAY BE SHIFTED AS NECESSARY TO CLEAR THE DRAIN PIPE.

THE CONTRACTOR'S ATTENTION IS CALLED TO THE FACT THAT THE UPPER PART OF THE END BENT WINGS ARE TO BE POURED WITH POUR #3 OF THE SUPERSTRUCTURE.



DETAIL A
(TYP. EA. BEARING)



ELEVATION

PROJECT NO. R-2603
WILKES COUNTY
 STATION: 117+35.00 -L-
 SHEET 1 OF 3

STATE OF NORTH CAROLINA DEPARTMENT OF TRANSPORTATION RALEIGH						SHEET NO.
SUBSTRUCTURE INTEGRAL END BENT No. 2						S-42
REVISIONS						TOTAL SHEETS
NO.	BY:	DATE:	NO.	BY:	DATE:	47
1			3			
2			4			

DRAWN BY : B.N. GRADY DATE : 12/14
 CHECKED BY : H.T. BARBOUR DATE : 2/15
 DESIGN ENGINEER OF RECORD: R.Z. DEAN DATE : 7/15



21-JUL-2015 08:32
 R:\Structures\Final Plans\Str#2\R2603_SD.E*.02.dgn
 bngrady