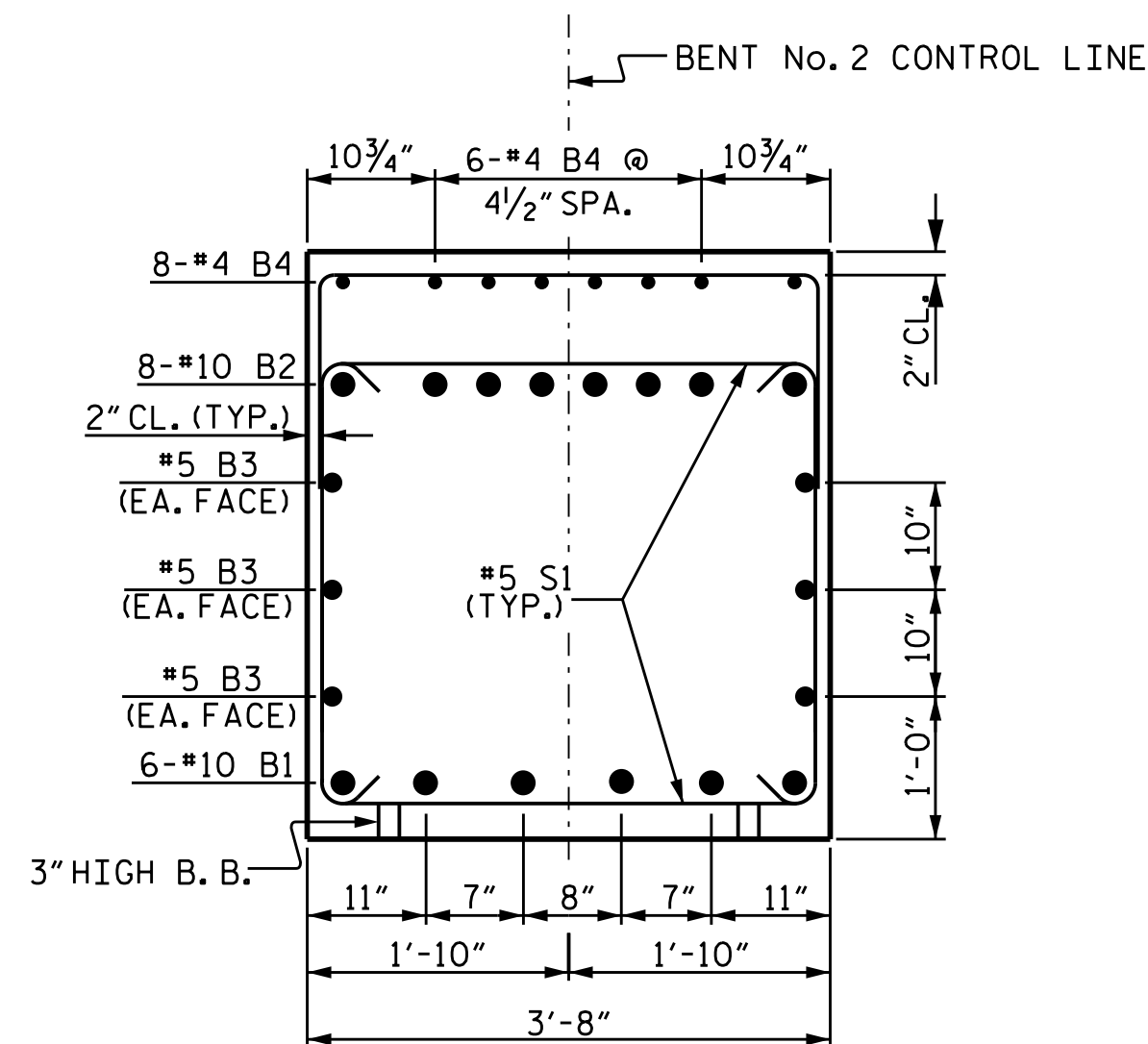
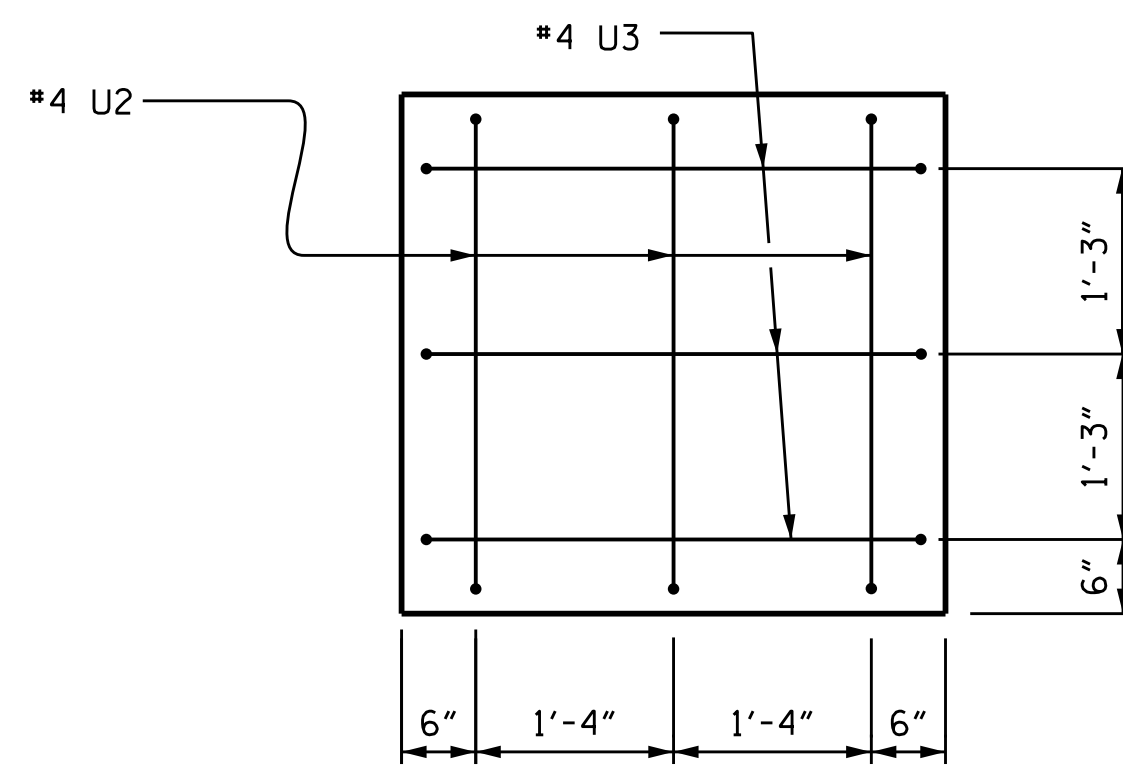


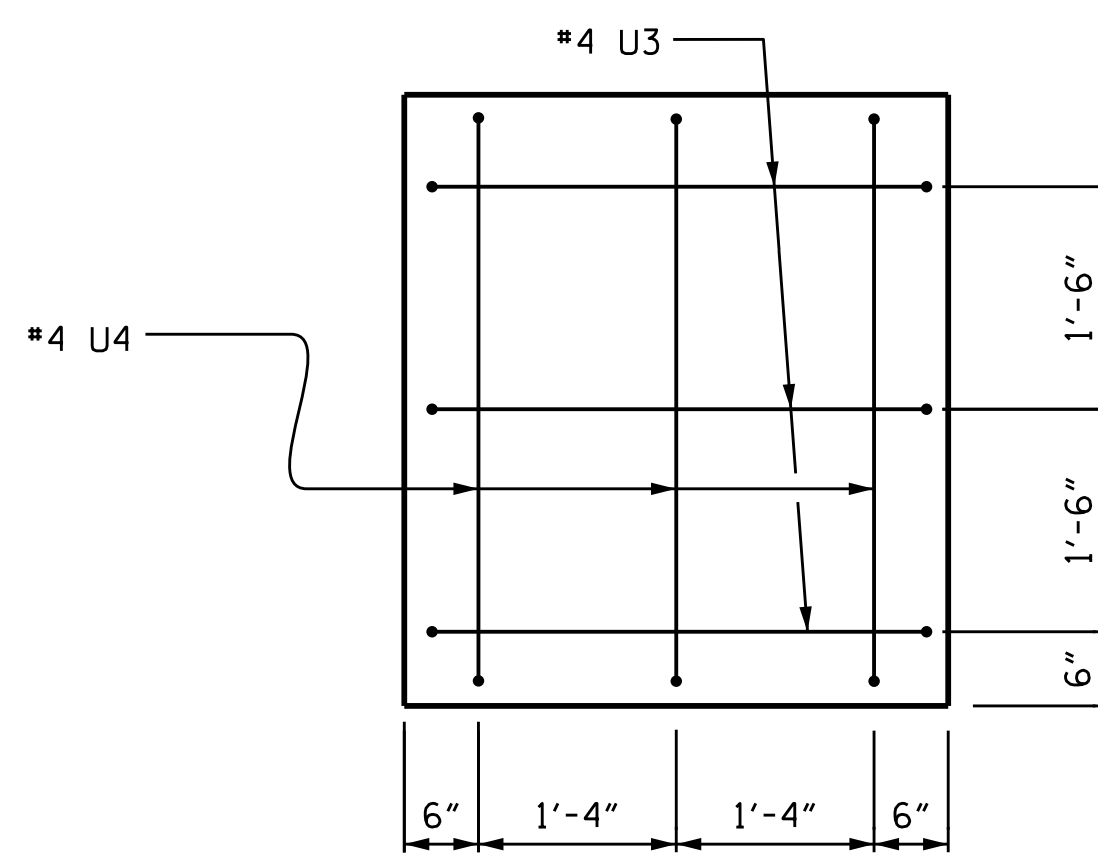
SECTION A-A



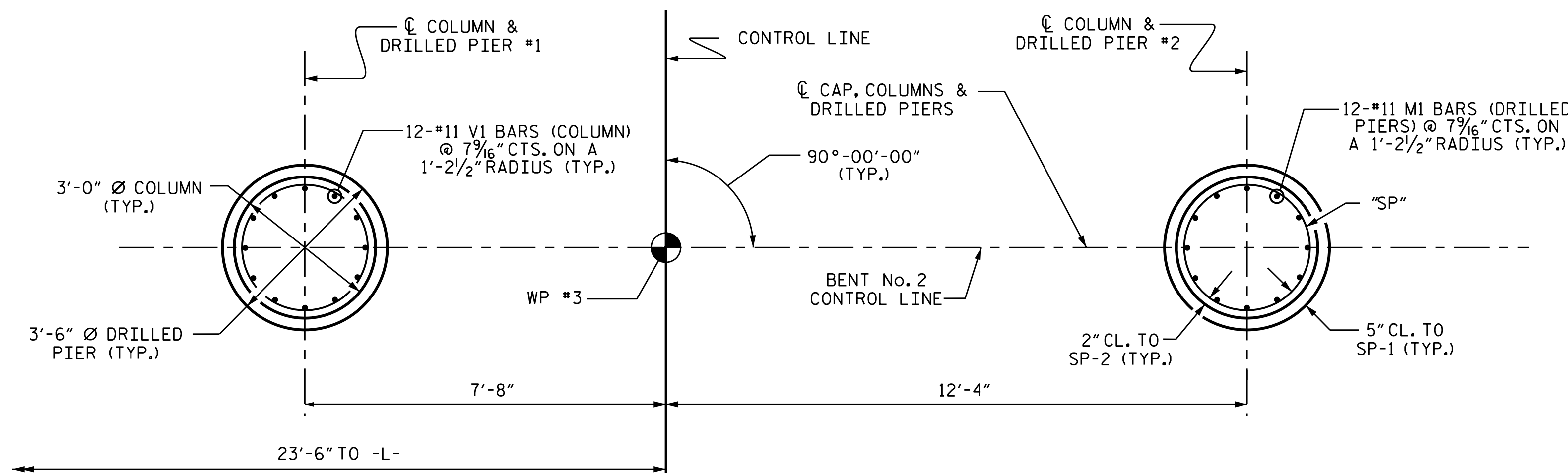
SECTION B-B



RIGHT END VIEW

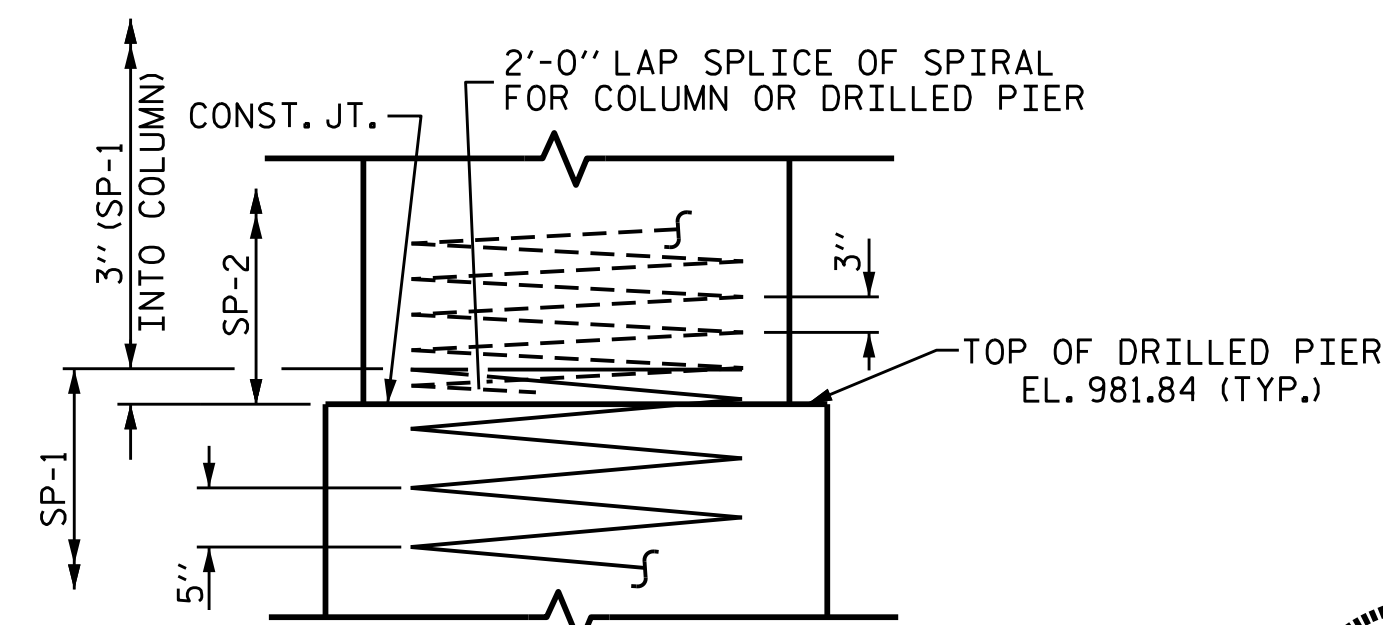


LEFT END VIEW

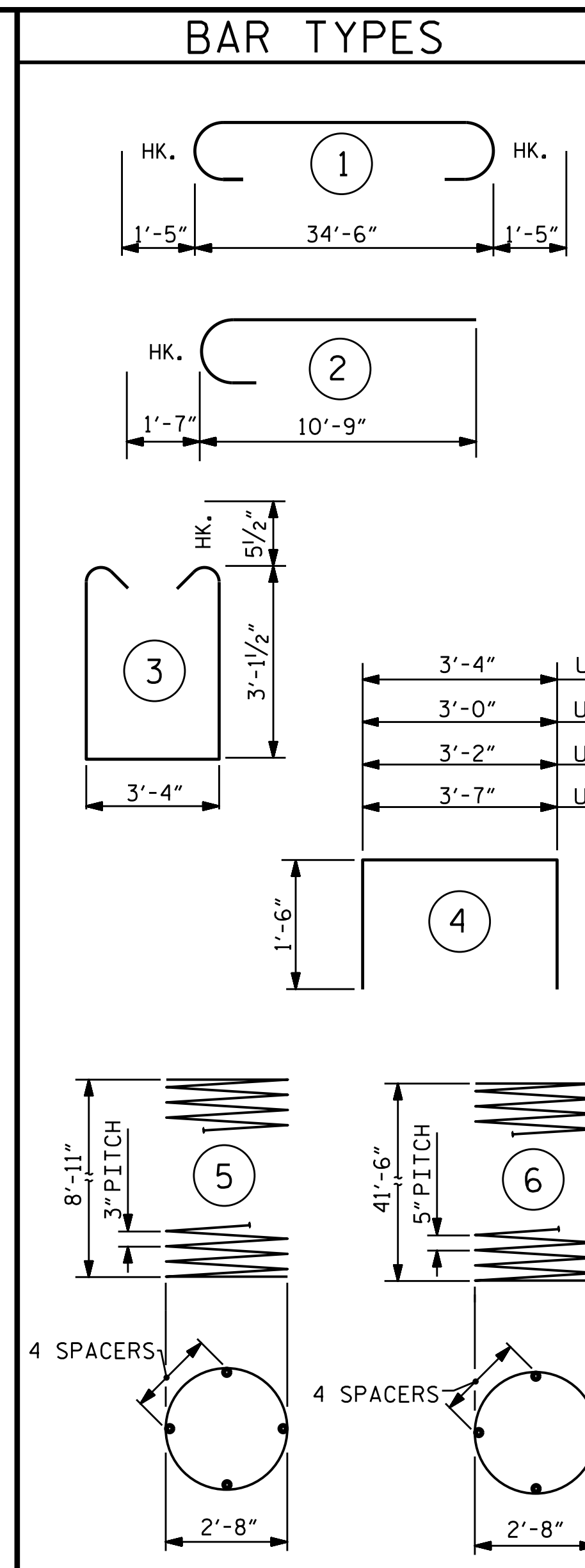


PLAN OF DRILLED PIERS & COLUMNS

(DETAILS ARE TYPICAL FOR EACH COLUMN & DRILLED PIER)



CONSTRUCTION JOINT DETAIL



ALL BAR DIMENSIONS ARE OUT TO OUT.

* THE SP-1 SPIRAL REINFORCING STEEL SHALL BE W31 OR D-31 COLD DRAWN WIRE OR #5 PLAIN OR DEFORMED BAR.

** THE SP-2 SPIRAL REINFORCING STEEL SHALL BE W20 OR D-20 COLD DRAWN WIRE OR #4 PLAIN OR DEFORMED BAR.

NO SEPARATE PAYMENT WILL BE MADE FOR CSL TUBES. CSL TUBES WILL BE INCLUDED IN THE UNIT PRICE BID FOR DRILLED PIERS.

BILL OF MATERIAL

BAR	NO.	SIZE	TYPE	LENGTH	WEIGHT
B1	6	#10	STR	34'-8"	895
B2	8	#10	STR	37'-4"	1285
B3	6	#5	STR	34'-8"	217
B4	8	#4	STR	13'-7"	73
M1	24	#11	STR	52'-2"	6652
S1	43	#5	3	10'-6"	471
U1	32	#4	4	6'-4"	135
U2	3	#4	4	6'-0"	12
U3	6	#4	4	6'-2"	25
U4	3	#4	4	6'-7"	13
V1	24	#11	2	12'-4"	1573

REINFORCING STEEL = 11351 LBS.

SP-1	2	*	6	832'-9"	1737
SP-2	2	**	5	307'-4"	411

SPIRAL COLUMN REINFORCING STEEL = 2148 LBS.

CLASS A CONCRETE

POUR #2 (COLUMNS) =	4.5	C.Y.
POUR #3 (CAP) =	17.8	C.Y.
TOTAL CLASS A CONCRETE	22.3	C.Y.

DRILLED PIERS:

DRILLED PIER CONCRETE

POUR #1 (DRILLED PIERS) =	29.9	C.Y.
3'-6" Ø DRILLED PIERS IN SOIL =	39.00	LIN. FT.
3'-6" Ø DRILLED PIERS NOT IN SOIL =	45.00	LIN. FT.
PERMANENT STEEL CASING FOR 3'-6" Ø DRILLED PIERS =	23.68	LIN. FT.
CSL TUBES =	348.00	LIN. FT.
SPT TESTING	2	EACH
SID INSPECTIONS	2	EACH

PROJECT NO. R-2603
WILKES COUNTY
 STATION: 117+35.00 -L-

SHEET 2 OF 2

STATE OF NORTH CAROLINA
 DEPARTMENT OF TRANSPORTATION
 RALEIGH
 SUBSTRUCTURE
 BENT No. 2

REVISIONS						SHEET NO.
NO.	BY:	DATE:	NO.	BY:	DATE:	S-41
1			3			TOTAL SHEETS
2			4			47

DRAWN BY: J.K. BOWLES DATE: 12/30/14
 CHECKED BY: H.T. BARBOUR DATE: 2/24/2015
 DESIGN ENGINEER OF RECORD: R.Z. DEAN DATE: 7-15

