

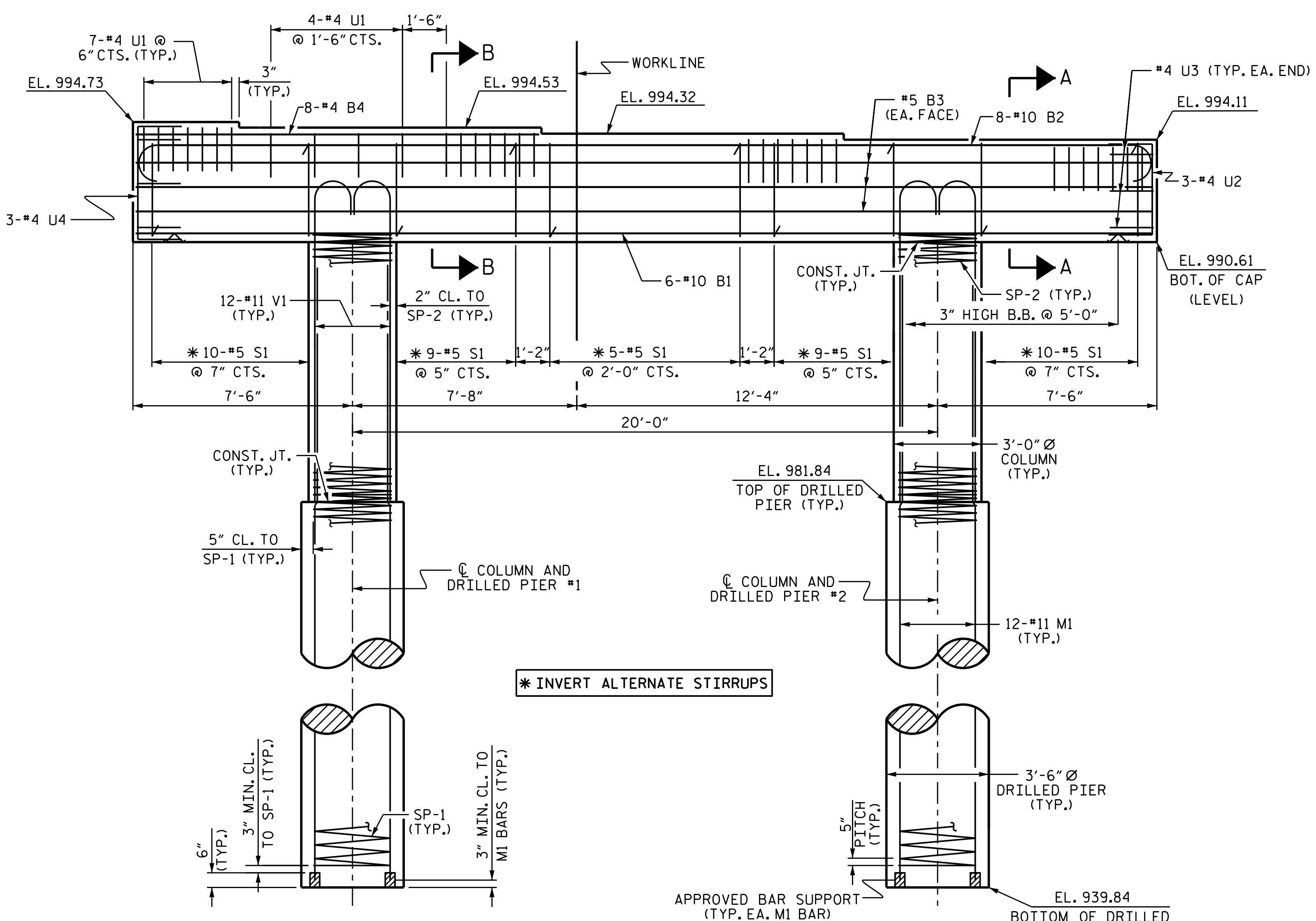
PLAN

SPAN C

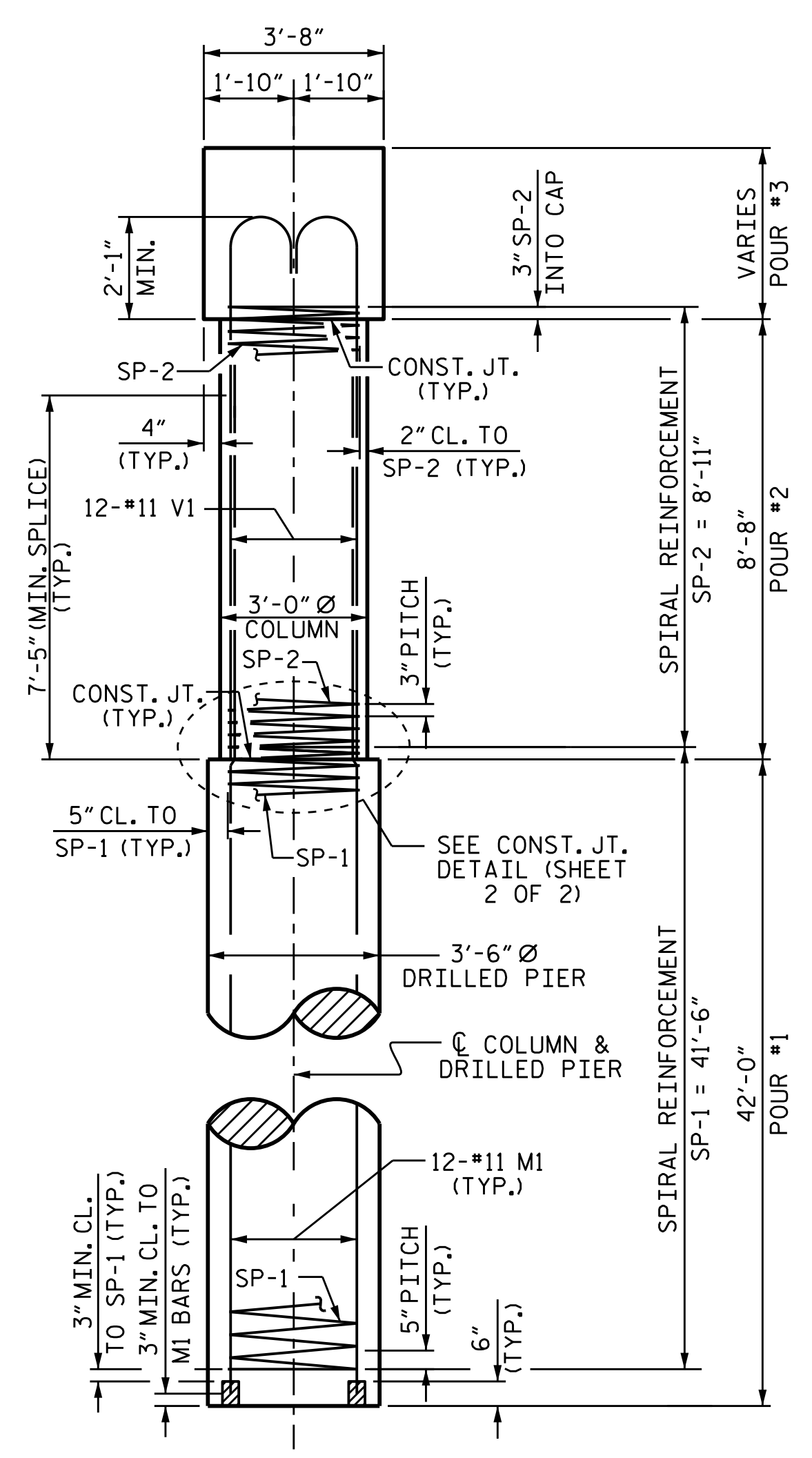
SPAN B

NOTES:

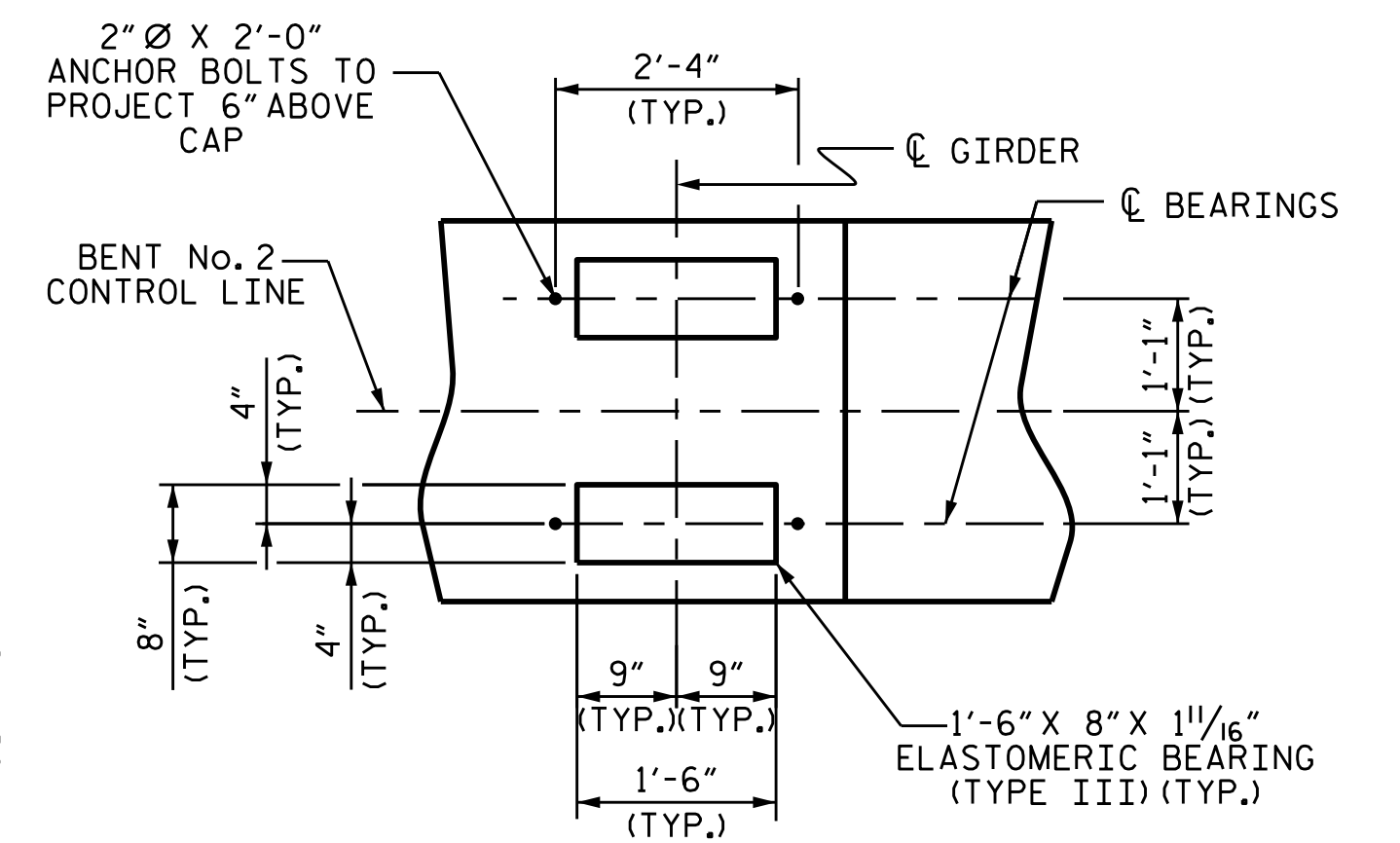
- STIRRUPS IN CAP MAY BE SHIFTED AS NECESSARY TO CLEAR ANCHOR BOLTS.
- HOOKS ON "V" BARS MAY BE TURNED AS NECESSARY FOR PLACING REINFORCING STEEL.
- ALL STEEL IN THE DRILLED PIERS IS INCLUDED IN THE PAY ITEMS FOR "REINFORCING STEEL" AND "SPIRAL COLUMN REINFORCING STEEL."
- THE LOCATION OF THE CONSTRUCTION JOINT IN THE DRILLED PIERS IS BASED ON AN APPROXIMATE GROUND LINE ELEVATION. IF THE CONSTRUCTION JOINT IS ABOVE THE ACTUAL GROUND LINE ELEVATION, THE CONTRACTOR SHALL PLACE THE CONSTRUCTION JOINT 1 FT. BELOW THE GROUND LINE.
- SPLICING OF THE LONGITUDINAL BARS IN THE DRILLED PIERS WILL BE NOT PERMITTED.
- THE CONTRACTOR'S ATTENTION IS CALLED TO THE FACT THAT THE LONGITUDINAL REINFORCEMENT FOR THE DRILLED PIERS IS DETAILED WITH 3 FEET OF EXTRA LENGTH.



ELEVATION



END ELEVATION



DETAIL A

PROJECT NO. R-2603  
WILKES COUNTY  
 STATION: 117+35.00 -L-  
 SHEET 1 OF 2

STATE OF NORTH CAROLINA  
 DEPARTMENT OF TRANSPORTATION  
 RALEIGH  
 SUBSTRUCTURE  
 BENT No. 2



DRAWN BY: J.K. BOWLES DATE: 12/30/14  
 CHECKED BY: H.T. BARBOUR DATE: 2/24/2015  
 DESIGN ENGINEER OF RECORD: R.Z. DEAN DATE: 7-15

REVISIONS						SHEET NO.	
NO.	BY:	DATE:	NO.	BY:	DATE:	S-40	
1			3			TOTAL SHEETS 47	
2			4				

21-JUL-2015 08:32  
 R:\Structures\Final Plans\Str#2\R2603.SD.B\*.dgn  
 bngady