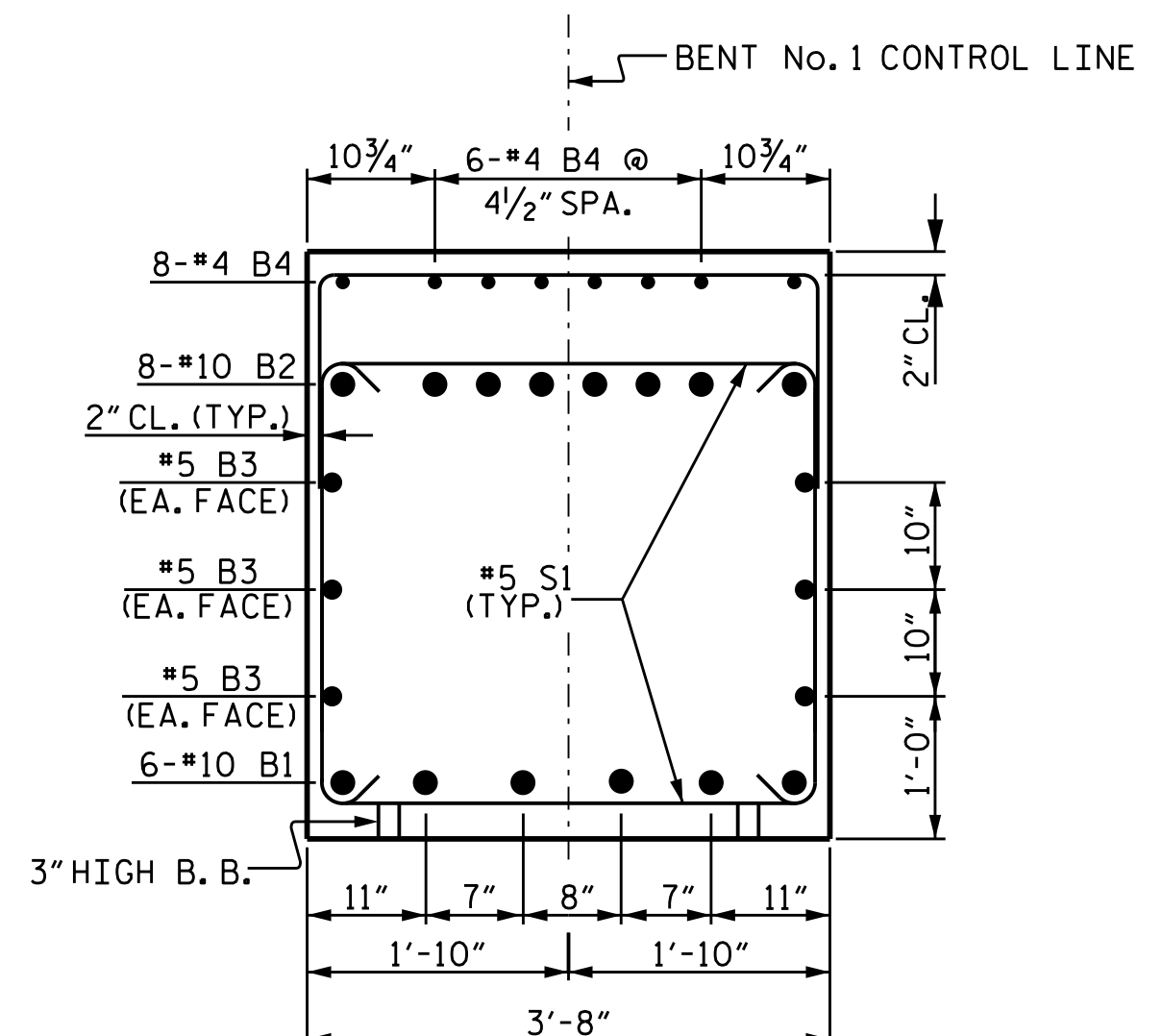
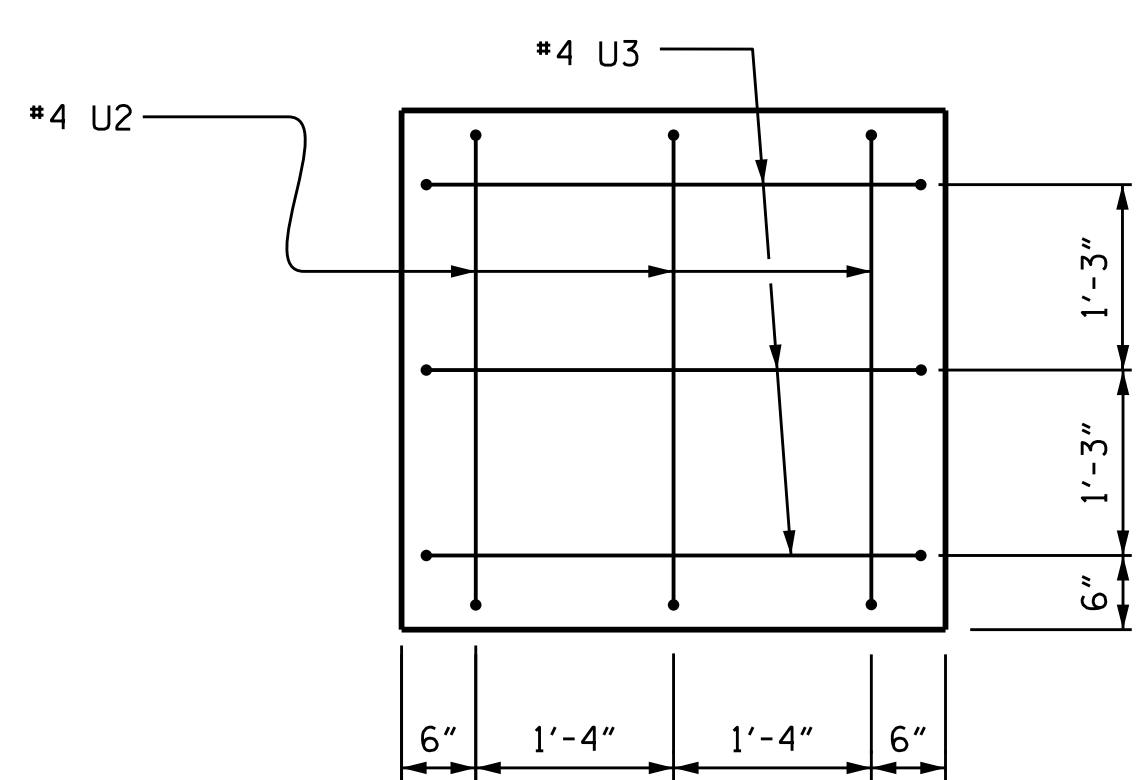


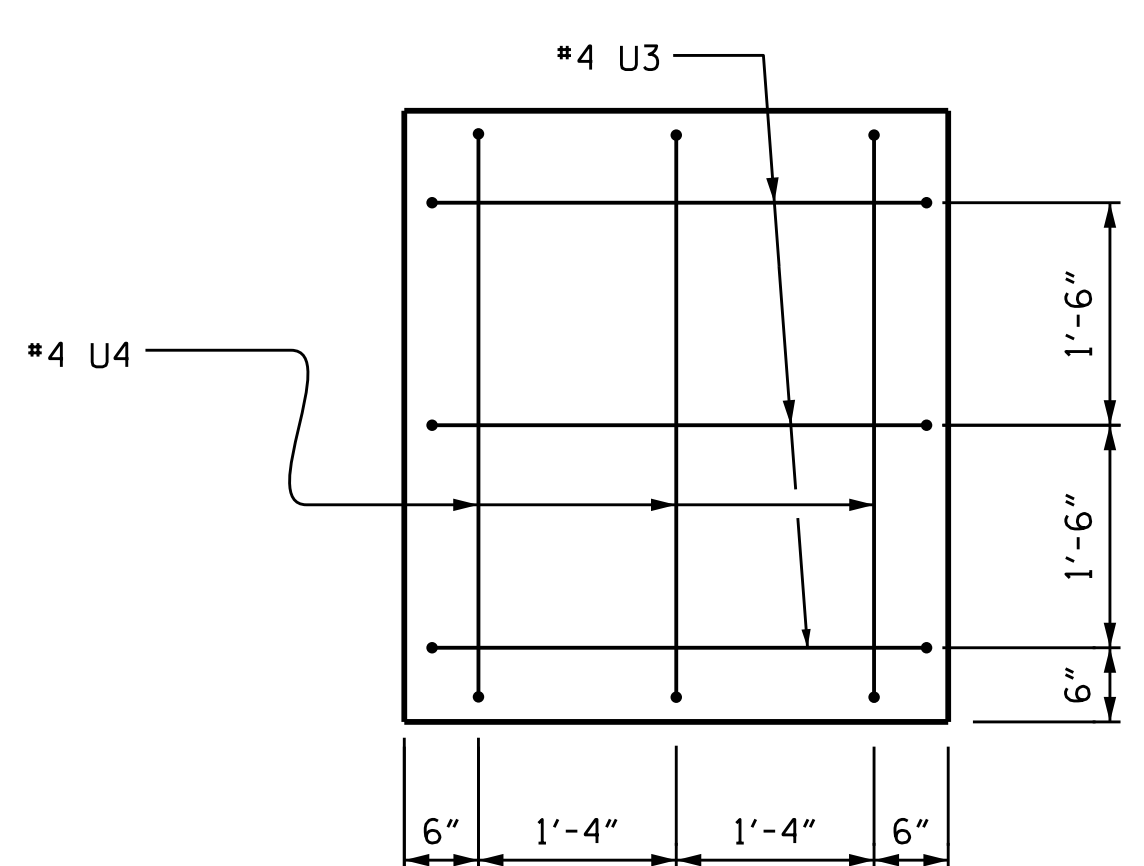
SECTION A-A



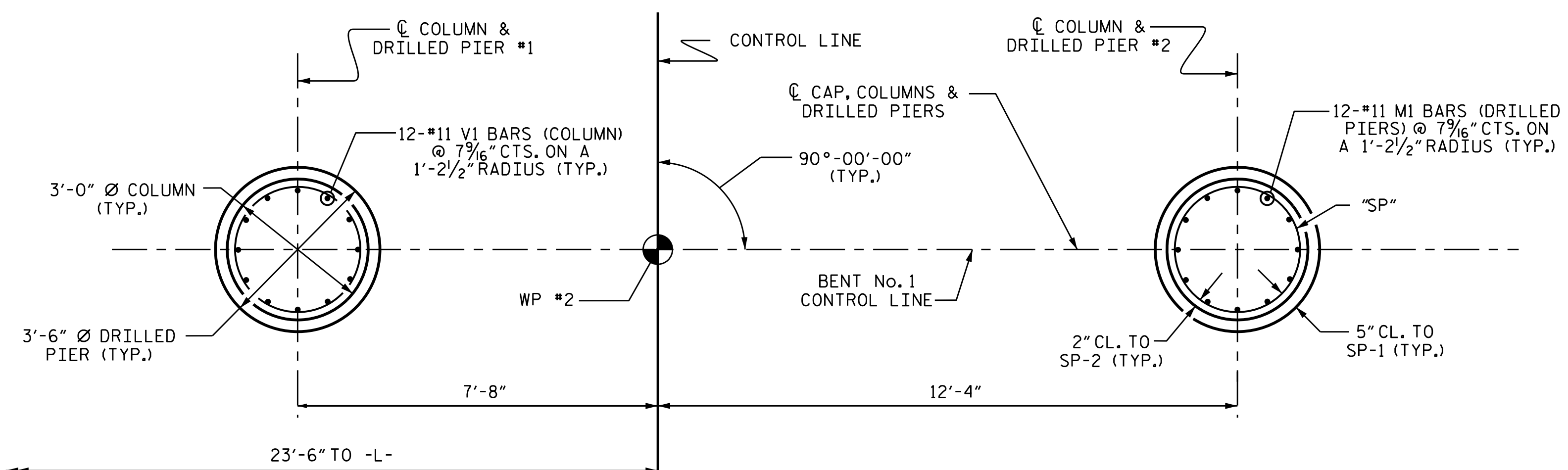
SECTION B-B



RIGHT END VIEW

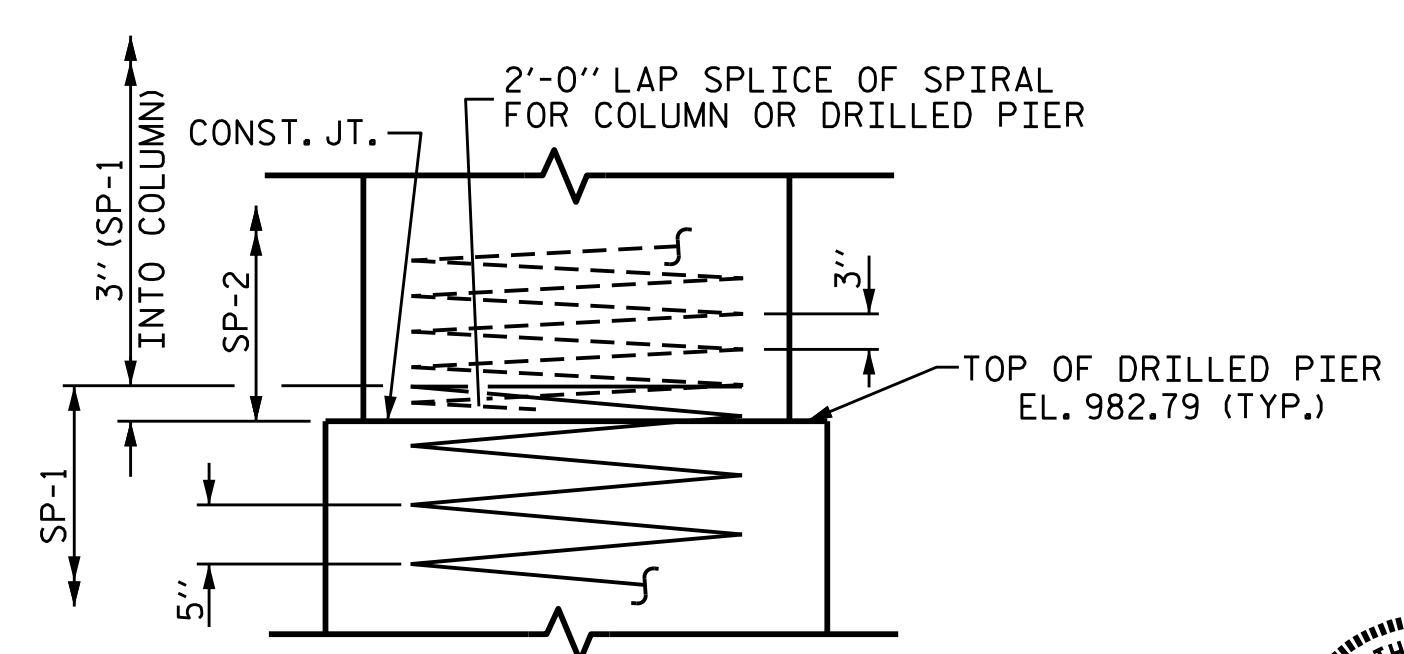


LEFT END VIEW

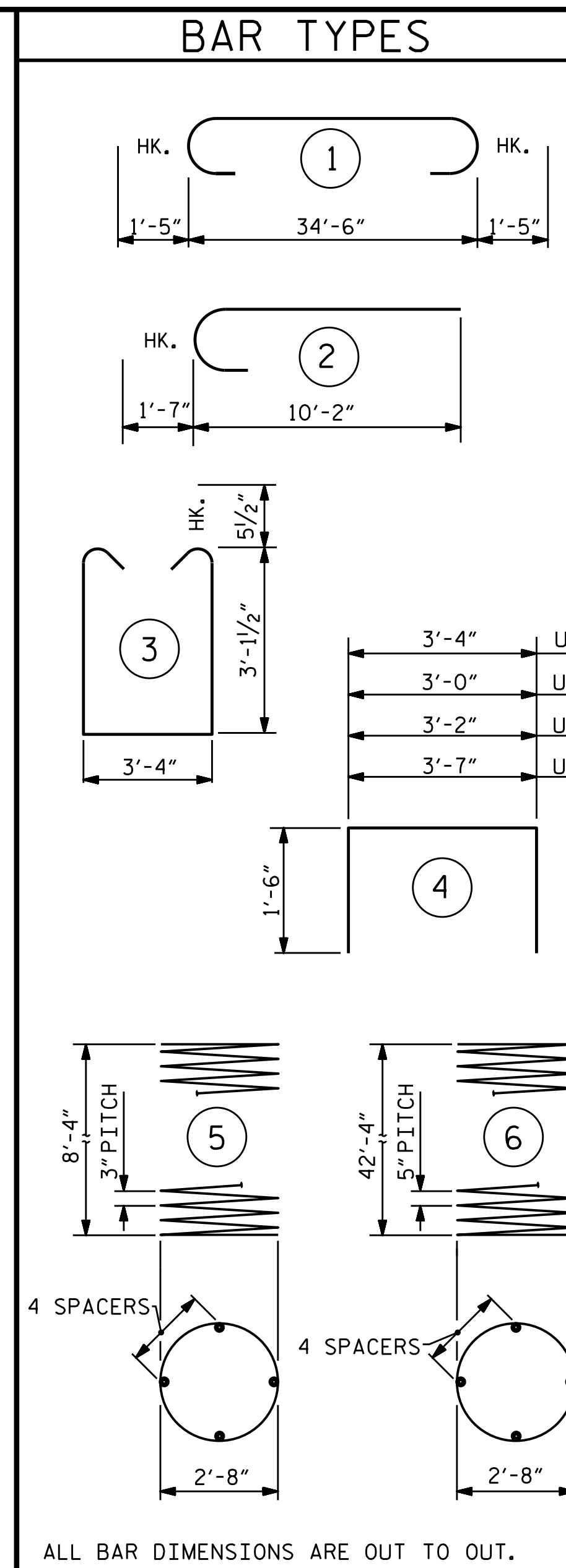


PLAN OF DRILLED PIERS & COLUMNS

(DETAILS ARE TYPICAL FOR EACH COLUMN & DRILLED PIER)



CONSTRUCTION JOINT DETAIL



ALL BAR DIMENSIONS ARE OUT TO OUT.
 * THE SP-1 SPIRAL REINFORCING STEEL SHALL BE W31 OR D-31 COLD DRAWN WIRE OR #5 PLAIN OR DEFORMED BAR.
 ** THE SP-2 SPIRAL REINFORCING STEEL SHALL BE W20 OR D-20 COLD DRAWN WIRE OR #4 PLAIN OR DEFORMED BAR.
 NO SEPARATE PAYMENT WILL BE MADE FOR CSL TUBES. CSL TUBES WILL BE INCLUDED IN THE UNIT PRICE BID FOR DRILLED PIERS.

BILL OF MATERIAL					
BAR	NO.	SIZE	TYPE	LENGTH	WEIGHT
B1	6	#10	STR	34'-8"	895
B2	8	#10	1	37'-4"	1285
B3	6	#5	STR	34'-8"	217
B4	8	#4	STR	13'-7"	73
M1	24	#11	STR	53'-0"	6758
S1	43	#5	3	10'-6"	471
U1	32	#4	4	6'-4"	135
U2	3	#4	4	6'-0"	12
U3	6	#4	4	6'-2"	25
U4	3	#4	4	6'-7"	13
V1	24	#11	2	11'-9"	1498

REINFORCING STEEL = 11382 LBS.
 SP-1 2 * 6 849'-3" 1772
 SP-2 2 ** 5 288'-10" 386

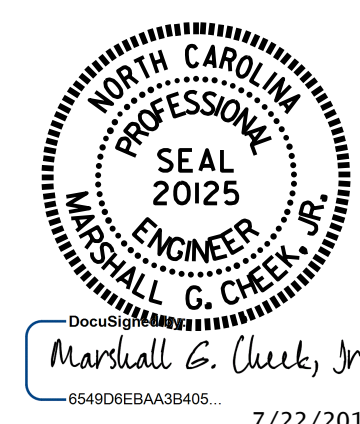
SPIRAL COLUMN REINFORCING STEEL = 2158 LBS.
 CLASS A CONCRETE
 POUR #2 (COLUMNS) = 4.2 C.Y.
 POUR #3 (CAP) = 17.8 C.Y.
 TOTAL CLASS A CONCRETE 22.0 C.Y.

DRILLED PIERS:
 DRILLED PIER CONCRETE
 POUR #1 (DRILLED PIERS) = 30.5 C.Y.
 3'-6" Ø DRILLED PIERS IN SOIL = 60.67 LIN. FT.
 3'-6" Ø DRILLED PIERS NOT IN SOIL = 25.00 LIN. FT.
 PERMANENT STEEL CASING FOR 3'-6" Ø DRILLED PIERS = 25.58 LIN. FT.
 CSL TUBES = 354.67 LIN. FT.
 SPT TESTING 2 EACH
 SID INSPECTIONS 2 EACH

PROJECT NO. R-2603
WILKES COUNTY
 STATION: 117+35.00 -L-

SHEET 2 OF 2

STATE OF NORTH CAROLINA
 DEPARTMENT OF TRANSPORTATION
 RALEIGH
 SUBSTRUCTURE
 BENT No. 1



DRAWN BY: J.K. BOWLES DATE: 12/17/14
 CHECKED BY: H.T. BARBOUR DATE: 2/24/2015
 DESIGN ENGINEER OF RECORD: R.Z. DEAN DATE: 7-15

REVISIONS						SHEET NO.
NO.	BY:	DATE:	NO.	BY:	DATE:	S-39
1			3			TOTAL SHEETS 47
2			4			