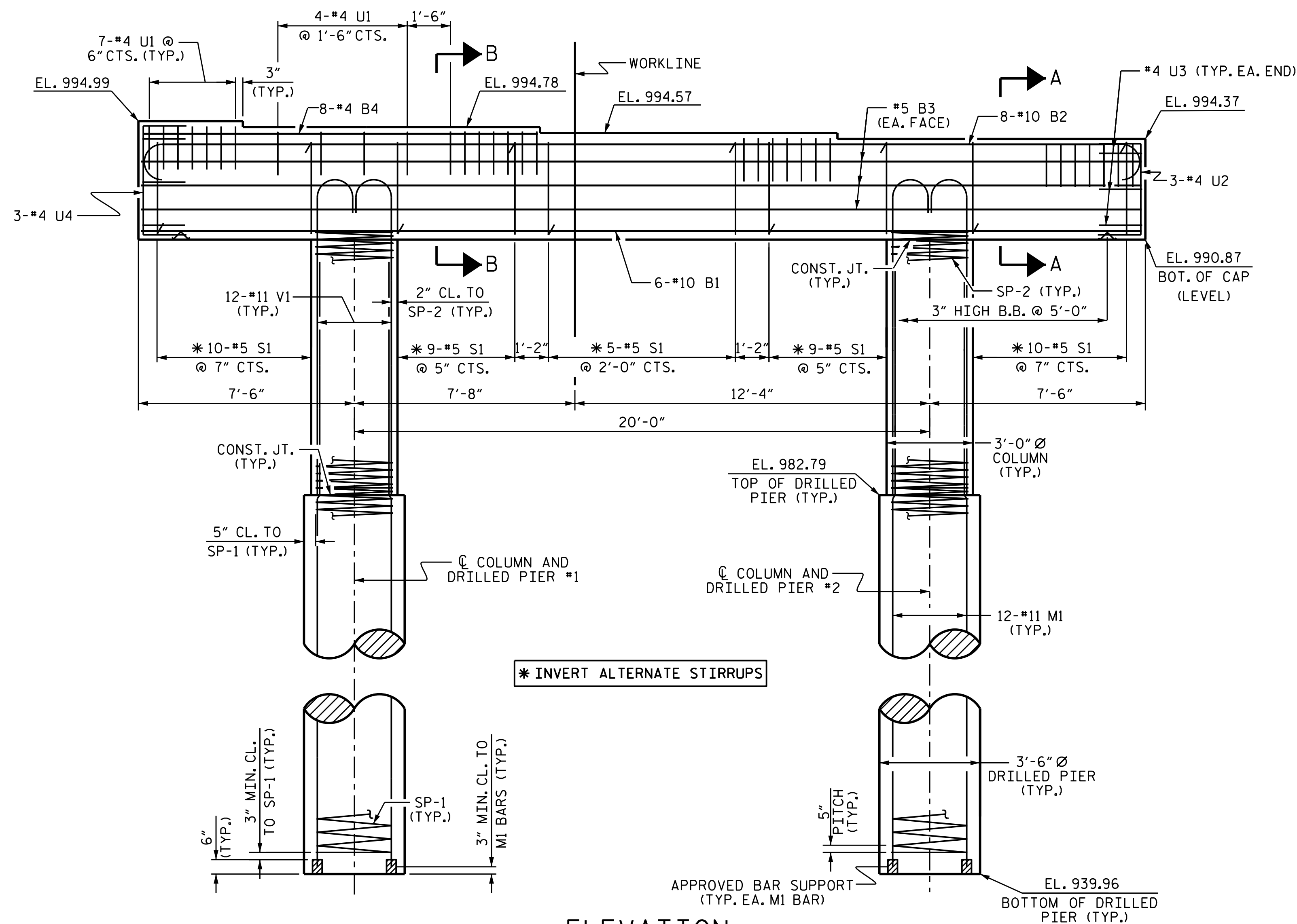
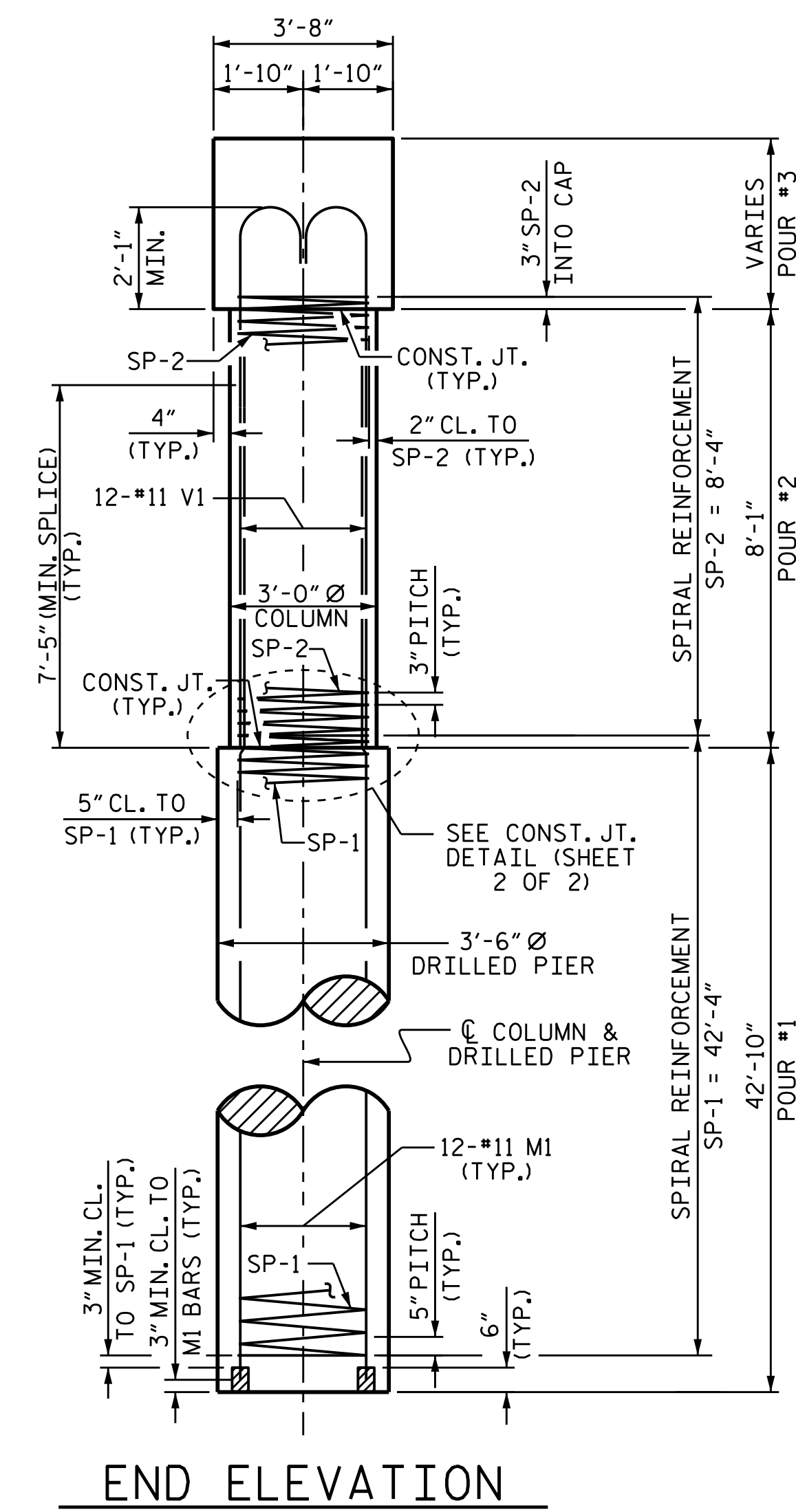


PLAN



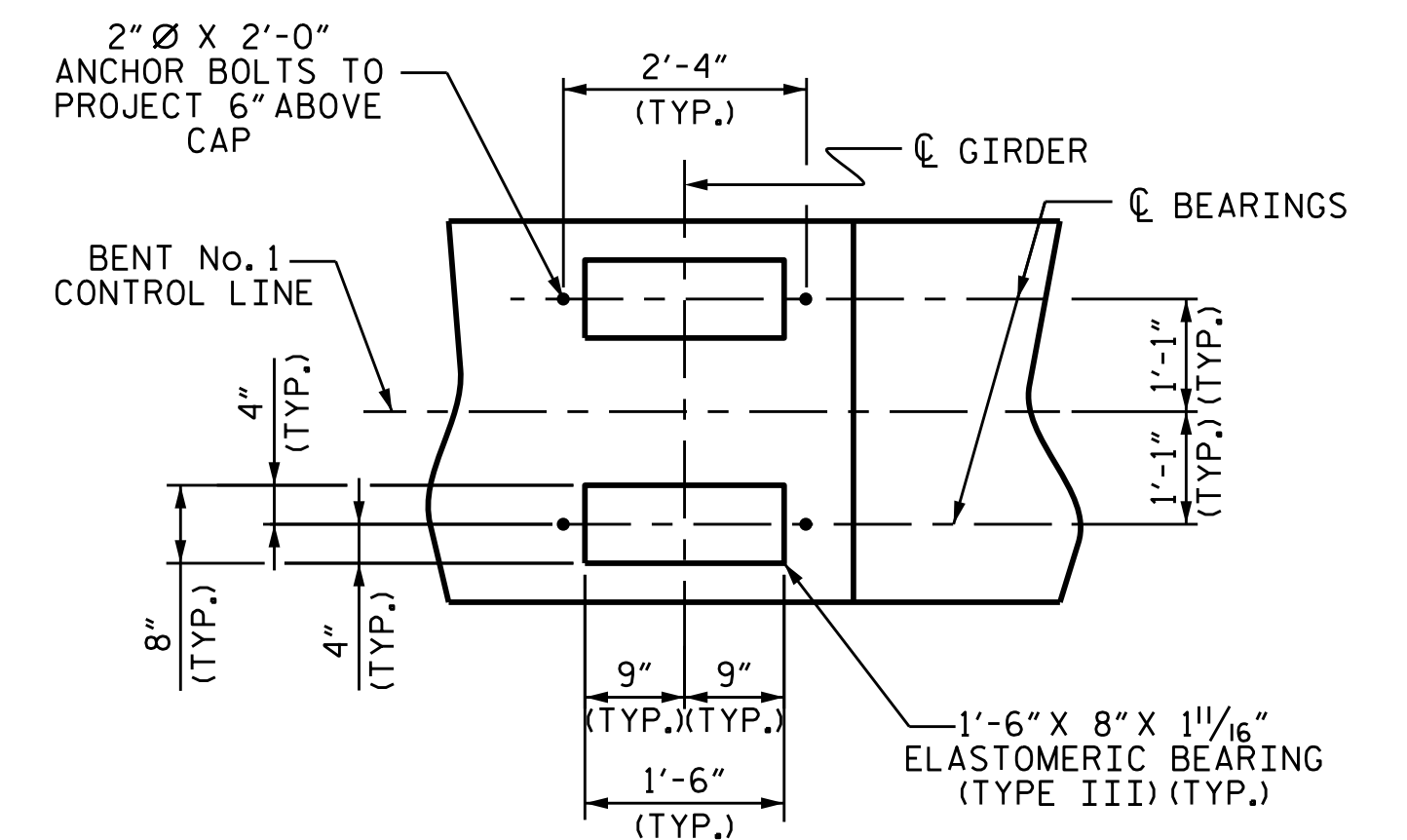
ELEVATION



END ELEVATION

NOTES:

- STIRRUPS IN CAP MAY BE SHIFTED AS NECESSARY TO CLEAR ANCHOR BOLTS.
- HOOKS ON "V" BARS MAY BE TURNED AS NECESSARY FOR PLACING REINFORCING STEEL.
- ALL STEEL IN THE DRILLED PIERS IS INCLUDED IN THE PAY ITEMS FOR "REINFORCING STEEL" AND "SPIRAL COLUMN REINFORCING STEEL."
- THE LOCATION OF THE CONSTRUCTION JOINT IN THE DRILLED PIERS IS BASED ON AN APPROXIMATE GROUND LINE ELEVATION. IF THE CONSTRUCTION JOINT IS ABOVE THE ACTUAL GROUND LINE ELEVATION, THE CONTRACTOR SHALL PLACE THE CONSTRUCTION JOINT 1 FT. BELOW THE GROUND LINE.
- SPLICING OF THE LONGITUDINAL BARS IN THE DRILLED PIERS WILL BE NOT PERMITTED.
- THE CONTRACTOR'S ATTENTION IS CALLED TO THE FACT THAT THE LONGITUDINAL REINFORCEMENT FOR THE DRILLED PIERS IS DETAILED WITH 3 FEET OF EXTRA LENGTH.



DETAIL A

PROJECT NO. R-2603
WILKES COUNTY
 STATION: 117+35.00 -L-
 SHEET 1 OF 2

STATE OF NORTH CAROLINA
 DEPARTMENT OF TRANSPORTATION
 RALEIGH
 SUBSTRUCTURE
 BENT No. 1



Marshall G. Cheek, Jr.
 85460EBA3B405... 7/22/2015

REVISIONS						SHEET NO.
NO.	BY:	DATE:	NO.	BY:	DATE:	S-38
1			3			TOTAL SHEETS
2			4			47

DRAWN BY: J.K. BOWLES DATE: 12/15/14
 CHECKED BY: H.T. BARBOUR DATE: 2/24/15
 DESIGN ENGINEER OF RECORD: R.Z. DEAN DATE: 7-15

21-JUL-2015 08:32
 R:\Structures\Final Plans\Str#2\R2603.SD.B*.dgn
 bngady