

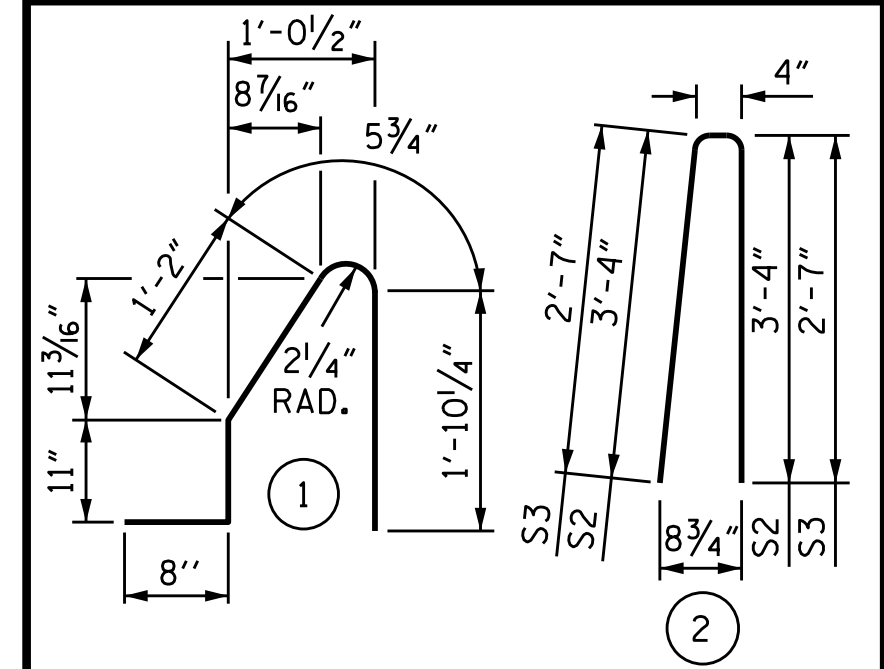
NOTES

BARRIER RAIL IN A CONTINUOUS UNIT SHALL NOT BE CAST UNTIL ALL SLAB CONCRETE IN THE UNIT HAS BEEN CAST AND HAS REACHED A MINIMUM COMPRESSIVE STRENGTH OF 3,000 PSI.

ALL REINFORCING STEEL IN BARRIER RAIL SHALL BE EPOXY COATED.

GROOVED CONTRACTION JOINTS, 1/2" IN DEPTH, SHALL BE TOOLED IN ALL EXPOSED FACES OF THE BARRIER RAIL AND IN ACCORDANCE WITH ARTICLE 825-10(B) OF THE STANDARD SPECIFICATIONS, THE CONTRACTION JOINT SHALL BE LOCATED AT EACH THIRD POINT BETWEEN BARRIER RAIL EXPANSION JOINTS. ONLY ONE CONTRACTION JOINT IS REQUIRED AT MIDPOINT OF BARRIER RAIL SEGMENTS LESS THAN 20 FEET IN LENGTH AND NO CONTRACTION JOINTS ARE REQUIRED FOR THOSE SEGMENTS LESS THAN 10 FEET IN LENGTH.

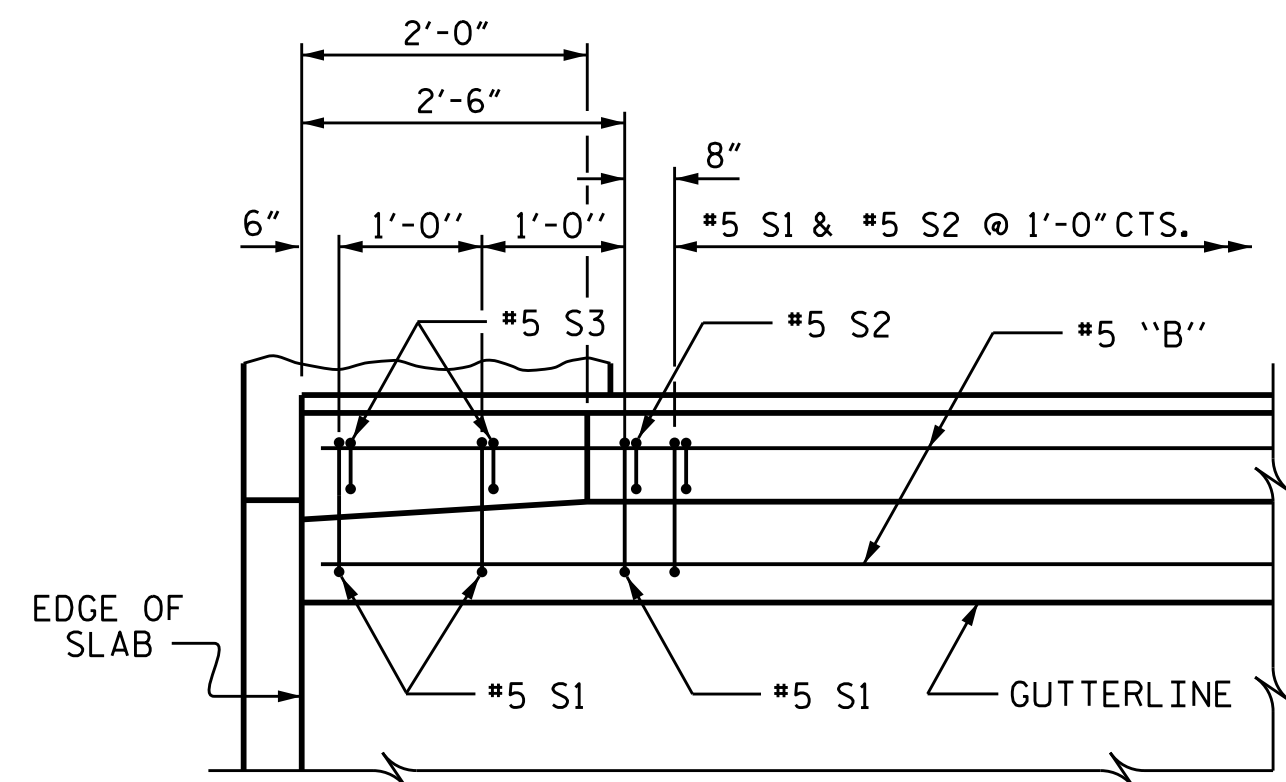
BAR TYPES



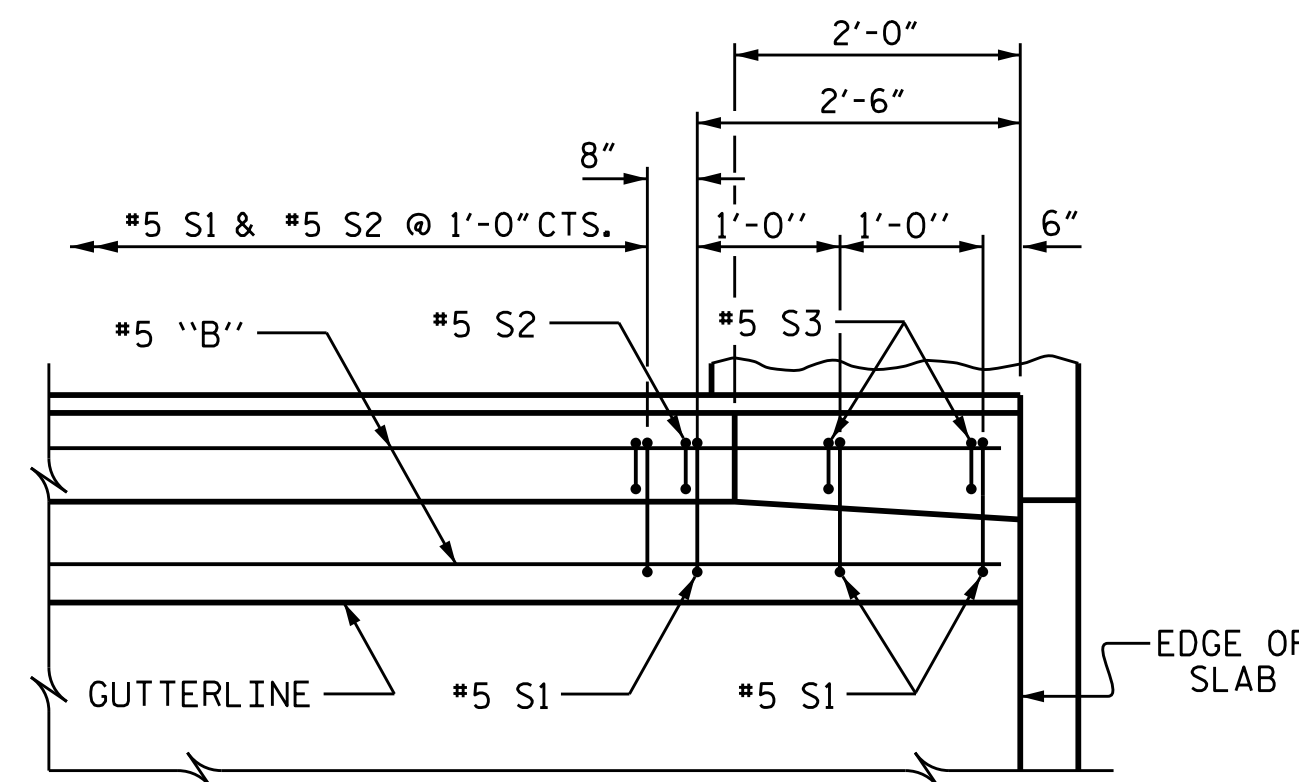
ALL BAR DIMENSIONS ARE OUT TO OUT

BILL OF MATERIAL

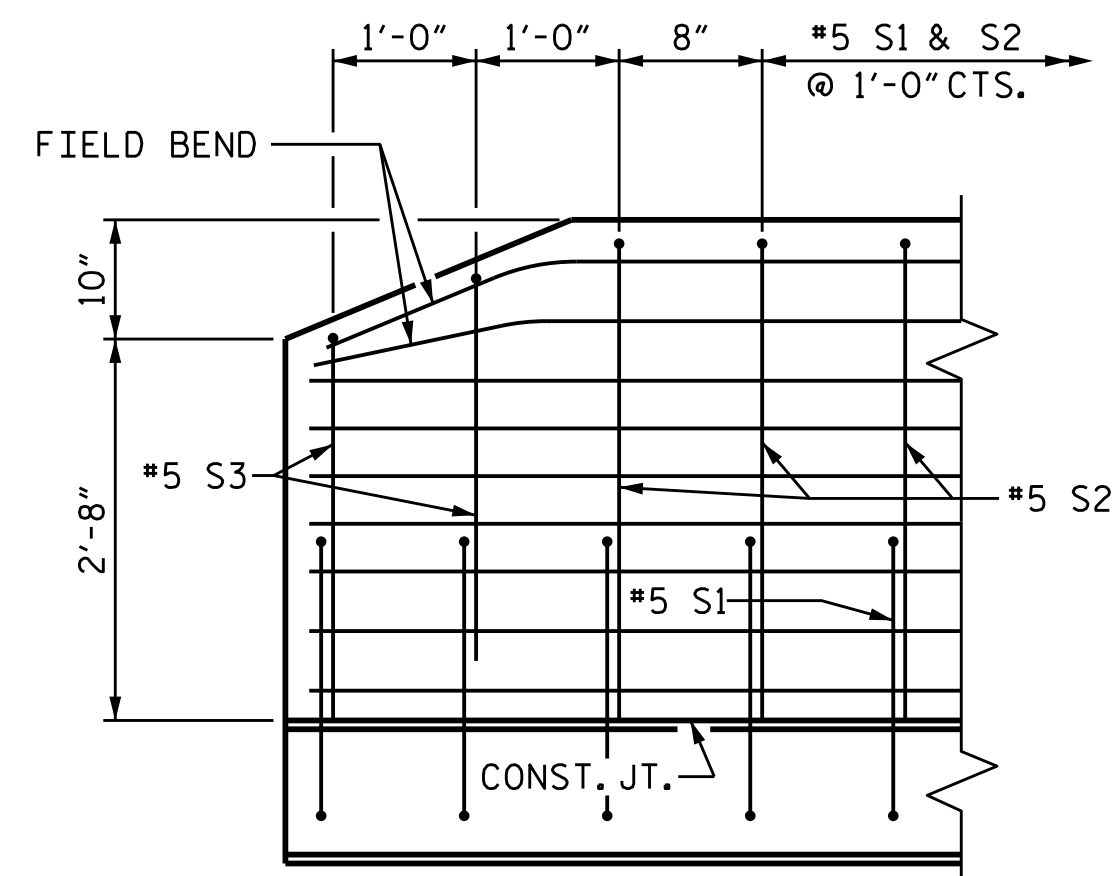
BARRIER RAIL ONLY					
BAR NO.	NO.	SIZE	TYPE	LENGTH	WEIGHT
* B1	11	#5	STR	17'-1"	196
* B2	55	#5	STR	21'-3"	1219
* B3	11	#5	STR	22'-1"	253
* S1	149	#5	1	5'-1"	790
* S2	145	#5	2	7'-0"	1059
* S3	4	#5	2	5'-6"	23
* EPOXY COATED REINFORCING STEEL				LBS.	3540
CLASS AA CONCRETE				C.Y.	20.2
CONCRETE BARRIER RAIL				LIN. FT.	148.33



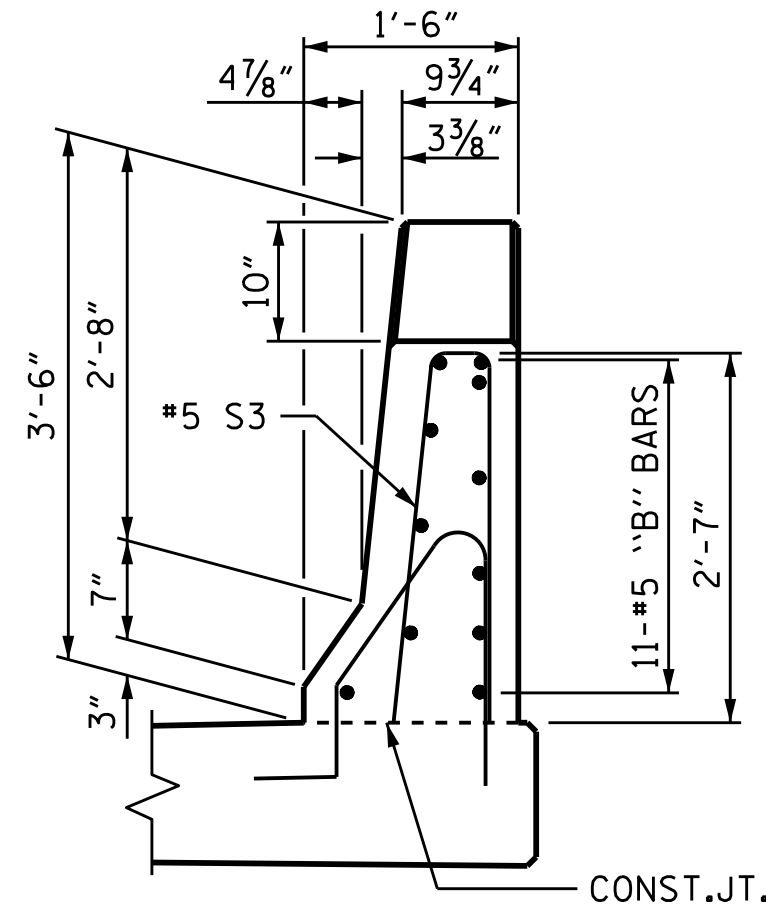
PLAN @ END BENT No. 1



PLAN @ END BENT No. 2



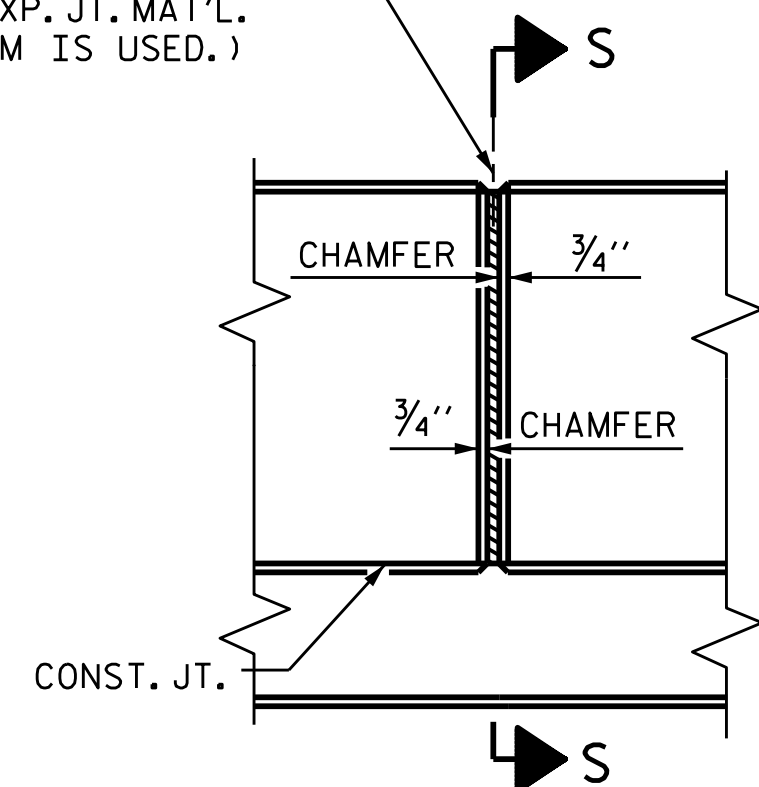
SIDE VIEW



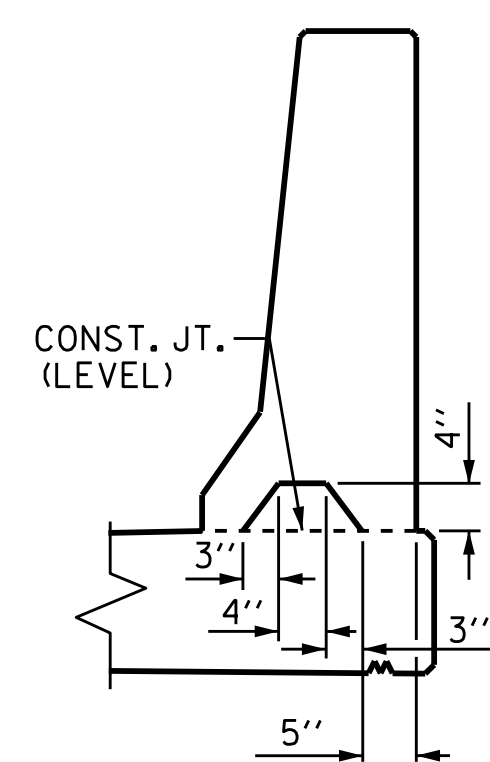
END VIEW

END OF RAIL DETAILS

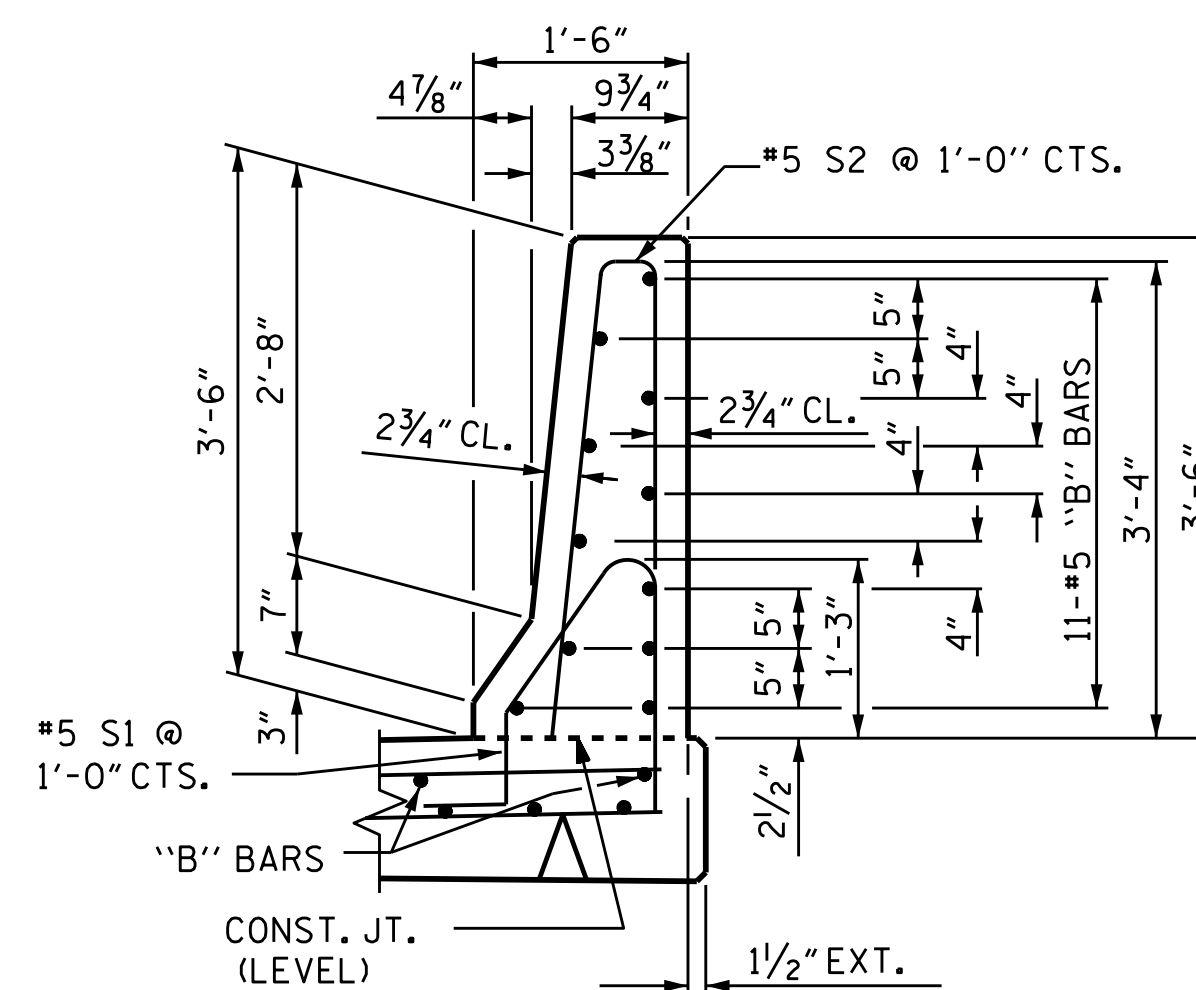
1/2" EXP. JT. MAT'L HELD IN PLACE WITH GALVANIZED NAILS.
(NOTE: OMIT EXP. JT. MAT'L. WHEN SLIP FORM IS USED.)



ELEVATION AT EXPANSION JOINTS



SECTION S-S
AT DAM IN OPEN JOINT
(THIS IS TO BE USED ONLY WHEN SLIP FORM IS USED)

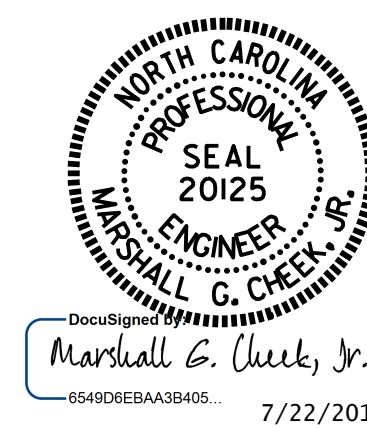


SECTION THRU RAIL

PROJECT NO. R-2603
WILKES COUNTY
 STATION: 117+35.00 -L-

SHEET 2 OF 2

STATE OF NORTH CAROLINA
 DEPARTMENT OF TRANSPORTATION
 RALEIGH
 STANDARD
 CONCRETE
 BARRIER RAIL



REVISIONS						SHEET NO.
NO.	BY:	DATE:	NO.	BY:	DATE:	S-26
1			3			TOTAL SHEETS
2			4			47

ASSEMBLED BY : D. A. GLADDEN	DATE : 7-17-13	
CHECKED BY : H. T. BARBOUR	DATE : 8-13	
DRAWN BY : ARB 5/87	REV. 10/1/11	MAA/GM
CHECKED BY : SJD 9/87	REV. 7/12	MAA/GM
	REV. 6/13	MAA/GM