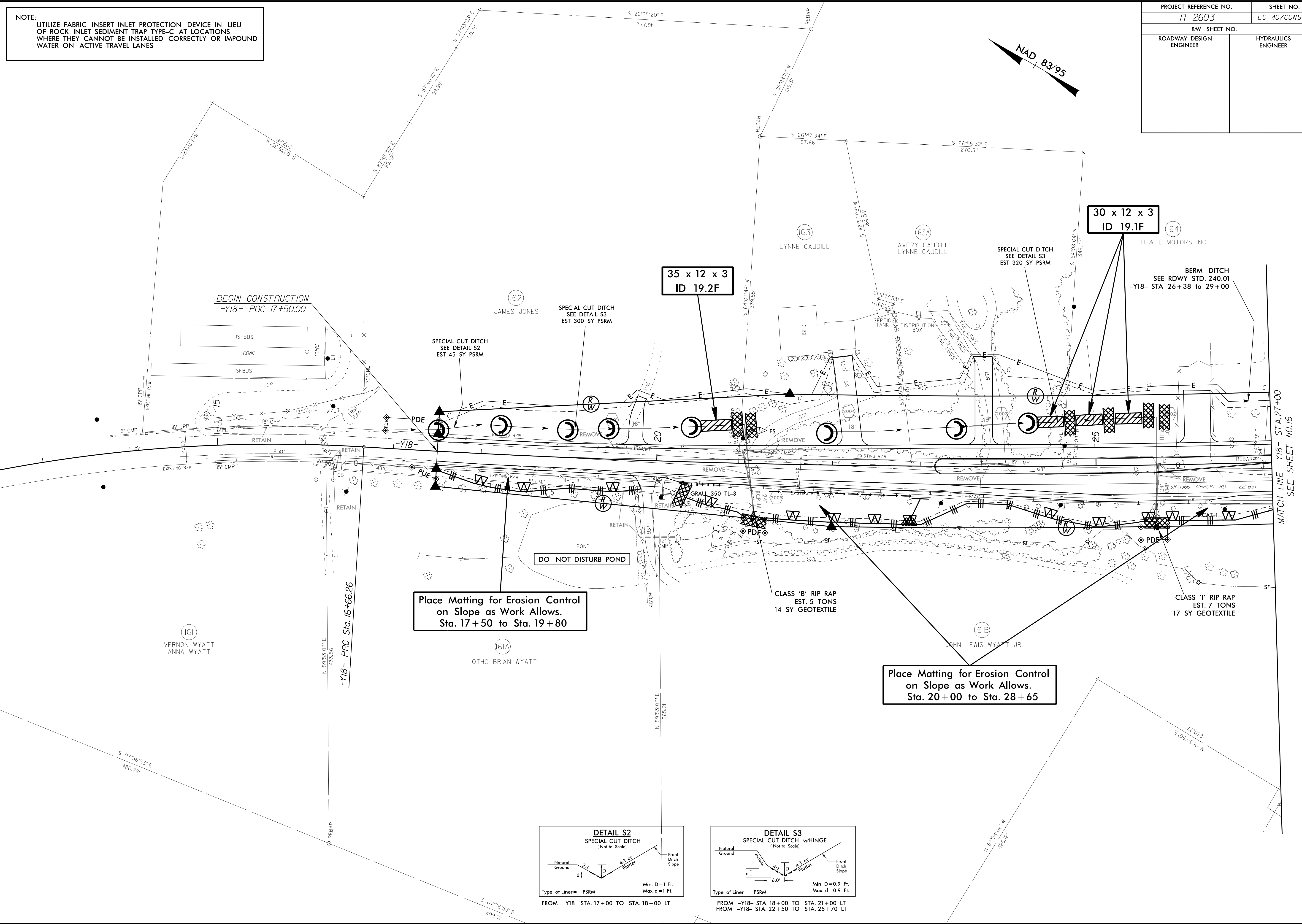
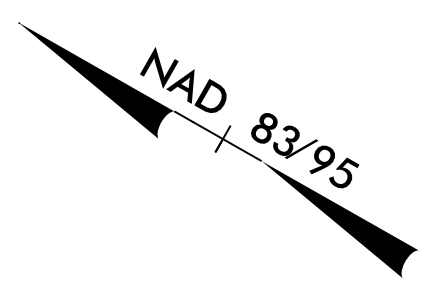


PROJECT REFERENCE NO. R-2603	SHEET NO. EC-40/CONST.19
RW SHEET NO.	
ROADWAY DESIGN ENGINEER	HYDRAULICS ENGINEER

NOTE:
UTILIZE FABRIC INSERT INLET PROTECTION DEVICE IN LIEU OF ROCK INLET SEDIMENT TRAP TYPE-C AT LOCATIONS WHERE THEY CANNOT BE INSTALLED CORRECTLY OR IMPOUND WATER ON ACTIVE TRAVEL LANES



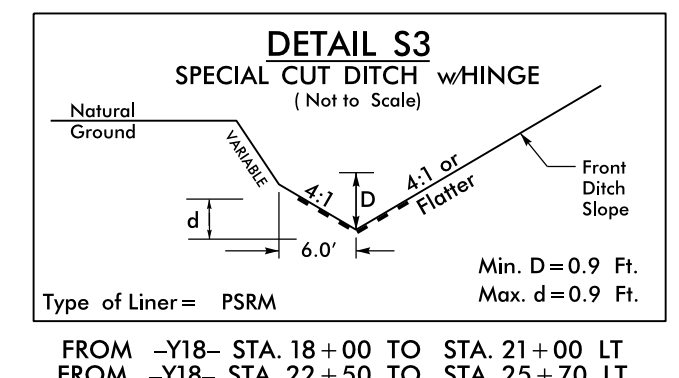
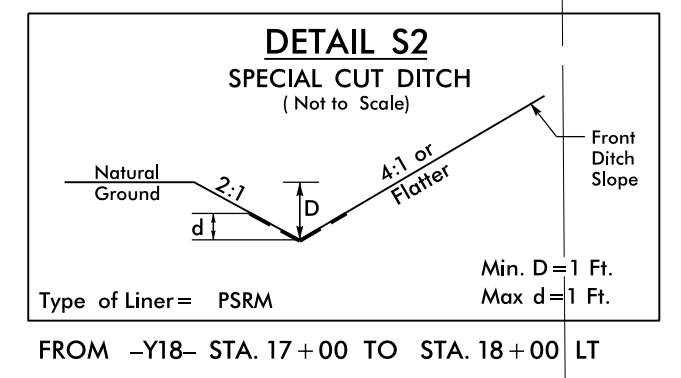
BEGIN CONSTRUCTION
-Y18- POC 17+50.00

35 x 12 x 3
ID 19.2F

30 x 12 x 3
ID 19.1F

Place Matting for Erosion Control
on Slope as Work Allows.
Sta. 17+50 to Sta. 19+80

Place Matting for Erosion Control
on Slope as Work Allows.
Sta. 20+00 to Sta. 28+65



8/17/99
 94 JUN-2016 15:03
 R:\env\form\ec\19\2603-EC.psh19.dgn
 R:\env\form\ec\19\2603-EC.psh19.dgn
 R:\env\form\ec\19\2603-EC.psh19.dgn

MATCH LINE -Y18- STA. 27+00
 SEE SHEET NO. 16