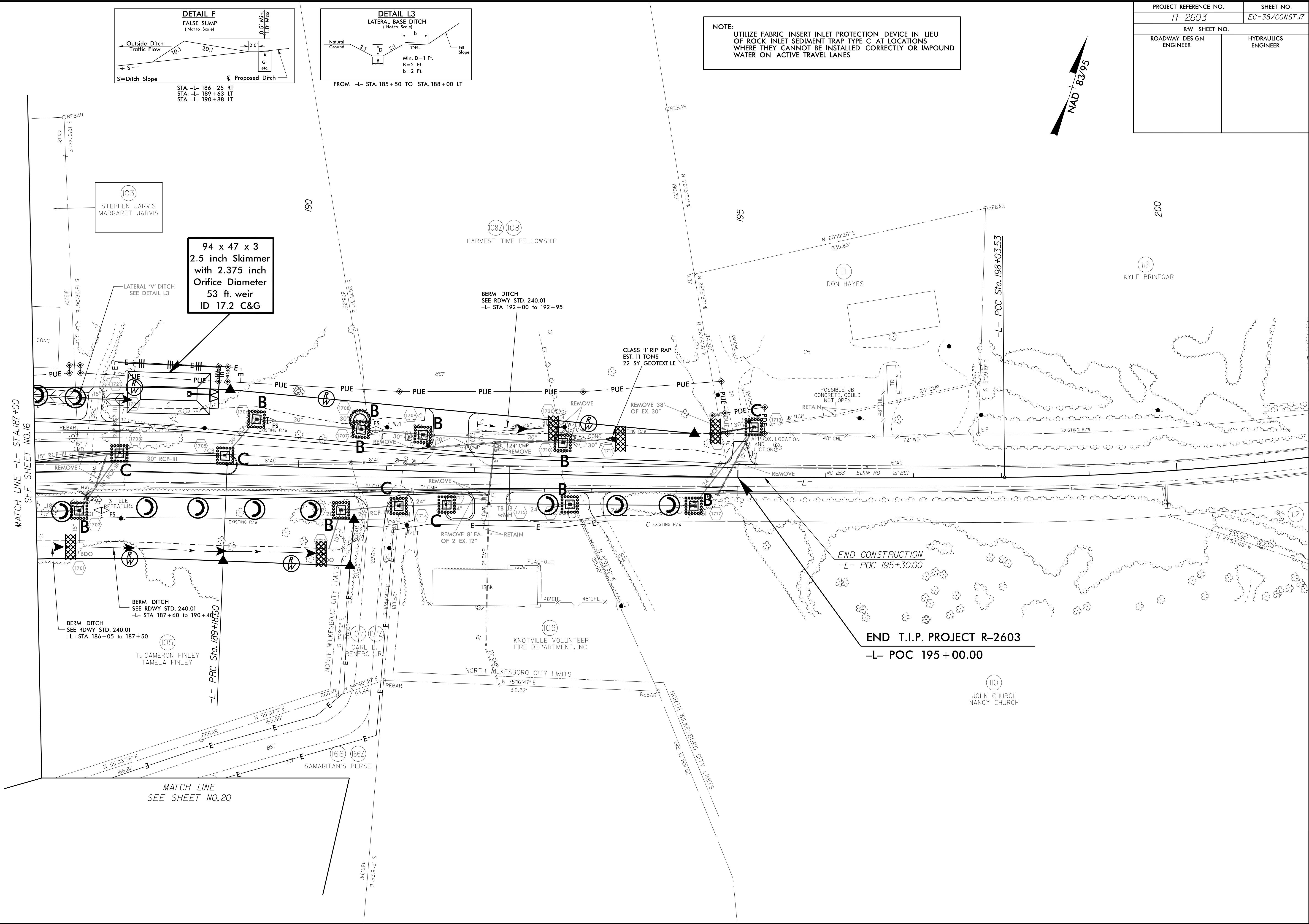
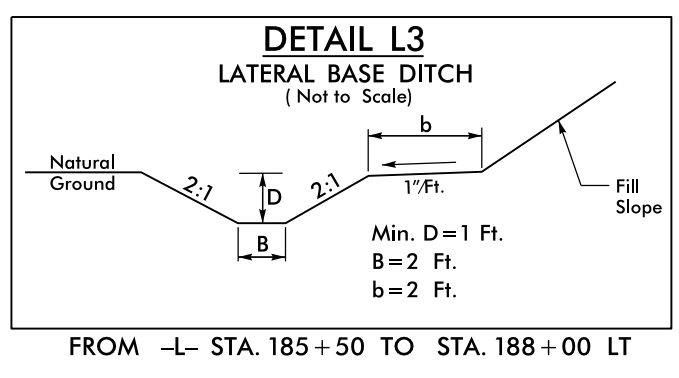
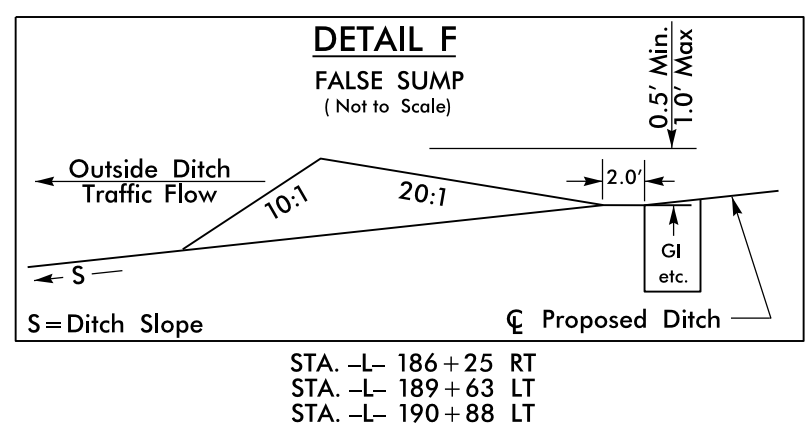
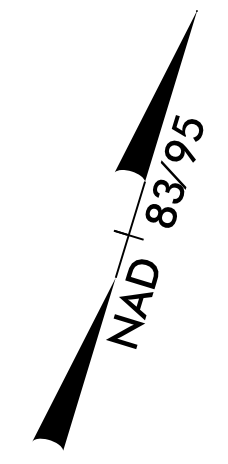


PROJECT REFERENCE NO. R-2603	SHEET NO. EC-38/CONST.17
RW SHEET NO.	
ROADWAY DESIGN ENGINEER	HYDRAULICS ENGINEER

NOTE:  
UTILIZE FABRIC INSERT INLET PROTECTION DEVICE IN LIEU OF ROCK INLET SEDIMENT TRAP TYPE-C AT LOCATIONS WHERE THEY CANNOT BE INSTALLED CORRECTLY OR IMPOUND WATER ON ACTIVE TRAVEL LANES



8/17/99  
 04 JUN 2016 14:54  
 R:\env\form\ec\psh17.dgn  
 R:\env\form\ec\psh17.dgn  
 R:\env\form\ec\psh17.dgn  
 R:\env\form\ec\psh17.dgn