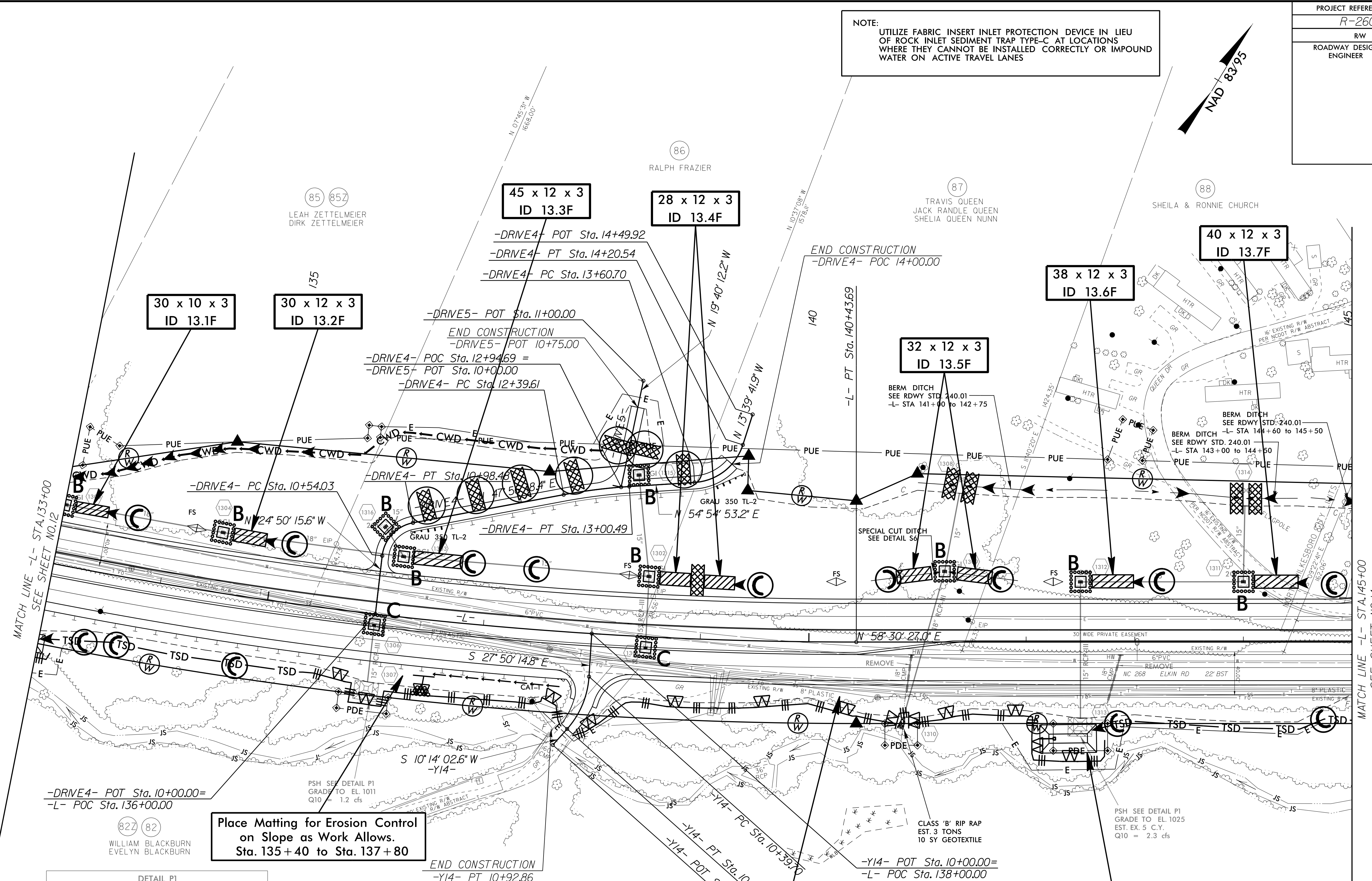
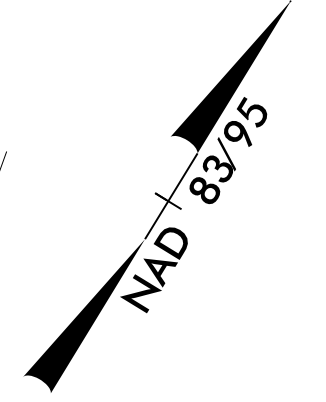


NOTE:
UTILIZE FABRIC INSERT INLET PROTECTION DEVICE IN LIEU OF ROCK INLET SEDIMENT TRAP TYPE-C AT LOCATIONS WHERE THEY CANNOT BE INSTALLED CORRECTLY OR IMPOUND WATER ON ACTIVE TRAVEL LANES



Place Matting for Erosion Control on Slope as Work Allows. Sta. 135+40 to Sta. 137+80

Place Matting for Erosion Control on Slope as Work Allows. Sta. 138+00 to Sta. 145+00

52 x 26 x 3 1.5 inch Skimmer with 1 inch Orifice Diameter 18 ft. weir ID 13.1 C&G

