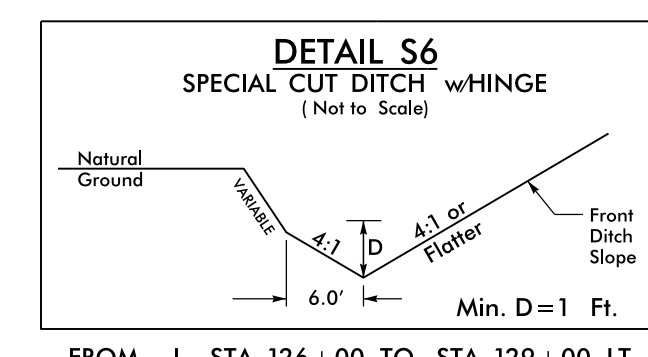
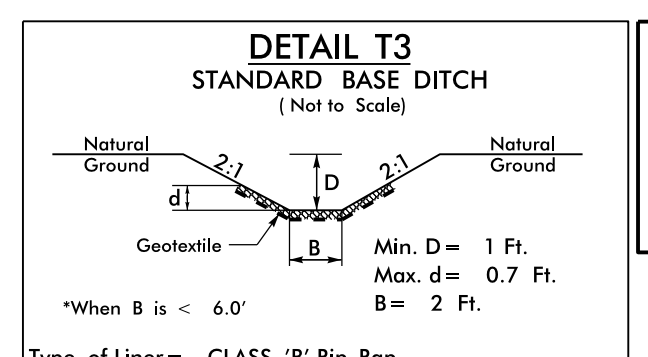


PROJECT REFERENCE NO. R-2603	SHEET NO. EC-33/CONST.12
RW SHEET NO.	
ROADWAY DESIGN ENGINEER	HYDRAULICS ENGINEER

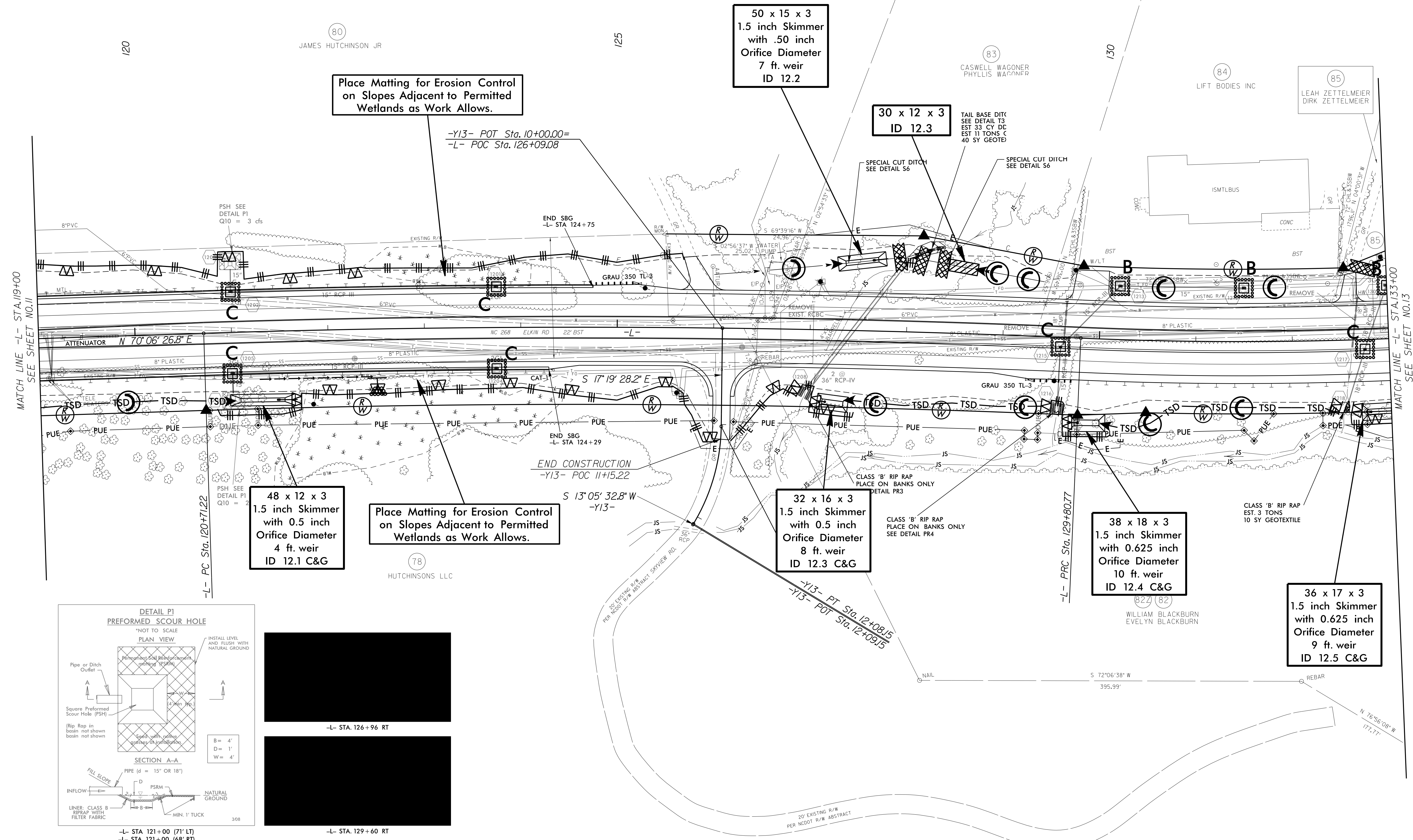
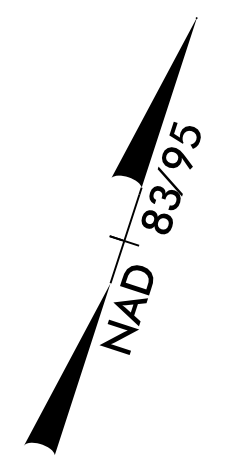


FROM -L- STA. 126+00 TO STA. 129+00 LT



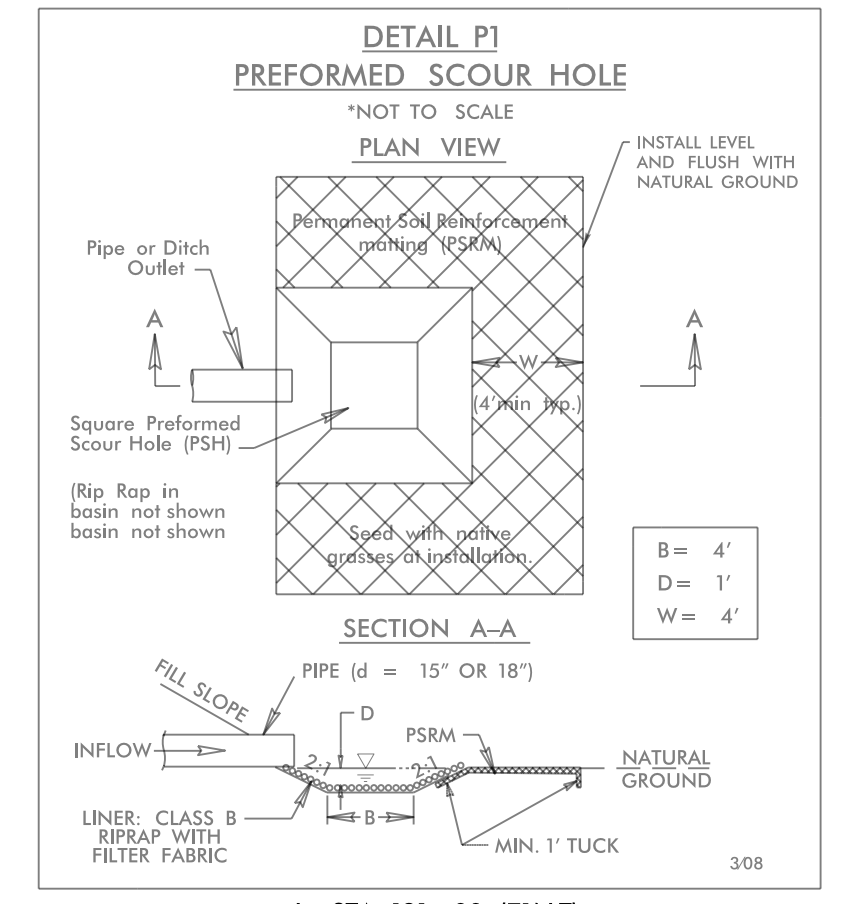
FROM -L- STA. 128+00 (77' LT) TO 128+37 (90' LT)

NOTE:
UTILIZE FABRIC INSERT INLET PROTECTION DEVICE IN LIEU OF ROCK INLET SEDIMENT TRAP TYPE-C AT LOCATIONS WHERE THEY CANNOT BE INSTALLED CORRECTLY OR IMPOUND WATER ON ACTIVE TRAVEL LANES

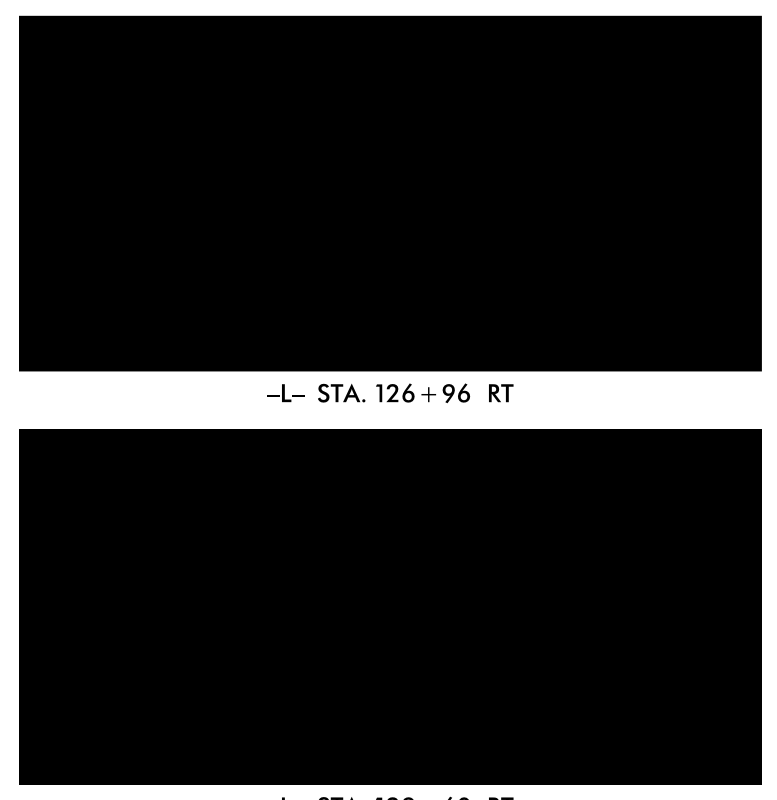


MATCH LINE -L- STA. 119+00
SEE SHEET NO. 11

MATCH LINE -L- STA. 133+00
SEE SHEET NO. 13



-L- STA 121+00 (71' LT)
-L- STA 121+00 (68' RT)



8/17/99
94 JUN-2015 12:19
R:\env\form\ec\12\2603\12\2603-EC.psh12.dgn
R:\env\form\ec\12\2603\12\2603-EC.psh12.dgn
R:\env\form\ec\12\2603\12\2603-EC.psh12.dgn