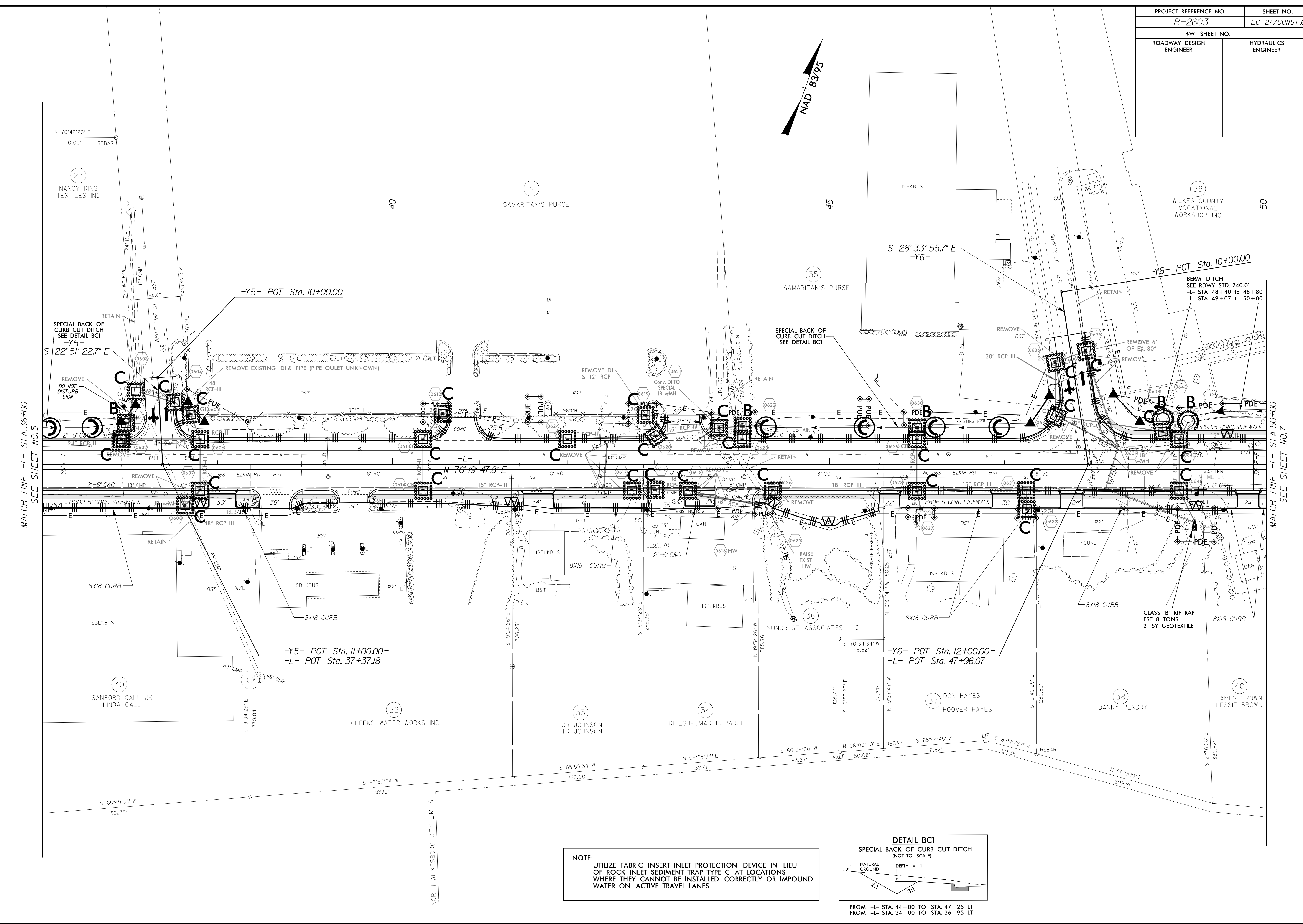
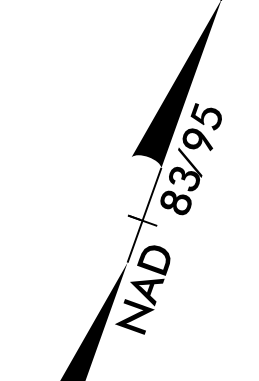


PROJECT REFERENCE NO. R-2603	SHEET NO. EC-27/CONST.6
RW SHEET NO.	
ROADWAY DESIGN ENGINEER	HYDRAULICS ENGINEER

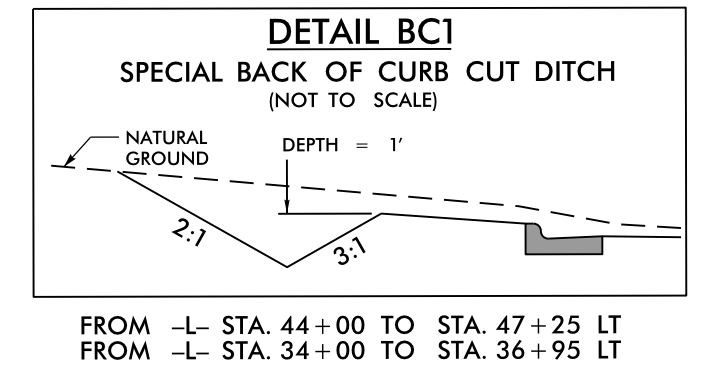
8/17/99



MATCH LINE -L- STA. 36+00
SEE SHEET NO.5

MATCH LINE -L- STA. 50+00
SEE SHEET NO.7

NOTE:
UTILIZE FABRIC INSERT INLET PROTECTION DEVICE IN LIEU OF ROCK INLET SEDIMENT TRAP TYPE-C AT LOCATIONS WHERE THEY CANNOT BE INSTALLED CORRECTLY OR IMPOUND WATER ON ACTIVE TRAVEL LANES



04 JUN 2015 10:23
R:\REVISED\PROJECTS\2603-EC.psh06.dgn
R:\REVISED\PROJECTS\2603-EC.psh06.dgn
R:\REVISED\PROJECTS\2603-EC.psh06.dgn