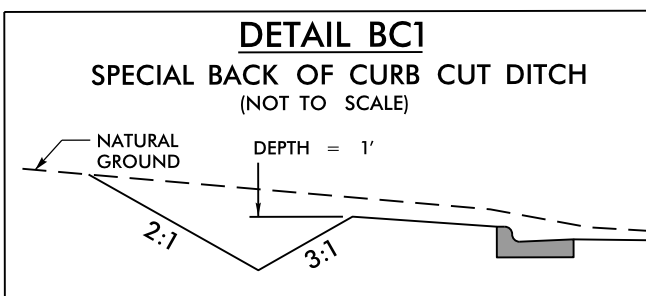
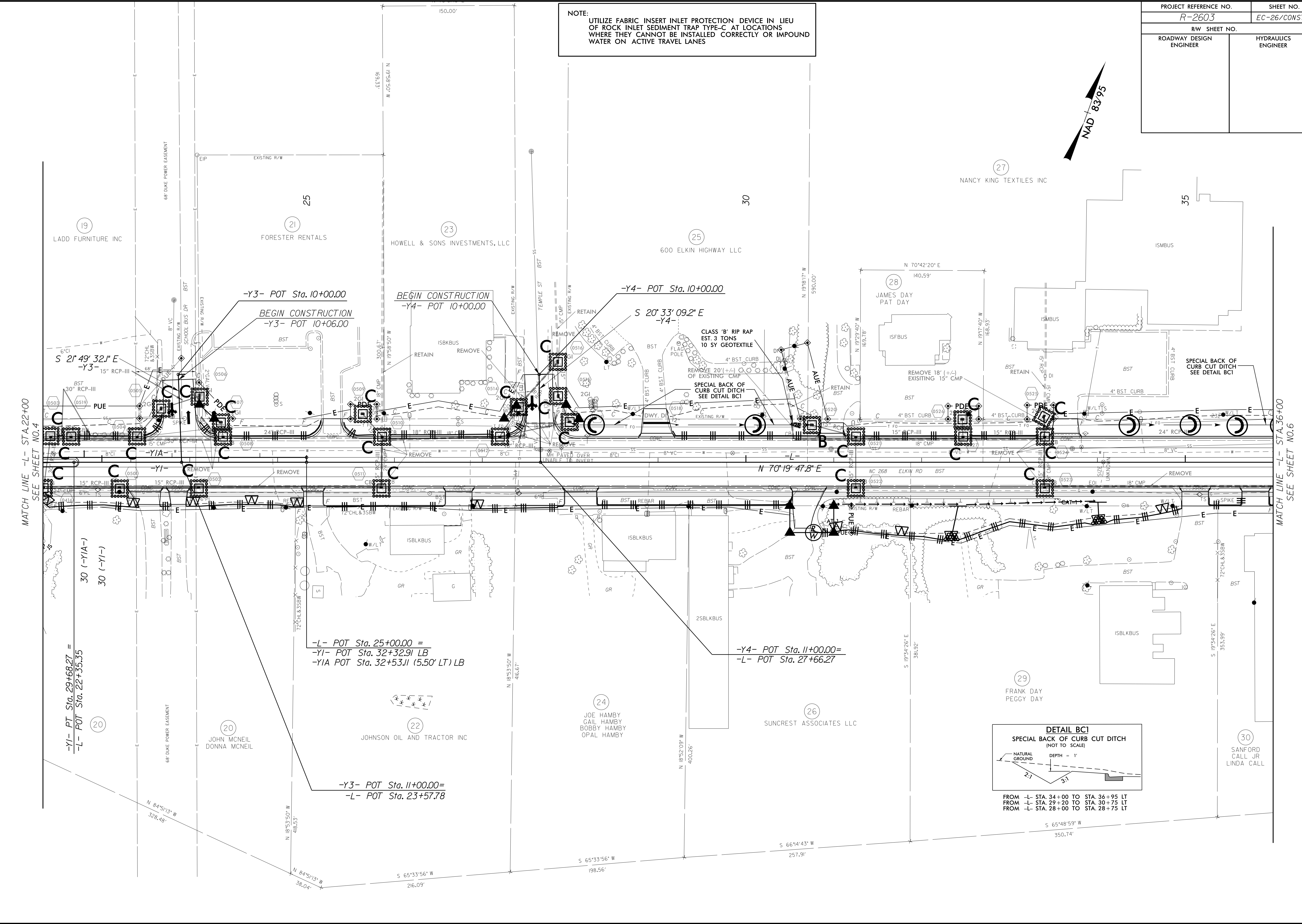
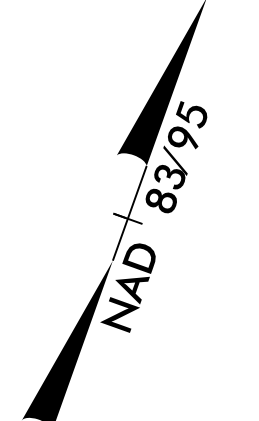


PROJECT REFERENCE NO. <i>R-2603</i>	SHEET NO. <i>EC-26/CONST.5</i>
RW SHEET NO.	
ROADWAY DESIGN ENGINEER	HYDRAULICS ENGINEER

NOTE:  
UTILIZE FABRIC INSERT INLET PROTECTION DEVICE IN LIEU OF ROCK INLET SEDIMENT TRAP TYPE-C AT LOCATIONS WHERE THEY CANNOT BE INSTALLED CORRECTLY OR IMPOUND WATER ON ACTIVE TRAVEL LANES



FROM -L- STA. 34+00 TO STA. 36+95 LT  
 FROM -L- STA. 29+20 TO STA. 30+75 LT  
 FROM -L- STA. 28+00 TO STA. 28+75 LT

MATCH LINE -L- STA. 22+00  
SEE SHEET NO. 4

MATCH LINE -L- STA. 36+00  
SEE SHEET NO. 6

8/17/99  
 94 JUN-2015 10:26  
 R:\New\Projects\2603-EC.pst\05.dgn  
 R:\New\Projects\2603-EC.pst\05.dgn  
 R:\New\Projects\2603-EC.pst\05.dgn