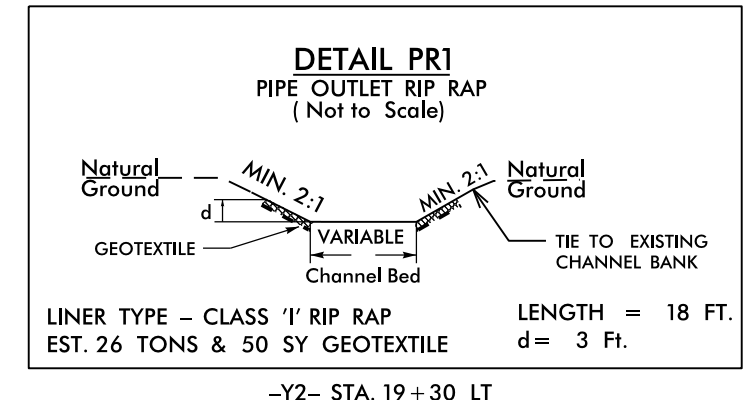
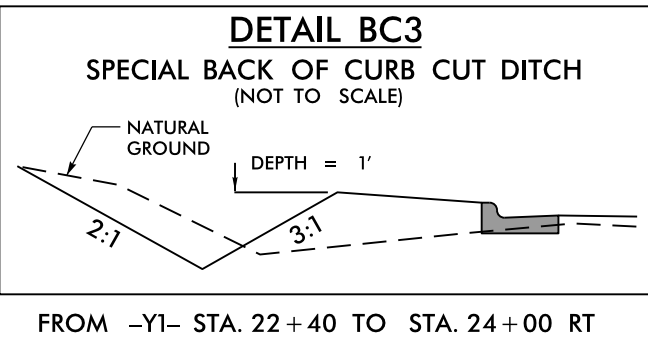


PROJECT REFERENCE NO.	SHEET NO.
R-2603	EC-25/CONST.4
RW SHEET NO.	
ROADWAY DESIGN ENGINEER	HYDRAULICS ENGINEER

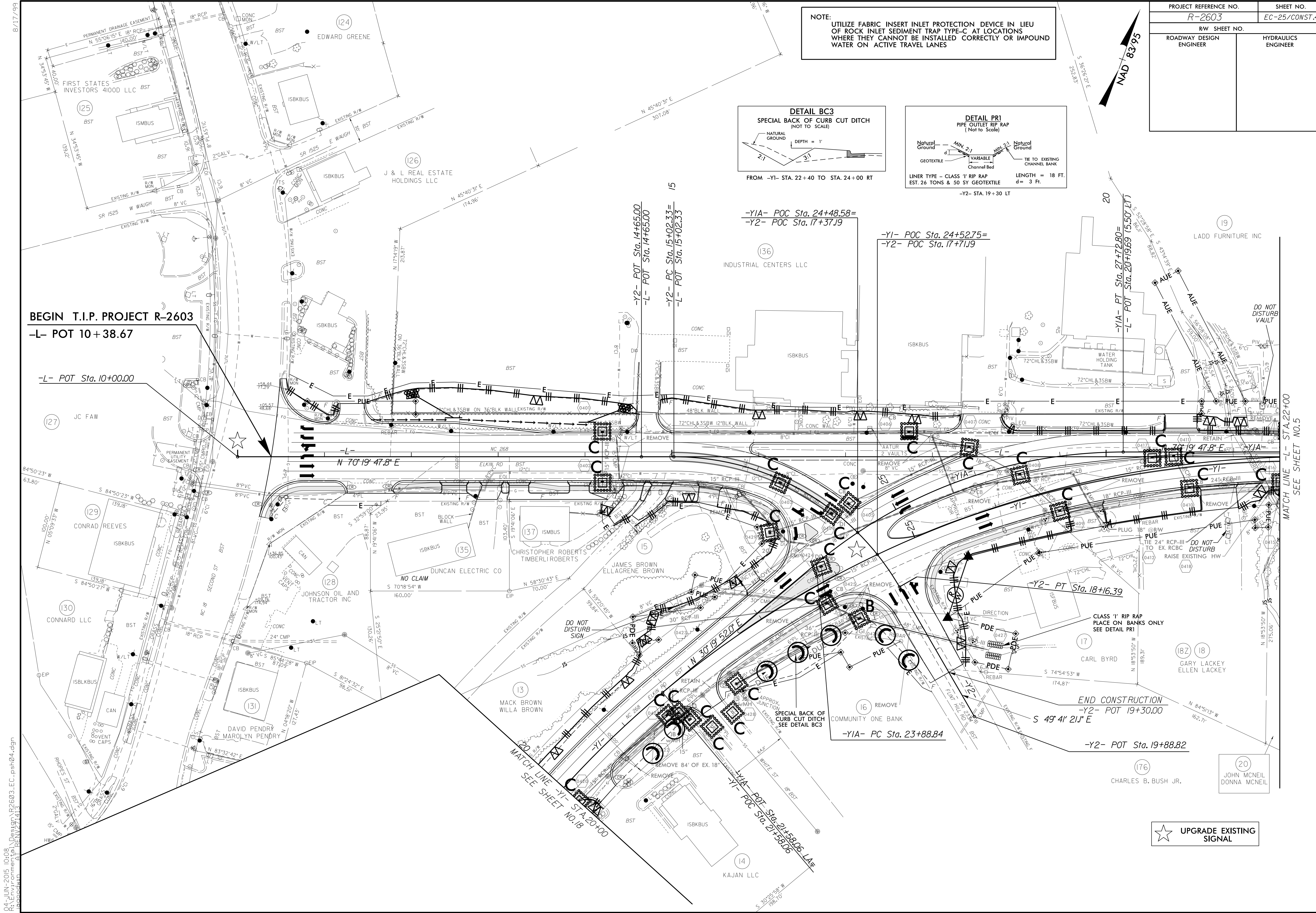
NOTE:
UTILIZE FABRIC INSERT INLET PROTECTION DEVICE IN LIEU OF ROCK INLET SEDIMENT TRAP TYPE-C AT LOCATIONS WHERE THEY CANNOT BE INSTALLED CORRECTLY OR IMPOUND WATER ON ACTIVE TRAVEL LANES



BEGIN T.I.P. PROJECT R-2603

-L- POT 10+38.67

-L- POT Sta. 10+00.00



94 JUN-2015 10:08
 R:\New\Projects\2603\EC-25\Sheet04.dgn
 R:\New\Projects\2603\EC-25\Sheet04.dgn
 R:\New\Projects\2603\EC-25\Sheet04.dgn

MATCH LINE -L- STA. 22+00
 SEE SHEET NO.5

