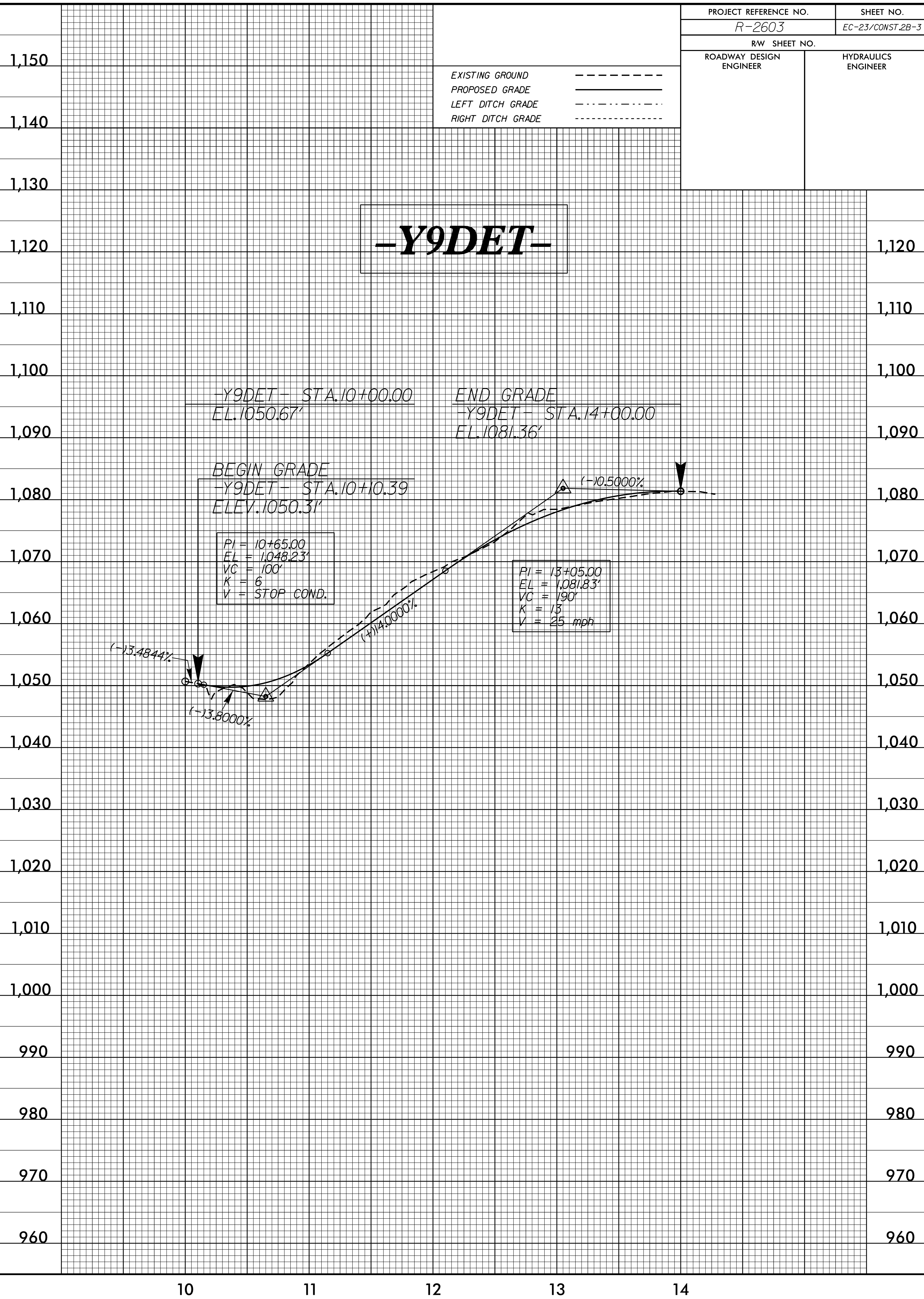
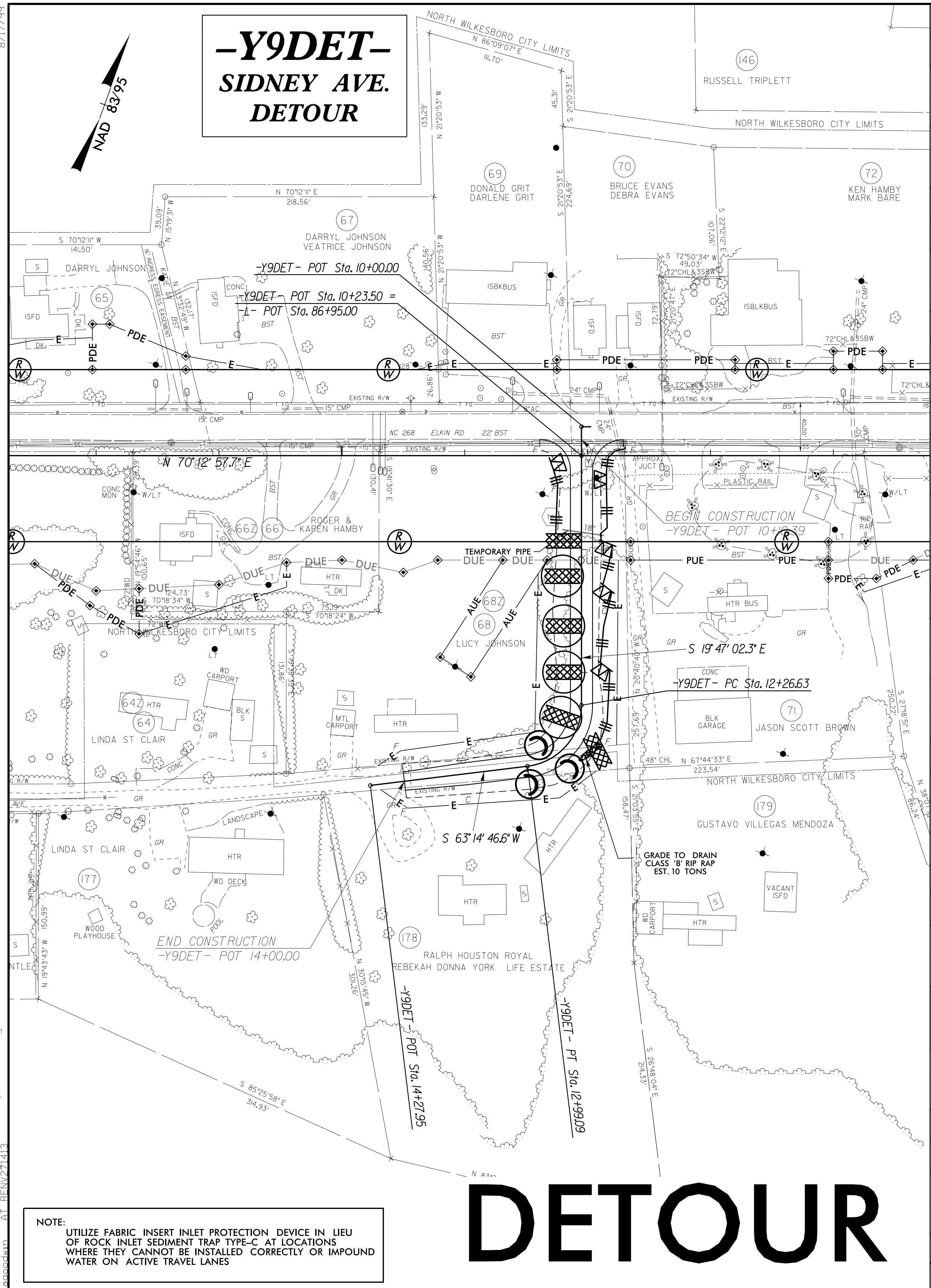
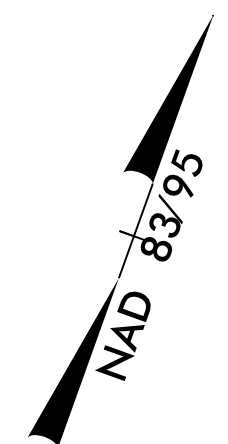


PROJECT REFERENCE NO. <i>R-2603</i>	SHEET NO. <i>EC-23/CONST.2B-3</i>
RW SHEET NO.	
ROADWAY DESIGN ENGINEER	HYDRAULICS ENGINEER

**-Y9DET-
SIDNEY AVE.
DETOUR**



NOTE:
UTILIZE FABRIC INSERT INLET PROTECTION DEVICE IN LIEU OF ROCK INLET SEDIMENT TRAP TYPE-C AT LOCATIONS WHERE THEY CANNOT BE INSTALLED CORRECTLY OR IMPOUND WATER ON ACTIVE TRAVEL LANES

DETOUR

8/17/99
94 JUN-2015 15:13
R:\New\Projects\2603-EC\psh02B-03.dgn
R:\New\Projects\2603-EC\psh02B-03.dgn
R:\New\Projects\2603-EC\psh02B-03.dgn