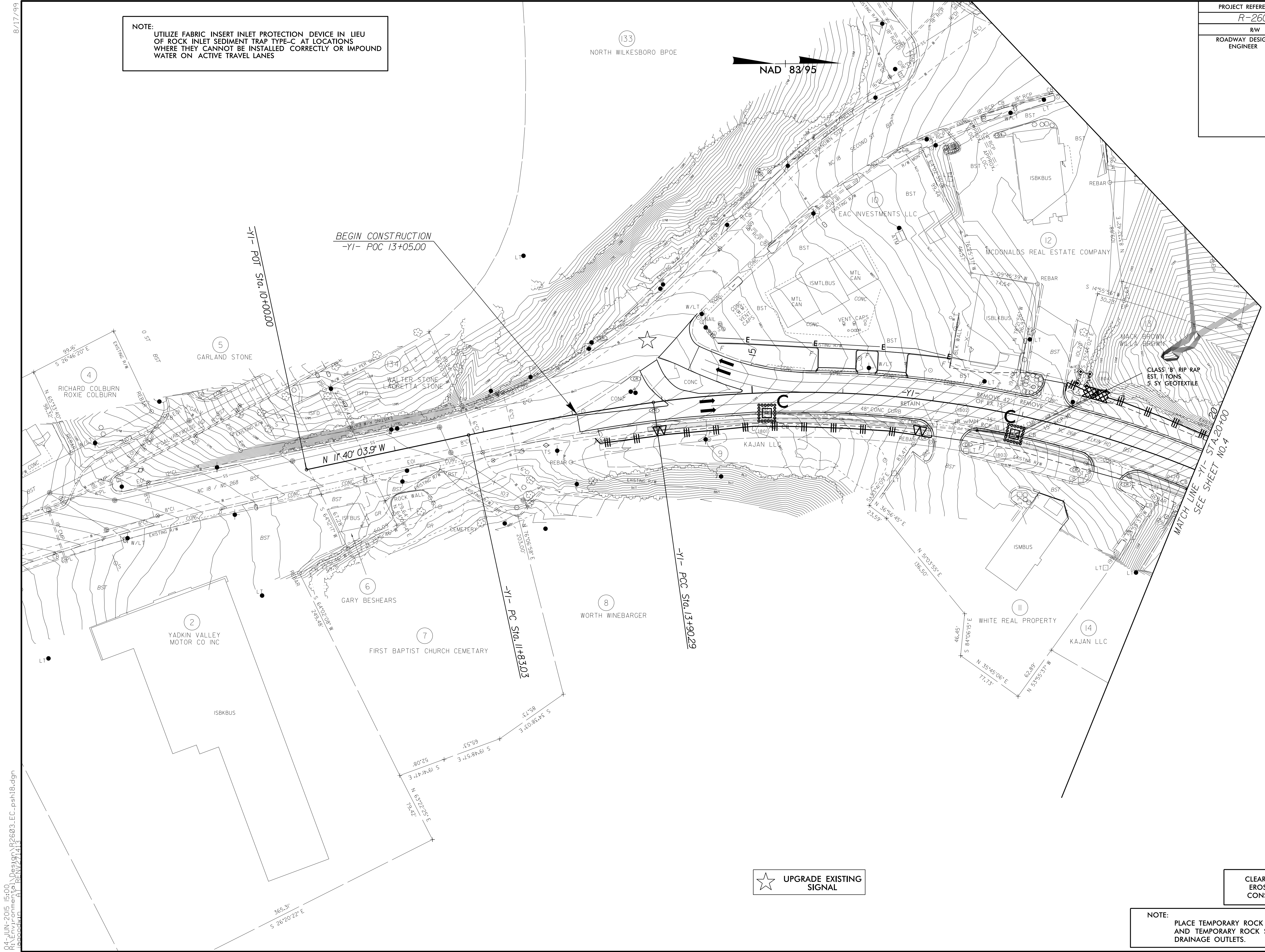


PROJECT REFERENCE NO.	SHEET NO.
R-2603	EC-19/CONST.18
RW SHEET NO.	
ROADWAY DESIGN ENGINEER	HYDRAULICS ENGINEER

NOTE:  
UTILIZE FABRIC INSERT INLET PROTECTION DEVICE IN LIEU OF ROCK INLET SEDIMENT TRAP TYPE-C AT LOCATIONS WHERE THEY CANNOT BE INSTALLED CORRECTLY OR IMPOUND WATER ON ACTIVE TRAVEL LANES

133  
NORTH WILKESBORO BPOE

NAD 83/95



8/17/99  
94 JUN-2015 15:00  
R:\New\Projects\2603\19\EC-19\CONST.18.dgn  
R:\New\Projects\2603\19\EC-19\CONST.18.dgn  
R:\New\Projects\2603\19\EC-19\CONST.18.dgn

☆ UPGRADE EXISTING SIGNAL

CLEARING AND GRUBBING  
EROSION CONTROL FOR  
CONSTRUCTION SHEET 18

NOTE:  
PLACE TEMPORARY ROCK SEDIMENT DAMS TYPE - B AND TEMPORARY ROCK SILT CHECKS TYPE - A AT DRAINAGE OUTLETS.