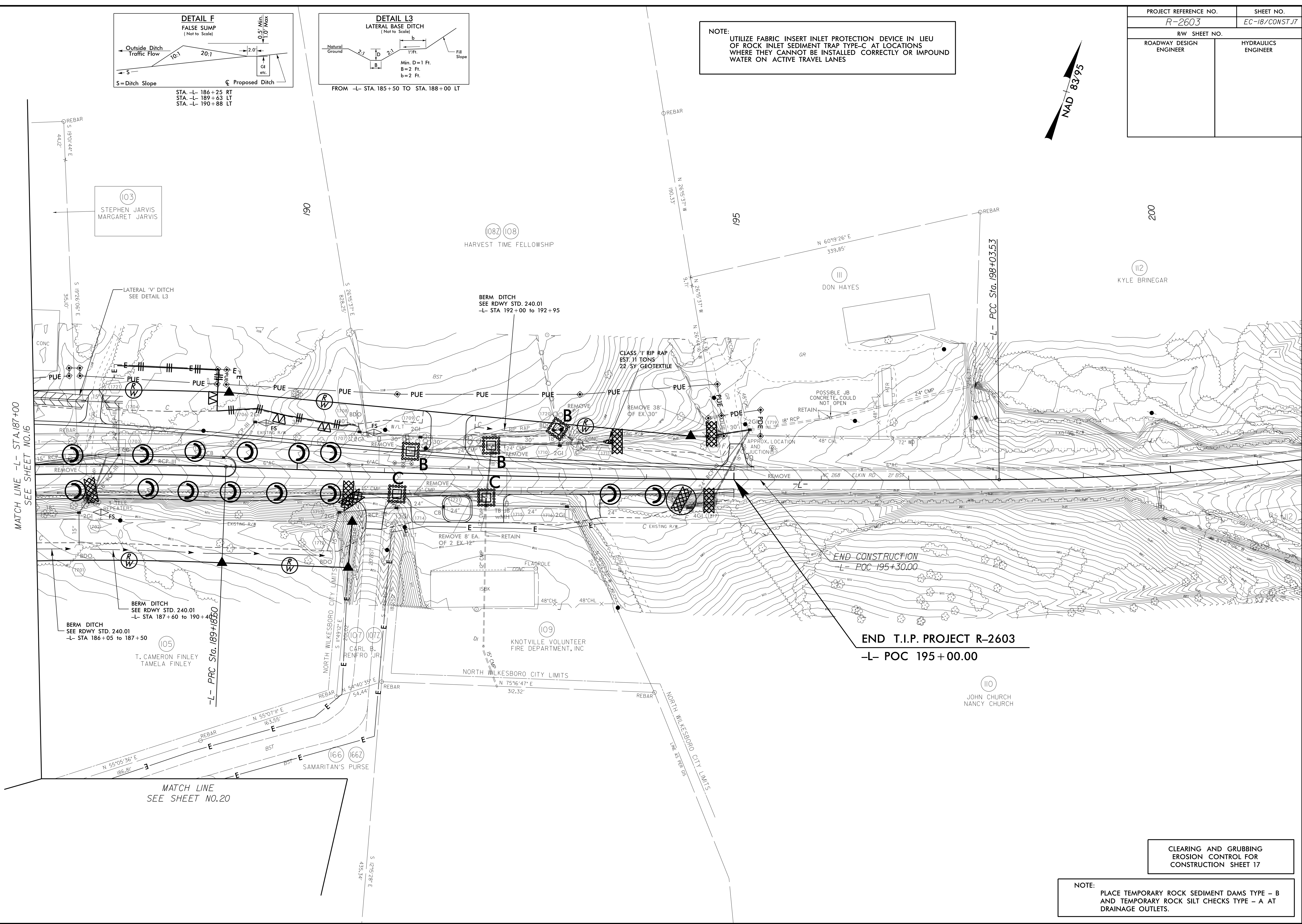
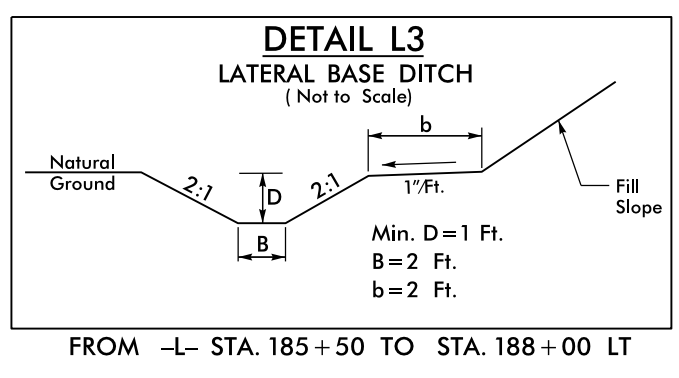
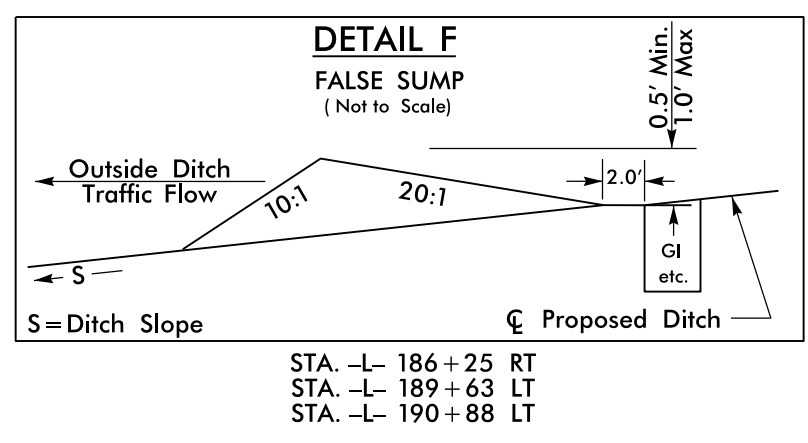
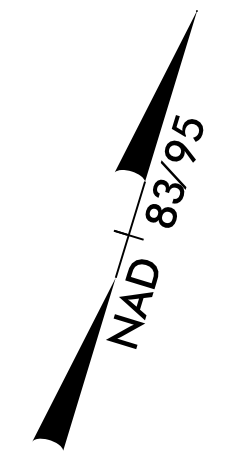


PROJECT REFERENCE NO. R-2603	SHEET NO. EC-18/CONST.17
RW SHEET NO.	
ROADWAY DESIGN ENGINEER	HYDRAULICS ENGINEER

NOTE:
UTILIZE FABRIC INSERT INLET PROTECTION DEVICE IN LIEU OF ROCK INLET SEDIMENT TRAP TYPE-C AT LOCATIONS WHERE THEY CANNOT BE INSTALLED CORRECTLY OR IMPOUND WATER ON ACTIVE TRAVEL LANES



CLEARING AND GRUBBING
EROSION CONTROL FOR
CONSTRUCTION SHEET 17

NOTE:
PLACE TEMPORARY ROCK SEDIMENT DAMS TYPE - B AND TEMPORARY ROCK SILT CHECKS TYPE - A AT DRAINAGE OUTLETS.

8/17/99

94 JUN-2016 14:53
R:\REVISED\PROJECTS\R2603-EC.psh17.dgn
R:\REVISED\PROJECTS\R2603-EC.psh17.dgn
R:\REVISED\PROJECTS\R2603-EC.psh17.dgn