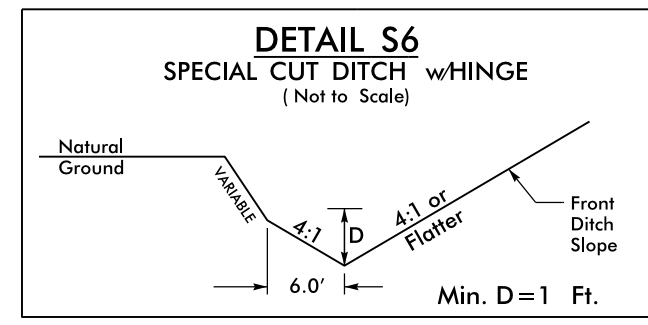
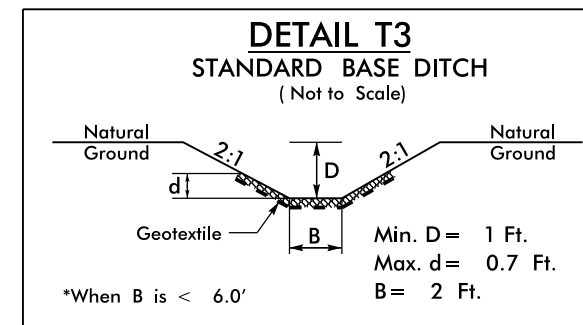


PROJECT REFERENCE NO. R-2603	SHEET NO. EC-13/CONST.12
RW SHEET NO.	
ROADWAY DESIGN ENGINEER	HYDRAULICS ENGINEER

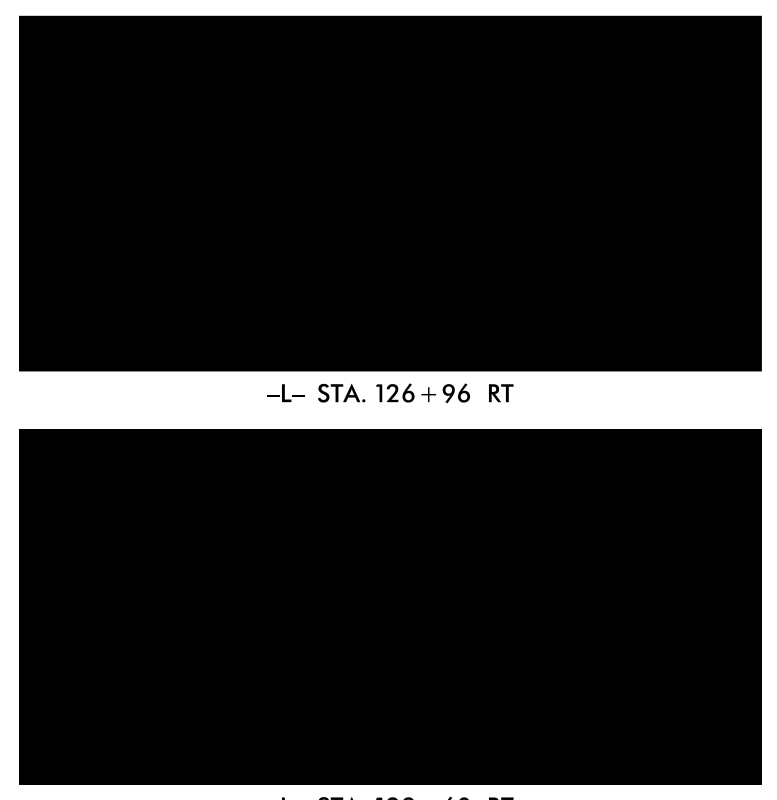
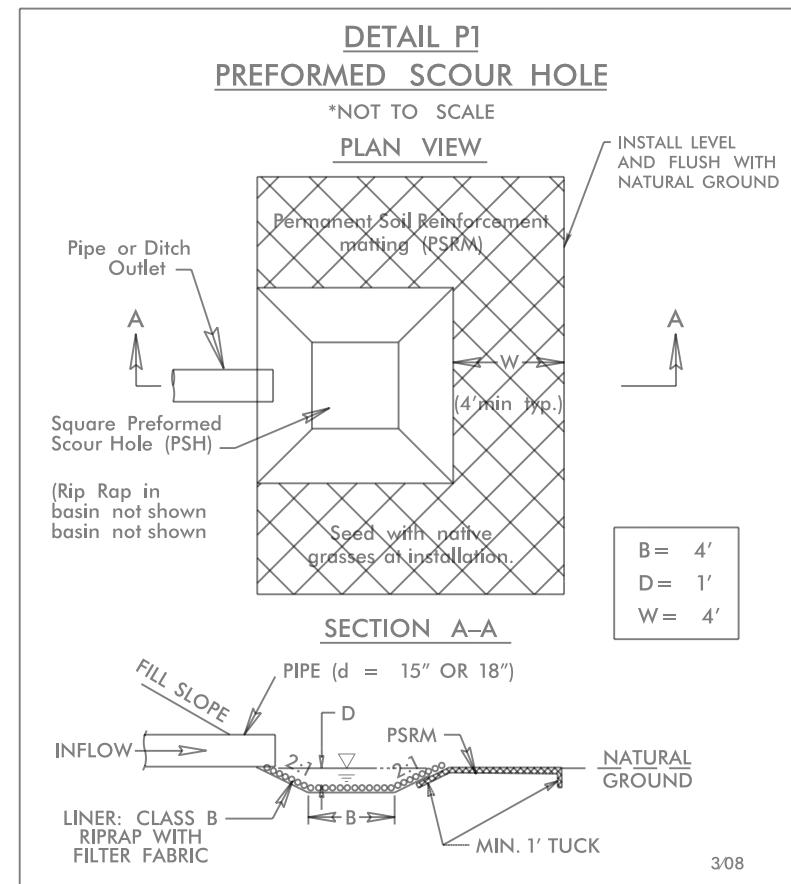
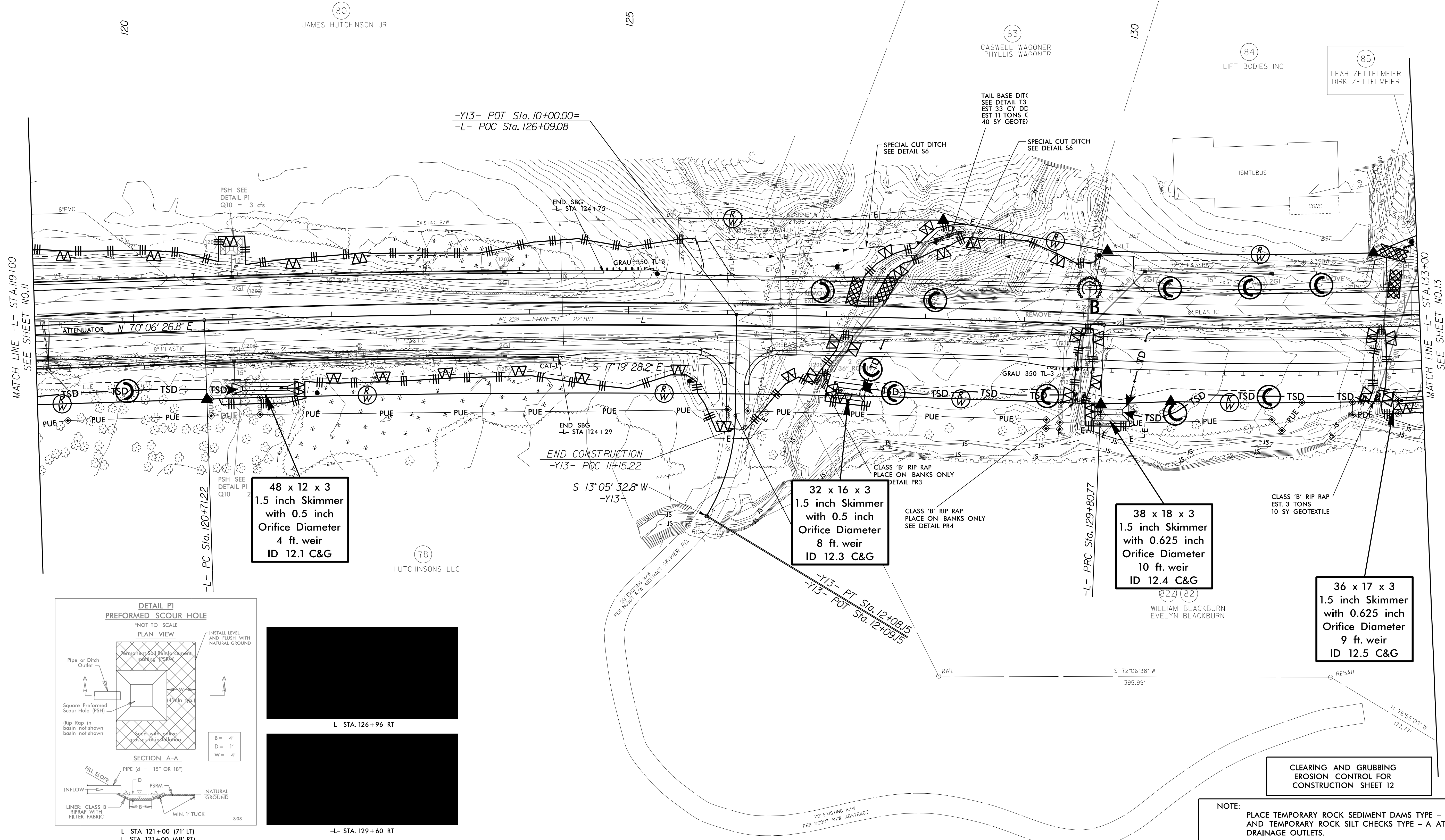


FROM -L- STA. 126+00 TO STA. 129+00 LT



FROM -L- STA. 128+00 (77' LT) TO 128+37 (90' LT)

NOTE:
UTILIZE FABRIC INSERT INLET PROTECTION DEVICE IN LIEU OF ROCK INLET SEDIMENT TRAP TYPE-C AT LOCATIONS WHERE THEY CANNOT BE INSTALLED CORRECTLY OR IMPOUND WATER ON ACTIVE TRAVEL LANES



NOTE:
PLACE TEMPORARY ROCK SEDIMENT DAMS TYPE - B AND TEMPORARY ROCK SILT CHECKS TYPE - A AT DRAINAGE OUTLETS.

04 JUN 2015 12:18:13 \\D:\Projects\2603\EC-13\12.dgn
 8/17/99
 94 JUN 2015 12:18:13 \\D:\Projects\2603\EC-13\12.dgn
 8/17/99