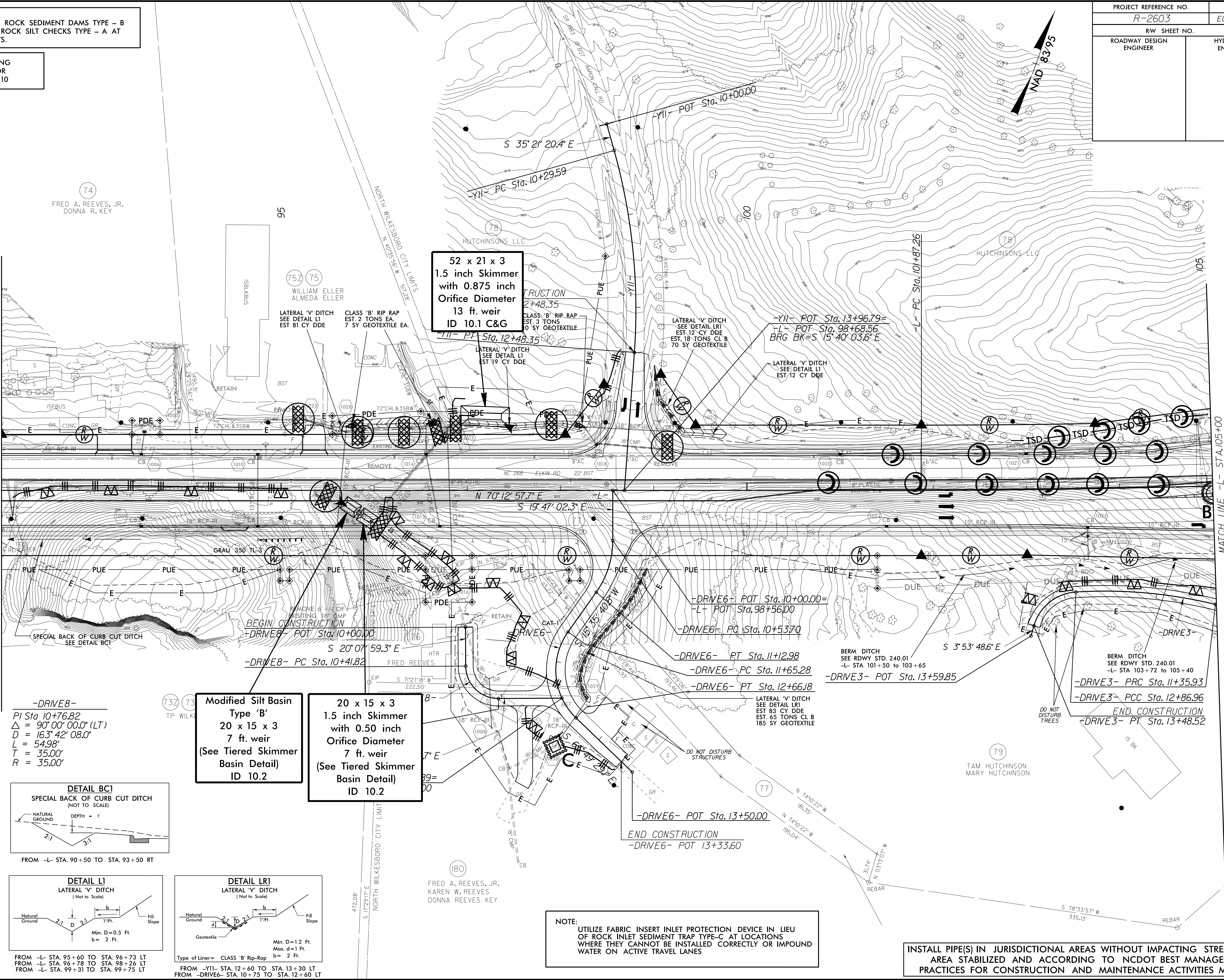


NOTE:
PLACE TEMPORARY ROCK SEDIMENT DAMS TYPE - B
AND TEMPORARY ROCK SILT CHECKS TYPE - A AT
DRAINAGE OUTLETS.

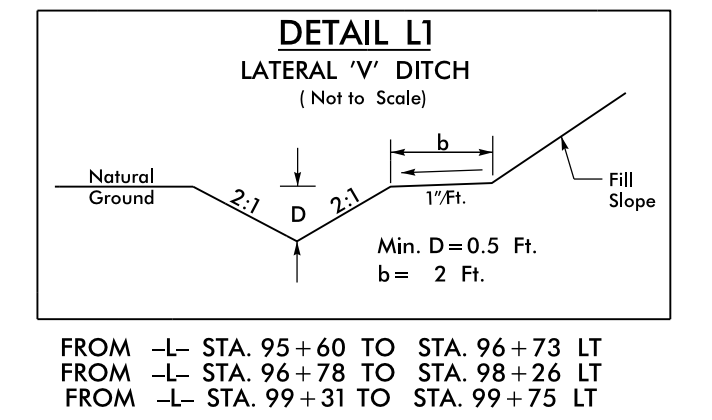
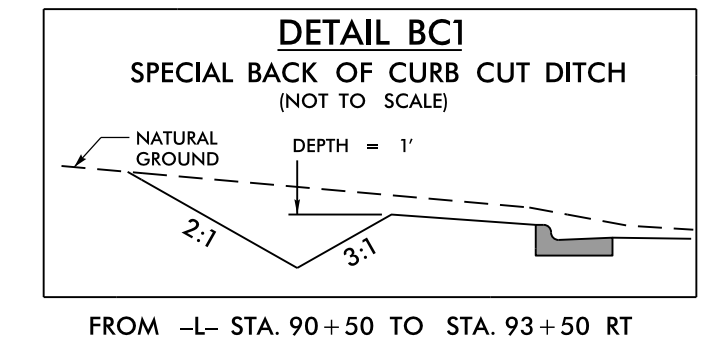
CLEARING AND GRUBBING
EROSION CONTROL FOR
CONSTRUCTION SHEET 10

MATCH LINE -L- STA.92+00
SEE SHEET NO.9

MATCH LINE -L- STA.105+00
SEE SHEET NO.11

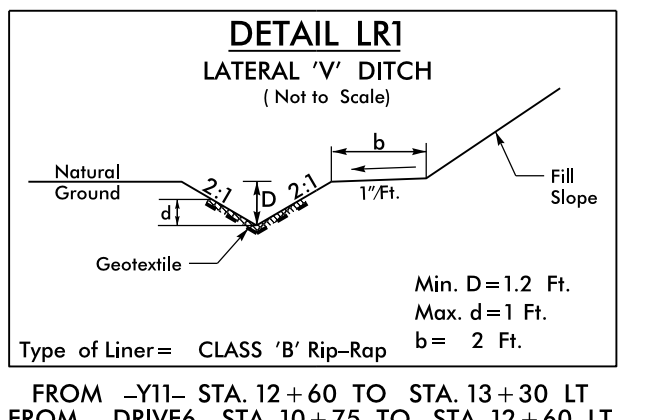


-DRIVE 8-
 PI Sta. 10+76.82
 $\Delta = 90^{\circ} 00' 00.0''$ (LT)
 $D = 163^{\circ} 42' 08.0''$
 $L = 54.98'$
 $T = 35.00'$
 $R = 35.00'$



Modified Silt Basin
Type 'B'
20 x 15 x 3
7 ft. weir
(See Tiered Skimmer Basin Detail)
ID 10.2

20 x 15 x 3
1.5 inch Skimmer
with 0.50 inch
Orifice Diameter
7 ft. weir
(See Tiered Skimmer Basin Detail)
ID 10.2



52 x 21 x 3
1.5 inch Skimmer
with 0.875 inch
Orifice Diameter
13 ft. weir
ID 10.1 C&G

NOTE:
UTILIZE FABRIC INSERT INLET PROTECTION DEVICE IN LIEU
OF ROCK INLET SEDIMENT TRAP TYPE-C AT LOCATIONS
WHERE THEY CANNOT BE INSTALLED CORRECTLY OR IMPOUND
WATER ON ACTIVE TRAVEL LANES

INSTALL PIPE(S) IN JURISDICTIONAL AREAS WITHOUT IMPACTING STREAM UNTIL
AREA STABILIZED AND ACCORDING TO NCDOT BEST MANAGEMENT
PRACTICES FOR CONSTRUCTION AND MAINTENANCE ACTIVITIES MANUAL.

8/17/99
94 JUN-2015 11:44
C:\Users\jrb\OneDrive\Documents\B2603-EC.psh.10.dgn
REVISIONS: 1. 11/13/13
2. 11/13/13
3. 11/13/13
4. 11/13/13
5. 11/13/13
6. 11/13/13
7. 11/13/13
8. 11/13/13
9. 11/13/13
10. 11/13/13
11. 11/13/13
12. 11/13/13
13. 11/13/13
14. 11/13/13
15. 11/13/13
16. 11/13/13
17. 11/13/13
18. 11/13/13
19. 11/13/13
20. 11/13/13
21. 11/13/13
22. 11/13/13
23. 11/13/13
24. 11/13/13
25. 11/13/13
26. 11/13/13
27. 11/13/13
28. 11/13/13
29. 11/13/13
30. 11/13/13
31. 11/13/13
32. 11/13/13
33. 11/13/13
34. 11/13/13
35. 11/13/13
36. 11/13/13
37. 11/13/13
38. 11/13/13
39. 11/13/13
40. 11/13/13
41. 11/13/13
42. 11/13/13
43. 11/13/13
44. 11/13/13
45. 11/13/13
46. 11/13/13
47. 11/13/13
48. 11/13/13
49. 11/13/13
50. 11/13/13
51. 11/13/13
52. 11/13/13
53. 11/13/13
54. 11/13/13
55. 11/13/13
56. 11/13/13
57. 11/13/13
58. 11/13/13
59. 11/13/13
60. 11/13/13
61. 11/13/13
62. 11/13/13
63. 11/13/13
64. 11/13/13
65. 11/13/13
66. 11/13/13
67. 11/13/13
68. 11/13/13
69. 11/13/13
70. 11/13/13
71. 11/13/13
72. 11/13/13
73. 11/13/13
74. 11/13/13
75. 11/13/13
76. 11/13/13
77. 11/13/13
78. 11/13/13
79. 11/13/13
80. 11/13/13
81. 11/13/13
82. 11/13/13
83. 11/13/13
84. 11/13/13
85. 11/13/13
86. 11/13/13
87. 11/13/13
88. 11/13/13
89. 11/13/13
90. 11/13/13
91. 11/13/13
92. 11/13/13
93. 11/13/13
94. 11/13/13
95. 11/13/13
96. 11/13/13
97. 11/13/13
98. 11/13/13
99. 11/13/13
100. 11/13/13
101. 11/13/13
102. 11/13/13
103. 11/13/13
104. 11/13/13
105. 11/13/13
106. 11/13/13
107. 11/13/13
108. 11/13/13
109. 11/13/13
110. 11/13/13
111. 11/13/13
112. 11/13/13
113. 11/13/13
114. 11/13/13
115. 11/13/13
116. 11/13/13
117. 11/13/13
118. 11/13/13
119. 11/13/13
120. 11/13/13
121. 11/13/13
122. 11/13/13
123. 11/13/13
124. 11/13/13
125. 11/13/13
126. 11/13/13
127. 11/13/13
128. 11/13/13
129. 11/13/13
130. 11/13/13
131. 11/13/13
132. 11/13/13
133. 11/13/13
134. 11/13/13
135. 11/13/13
136. 11/13/13
137. 11/13/13
138. 11/13/13
139. 11/13/13
140. 11/13/13
141. 11/13/13
142. 11/13/13
143. 11/13/13
144. 11/13/13
145. 11/13/13
146. 11/13/13
147. 11/13/13
148. 11/13/13
149. 11/13/13
150. 11/13/13
151. 11/13/13
152. 11/13/13
153. 11/13/13
154. 11/13/13
155. 11/13/13
156. 11/13/13
157. 11/13/13
158. 11/13/13
159. 11/13/13
160. 11/13/13
161. 11/13/13
162. 11/13/13
163. 11/13/13
164. 11/13/13
165. 11/13/13
166. 11/13/13
167. 11/13/13
168. 11/13/13
169. 11/13/13
170. 11/13/13
171. 11/13/13
172. 11/13/13
173. 11/13/13
174. 11/13/13
175. 11/13/13
176. 11/13/13
177. 11/13/13
178. 11/13/13
179. 11/13/13
180. 11/13/13
181. 11/13/13
182. 11/13/13
183. 11/13/13
184. 11/13/13
185. 11/13/13
186. 11/13/13
187. 11/13/13
188. 11/13/13
189. 11/13/13
190. 11/13/13
191. 11/13/13
192. 11/13/13
193. 11/13/13
194. 11/13/13
195. 11/13/13
196. 11/13/13
197. 11/13/13
198. 11/13/13
199. 11/13/13
200. 11/13/13