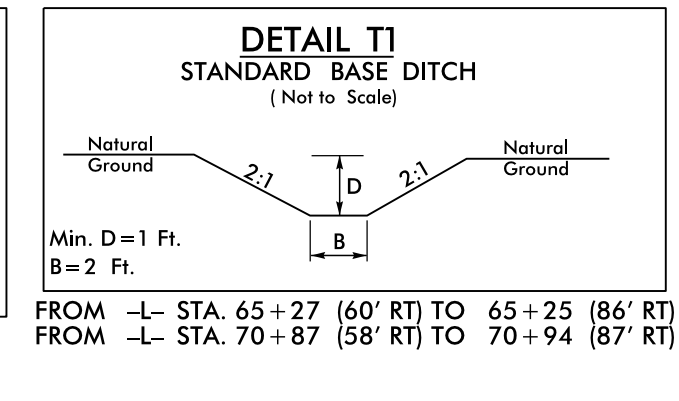
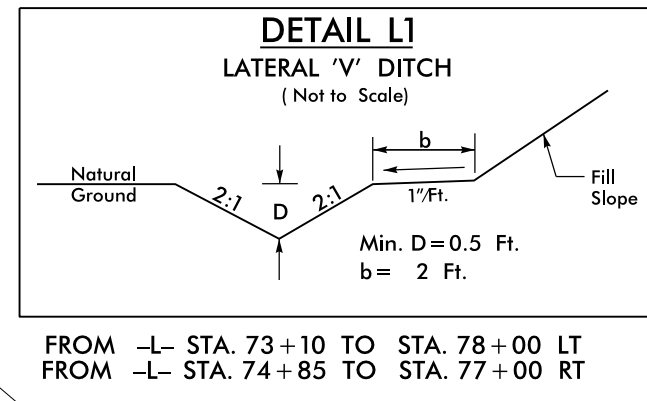
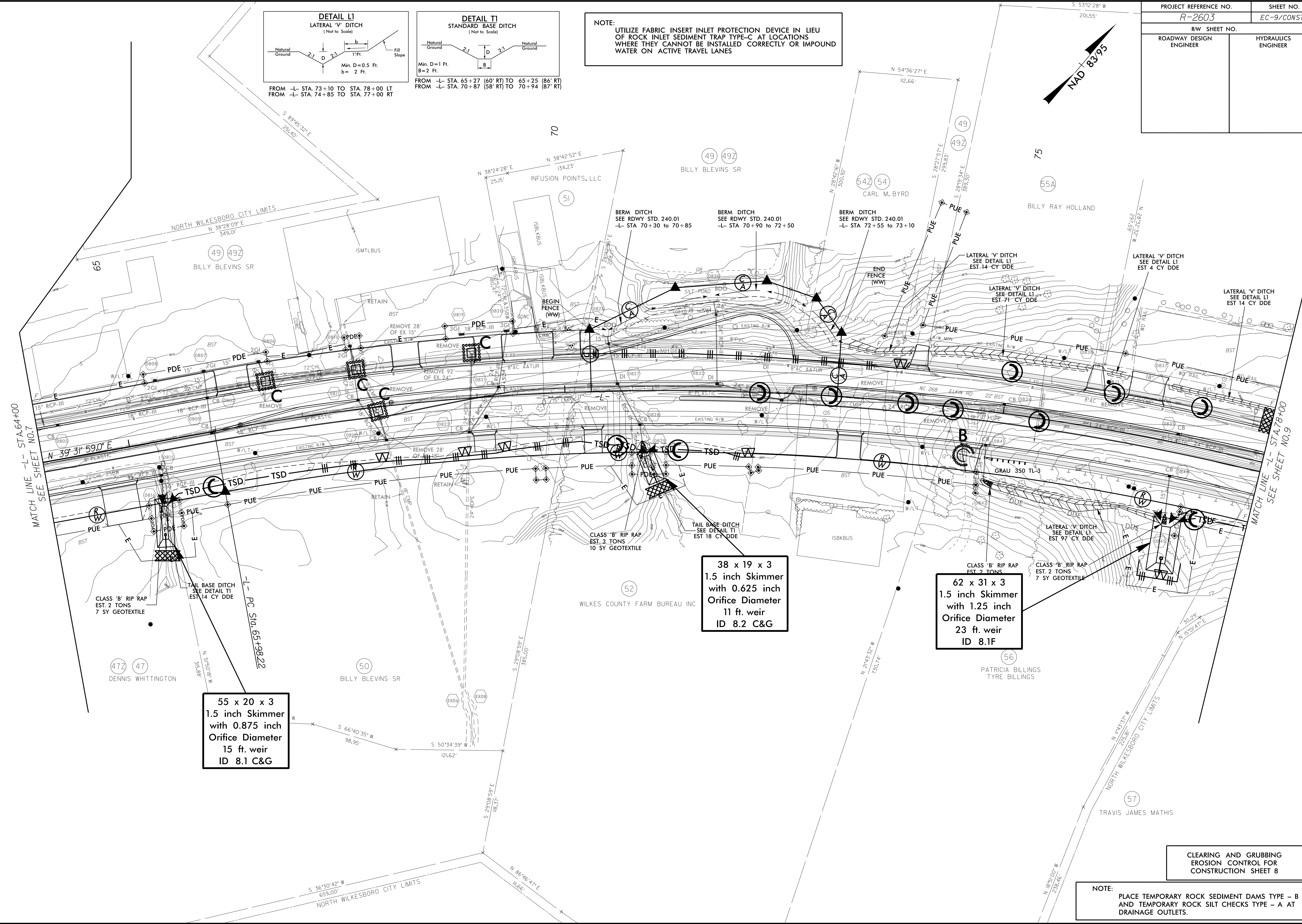
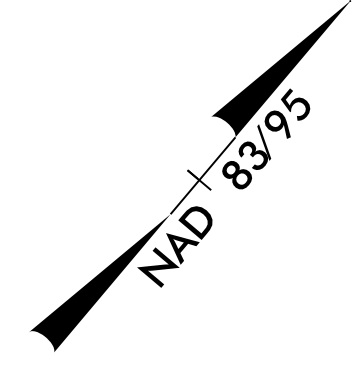


PROJECT REFERENCE NO. R-2603	SHEET NO. EC-9/CONST.8
RW SHEET NO.	
ROADWAY DESIGN ENGINEER	HYDRAULICS ENGINEER



**NOTE:**  
UTILIZE FABRIC INSERT INLET PROTECTION DEVICE IN LIEU OF ROCK INLET SEDIMENT TRAP TYPE-C AT LOCATIONS WHERE THEY CANNOT BE INSTALLED CORRECTLY OR IMPOUND WATER ON ACTIVE TRAVEL LANES



**55 x 20 x 3**  
1.5 inch Skimmer  
with 0.875 inch  
Orifice Diameter  
15 ft. weir  
ID 8.1 C&G

**38 x 19 x 3**  
1.5 inch Skimmer  
with 0.625 inch  
Orifice Diameter  
11 ft. weir  
ID 8.2 C&G

**62 x 31 x 3**  
1.5 inch Skimmer  
with 1.25 inch  
Orifice Diameter  
23 ft. weir  
ID 8.1F

**CLEARING AND GRUBBING**  
EROSION CONTROL FOR  
CONSTRUCTION SHEET 8

**NOTE:**  
PLACE TEMPORARY ROCK SEDIMENT DAMS TYPE - B AND TEMPORARY ROCK SILT CHECKS TYPE - A AT DRAINAGE OUTLETS.

8/17/99  
94 JUN-2015 10:54 D:\projects\2603\EC-ps\08.dgn  
R:\projects\2603\EC-ps\08.dgn  
R:\projects\2603\EC-ps\08.dgn