

-LDET- STA 10+00±
TIE TO EXIST.

-LDET- STA 11+40±
BEGIN PCB
4' OFFSET

-LDET- STA 11+75±
PCB 2' OFFSET

-LDET- STA 13+50±
BEG. ANCH. PCB

-L- STA 15+50±
END ANCH. PCB

-LDET- STA 18+15±
END PCB
2' OFFSET

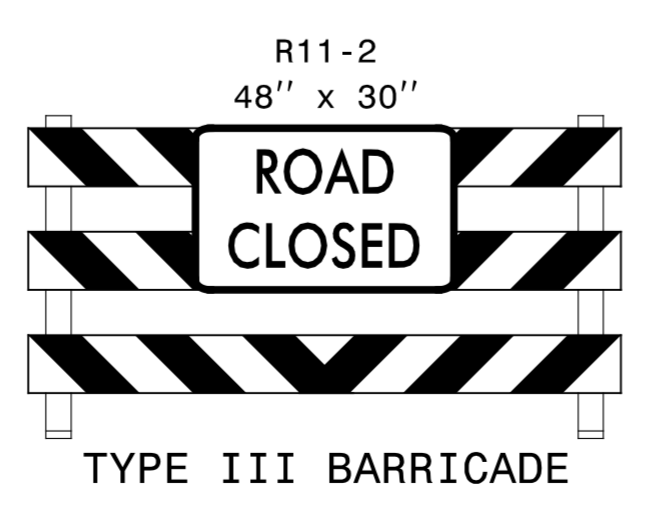
-LDET- STA 18+25±
END PCB
2' OFFSET

-L- STA 18+50±
TIE TO EXIST.

-L- STA 21+00±
TIE TO EXIST.

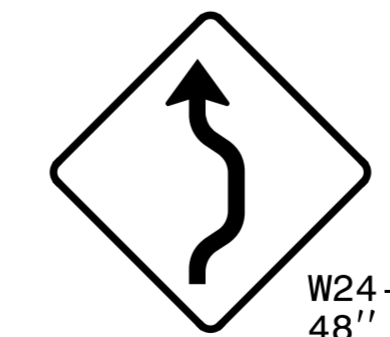
10+00 (-LDET-)

15+00 (-LDET-)



TYPE III BARRICADE

①



W24-1R
48'' X 48''

②

APPROVED: *Michael T. Rzepka* DATE: 5/15/2015

PHASE I STEP 4A
DETAIL

5/14/2015
R:\TrafficControl\2603\2603.tmp.pl.s4a.dtl_02.dgn
ICA Engineering