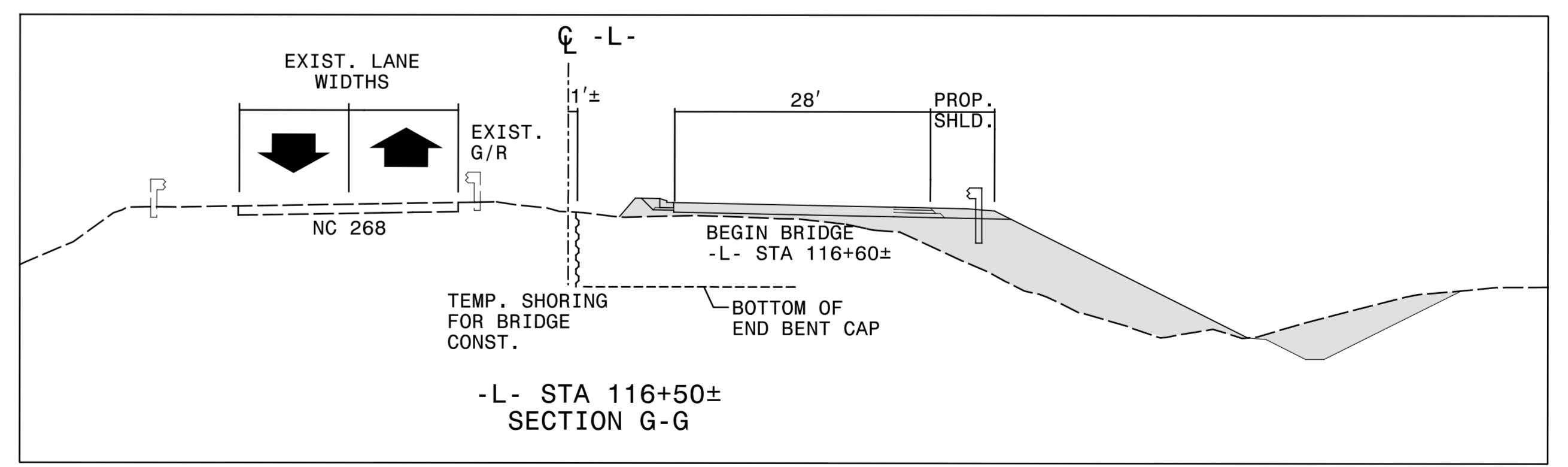
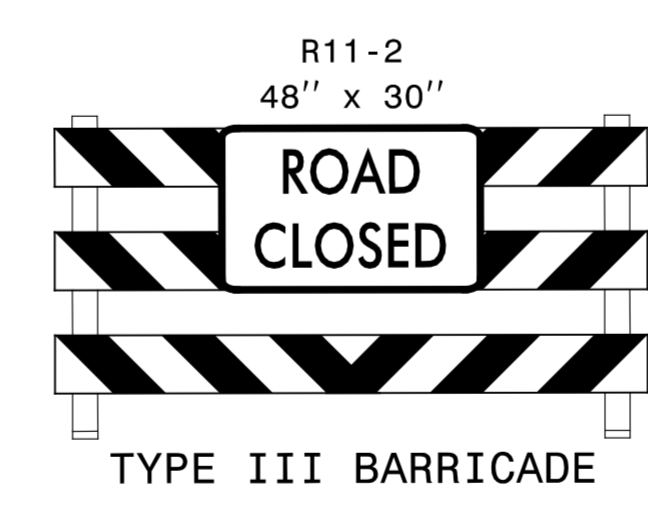
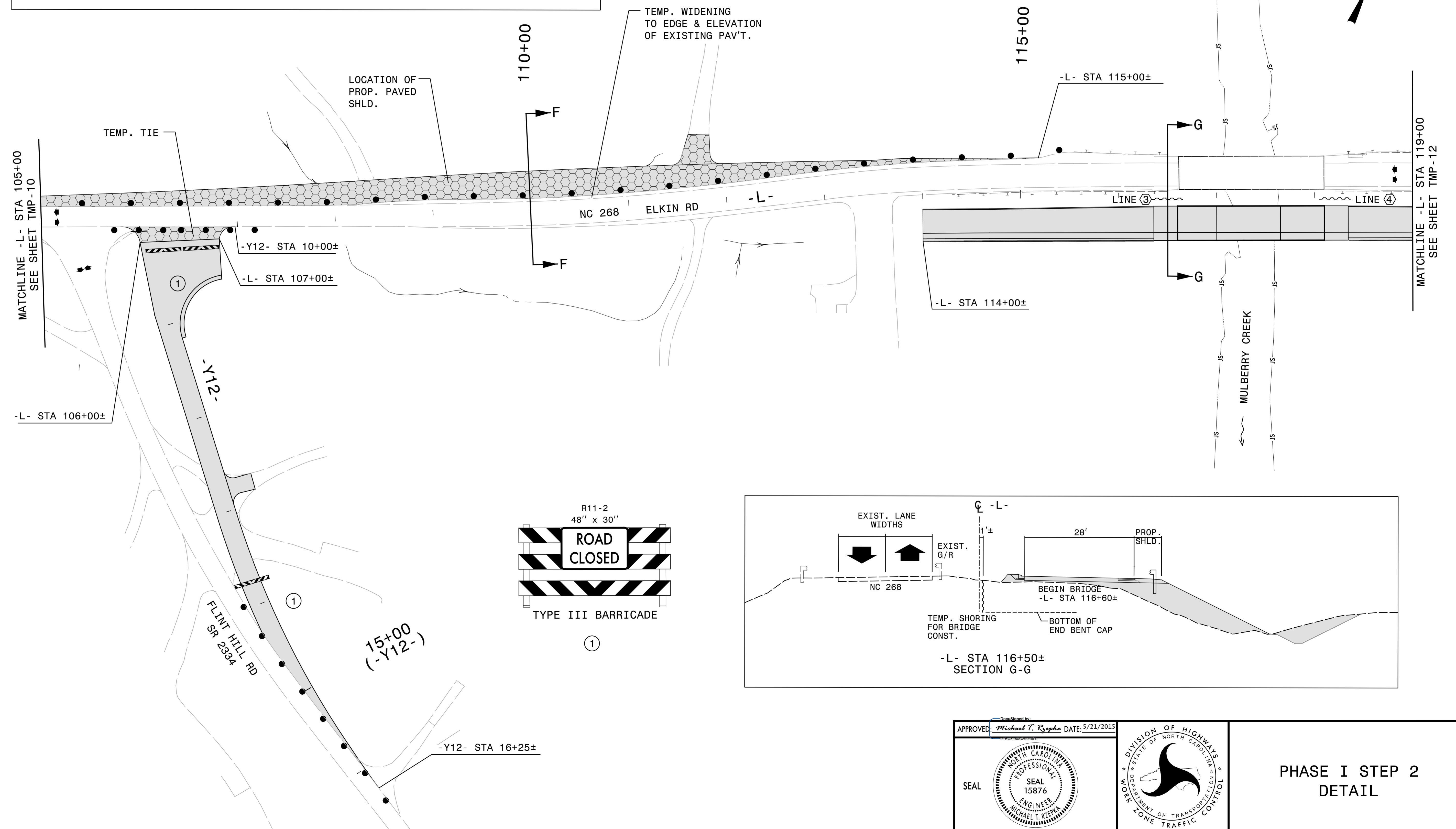
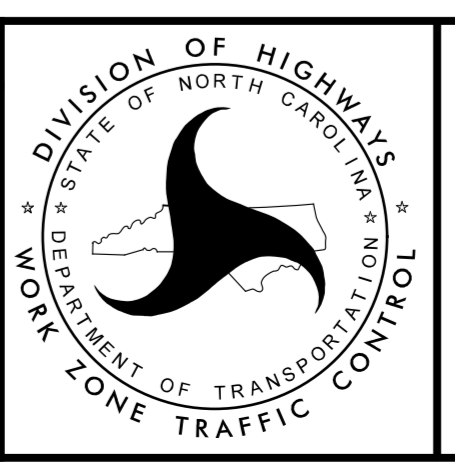
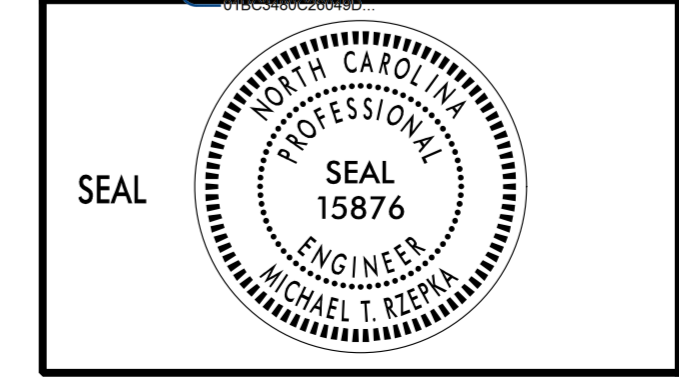


③ QUANTITY = 184 SQ. FT.
TEMPORARY SHORING
-L- STA 116+34± 1.0' RT TO -L- STA 116+65± 1.0' RT
(SEE SHEET TMP-2F FOR TEMPORARY SHORING NOTES)

④ QUANTITY = 200 SQ. FT.
TEMPORARY SHORING
-L- STA 118+05± 1.0' RT TO -L- STA 118+37± 1.0' RT
(SEE SHEET TMP-2F FOR TEMPORARY SHORING NOTES)



APPROVED: Michael T. Rzepka DATE: 5/21/2015



**PHASE I STEP 2
DETAIL**

5/21/2015
R:\TrafficControl\CPV\2603_tmp.pl_s2.dtl_08.dgn
ICA Engineering