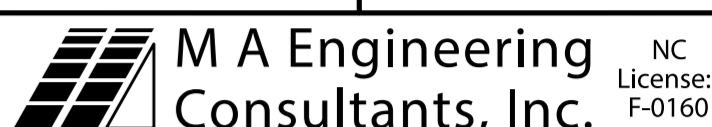
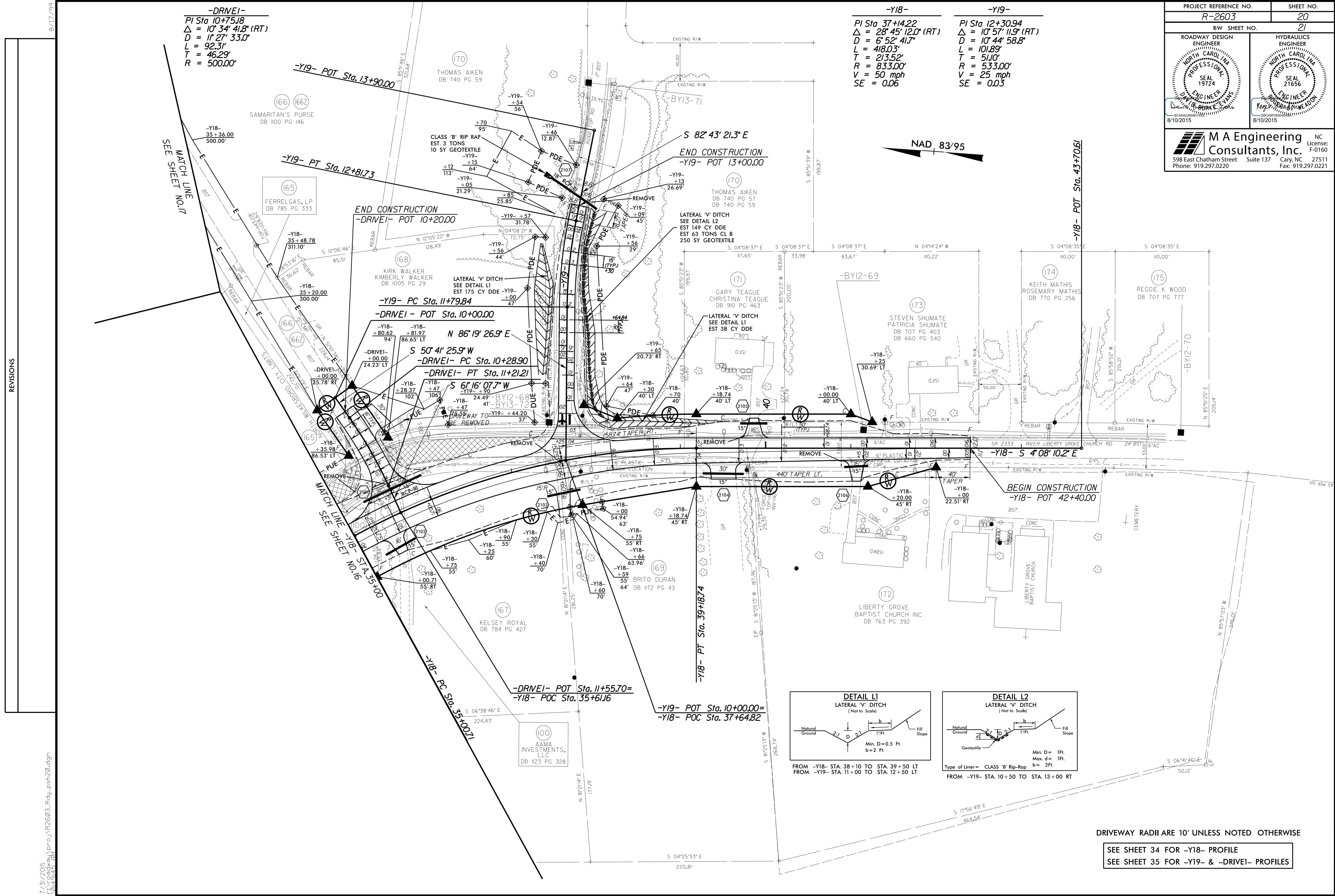


PROJECT REFERENCE NO. R-2603	SHEET NO. 20
RW SHEET NO. 21	
ROADWAY DESIGN ENGINEER DAVID B. BURKE, P.E. NORTH CAROLINA PROFESSIONAL ENGINEER SEAL 19724 8/10/2015	HYDRAULICS ENGINEER ROY L. BOWEN, P.E. NORTH CAROLINA PROFESSIONAL ENGINEER SEAL 21656 8/10/2015
 M A Engineering Consultants, Inc. 598 East Chatham Street Suite 137 Cary, NC 27511 Phone: 919.297.0220 Fax: 919.297.0221	

-DRIVEI-
 PI Sta 10+75.18
 $\Delta = 10' 34" 41.8" (RT)$
 $D = 11' 27" 33.0"$
 $L = 92.31'$
 $T = 46.29'$
 $R = 500.00'$

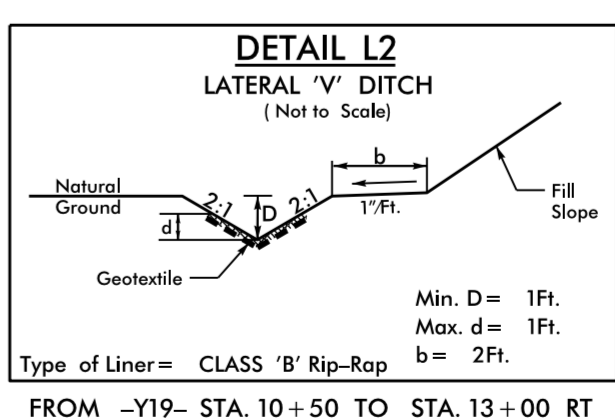
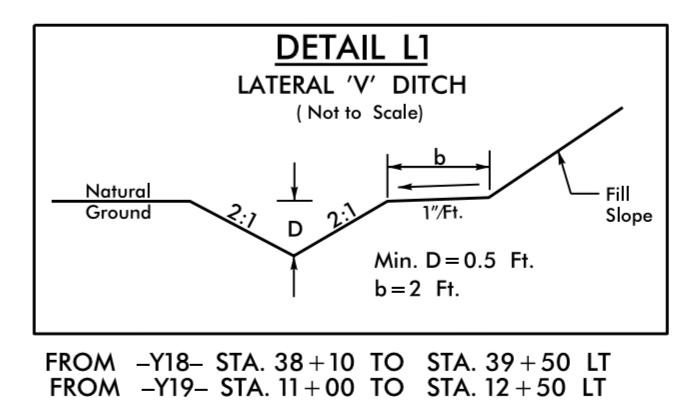
-Y18-
 PI Sta 37+14.22
 $\Delta = 28' 45" 12.0" (RT)$
 $D = 6' 52" 41.7"$
 $L = 418.03'$
 $T = 213.52'$
 $R = 833.00'$
 $V = 50 \text{ mph}$
 $SE = 0.06$

-Y19-
 PI Sta 12+30.94
 $\Delta = 10' 57" 11.9" (RT)$
 $D = 10' 44" 58.8"$
 $L = 101.89'$
 $T = 51.00'$
 $R = 533.00'$
 $V = 25 \text{ mph}$
 $SE = 0.03$



REVISIONS

7/31/2015
 10:45:30 AM
 pr-oj\p2603.Rdy-phz20.dgn



DRIVEWAY RADII ARE 10' UNLESS NOTED OTHERWISE
 SEE SHEET 34 FOR -Y18- PROFILE
 SEE SHEET 35 FOR -Y19- & -DRIVEI- PROFILES