
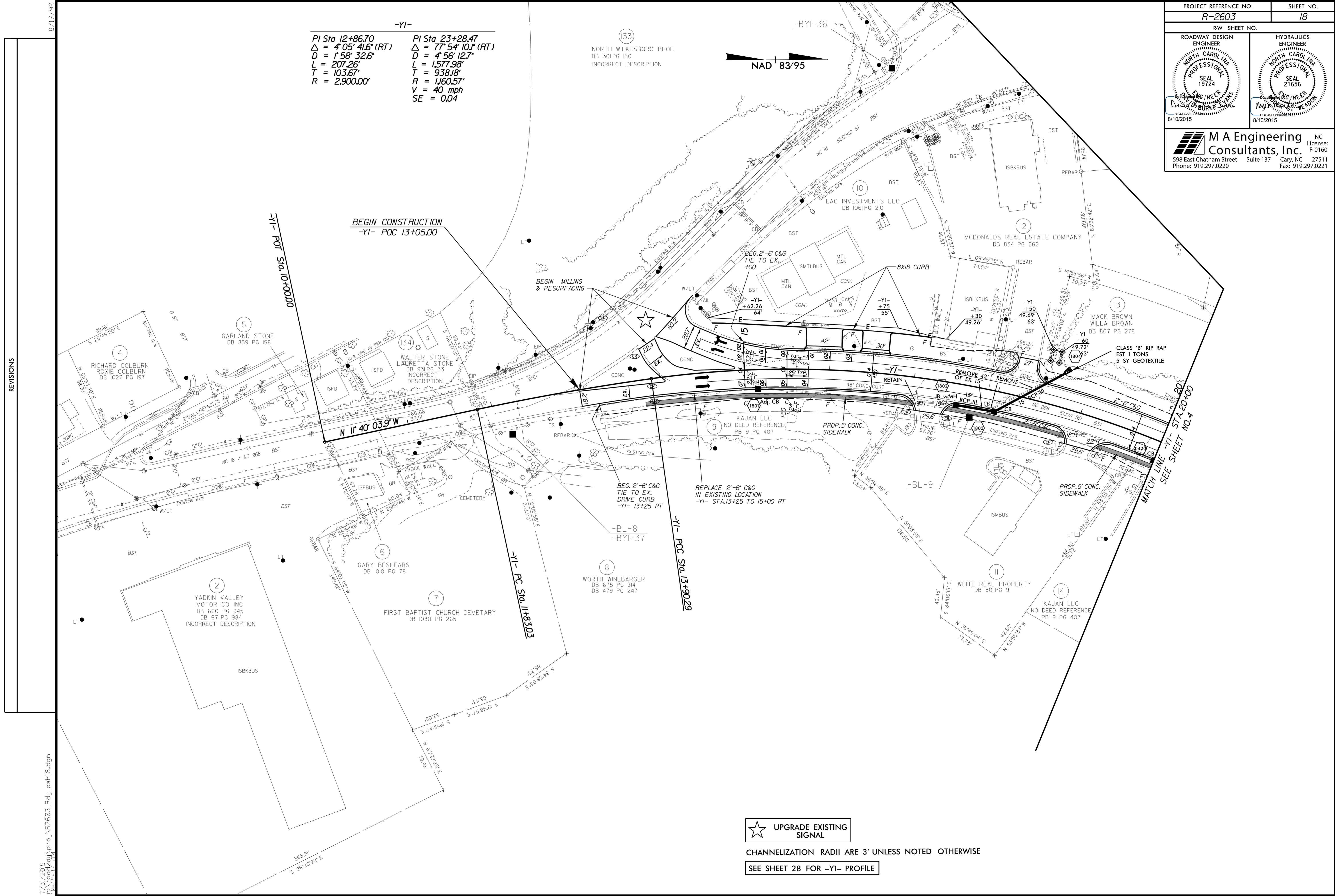
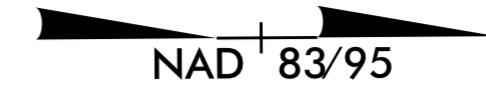


PROJECT REFERENCE NO. <b>R-2603</b>		SHEET NO. <b>18</b>	
RW SHEET NO.			
ROADWAY DESIGN ENGINEER <b>North Carolina Professional Engineer</b> SEAL 19724 Darius D. Burke, Esq. 8/10/2015		HYDRAULICS ENGINEER <b>North Carolina Professional Engineer</b> SEAL 21656 Raymond M. Weadon 8/10/2015	
 <b>M A Engineering Consultants, Inc.</b> 598 East Chatham Street Suite 137 Cary, NC 27511 Phone: 919.297.0220 Fax: 919.297.0221			

**-YI-**

PI Sta 12+86.70	PI Sta 23+28.47
$\Delta = 4'05''41.6''$ (RT)	$\Delta = 7'54''10.1''$ (RT)
$D = 1'58''32.6''$	$D = 4'56''12.7''$
$L = 207.26'$	$L = 1577.98'$
$T = 103.67'$	$T = 938.18'$
$R = 2,900.00'$	$R = 1,160.57'$
	$V = 40$ mph
	$SE = 0.04$

(133) NORTH WILKESBORO BPOE  
DB 301 PG 150  
INCORRECT DESCRIPTION



REVISIONS



CHANNELIZATION RADII ARE 3' UNLESS NOTED OTHERWISE

SEE SHEET 28 FOR -YI- PROFILE

7/31/2015  
16:45:37  
pr-j\p2603\_rdy-ph18.dgn