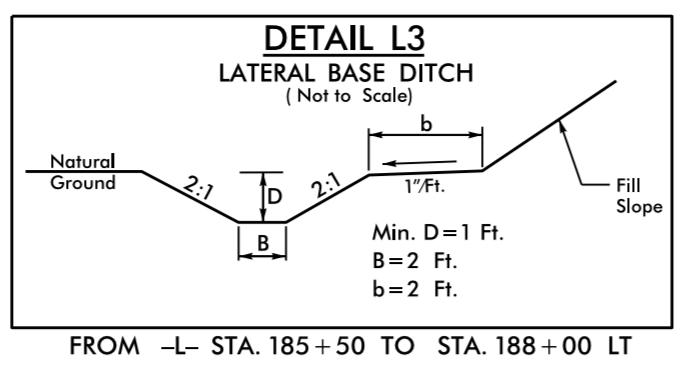
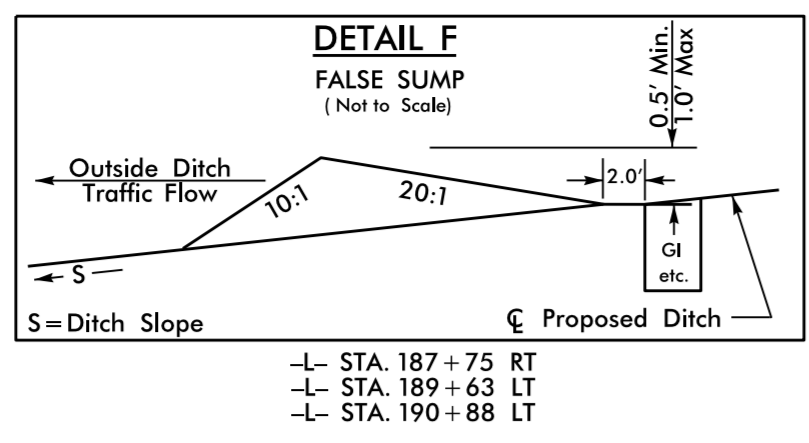
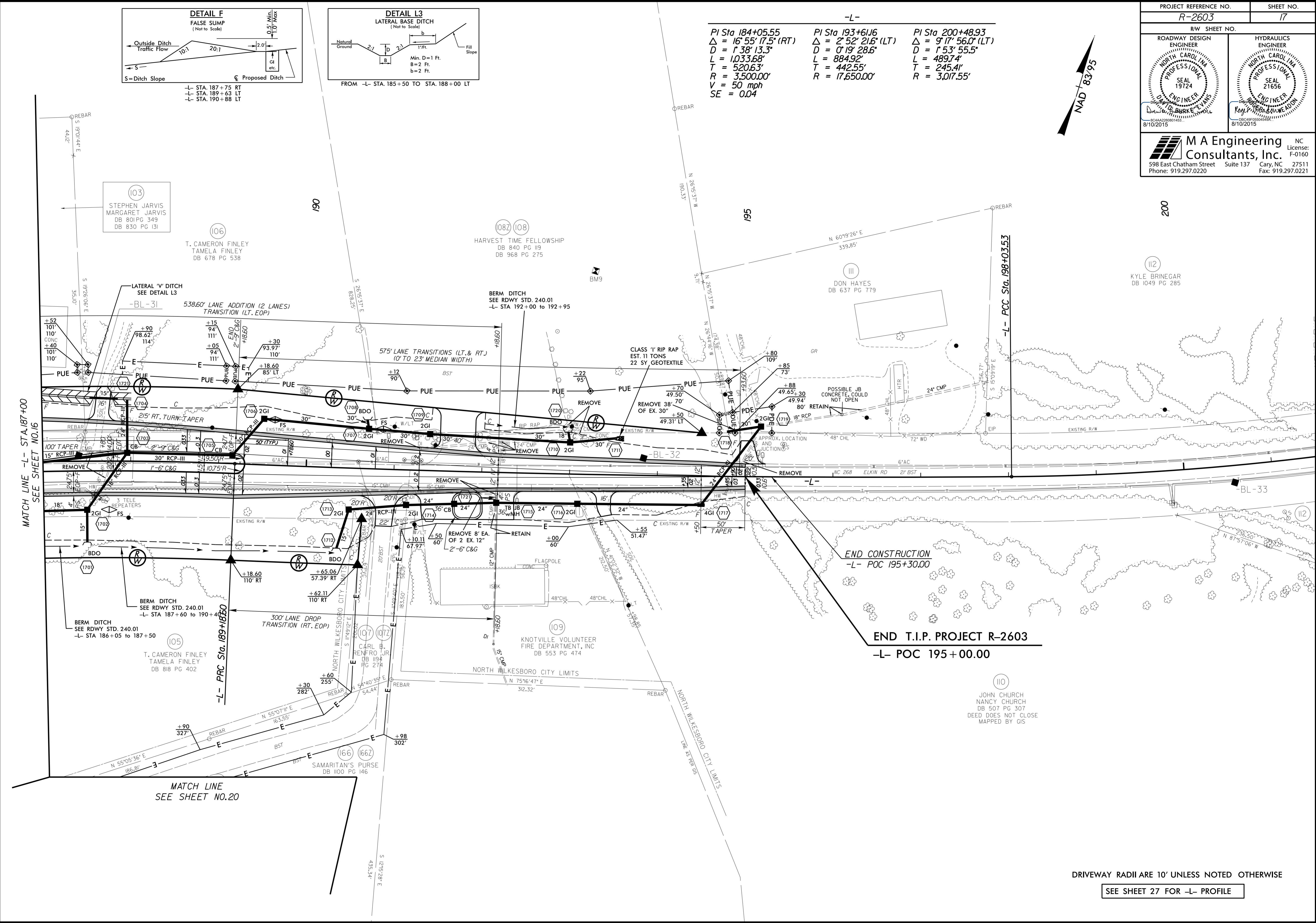


PROJECT REFERENCE NO. R-2603	SHEET NO. 17
RW SHEET NO.	
ROADWAY DESIGN ENGINEER STEPHEN JARVIS DB 801 PG 349 DB 830 PG 131	HYDRAULICS ENGINEER ROY L. BRUNER DB 158 PG 100 DB 159 PG 101
M A Engineering Consultants, Inc. 598 East Chatham Street Suite 137 Cary, NC 27511 Phone: 919.297.0220 Fax: 919.297.0221	

-L-

PI Sta 184+05.55 $\Delta = 16'55"17.5" (RT)$ $D = 1'38"13.3"$ $L = 1033.68'$ $T = 520.63'$ $R = 3,500.00'$ $V = 50 \text{ mph}$ $SE = 0.04$	PI Sta 193+61.16 $\Delta = 2'52"21.6" (LT)$ $D = 0'19"28.6"$ $L = 884.92'$ $T = 442.55'$ $R = 17,650.00'$	PI Sta 200+48.93 $\Delta = 9'17"56.0" (LT)$ $D = 1'53"55.5"$ $L = 489.74'$ $T = 245.41'$ $R = 3,07.55'$
---	---	---



MATCH LINE -L- STA.187+00
SEE SHEET NO.16

MATCH LINE
SEE SHEET NO.20

END CONSTRUCTION
-L- POC 195+30.00

END T.I.P. PROJECT R-2603
-L- POC 195+00.00

DRIVEWAY RADII ARE 10' UNLESS NOTED OTHERWISE

SEE SHEET 27 FOR -L- PROFILE

REVISIONS

7/31/2015
10:45:33 AM
pr-oj\p2603_rdy.psh17.dgn