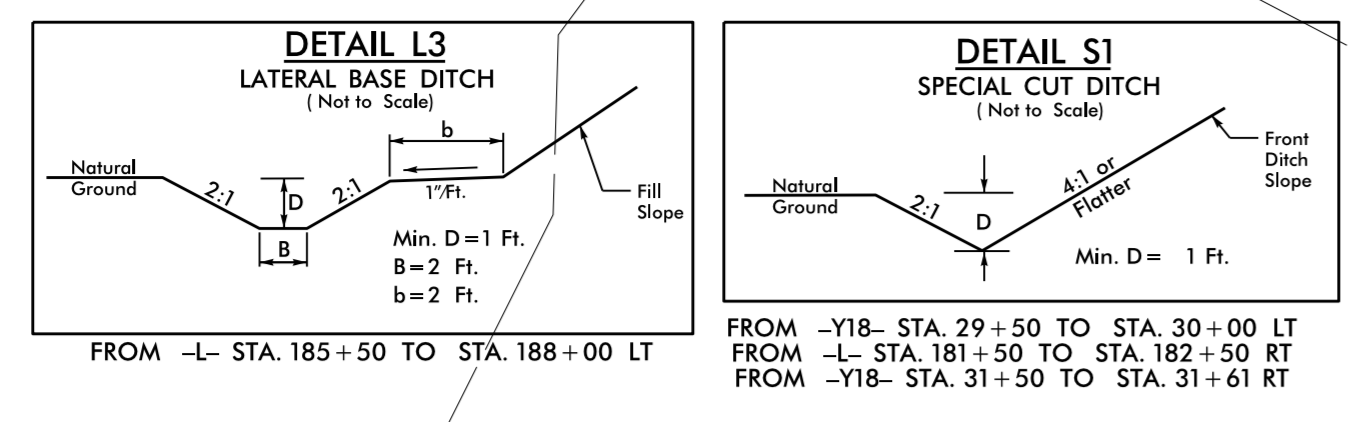
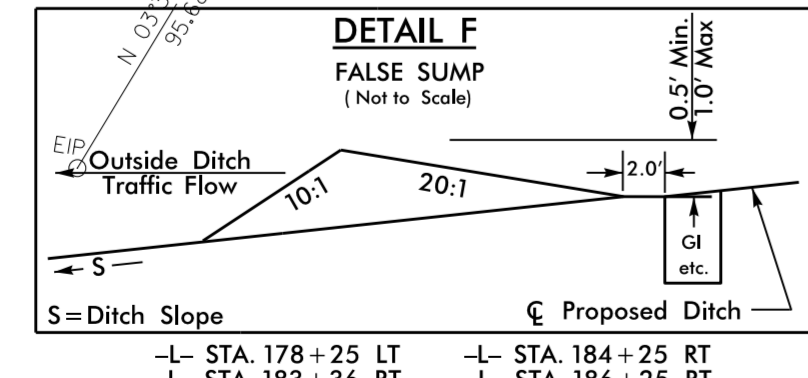
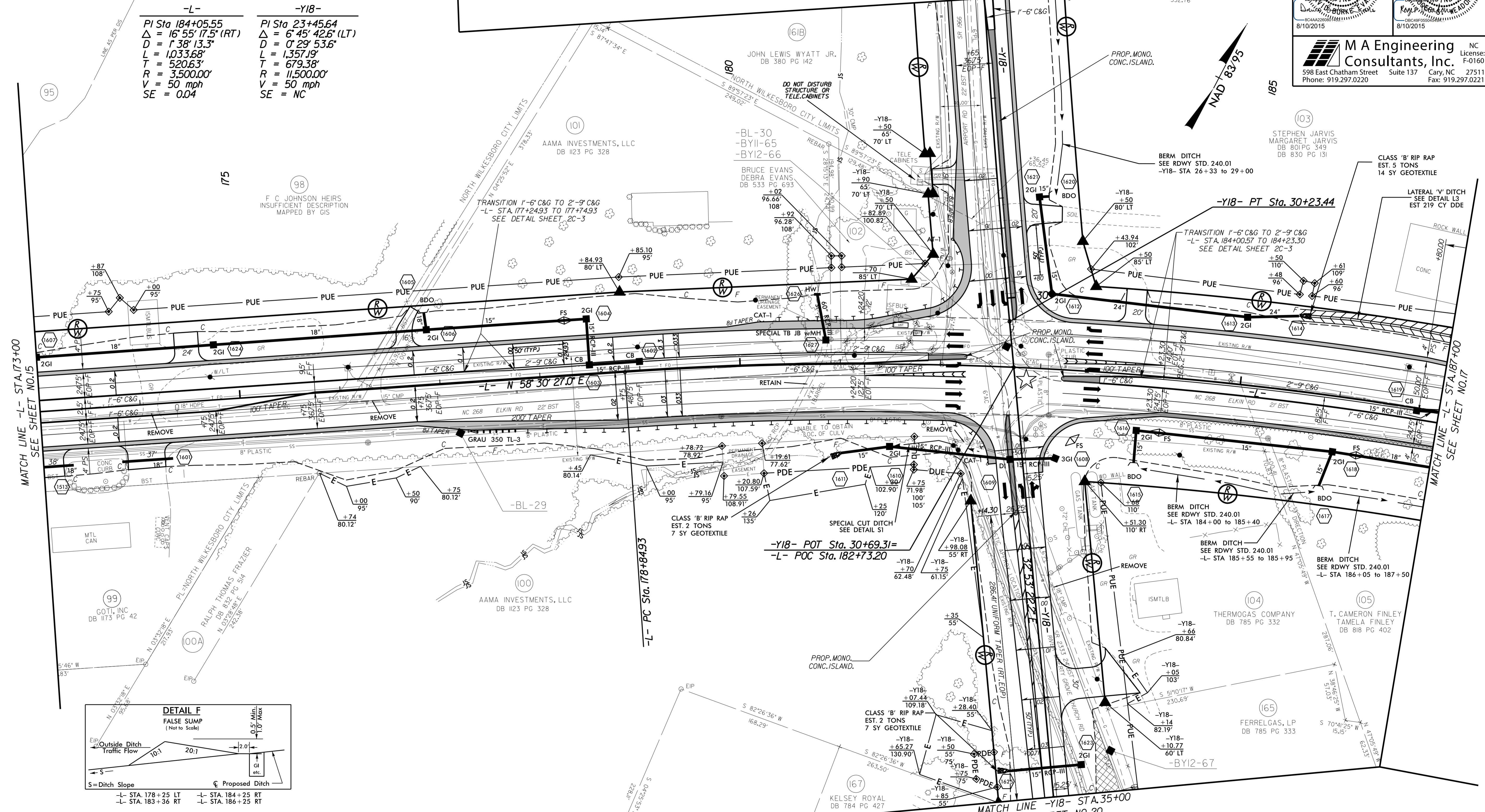


PROJECT REFERENCE NO. <b>R-2603</b>		SHEET NO. <b>16</b>	
RW SHEET NO.			
ROADWAY DESIGN ENGINEER NORTH CAROLINA PROFESSIONAL SEAL 19724 8/10/2015		HYDRAULICS ENGINEER NORTH CAROLINA PROFESSIONAL SEAL 21656 8/10/2015	
<b>M A Engineering Consultants, Inc.</b> 598 East Chatham Street Suite 137 Cary, NC 27511 Phone: 919.297.0220 Fax: 919.297.0221			



-L-	-Y18-
PI Sta 184+05.55	PI Sta 23+45.64
$\Delta = 16' 55'' 17.5'' (RT)$	$\Delta = 6' 45'' 42.6'' (LT)$
$D = 1' 38'' 13.3''$	$D = 0' 29'' 53.6''$
$L = 1033.68'$	$L = 1357.19'$
$T = 520.63'$	$T = 679.38'$
$R = 3,500.00'$	$R = 11,500.00'$
$V = 50 \text{ mph}$	$V = 50 \text{ mph}$
$SE = 0.04$	$SE = NC$



6,640	-Y18- SR 1966		
8,500	AIRPORT RD.		
16,340	5,230	890	-L- NC 268
21,700	6,800	1,100	
	1,500	390	10,890
	2,500	600	14,100
2015 ADT	2,410	-Y18- SR 2333	
2035 ADT	3,700		

★ UPGRADE EXISTING SIGNAL

DRIVEWAY RADII ARE 10' UNLESS NOTED OTHERWISE

SEE SHEET 27 FOR -L- PROFILE  
SEE SHEET 34 FOR -Y18- PROFILE  
SEE SHEET 28-B FOR -Y18- INTERSECTION DETAIL

7/31/2015 pr-oj\p2603\_Rdy-phsh16.dgn