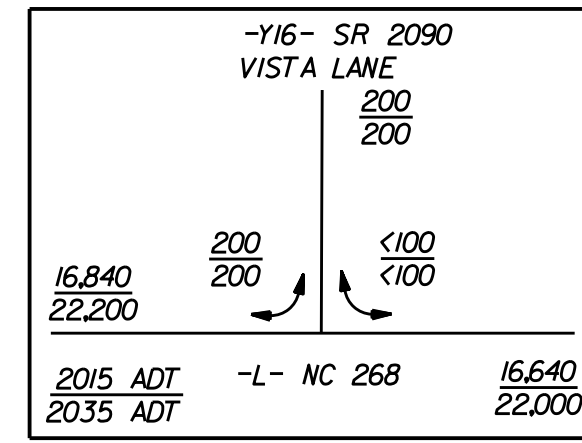
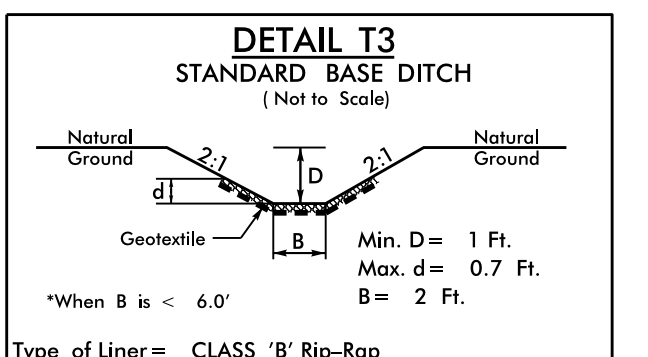
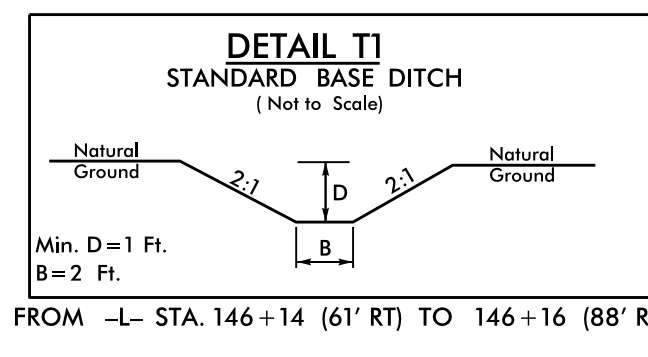
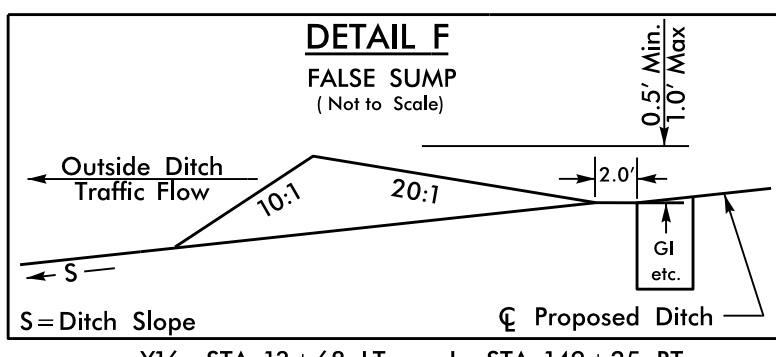
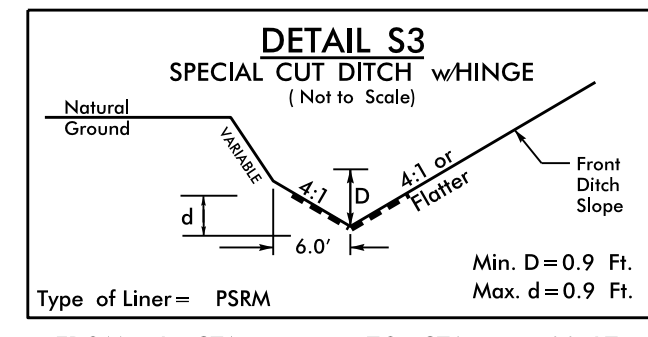
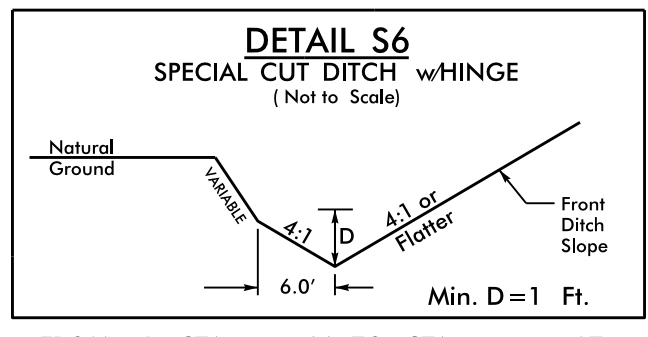
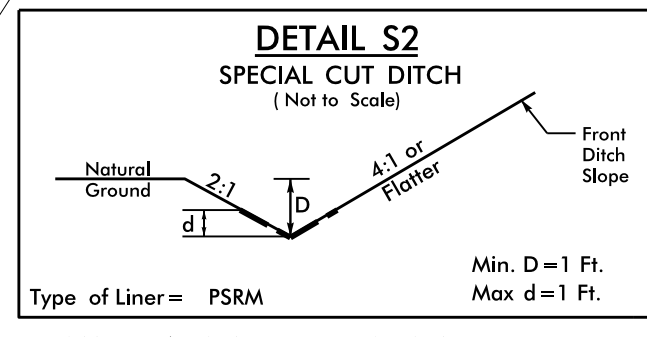
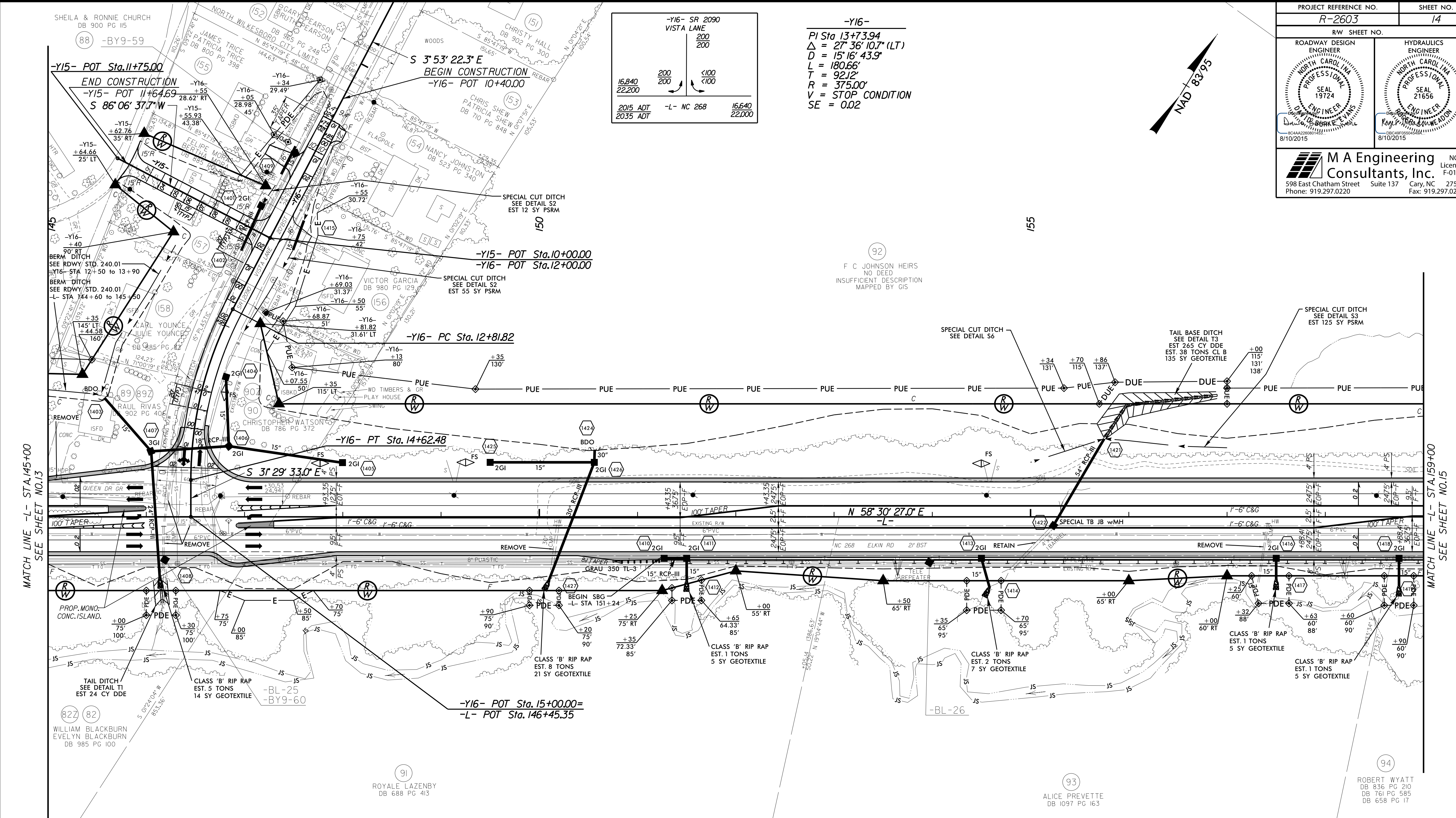
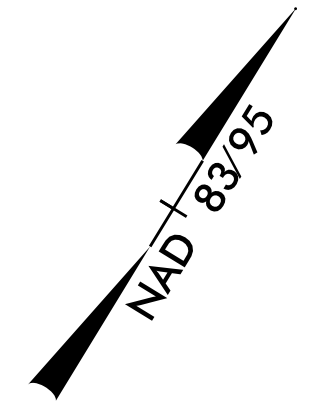


PROJECT REFERENCE NO. <b>R-2603</b>	SHEET NO. <b>14</b>
RW SHEET NO.	
ROADWAY DESIGN ENGINEER <b>NORTH CAROLINA PROFESSIONAL ENGINEER</b> SEAL 19724 8/10/2015	HYDRAULICS ENGINEER <b>NORTH CAROLINA PROFESSIONAL ENGINEER</b> SEAL 21656 8/10/2015
<b>MA Engineering Consultants, Inc.</b> 598 East Chatham Street Suite 137 Cary, NC 27511 Phone: 919.297.0220 Fax: 919.297.0221	



**-Y16-**  
 PI Sta 13+73.94  
 $\Delta = 27' 36" 10.7" (LT)$   
 $D = 15' 16" 43.9"$   
 $L = 180.66'$   
 $T = 92.12'$   
 $R = 375.00'$   
 $V = STOP CONDITION$   
 $SE = 0.02$



DRIVEWAY RADII ARE 10' UNLESS NOTED OTHERWISE  
 SEE SHEET 26 FOR -L- PROFILE  
 SEE SHEET 32 FOR -Y15- PROFILE  
 SEE SHEET 33 FOR -Y16- PROFILE  
 SEE SHEET 2B-4 FOR -Y16DET- PLAN & PROFILE  
 SEE SHEET 2B-8 FOR -Y16- INTERSECTION DETAIL

REVISIONS

7/31/2015  
10:45:20 AM  
pr-o\p2603\_Rdy-ph14.dgn